



Klamath Basin Salmon Restoration Program

Applicant Webinar

January 17, 2024

Presenters

Femke Freiberg

*Program Director, Western Water
National Fish and Wildlife Foundation
Western Regional Office
(415) 243-3104
Femke.Freiberg@nfwf.org*

Erica Engstrom

*Manager, Western Water
National Fish and Wildlife Foundation
Western Regional Office
(415) 490-5211
Erica.Engstrom@nfwf.org*

Tori Sullens

*Coordinator, Western Water
National Fish and Wildlife Foundation
Washington, DC Headquarters
(202) 888-1656
Tori.Sullens@nfwf.org*



NFWF



Agenda

- Program Overview
- Geographic & Species Priorities
- Priority Activities
- Metrics
- Eligibility
- Environmental Compliance
- Monitoring and Reporting
- How to Apply in Easygrants

Program Overview

Bureau of Reclamation

- 1) Klamath River Coho Program
- 2) Trinity River Restoration Program

USDA Natural Resources Conservation Service (NRCS)

- 3) Shasta Valley Regional Conservation Partnership Program
- 4) Drought Resilience Technical Assistance



Program Overview

Klamath River Coho Program:

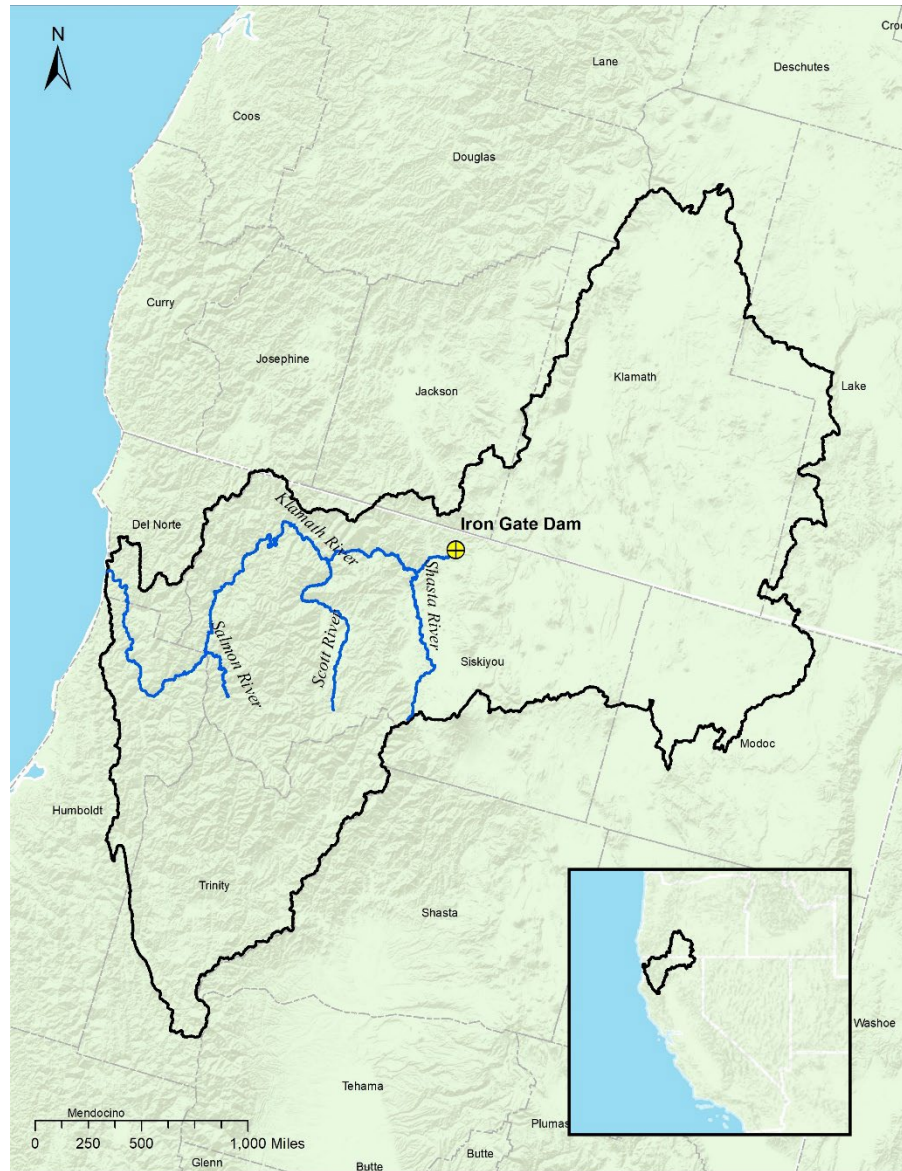
- Funded by Bureau of Reclamation (Klamath Basin Area Office)
- On-the-ground activities that improve degraded habitat and assist in enhancing natural populations of Southern Oregon Northern California Coast (SONCC) coho salmon.
- Mainstem Klamath River and tributaries between Iron Gate Dam (IGD) to the Klamath River mouth excluding the Trinity River.
- Required by NMFS 2019 BiOp.
- Up to \$500,000 available in 2024.

Grant size range: \$10,000 - \$250,000
Match encouraged



NFWF

Geographic Focus: Klamath River Coho Program



Projects must be located in the mainstem Klamath River Basin and tributaries between Iron Gate Dam (IGD) at RM 190 and the Klamath River mouth. With the exclusion of the Trinity River, all tributaries between IGD and the Klamath River mouth are eligible for funding through the Klamath Program.

Figure 1. Klamath River Coho Habitat Restoration Program focal geography (2019 Biological Opinion (BiOp), page 71, Figure 5)



Program Overview

Trinity River Restoration Program:

- Funded by Bureau of Reclamation (Northern California Area Office)
- Actions that reduce fine sediment delivery in degraded watersheds or improve habitat connectivity.
- Tributary watersheds of the Trinity River between Lewiston Dam and Weitchpec, including the South Fork Trinity River and its tributaries.
- Required by DOI 2000 Record of Decision.
- Up to \$1 million available in 2024.

Grant size range: \$10,000 - \$500,000
Match encouraged



NFWF

Geographic Focus: Trinity River Program



Projects must be located in tributary watersheds of the Trinity River between Lewiston Dam and Weitchpec, including the South Fork Trinity River and its tributaries.

Figure 2. Trinity River Restoration Program focal geography.



Program Overview

Shasta Valley Regional Conservation Partnership Program:

- Funded by U.S. Department of Agriculture, Natural Resources Conservation Service (NRCS)
- Activities that advance recovery of SONCC coho salmon by improving upstream water management, conveyance efficiency, and on-farm water management.
- Shasta River watershed, specifically the Shasta River above county road A12 to Dwinnell Dam, including Big Springs Creek and Parks Creek.
- Supported by a Regional Conservation Partnership Program Alternative Funding Agreement.
- Up to \$2 million available in 2024.

Grant size range: \$200,000 - \$2,000,000
1:1 Match required



Geographic Focus: Shasta Valley Program



Projects must be located within the Shasta River watershed, specifically the Shasta River above county road A12 to Dwinnell Dam, including Big Springs Creek and Parks Creek.

Figure 3. Shasta Valley Program focal geography.



Funding Overview

Drought Resilience Technical Assistance:

- Funded by U.S. Department of Agriculture, Natural Resources Conservation Service (NRCS).
- For Technical Assistance (TA) activities that will enable landowners to access other NRCS funding programs for Financial Assistance.
- Support projects that advance recovery of SONCC coho salmon by improving upstream water management, conveyance efficiency, and on-farm water management to enhance stream flows, improve water quality, and address inadequate habitat for fish, wildlife, and invertebrates.
- Projects must be located within the Klamath River Basin below Iron Gate Dam.
- Up to \$500,000 available in 2024.

Grant size range: \$10,000 - \$200,000
1:1 Match required



Program Overview

Current Non-Federal Match Opportunity

California Department of Fish and Wildlife, “Drought Resilience – Protecting Salmon”

- Up to \$10 million available for projects within the Shasta River and its tributaries
- Tribal governments, nonprofit organizations, and public agencies are eligible
- Projects must show support from Native American tribal governments and local landowners or landowner associations when applying
- Rolling application/review process
- For more information about how to apply, visit <https://wildlife.ca.gov/Conservation/Watersheds/Restoration-Grants/Concept-Application>
- Email: watershedgrants@wildlife.ca.gov



NFWF

Program Priorities – Reclamation Funding



BOTH Klamath Coho & Trinity River

- Access improvement and barrier removal projects
- Projects that improve habitat and access to coldwater refugia
- Instream habitat enhancement and protection projects
- Water transactions and conservation projects

Trinity River ONLY

- Fine sediment reduction projects, including road maintenance, road rehabilitation and road decommissioning on private and public lands within the Trinity River basin, excluding the Middle Trinity River HA (from Lewiston Dam to just above the North Fork).

Program Priorities – NRCS Funding

Shasta Valley & Drought Resilience TA

- Upstream water conservation and water quality improvement projects
- Conveyance efficiency projects with instream dedication
- On-farm water conservation and monitoring projects
- TA activities that support the kinds of projects listed above

Projects must comply with NRCS conservation practice and activity standards, and with all technical and administrative requirements, including planning, environmental, design, and financial accountability requirements.

NRCS Funding Guidelines

- Indirect costs are not allowable.
- Permitting costs other than NEPA and NHPA compliance are not allowable.
- Technical Assistance – Enhancement (TA-E) costs should be kept to a minimum (Shasta Valley Program only).
- Please review NRCS's [California Technical Services Guide](#) to determine which Conservation Practice Standards apply to your project.

NRCS California Field Office Technical Guide

Field Office Technical Guide | CA

California

Change state

Document Tree | Document Search

Keyboard Navigation Instructions

- Section 1 - General Resource References
- Section 2 - Natural and Cultural Resources Information
- Section 3 - Resource Concerns and Planning Criteria
- Section 4 - Practice Standards and Supporting Documents

Index

- Conservation Practice Standards & Support Documents
- Access Control (472)
- Access Road (560)
- Agrichemical Handling Facility (309)
- Air Filtration and Scrubbing (371)

Conservation Practice Standards & Support Documents

★ Featured by Content Manager

This folder does not contain any documents.



Metrics

Project Activity	Recommended Metric	Additional Guidance
Water acquisitions or leases	Acre feet of water purchased	Enter the acre feet of water purchased.
Water acquisitions or leases	CFS of cold water purchased	Enter the cubic feet per second of cold water purchased.
Fish passage improvements	# Passage barriers assessed and/or with design plans	Enter the number of in-stream barriers with assessments or engineering/design plans completed in <u>this</u> grant. In the notes, provide the barrier's SARP ID (aquaticbarriers.org). If the barrier(s) is not in SARP, provide its lat/long or its name and source.
Fish passage improvements	# Passage barriers rectified	Enter the number of in-stream barriers removed/rectified in <u>this</u> grant. In the notes, provide the barrier's SARP ID (aquaticbarriers.org). If the barrier(s) is not in SARP, provide its lat/long or its name and source.
Fish passage improvements	Miles of stream opened	Enter the number of miles of stream made accessible to aquatic organism passage.
Floodplain restoration	Acres restored	Enter the number of floodplain acres restored, indicating % of vegetation on the pre-project site and the dominant vegetation being restored.
Removal of invasives	Acres restored	Enter the number of acres cleared of invasive species.
Instream restoration	# Structures installed	Enter the number of habitat structures installed, replaced, upgraded, or repaired for improvement of instream habitat.



NFWF

Metrics

Project Activity	Recommended Metric	Additional Guidance
Instream restoration	Miles restored	Indicate the miles of stream enhanced or restored.
Riparian restoration	Acres restored	Enter the number of riparian acres restored, specifying the landcover type prior to planting, the % vegetation on the pre-project site, the dominant vegetation being planted, the buffer width, and the acres. Do not include instream restoration.
Wetland restoration	Acres restored	Enter the number of acres of wetland habitat restored, specifying the landcover type prior to restoration and the % of vegetation on pre-project site.
BMP implementation for nutrient or sediment reduction	Lbs. of sediment prevented from entering system annually	Enter the amount of sediment prevented from entering the system annually and indicate the method of calculating reduction in the notes.
Improved irrigation	Acre feet of water conserved	Enter the number of acre feet of water expected to be conserved annually.
Outreach/Education/Technical Assistance	# People reached	Enter the number of people reached by outreach, training, or technical assistance activities.
Restoration planning/Design/Permitting	# E&D plans developed	Enter the number of Engineering and Design plans developed. Generally, there will be one plan per project to be constructed.



NFWF

Program Guidelines and Eligibility

- Eligible applicants include: local, state, federal, and tribal governments and agencies, districts (e.g., conservation districts, planning districts), non-profit 501(c) organizations, schools, and universities.
- No political advocacy, fundraising, lobbying, terrorism or litigation.
- Not to implement legal requirements (mitigation, permit conditions, etc.).
- Applicants are encouraged to rent equipment where possible and cost-effective or use matching funds to make those purchases.
- Cannot use funds for telecommunications equipment or services produced by Huawei Technologies Company or ZTE Corporation.



Environmental Compliance – Applicant Responsibilities

- Coordinate with NFWF to ensure all environmental compliance is complete and adheres to Reclamation and/or NRCS standards. Grants are subject to:
 - ✓ National Environmental Policy Act (NEPA),
 - ✓ Endangered Species Act (ESA),
 - ✓ National Historic Preservation Act (NHPA),
 - ✓ Clean Water Act (CWA) (NFWF strongly encourages applicants to conduct a permit pre-application meeting with the U.S. Army Corps of Engineers prior to submitting their proposal),
 - ✓ Additional federal, state or local requirements based on project parameters.
 - CDFW’s “Cutting the Green Tape” program (<https://wildlife.ca.gov/Cutting-Green-Tape>)
- Ensure project lead (or subcontractor/consultant) staff hours and resources are accounted for in schedule/budget:
 - ✓ Incorporate cost estimates from qualified compliance consultants if needed.
 - ✓ Incorporate time allowance (For EA, 6 months AFTER funding partner receives COMPLETE Project description).
 - ✓ Extensive coordination and collaboration with NFWF and funding partner.
- **Most environmental compliance labor and sub-contracting costs can be reimbursed by the grant award prior to notice to proceed.**



NFWF

Environmental Compliance – NFWF/Reclamation/NRCS Responsibilities

- Provide an environmental compliance questionnaire/template to assist applicants and their contractors with completing environmental compliance reporting.
- Provide example environmental compliance documents and provide regular communication and updates throughout compliance process.
- Provide support from a qualified Environmental Compliance Consultant and/or Agency Compliance Lead to assist grantees in compiling relevant documents for Reclamation/NRCS review.
- Review documentation to ensure compliance with applicable federal laws and regulations prior to issuing written notice to proceed.

Funding will only be released after federal environmental compliance is complete and grantee receives a written notice to proceed.



Monitoring and Reporting

For Klamath River Coho Program

- 2019 BiOp: *Section 2.B Reporting Requirements under the Terms and Conditions*
 - Grantee will be required to report to Reclamation should any coho salmon be captured, relocated, injured, or killed. **Please contact NFWF and Reclamation immediately if any of these events occur.**
 - All coho salmon mortalities encountered must be:
 - » retained, placed in an appropriately sized whirl-pak or zip-lock bag,
 - » labeled with the date and time of collection,
 - » fork length,
 - » location of capture, and
 - » frozen as soon as possible.
 - » *Frozen samples must be retained until specific instructions are provided by NMFS.*





Questions?

Western toad in McGarvey Creek

How to Apply in Easygrants

[Frequently Asked Questions](#)

Log In

[New User?](#)

Login ID / Email

Password

Remember Me [Forgot Password?](#)

Log In

For the optimal Easygrants experience, please:

- [Use a Supported Browser](#)
- [Enable Pop-ups](#)
- [Allow Cookies](#)
- [Only Use One Tab](#)
- [Get Adobe Reader](#)
- [Log Out and Close Browser for Security](#)

Register

First Name *

Middle Name

Last Name *

Login ID / Email *

Confirm Login ID / Email *

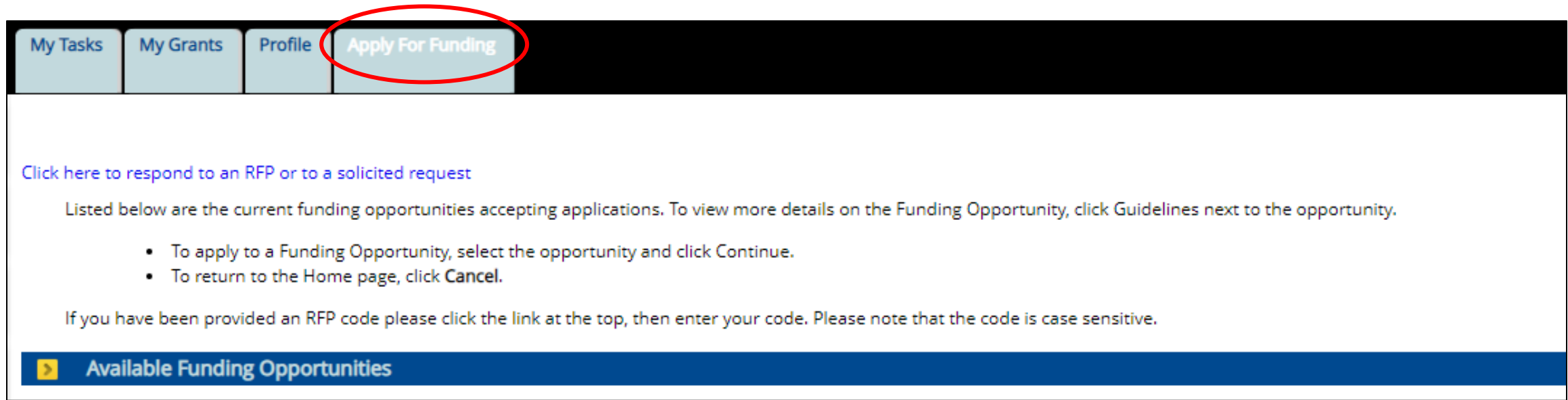
Password *

[Password Requirements](#)

Confirm Password *

Register **Back**

How to Apply in Easygrants



Once you are on your Easygrants homepage, click on “Apply for Funding”

Choose the **Klamath Basin Salmon Restoration 2024** Funding Opportunity

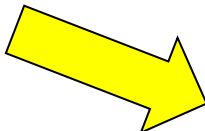


How to Apply for Funding

Apply for Funding View All My Tasks

My Tasks

Easygrants ID	Primary Contact/PI	Task	Program Name	Funding Cycle Name	Status	Outcome	Due Date	
82624	Sullens, Tori	Pre-Proposal	Grants	Klamath Basin Salmon Restoration 2024	Incomplete	Pre-proposal Not Submitted	2/20/2024	View PDF



- Main
- Contact Information
- Organization Information
- Project Information
- Uploads
- Matching Contributions
- Review and Submit
- FAQ
- Help

Due: 2/20/2024 11:59 PM ET

Sullens, Tori | Grants | Klamath Basin Restoration Program | Klamath Basin Salmon Restoration 2024

Instructions

Click the page links on the left navigation bar, or in the summary below to view the pages where you can provide information. Click **Home** to return to your Home page. You may save and return to edit your information to make changes. [Click here to view Foundation Guidelines for this Funding Opportunity.](#) Other useful links that will appear in the navigation bar at left include:

- **Home** brings you back to your Home page and out of this submission task.
- **FAQ** provides answers to common questions about the Foundation's proposal elements.
- **Help** provides guidance on both content and technical aspects related to completing many tasks.
- **Log Out** logs you out of the system.

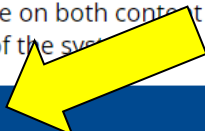
Validation Summary

Page Name

- Contact Information
- Organization Information
- Project Information
- Uploads
- Matching Contributions

Status

- ✓ Complete
- ✗ Incomplete
- ✗ Incomplete
- ✗ Incomplete
- ✓ Complete



Project Information

Title: Short, descriptive name indicating project purpose. (~100 characters)

Project start and end dates: Start within six months of the award date and end within two years of the start date.

Description: Two sentences about primary project activities, location, outcome/metrics and relevance to conservation. (~500 characters)

- Clearly state the main activity and the method being used
- Address a specific habitat, location or species benefitted

Abstract: More detailed description including location, major activities, outcome/metrics, and partners. (~1,500 characters)

- State what your organization will do
- Provide context and background information
- Explain how the project outcomes will specifically address a conservation issue



NFWF

Uploads

Upload Checklist

Upload Type	Required	Template	File Types Allowed	Max Uploads	Max File Size	Max Pages	Max Words	Max Characters
Klamath Basin Pre-Proposal Narrative 2024	Yes	Klamath Basin Pre-Proposal Narrative Template 2024	.doc, .docx, .pdf, .rtf	No Limit	16 MB	3	No Limit	No Limit
Klamath Environmental Comp Questionnaire 2024	Yes	Klamath Environmental Comp Questionnaire 2024	.doc, .docx, .pdf, .rtf	No Limit	16 MB	No Limit	No Limit	No Limit
Klamath BOR Budget Template 2024	Yes	Klamath BOR Budget Template 2024	.doc, .docx, .pdf, .rtf, .xls, .xlsx	No Limit	16 MB	No Limit	No Limit	No Limit
Klamath NRCS Budget Template 2024	Yes	Klamath NRCS Budget 2024	.doc, .docx, .pdf, .rtf, .xls, .xlsx	No Limit	16 MB	No Limit	No Limit	No Limit
Applicant Demographic Information Form	Yes	Applicant Demographic Information Form	.xls, .xlsx	No Limit	16 MB	No Limit	No Limit	No Limit

Uploads

Choose Upload Type



+ Add files...



Start upload



Cancel upload



NFWF



NFWF

Pre-proposal Project Narrative

Writing Instructions:

1. Please indicate the program to which you are applying (Klamath River Coho Restoration Grant Program, Trinity River Restoration Program, Shasta Valley Regional Conservation Partnership Program, or Drought Resilience Technical Assistance).
2. Please provide a two-page narrative that describes the strategy (set of activities) for achieving project outcomes, including the status of planning and implementation, and how that strategy is appropriate for addressing priority conservation needs in the specific project location. Furthermore, elaborate on the anticipated project outcome(s) and how progress will be monitored and measured, including baseline condition assessments. For applicants to the Shasta Valley Regional Conservation Partnership Program, please describe how you will monitor and measure instream benefit of conserved water.
3. *For Shasta Valley Regional Conservation Partnership Program and Drought Resilience Technical Assistance applicants (NRCS-funded programs)* – please list the NRCS Conservation Practice Standards that are applicable to or will be supported by your project. A complete list of practice standards is available here: [California | Field Office Technical Guide | NRCS - USDA](#) under “Section 4 - Practice Standards and Supporting Documents”.



NFWF

Pre-Proposal Narrative Question #1

Please indicate the program to which you are applying (Klamath River Coho Restoration Grant Program, Trinity River Restoration Program, Shasta Valley Regional Conservation Partnership Program, or Drought Resilience TA).



Figure 1. Klamath River Coho Habitat Restoration Program focal geography (2019 Biological Opinion (BiOp), page 71, Figure 5)



Figure 2. Trinity River Restoration Program focal geography.



Figure 3. Shasta Valley Regional Conservation Partnership Program focal geography.

Pre-Proposal Narrative Question #2

- **Activities:** Elaborate on the strategy and primary activities that will be employed through the grant and they will achieve the project outcome(s). Describe how these activities relate to established plans (management, conservation, recovery, etc.) and how the project strategy addresses priority conservation needs in the specific project location.
- **Outcome(s):** Elaborate on the outcome(s) identified previously; discuss what makes the outcome(s) achievable and important.
- **Tracking Metrics:** Indicate how the project will monitor/assess progress on the metrics listed in the RFP, including baseline assessments. Please note any challenges or limitations anticipated with tracking the metrics. **Applicants to the Shasta Valley Program should describe how the project will monitor and measure instream benefit of conserved water.**
- **Project Team:** List key individuals and describe their qualifications relevant for project implementation (include contractor information if known).
- **Other (Optional):** Provide any further information important for review of the proposal.

Most Competitive Narrative Elements:

- Program Goals and Priorities
- Technical Merit
- Partnership
- Transferability
- Communication
- Funding Need
- Conservation Plan and Context
- Monitoring
- Long-term Sustainability
- Past Success
- Key Personnel



NFWF

Pre-Proposal Narrative Question #2 (continued)

For applicants to the Shasta Valley Program ONLY

This funding is intended for projects that could improve conveyance/irrigation efficiency, water management, and water quality. Your proposal should provide, *or propose to gather*, enough baseline information that the review committee may assess the degree to which the project will benefit instream flows and fish habitat. Example assessments that could be used to provide these data include:

- Provide a **multi-year record of continuous flow data at diversion points** to establish baseline usage and specify the proposed diversion savings due to project implementation (cf/s and acre ft/year)
- **Static ditch loss testing**, defining how much water is likely lost to deep percolation or returns to river as baseflow
- **Analysis of water rights**, including points of diversion, place of use, and volume of water demand
- **A productive ground and consumptive use analysis** (defining E/T) to determine how water is being effectively used
- **Water temperature modeling** to show comparative benefits due to project improvements.

Reach out to NFWF to discuss additional conservation assessment strategies and potential project ideas.

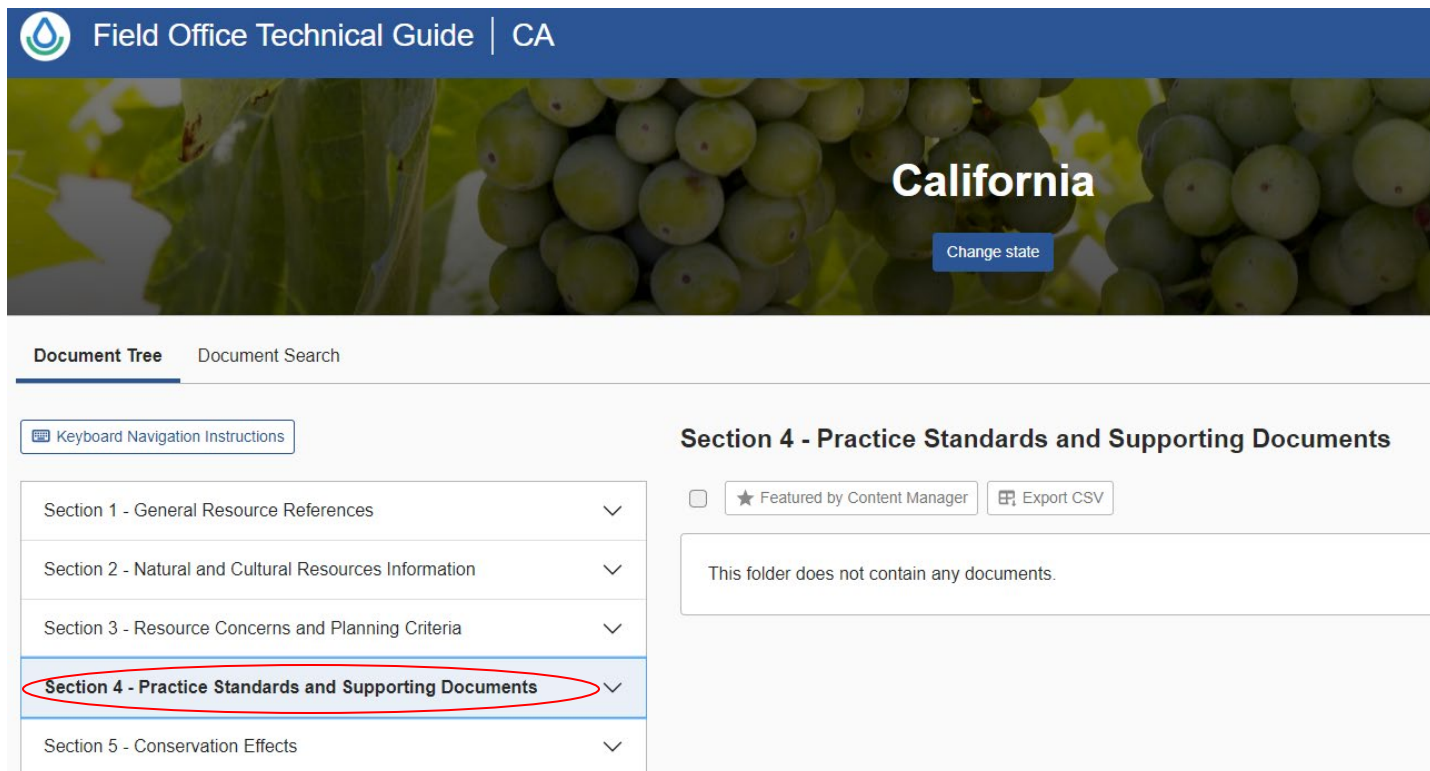
Additional guidance is available from the National Marine Fisheries Service.



Pre-Proposal Narrative Question #3

For applicants to the Shasta Valley Program and Drought Resilience TA ONLY

- List the NRCS Conservation Practice Standards that are applicable to your project. A complete list of practice standards is available here: [California | Field Office Technical Guide | NRCS - USDA](#) under “Section 4 - Practice Standards and Supporting Documents”.



The screenshot shows the 'Field Office Technical Guide | CA' website. The header features a blue bar with a water drop icon and the text 'Field Office Technical Guide | CA'. Below the header is a large image of green grapes with the word 'California' in white text and a 'Change state' button. The main content area has a 'Document Tree' and 'Document Search' section. The 'Document Tree' is a list of sections with dropdown arrows, where 'Section 4 - Practice Standards and Supporting Documents' is highlighted with a red oval. To the right of the document tree, there is a section titled 'Section 4 - Practice Standards and Supporting Documents' with a 'Featured by Content Manager' checkbox and an 'Export CSV' button. Below this, a message states 'This folder does not contain any documents.'



Pre-Proposal Narrative Question #3 (continued)

Field Office Technical Guide | CA

California

Change state

Document Tree Document Search

Keyboard Navigation Instructions

Conservation Practice Standards & Support Documents

★ Featured by Content Manager

This folder does not contain any documents.

- Section 1 - General Resource References
- Section 2 - Natural and Cultural Resources Information
- Section 3 - Resource Concerns and Planning Criteria
- Section 4 - Practice Standards and Supporting Documents
- Index
- Conservation Practice Standards & Support Documents**
- Engineering Specifications
- Section 5 - Conservation Effects

Field Office Technical Guide | CA

California

Change state

Document Tree Document Search

Keyboard Navigation Instructions

Conservation Practice Standards & Support Documents

★ Featured by Content Manager

This folder does not contain any documents.

- Section 1 - General Resource References
- Section 2 - Natural and Cultural Resources Information
- Section 3 - Resource Concerns and Planning Criteria
- Section 4 - Practice Standards and Supporting Documents
- Index
- Conservation Practice Standards & Support Documents**
- Access Control (472)
- Access Road (560)
- Agrichemical Handling Facility (309)
- Air Filtration and Scrubbing (371)

→ List of Conservation Practice Standards, linking to detailed information about specifications and requirements.



Uploads – Applicant Demographic Information Form

- The information you provide will not be shared with proposal reviewers and will not be considered when making grant decisions.
- The Foundation will not share identifying information about any particular entity or project.
- While the form is a required upload, applicants can opt out of providing the information within the form itself.
 - If your organization does not collect this information or if you have provided NFWF with this information in the last 12 months, you can opt out.
- The information provided on this Excel form will be kept confidential, the Foundation may share its anonymized aggregate findings as appropriate with its staff, Board of Directors, funding partners, and publicly on its website or through other media.

APPLICANT DEMOGRAPHIC INFORMATION

As part of NFWF's goal to encourage and support diversity across the conservation projects we fund, we would like to better understand the existing diversity in our grantmaking community and in the local communities. To accomplish this task, we are asking organizations that we fund to assist us by providing basic information about their workforce demographics on this form.

As part of this effort to support diversity, we also desire to understand how our grantees engage with the communities where the projects take place and who in those communities might benefit from them. We ask for this information provided on this excel form will be kept confidential, although the Foundation may share its aggregate findings as appropriate with its staff, Board of Directors, funding partners, and publicly on its website. Not share identifying information about any particular entity or project. These anonymized aggregate data will be used by NFWF to better understand the demographic profiles of the organizations that we fund.

The information you provide will not be shared with proposal reviewers and will not be considered when making grant decisions.

Instructions: Complete all pertinent fields shaded in green. Your Human Resources Department may have some of the information requested readily available. Please be sure to complete the General Information section if you do not know an answer, use the "don't know/not sure" option instead of guessing. If a section does not apply to your organization you may skip it. **Do not make any other changes to this form.** You may opt out of providing this information to NFWF; however, you still **must upload this form to Easygrants** with your application and complete the first section of the form.

All applicants must complete this section, even if you have provided this data to NFWF in the past 12 months or are opting out for another reason.

If you have provided this data to NFWF in the past 12 months you do not need to provide it again but you must still complete this top section of the form and submit it with your proposal.

Easygrants project # from your grant application:

Grant program name shown on the RFP:

If you are opting out, select a reason from the dropdown list in the green box:

General Information

Date Completed:

Project Title:

Organization Full Name:

Organization EIR:

Organization Type:

Organization Size (number of employees):

Click on the green box to select from the dropdown list

Click on the green box to select from the dropdown list

PART 1: APPLICANT ORGANIZATION - ALL EMPLOYEES (if applicable)

Please provide the following demographic information about all of your organization's employees, including senior leaders.

1. How many people currently work for your organization? (Include temporary and part-time employees in your response but do not include contractors)

Total Number:

2. How many of your employees identify as each gender?

Female:

Male:

Non-binary:

Unknown/Not sure:



NFWF

Uploads – Environmental Compliance Questionnaire



Klamath Basin Salmon Restoration 2024 Environmental Compliance Questionnaire

Projects that are selected for funding will need to comply with NEPA, NHPA, CWA, and ESA, as well as any other applicable federal, state, or local laws and regulations prior to project commencement. Briefly answer the following list of questions to provide initial insight into the extent and scope of potential environmental compliance and permitting requirements for your project:

- (1) Are you aware of any ESA listed (i.e., endangered or threatened) species in the project area as well as critical habitats they depend on? If so, are there any expected impacts to these species or their critical habitat (explain). Are there any expected impacts to non-ESA-listed species or their habitat? Are there any existing biological/habitat studies or reports covering the project area?
- (2) Are there any wetlands inside or near the project boundaries and/or are there any existing wetland studies covering the project area? If so, please explain how many acres of wetlands there are, and describe any impact your project will have on the wetlands. Please estimate the quantity of any dredge and fill activities.
- (3) Describe the extent of in-water work proposed for your project. Will there be removal/fill activities? Will the project alter the streambed? Will the project impact quality and/or quantity of water resources? If so, please explain.
- (4) Describe the extent of ground disturbing activities associated with your project. Will there be trenching? If so, what are the dimensions of the trenching and/or other ground disturbance activity? Are there any existing cultural and/or historic resources studies or surveys covering the project area?
- (5) Are you aware of any known contaminated media (soil, water) in the project area?
- (6) List all landowner categories for your project area (federal, state, other public land, tribal, private, etc.).
- (7) List any other existing, available environmental, cultural, biological, or botanical reports, studies, surveys, and/or other NEPA documentation, which has been completed for the project area or near the project area within the last 5 years.
- (8) Describe the proposed seasonal timing of the project implementation (if applicable). Identify whether nighttime work is required.

Please note that if selected, additional project information may be requested by NFWF, Bureau of Reclamation, and Natural Resources Conservation Service to ensure thorough environmental compliance is completed.



Matching Contributions

Matching Contribution Editor

Instructions

Enter the required matching contribution details below. Click **Save** regularly to save your work. **The system will timeout and you will lose unsaved work if you do not save at least once every hour.** Click **Save and Close** to save and return to the Matching Contributions list page. Fields marked with a red asterisk (*) are required for final submission for most programs. Click **Help** for examples and instructions.

Status *

Source *
Enter the name of the person or Organization providing the Matching Contribution

Source Type *

Type *

Description *
Limit: 250 characters Remaining: 250

Amount *

Save and Close **Close**



Review and Submit

Uploads

Matching Contributions

Review and Submit

FAQ

Help

Log Out

View Full Submission

View PDF

Submission

Validation Status

Page Name **Status**

Contact Information	✓ Complete
Organization Information	✗ Incomplete
✗ Primary Organization is required	
Project Information	✗ Incomplete
✗ Project Title is required.	
✗ Project Start Date is required.	
✗ Project End Date is required.	
✗ Description is required	
✗ Abstract is required.	
✗ Project Location Description is required	
✗ Requested Amount is required.	
Uploads	✗ Incomplete
✗ Applicant Demographic Information Form is required and has not been uploaded.	
Klamath BOR Budget Template 2024 is required and has not been uploaded.	
Klamath Environmental Comp Questionnaire 2024 is required and has not been uploaded.	
Klamath Basin Pre-Proposal Narrative 2024 is required and has not been uploaded.	
Klamath NRCS Budget Template 2024 is required and has not been uploaded.	
Matching Contributions	✓ Complete

NOTE: You must enable pop-ups to use this system. If a link does not open please try holding the Shift or Control (CTRL) key on information.

Timeline

Pre-Proposal Due Date	February 20, 2024 by 8:59 PM PST
Invitation to Submit Full Proposal	Mid March 2024
Full Proposal Due Date	April 23, 2024 by 8:59 PM PST
Review Period	May 2024
Awards Announced	August 2024



Contact Information

Femke Freiberg

*Program Director, Western Water
National Fish and Wildlife Foundation
Western Regional Office
(415) 243-3104
Femke.Freiberg@nfwf.org*

Erica Engstrom

*Manager, Western Water
National Fish and Wildlife Foundation
Western Regional Office
(415) 490-5211
Erica.Engstrom@nfwf.org*

