

# SUSTAIN OUR GREAT LAKES

## 2020 Funding Opportunity Guidance for Applicants



CROWN FAMILY PHILANTHROPIES



# Webinar Agenda

- Sustain Our Great Lakes overview
- Funding opportunity details
  - *New Wisconsin's Lake Michigan initiative*
- Application guidance
- Q&A session

## *Housekeeping:*

- *Q&A breaks*
- *Webinar recording/slides and FAQ document at:*  
[www.nfwf.org/greatlakes](http://www.nfwf.org/greatlakes)



# Public–Private Partnership

- ArcelorMittal
- US Environmental Protection Agency
- US Fish & Wildlife Service
- US Forest Service
- National Fish & Wildlife Foundation
- National Oceanic & Atmospheric Administration
- USDA Natural Resources Conservation Service
- Caerus Foundation
- Crown Family Philanthropies
- Milwaukee Metropolitan Sewerage District
- Walder Foundation



# Program Achievements: 2006–2019

## \$174.5 million

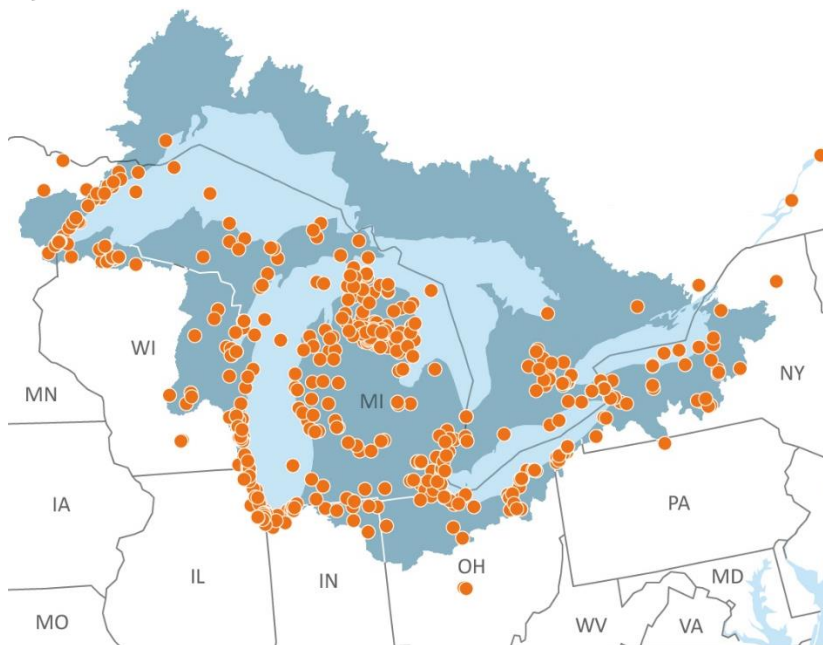
dedicated by SOGL and grantee organizations  
toward ecological restoration

### \$81 million

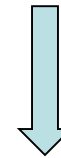
awarded in grants  
by SOGL since 2006

### \$93.5 million

committed by grantees  
as match since 2006



## Outcomes



### 2,145

Miles of fish  
passage  
restoration



### 42,878

Acres of wetland  
restoration



### 281

Miles of stream and  
riparian habitat  
restoration



### 228M

Gallons of  
stormwater storage  
capacity added



# 2020 Funding Opportunity

- Request For Proposals at: [www.nfwf.org/greatlakes](http://www.nfwf.org/greatlakes)
- Pre-proposal due date: February 11
- Full proposal due date: April 16
- Eligible applicants
  - ✓ Non-profit organizations
  - ✓ State, tribal & local governments
  - ✓ Educational institutions
- Anticipated funding: up to \$6.9M
  - Additional \$1.36M to projects in WI Lake Michigan watershed
- Grant size:
  - \$100,000–\$1M (categories 1–4)
  - \$50,000–\$300,000 (category 5)



Short-billed dowitcher



Northern pike

# Program Priorities

- 1: Restore and Enhance Stream and Riparian Habitat
- 2: Restore and Enhance Coastal Wetland Habitat
- 3: Expand Green Stormwater Infrastructure in Great Lakes Communities
- 4: Maintain and Enhance Benefits of Habitat Restoration through Invasive Species Control
- 5: *Restore and Preserve Natural Areas and biodiversity in Wisconsin's Lake Michigan Watershed*



# Funding Availability by Geographic

- \$6.9 million available for projects that occur within Great Lakes basin (current or historic)
- \$100–200K may be directed to projects in Canada
  - ✓ Western Lake Ontario, near Hamilton
- Additional \$1.36 million will be available for projects in Wisconsin's Lake Michigan Watershed
  - ✓ Geographically eligible projects not funded through categories 1-4 will automatically be considered under category 5





# Funding Category 1: Restore and Enhance Stream & Riparian Habitat

- Improve the quality and connectivity of stream and riparian habitat
- Priority to projects that:
  - ✓ Benefit species of conservation concern, brook trout and lake sturgeon
  - ✓ Reduce sediment and nutrient loading to streams and other waters
- [Fishwerks](#) tool – webinar [recording](#) on website (see RFP for adtl info)
- Sea Lamprey Control Program consultation ([kevin\\_mann@fws.gov](mailto:kevin_mann@fws.gov))
  - Additional guidance available at [www.nfwf.org/greatlakes](http://www.nfwf.org/greatlakes)



Lake sturgeon. Photo: River Alliance of Wisconsin



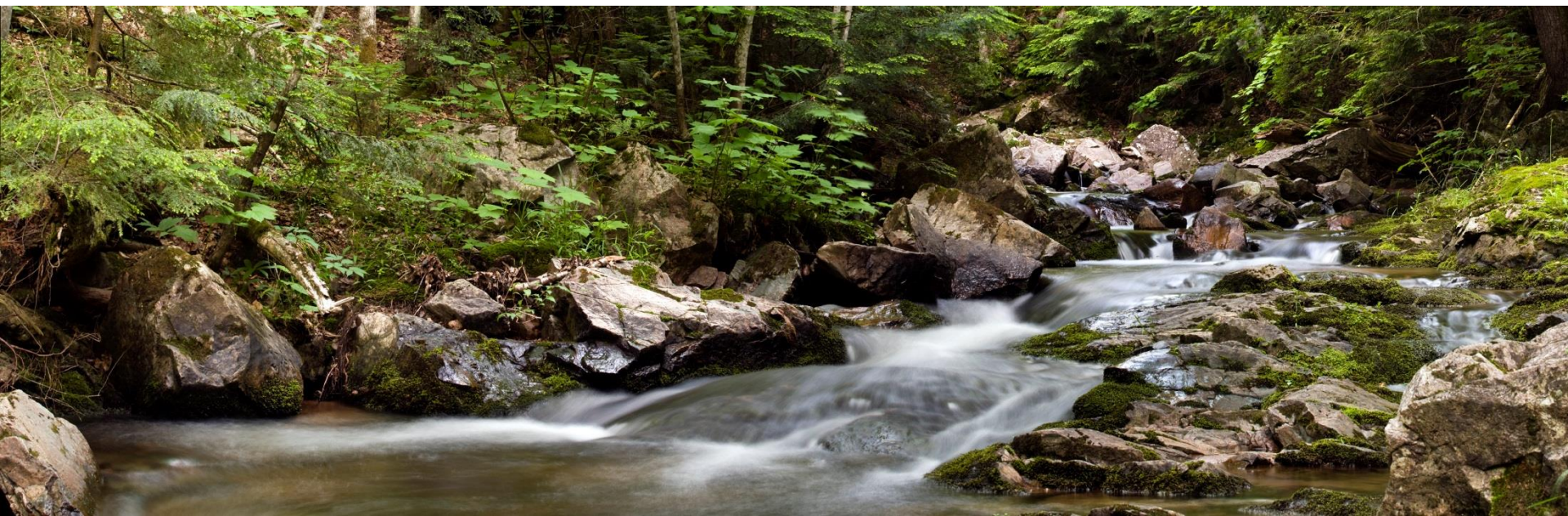
Brook trout



# Stream & Riparian Habitat

## Primary Strategies

- Restore aquatic connectivity
  - ✓ Barrier removal
  - ✓ Bridge and culvert replacement
  - ✓ Passage structures
- Naturalize stream channels
  - ✓ Channel realignment
  - ✓ Excavation
- Improve in-stream habitat
  - ✓ Installation of instream structures
  - ✓ Sediment management
- Improve riparian habitat
  - ✓ Bank stabilization
  - ✓ **Invasive species control**
  - ✓ Native plant restoration



# Funding Category 2: Restore and Enhance Coastal Wetland Habitat

- Improve the quality and connectivity of wetlands where water levels are influenced by the Great Lakes and adjacent riparian and upland habitat
- Priority to projects:
  - ✓ On non-federal lands that restore wetlands monitored by the Great Lakes Coastal Wetland Monitoring Program
  - ✓ That benefit populations of shorebirds, breeding marsh birds, waterfowl, marsh-spawning fish such as northern pike
- Priority wetland map: [www.greatlakeswetlands.org/map](http://www.greatlakeswetlands.org/map)



Lesser yellowlegs



Northern pike



Black duck



# Coastal Wetland Habitat

## Primary Strategies

- Restore aquatic connectivity
  - ✓ Passage structures
  - ✓ Removal of hard structures
  - ✓ Sediment removal
- Improve hydrology
  - ✓ Water control techniques
  - ✓ Sediment management
- Improve habitat structure
  - ✓ **Invasive species control**
  - ✓ Native plant restoration





## Funding Category 3: Expand Green Stormwater Infrastructure in Great Lakes Communities

- Improve green stormwater infrastructure in Great Lakes shoreline cities to increase storm water storage and capture
- Priority to projects:
  - ✓ Add more than 100,000 gallons of stormwater storage capacity (*include calculation for volume of runoff captured and infiltrated annually*)
  - ✓ Demonstrate water quality benefits to the Great Lakes or connecting channels
  - ✓ Utilizing native plant and tree species that improve pollinator habitat and urban canopy
- Calculate gallons of stormwater storage added:

[EPA Stormwater Calculator](#)

[i-Tree](#)

# Green Stormwater Infrastructure

## Primary Strategies

- Install green infrastructure
  - ✓ Rain gardens
  - ✓ Bioswales
  - ✓ Green roofs
  - ✓ Pervious surfaces
- Create and enhance urban wetlands
  - ✓ Construct/improve wetlands
  - ✓ Improve wetland habitat
- Restore urban forests
  - ✓ Strategic native tree installation



# Maintain and Enhance Benefits of Habitat Restoration through Invasive Species Control

- Support invasive species control efforts needed to sustain or enhance the benefits of previous habitat restorations
- Priority to projects:
  - ✓ Directly protects, reinforces, or enhances value of restoration projects previously funded by GLRI or SOGL
  - ✓ Of sufficient size, scope, or unique ecological value
- Non-competitive projects:
  - ✓ New or untested technologies
  - ✓ Exclusive focus on early detection and rapid response (EDRR)
  - ✓ Control invasive fish or other animals
  - ✓ On-off efforts to treat new acres, not connected to previously funded restoration



# Controlling Invasive Species

## Primary Strategies

- Re-Treat or Manage Acres to Control Invasive Species
  - ✓ Acres that have received initial treatment to further control primary invasive species target(s) and management of secondary invasives appearing post-initial treatment
- Expand Existing Invasive Control Efforts
  - ✓ Treat or manage invasive species on new/previously untreated acres adjacent or strategically connected to existing control efforts



# ***New Funding Category 5: Restore and Preserve Natural Areas and Biodiversity in Wisconsin's Lake Michigan Watershed***

- Additional \$1.36 million will be available for projects proposed in Wisconsin's Lake Michigan watershed
- Grant size: \$50-300k
- Grant duration: 2 to 4 years if project includes significant pre and post implementation activities
- Match not required
- Fund for Lake Michigan provide up to \$400k in matching funds
- Projects must include on-the ground implementation – 50% of budget
- Additional eligible activities:
  - Enhancing public greenspace
  - Improving public access to natural areas
  - Project design and engineering
  - Pre and post implementation monitoring
  - Applied research
  - Maintenance and vegetation establishment
  - Education and Outreach

# Wisconsin's Lake Michigan Watershed

## Primary Strategies

- Restore and preserve of a wide variety of habitats and natural landscapes
  - ✓ prairies
  - ✓ grasslands
  - ✓ oak savannas
  - ✓ upland and lowland forests
  - ✓ wetlands and ephemeral ponds
  - ✓ beaches and dune systems
  - ✓ nearshore and shoreline
- Improve range of ecological benefits
  - ✓ Increase complexity, connectivity and quality of habitat of natural areas
  - ✓ Improve habitat and community resilience
  - ✓ Enhance biodiversity and protect habitat critical for species





# Metrics and Monitoring

- Applicants may use grant funding to support monitoring
- Monitoring plan
  - ✓ Metrics
  - ✓ Baseline and post-implementation
  - ✓ Resources
- Metrics to track progress toward project completion
  - ✓ Miles/acres restored
  - ✓ Passage barriers rectified
  - ✓ Lbs P reduced annually
- Monitoring biological outcomes
  - ✓ Improvements to priority fish, breeding marsh birds, shorebirds and waterfowl, pollinators etc.
  - ✓ Contact NFWF for guidance



# Guidance for Metrics Reporting and Monitoring

- Additional instructions for metrics and monitoring
  - Fish passage improvements
  - Stream/channel restoration
  - Riparian restoration
  - Brook trout habitat improvements
  - Wetland reconnection
  - Wetland hydrology improvements
  - Wetland habitat improvements
  - Green stormwater infrastructure
  - Invasive species control
- Resources and tools

## Guidance for Applicants and Grantees: Metrics Reporting and Monitoring

### B.1.1 Purpose and Intended Uses

The purpose of this document is to provide guidance to Sustain Our Great Lakes (SOGL) applicants/grantees when reporting on project activities and metrics during full proposal development and subsequent metric tracking after grant award.

The specific project types this appendix addresses includes:

- [Section B.2](#): Fish passage improvements
- [Section B.3](#): Stream/channel restoration or naturalization
- [Section B.4](#): Riparian restoration
- [Section B.5](#): Brook trout habitat improvements
- [Section B.6](#): Wetland reconnection
- [Section B.7](#): Wetland hydrology improvements
- [Section B.8](#): Wetland habitat/vegetation improvements
- [Section B.9](#): Implementation of agricultural best management practices
- [Section B.10](#): Installation of green infrastructure for stormwater retention

Please note that in some cases, grantees may need to follow guidance for multiple project types depending on the scope of project activities proposed.

### B.1.2 General Guidance on Activity/Metrics Reporting

The National Fish and Wildlife Foundation (NFWF) requests that applicants/grantees report on proposed project activities using Easygrants or, when specified, by including information in the narrative of the full proposal and subsequent interim report narratives. NFWF uses this information to inform individual project funding recommendations, track grant/project progress throughout the life of a grant, and summarize outcomes across projects to assess program impact. To ensure reporting and tallying is done correctly, grantees should follow the guidance in this document to the extent feasible, including specifics about how to gather and report relevant data.

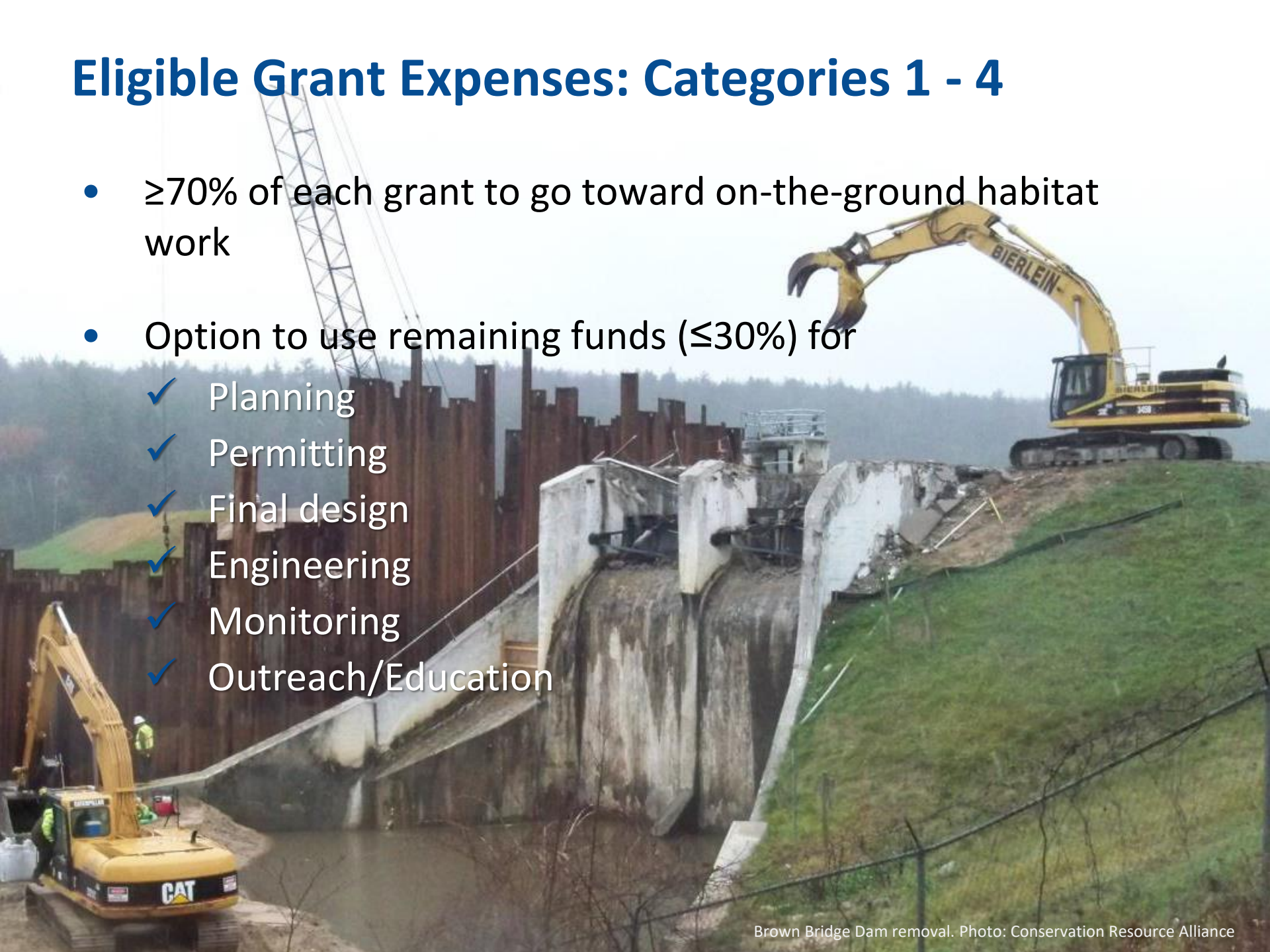
The potential for *double-counting project activities*, and guidance on how applicants/grantees can help NFWF avoid it, is an issue mentioned in multiple sections below. Double-counting is primarily a concern when grantees are reporting on the total number of acres or miles restored by a project. For example, consider a 10-acre project that removed invasive plants and planted native vegetation on all 10 acres. While the total restoration footprint (i.e., the total number of acres restored) would be 10, grantees may instead report 20 acres as the total number restored (i.e., 10 acres for invasive removal and 10 acres for planting) if not given specific guidance about how to handle multiple activities that occur on the same acres. To address this potential confusion, in most cases, one metric has been identified for reporting the total geographic footprint on which all restoration activities have occurred.

However, it is important to note that outside of metrics that are specifically focused on understanding the total footprint of a given project (e.g., total acres or stream miles restored), grantees can report on restoration activities separately, even if they occur on the same acres or stream miles. For example, for a barrier removal project, grantees can report the number of



# Eligible Grant Expenses: Categories 1 - 4

- $\geq 70\%$  of each grant to go toward on-the-ground habitat work
- Option to use remaining funds ( $\leq 30\%$ ) for
  - ✓ Planning
  - ✓ Permitting
  - ✓ Final design
  - ✓ Engineering
  - ✓ Monitoring
  - ✓ Outreach/Education





# Matching Contributions: Categories 1 - 4

- Projects with minimum 1:1 non-federal match ratio most competitive
  - ✓ Indicate federal match to demonstrate partner investment in project
- Match sources
  - ✓ Cash
  - ✓ In-kind contributions of staff
  - ✓ Materials and services donated
  - ✓ Volunteer time
  - ✓ Cost of land acquisition/easement
  - ✓ Allowable indirect costs not covered by grant funding
  - ✓ Other tangible contributions to project goals



# Match and Period of Performance

- Match must be spent between project start and end dates
- Backdating not an option





# Period of Performance

- Start date should be no earlier than August 17, 2020
- Duration typically 2 years (or two full field seasons)
  - Category 5: up to 4 years
- May include a third year as needed to complete:
  - ✓ Planning
  - ✓ Permitting
  - ✓ Final design
  - ✓ Engineering
  - ✓ Implementation
  - ✓ Baseline Monitoring
  - ✓ Post-Restoration Monitoring





Questions?





# Easygrants [easygrants.nfwf.org](https://easygrants.nfwf.org) – Registering

Login ID / Email

Password

☐ Remember Me?

[Forgot your password?](#)

Log In

**New User?** [Register here.](#)  
[Frequently Asked Questions](#)

- **New user?** Click on “Register Here.”
- **Lost your password?** Click on “forgot your password” - An email with password is sent from [easygrants@nfwf.org](mailto:easygrants@nfwf.org).
- **Locked out?** Contact helpdesk at [easygrants@nfwf.org](mailto:easygrants@nfwf.org) or 202-595-2497.

# Easygrants – Creating Username or Organization

## Add Person Contact

Prefix	<None> ▼
First Name *	<input type="text"/>
Middle Name	<input type="text"/>
Last Name *	<input type="text"/>
Suffix	<None> ▼
Email Address *	<input type="text"/>
Organization * *	<input type="button" value="Select Organization"/>

- Do not create duplicate accounts.
- Use your professional email address and full legal organization name.
- Unsure if you already have a user account or if organization is registered in Easygrants? Contact helpdesk at [easygrants@nfwf.org](mailto:easygrants@nfwf.org) or 202-595-2497.

## Add or Edit Grant Administration Organizations

Primary Organization	<input type="checkbox"/>
Role	<Select> ▼
Organization *	<input type="button" value="Select Organization"/>



Please visit review your contact details and make sure that you  
**provide a phone number**



# Pre-Proposal VS Full Proposal Requirements

## Pre-Proposal

- Personal Contact Information
- Organization Information
- Project Information:
  - Title
  - Description
  - Abstract
  - Period of Performance
- Matching Contributions
- Uploads: 2 page Narrative

## Full Proposal

- Personal Contact Information
- Organization Information
- Project Information:
  - Title
  - Description
  - Abstract
  - Period of Performance
- Matching Contributions
- Uploads: 7 page Narrative\*
- **Project Location and Map**
- **Metrics**
- **Budget**

# Full Proposal Task in Easygrants

Used for navigating through your application  
in EasyGrants

Home

Main

Contact Information

Organization Information

Project Information

Project Location

Map

Uploads

Metrics

Budget

Matching Contributions

Permits and Approvals

Review and Submit

FAQ

Help

Log Out

Project Information

Due: 7/14/2016 11:59 PM ET

Easygrants ID: 54375

Instructions

Click the page links on the left navigation bar, or in the summary below to view the pages where you will enter the information required for this submission. save and return to edit your information as many times as needed until you submit. Once you submit, you will no longer be able to make changes. Click here for more information.

Other useful links that will appear in the navigation bar at left include:

- Home brings you back to your Home page and out of this submission task.
- FAQ provides answers to common questions about the Foundation's proposal elements.
- Help provides guidance on both content and technical aspects related to completing many of the pages in the system.
- Log Out logs you out of the system.

Validation Summary

Page Name	Status
Contact Information	Complete
Organization Information	Incomplete
Project Information	Incomplete
Project Location	Incomplete
Map	Incomplete
Uploads	Incomplete
Metrics	Incomplete
Budget	Incomplete
Matching Contributions	Complete
Permits and Approvals	Complete

# Project Information

- **Title:** (~100 characters)
  - short, descriptive name indicating project purpose
- **Description:** (~500 characters)
  - Main activities and methods
  - Specific habitat, location or species benefitted
- **Abstract:** (~1,500 characters)
  - Location, activities, outcome/metrics, and partners
  - Context and background information
  - Explain how outcomes will address a conservation issue





# Budget

- Only the grant amount requested from NFWF
- Itemize all costs in appropriate budget categories.
- No lumping costs i.e., ‘All Salaries: \$10,000’
- ‘**Total Amount Requested**’ in Project Information section must equal the ‘**Budget Grand Total**’ in Budget section

▼ <u>Materials and Supplies</u>	\$0.00
Materials and Supplies + 📄	\$0.00
▼ <u>Contractual Services</u>	\$0.00
Subcontract/Contract - Per Agreement + 📄	\$0.00
Subgrant - Per Agreement + 📄	\$0.00
▼ <u>Other Direct Costs</u>	\$0.00
Other Direct Costs + 📄	\$0.00
▼ <u>Indirect Costs</u>	\$0.00
Indirect Costs + 📄	\$0.00
<u>Total Direct Costs</u>	\$0.00
<u>Total Indirect Costs</u>	\$0.00
<u>Total Costs</u>	\$0.00

NATIONAL FISH AND WILDLIFE FOUNDATION

Apply for a GrantBecome a PartnerConservation ProgramsMedia CenterDONATE

NFWF

Who We AreWhat We DoPartnershipsResults

HomeGrantsApplicant InformationBudget Instructions

FacebookTwitterYouTubeLinkedInPinterestInstagram

search

QUICK LAUNCH

Grants Home

Conservation Programs

Applicant Information

Applicant FAQ's

Required Financial Documents

Budget Instructions

Indirect Cost Policy

Indirect Cost Calculator

Transparency Act Requirements

Mapping Tool

Pre-Proposal Summary

Full Proposal Summary



Shortgrass prairie | Credit: Greg Knadle

CONTACT INFORMATION

If you have questions concerning your application, please contact the staff member listed in your RFP. You can also email info@nfwf.org.

DUE DATES

1/14/2020

RESTORE Colorado Program Applicant Webinar






1/15/2020

Hurricane Response Marine Debris Removal


<https://www.nfwf.org/whatwedo/grants/applicants/Pages/budget-instructions.aspx>

The logo for the National Fish and Wildlife Foundation (NFWF). It features a circular emblem on the left containing a stylized blue silhouette of a fish jumping out of water. To the right of the emblem, the words "NATIONAL FISH AND WILDLIFE FOUNDATION" are written in a circular path around the top, and "NFWF" is written in large, bold, grey capital letters.

## How-to input additional information in your Budget

▼ <u>Travel</u>			\$4,271.00
▼ Domestic Airfare - Per Flight			\$2,645.00
To Seattle from Boston Round Trip	 		\$1,750.00
To Anchorage from St. Petersburg Round trip	 		\$895.00



**Notes** 

Line Item  
Budget

Domestic Airfare - Per Flight

Travel for one biotech and one volunteer to Seattle from Boston for Killer Whale Conference.  
Travel for principal investigator to Anchorage from St. Petersburg for site visits.

Save

Save and Close

Cancel

# Easygrants – Uploads



## Upload Checklist

Upload Type	Required
Full Proposal Narrative	Yes
Project Map	No
Letters of Support	No
Photos - Jpeg	No
Statement of Litigation	Yes
Board of Trustees, Directors, or equivalent	Yes
GAAP audited financial statements	Yes
IRS Form 990	Yes
A-133 Audit	Yes
Indirect Rate Agreement	No

Review 'Upload Checklist' and upload relevant files into Easygrants.

Required:

- IRS-990
- A-133 Audit
- GAAP Audit
- Board of Trustees, Directors or Equivalent
- GAAP audited financial statements

Strongly encouraged:  
Project Map

*If you don't have a required document, just upload an explanation on your company letterhead in place of the required document.*





# Uploads – Financial and Other Documents

All financial documentation must:

- Represent the same fiscal year period
- Must be the most recent financial information available
- Must be *less than* two years old



The screenshot shows the National Fish and Wildlife Foundation (NFWF) website. The header includes the NFWF logo, navigation links (Who We Are, What We Do, Partnerships, Results), and a 'DONATE' button. The main content area is titled 'Required Financial Documents' and features a large image of a shortgrass prairie. The page includes a 'QUICK LAUNCH' sidebar with links to various resources, a 'CONTACT INFORMATION' section, and a 'DUE DATES' section listing upcoming deadlines.

NATIONAL FISH AND WILDLIFE FOUNDATION

Apply for a Grant Become a Partner Conservation Programs Media Center DONATE

NFWF

Who We Are What We Do Partnerships Results

Home » Grants » Applicant Information » Required Financial Documents

QUICK LAUNCH

- » Grants Home
- » Conservation Programs
- » Applicant Information
  - Applicant FAQ's
  - Required Financial Documents**
  - Budget Instructions
  - Indirect Cost Policy
  - Indirect Cost Calculator
  - Transparency Act Requirements
  - Mapping Tool
  - Pre-Proposal Summary
  - Full Proposal Summary
- » Recipient Information
- » Grants Library
- » Easygrants

Shortgrass prairie | Credit: Greg Knadle

## Required Financial Documents

The following financial documentation must be submitted with NFWF full proposals. Applicants are encouraged to provide this information at the time of application in order to prevent review, approval and/or contracting delays (if applicable). Below, you will find a list of Frequently Asked Questions to assist you with compiling the required information. If you have additional questions regarding documentation requirements or unanswered questions, please contact the NFWF staff representative listed in the RFP or your Grants Administrator.

CONTACT INFORMATION

If you have questions concerning your application, please contact the staff member listed in your RFP. You can also email [info@nfwf.org](mailto:info@nfwf.org).

DUE DATES

- 1/14/2020  
RESTORE Colorado Program  
Applicant Webinar
- 1/15/2020  
Hurricane Response  
Marine Debris Removal Fund  
Full Proposal Deadline
- 1/15/2020  
Resilient Communities Program  
Applicant Webinar
- 1/16/2020  
Sustain Our Great Lakes

For details on what documents you need to submit and for FAQs regarding financial documents, go here: [www.nfwf.org/whatwedo/grants/applicants/Pages/required-financial-docs.aspx](http://www.nfwf.org/whatwedo/grants/applicants/Pages/required-financial-docs.aspx)



# Application Assistance

## Program Page

<https://www.nfwf.org/greatlakes/Pages/home.aspx>

## RFP:

<https://www.nfwf.org/greatlakes/Pages/2020rfp.aspx>

## TipSheet:

<https://www.nfwf.org/greatlakes/Documents/2020tipsheet.pdf>

## Technical Assistance / Easygrants Helpdesk:

Email: [Easygrants@nfwf.org](mailto:Easygrants@nfwf.org)

Voicemail: 202-595-2497

Hours: 9:00 am to 5:00 pm ET, Monday-Friday.

Include: your name, proposal ID #, e-mail address, phone number, program you are applying to, and a description of the issue.



# New Required Upload – Full Proposal

- Outcome and Metric Tracking document
  - Full proposal upload requirement – download template from Easygrants
  - Objective: provide additional data/details for metrics and outcomes to enhance full proposal narrative
  - Fill out sections corresponding to funding category
    - Streams
    - Wetlands
    - GSI
    - Invasive Species
  - Provide additional priority species data, approaches to calculating metrics/outcomes, and other relevant info



# Additional Application Requirements

- Applicants proposing removal or modification of **fish passage barriers**
  - Consultation with Sea Lamprey Control Program (Program)
  - Pre-Proposal: Initiate consultation with Program
  - Full-Proposal: Provide evidence that barriers have been approved/reviewed by program
- Applicants proposing **phragmites control**
  - Demonstrate consideration of Phragmites Adaptive Management Framework (PAMF) to inform control practices and long term maintenance
  - To learn more, visit: <http://www.greatlakesphragmites.net/pamf/>
  - To connect with PAMF/ask questions, email: [pamf@glc.org](mailto:pamf@glc.org)



# Regulatory Compliance

- National Environmental Policy Act
- Endangered Species Act
- National Historic Preservation Act
- Data Quality Assurance
- Other applicable regulations





# Timeline

In Person Workshop:	Friday January 31, 2020 ( <b>REGISTER BY Jan. 28<sup>th</sup>!</b> )
Pre-Proposal Due Date:	<b><u>Tuesday February 11<sup>th</sup>, 11:59 PM ET</u></b>
Invites to Full Proposal:	Mid-March 2020
Full Proposal Due Date:	<b><u>Thursday, April 16<sup>th</sup>, 11:59pm ET</u></b>
Awards Announced:	August 2020



# Questions?





# Contacts

## Programmatic Questions

### **Aislinn Gauchay**

Program Director

Great Lakes

Phone: 612-564-7284

Email: [Aislinn.Gauchay@nfwf.org](mailto:Aislinn.Gauchay@nfwf.org)

### **Traci Giefer**

Program Manager

Great Lakes

Phone: 612-564-7296

Email: [Traci.Giefer@nfwf.org](mailto:Traci.Giefer@nfwf.org)



## Application/Easygrants Questions

### **Daley Burns**

Regional Coordinator

Phone: 202-595-2440

Email: [daley.burns@nfwf.org](mailto:daley.burns@nfwf.org)



# SUSTAIN OUR GREATLAKES



CROWN FAMILY PHILANTHROPIES



[www.nfwf.org/greatlakes](http://www.nfwf.org/greatlakes)

Twitter: [@SOGL](https://twitter.com/SOGL)

Facebook: <https://www.facebook.com/FishandWildlife>