



NFWF

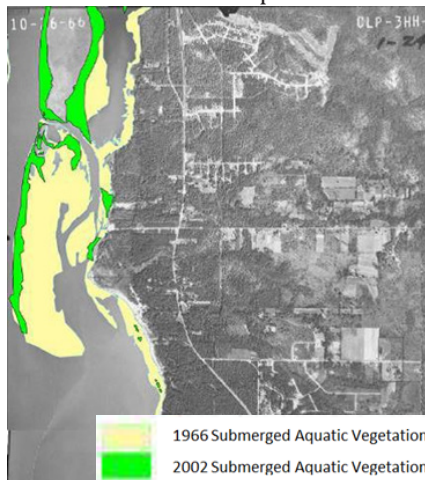
Gulf Environmental Benefit Fund

ALABAMA

D'Olive Watershed Restoration

This project proposes to restore degraded streams and install management measures to reduce the downstream impacts in the D'Olive watershed through a combination of stormwater retrofits, stream restorations and detailed monitoring. Stabilization of these stream segments will significantly reduce sediment loading in the northeast quadrant of Mobile Bay, improving the quality and clarity of the water necessary for re-establishing submerged aquatic vegetation (SAV) beds in the upper Bay. SAV beds provide critical nursery areas for important species of shellfish and finfish.

The watershed has faced excessive erosion and sedimentation since the 1970's that has dramatically reduced the extent of seagrass beds in portions of Mobile Bay. Stormwater runoff from new developments has significantly impacted watershed morphology, function, and hydrology causing stream channel instability, head-cutting, mass slumping, and wetlands degradation. Altered hydrology, loss of natural wetlands and riparian areas, and inadequate natural flood plains have negatively impacted aquatic and wildlife species' survival and habitat. This project would complement earlier restoration work and is part of a broader restoration strategy envisioned in the 2002 Comprehensive Conservation Management Plan for the Mobile Bay Estuary. Work will include projects on three distinct tributaries of the D'Olive watershed and will significantly contribute to improved water quality and habitat creation in D'Olive and Mobile Bays.



Improvement in the highly impaired D'Olive Watershed (above-left) is critical to the ecological function of both D'Olive Bay and Mobile Bay. The project will significantly reduce the largest source of local sediments to Mobile Bay and improve conditions for degraded SAV beds (above-right).

AT A GLANCE

RECIPIENTS:

Mobile Bay NEP

AWARD AMOUNT:

*\$12,781,000

PARTNERS:

DCNR- State Lands Division, AL Department of Environmental Management, AL Department of Transportation, Geological Survey of AL, Baldwin County, City of Daphne, City of Spanish Fort

LOCATION:

Baldwin County

AWARD DATE:

November 2013

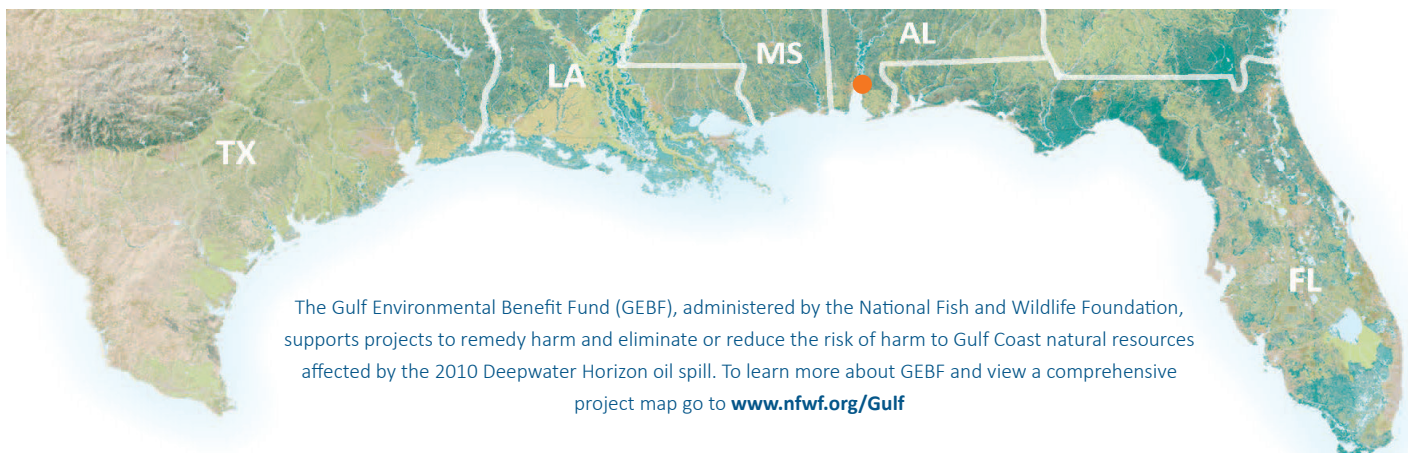
STATUS:

Active

PROGRESS UPDATE:

Construction on tributary to Tiawasee Creek to begin spring 2020. Construction for the Montclair Tiawasee project will be completed spring 2020.

**Project was amended in August 2015 to add \$6M to increase the project scope related to historic storms.*



The Gulf Environmental Benefit Fund (GEBF), administered by the National Fish and Wildlife Foundation, supports projects to remedy harm and eliminate or reduce the risk of harm to Gulf Coast natural resources affected by the 2010 Deepwater Horizon oil spill. To learn more about GEBF and view a comprehensive project map go to www.nfwf.org/Gulf