



NFWF

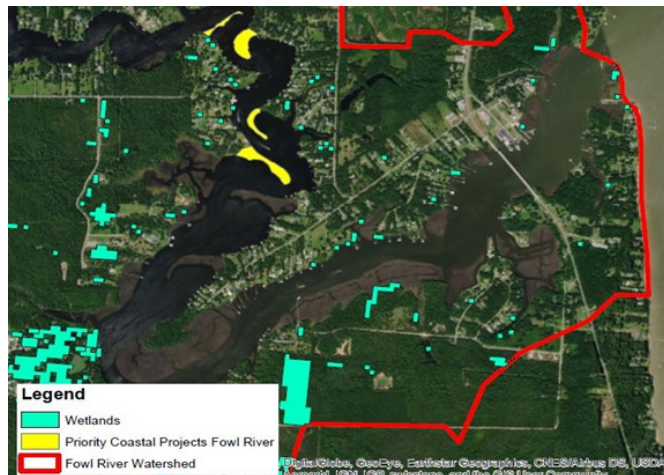
Gulf Environmental Benefit Fund

ALABAMA

Fowl River Watershed Restoration: Coastal Spits and Wetlands Project- Phase I

Restoration of important coastal spits and wetlands within the lower reaches of Fowl River is a significant priority action identified in the recently completed Fowl River Watershed Management Plan, funded under a prior GEBF award. This project will fund engineering and design studies to develop a solution to stabilize and protect four priority in-river wetland spits and restore marshland throughout the intertidal portions of lower Fowl River. This project will reduce the risk of future harm to habitats necessary for sustaining a healthy fishery and improve water quality from this significant watershed to Mobile Bay.

The Mobile Bay National Estuary Program will oversee an engineering assessment to develop plans for the restoration of coastal marsh habitat, including 7,600 linear feet of priority shoreline along the lower reaches of Fowl River. Additionally, this project will fund hydrologic modeling and a marsh health and recovery study for the watershed to provide managers a valuable tool to guide and prioritize future restoration projects throughout the Watershed.



Restoration of coastal spits in Fowl River, indicated in yellow in the photo above, surfaced as a priority in the recently completed Fowl River Watershed Management Plan.

AT A GLANCE

RECIPIENTS: Mobile Bay National Estuary Program

AWARD AMOUNT: \$1,127,000

PARTNERS: Alabama Department of Conservation and Natural Resources

Alabama Department of Environmental Management

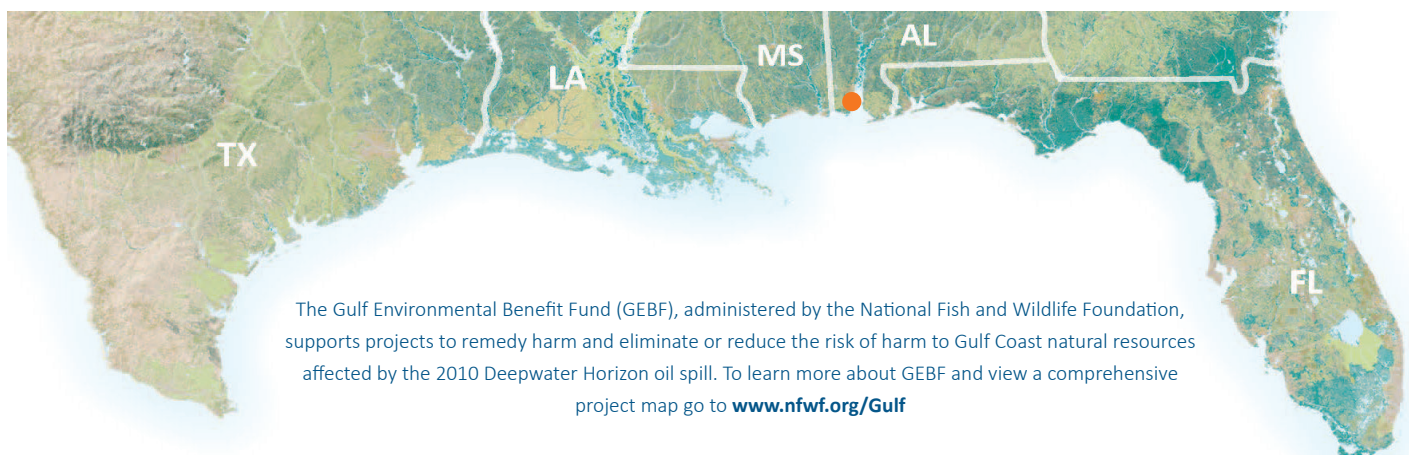
Mobile County

LOCATION: Lower Fowl River Watershed, Mobile County

AWARD DATE: November 2016

STATUS: Active

PROGRESS UPDATE: Engineering and design contract executed early last quarter. Preparing landowner access agreements to perform work.



The Gulf Environmental Benefit Fund (GEBF), administered by the National Fish and Wildlife Foundation, supports projects to remedy harm and eliminate or reduce the risk of harm to Gulf Coast natural resources affected by the 2010 Deepwater Horizon oil spill. To learn more about GEBF and view a comprehensive project map go to [www.nfwf.org/Gulf](http://www.nfwf.org/Gulf)