



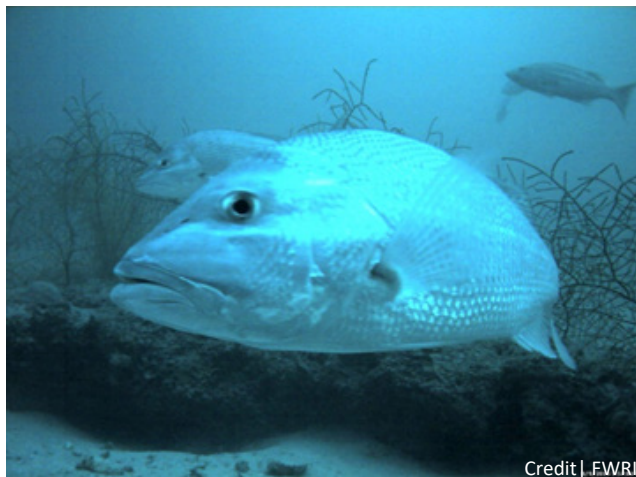
NFWF | Gulf Environmental Benefit Fund

FLORIDA

Enhanced Assessment of Gulf of Mexico Fisheries – Phase IV

This project was the fourth year of funding for the Florida Gulf of Mexico fisheries assessment and supported the second year of full scale implementation. This project built upon and expanded previous GEBF investments in both fisheries-dependent and -independent data collection begun in 2013. Reef fish, particularly red snapper, have historically been subject to overfishing and habitat loss, causing significant decline in stocks. The largest single impediment to effective management of Gulf of Mexico reef fisheries remains the lack of sound data related to both catch effort and population levels. This lack of reliable data is particularly evident in relation to the recreational fishery, a significant and growing component.

This project continued a significant expansion of the collection of data on both catch effort and stock assessment of reef fish in the Panhandle and eastern Gulf of Mexico to provide a greater understanding of the potential long-term impacts of the Deepwater Horizon oil spill on fisheries. Additional funding is being requested to leverage potential funding available through NFWF’s electronic monitoring program under a cooperative agreement with NOAA.



Credit | FWRL

Increased data collection for key species, such as the snapper pictured above, create a more accurate stock assessment and influence best practices in Florida Gulf Coast fisheries.

AT A GLANCE

RECIPIENT:
Florida Fish and Wildlife Conservation Commission

AWARD AMOUNT:
\$5,377,245

LOCATION:
Florida Gulf Coast

AWARD DATE:
November 2016

STATUS:
Closed

PROGRESS UPDATE:
Enhanced collection of fishery-dependent and fishery-independent data and the fourth full year of the Gulf Reef Fish Survey has been completed. Lessons learned will guide the final year of the program. This project is now closed. (December 2018)



The Gulf Environmental Benefit Fund (GEBF), administered by the National Fish and Wildlife Foundation, supports projects to remedy harm and eliminate or reduce the risk of harm to Gulf Coast natural resources affected by the 2010 Deepwater Horizon oil spill. To learn more about GEBF and view a comprehensive project map go to www.nfwf.org/Gulf