



NFWF

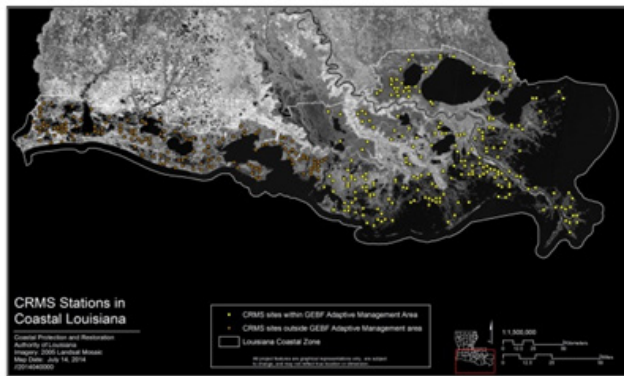
Gulf Environmental Benefit Fund

LOUISIANA

Adaptive Management: Louisiana River Diversions & Barrier Islands – Phase II

This project will continue the support of elements of the Coastal Protection and Restoration Authority (CPRA) of Louisiana’s Adaptive Management Program that directly benefit river diversion and barrier island restoration projects included within the Louisiana Master Plan. With these investments, the CPRA will systematically monitor and consider new information gathered in response to implementation of the State’s Master Plan, and make appropriate adjustments to planning, designing, monitoring, operating, and implementing barrier island and river diversion projects to ensure continued progress toward achieving objectives contained in the Master Plan.

Four critical adaptive management efforts will be supported through this project: 1) continued support of the Coastwide Reference Monitoring System to provide data on habitat changes, salinity trends and relative sea level rise; 2) the System Wide Assessment and Monitoring Program to provide data on water quality and hydrology; 3) coastal fisheries monitoring to provide data on habitat utilization and response to restoration by important recreational and commercial fisheries species; and 4) the Barrier Island Comprehensive Monitoring Program to provide data on the status and evolution of Louisiana’s barrier shoreline.



The information and analysis generated by this project will enable CPRA to adjust implementation of barrier island and river diversion projects to achieve optimal impact and sustainability.

AT A GLANCE

RECIPIENT: Louisiana Coastal Protection and Restoration Authority (CPRA)

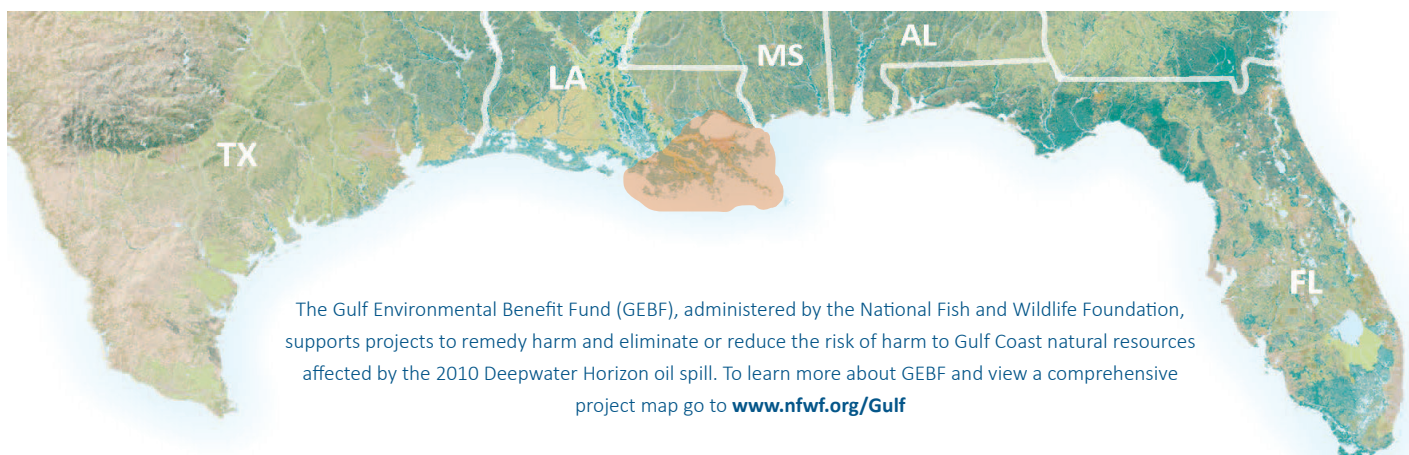
AWARD AMOUNT: \$19,632,100

LOCATION: Louisiana Gulf Coast

AWARD DATE: November 2016

STATUS: Active

PROGRESS UPDATE: Water quality data collection, wave and currents stations, and synthesis of BS/PO and Barataria data work is ongoing.



The Gulf Environmental Benefit Fund (GEBF), administered by the National Fish and Wildlife Foundation, supports projects to remedy harm and eliminate or reduce the risk of harm to Gulf Coast natural resources affected by the 2010 Deepwater Horizon oil spill. To learn more about GEBF and view a comprehensive project map go to www.nfwf.org/Gulf