



NFWF

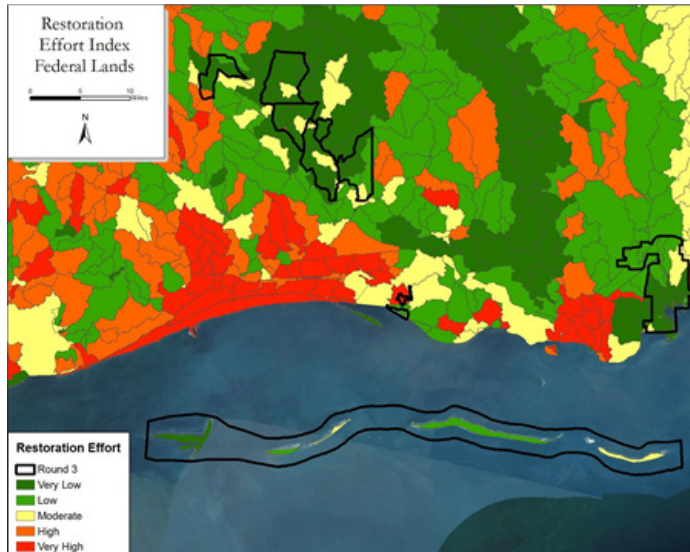
Gulf Environmental Benefit Fund

MISSISSIPPI

Habitat Restoration: Federal Lands Program

This project will enhance and restore habitat on federal lands in coastal Mississippi. Anticipated outcomes for key focal habitats include restoration of over 30,000 acres through invasive species removal, forest thinning and prescribed burning on lands contained within Grand Bay National Wildlife Refuge, Gulf Islands National Seashore and the De Soto National Forest (Tchoutacabouffa River/Tuxachanie Creek watershed). The project also includes control of non-native mammals on Horn, Sand, and Petit Bois Islands within the Gulf Islands National Seashore.

This work expands efforts previously funded under the Gulf Environmental Benefit Fund that are conducting invasive species removal and fire management on state lands along the Mississippi Coast. This project focuses on restoring and conserving coastal habitat on federal lands to improve and maintain their benefit to fish and wildlife, enhance water quality to coastal bays through improved forest management, and promote resilience within coastal ecosystems.



This project will expand previously funded invasive species management on priority state lands to key federally managed lands in coastal Mississippi.

AT A GLANCE

RECIPIENTS: Mississippi Department of Environmental Quality

US Fish & Wildlife Service

National Park Service

USDA Forest Service

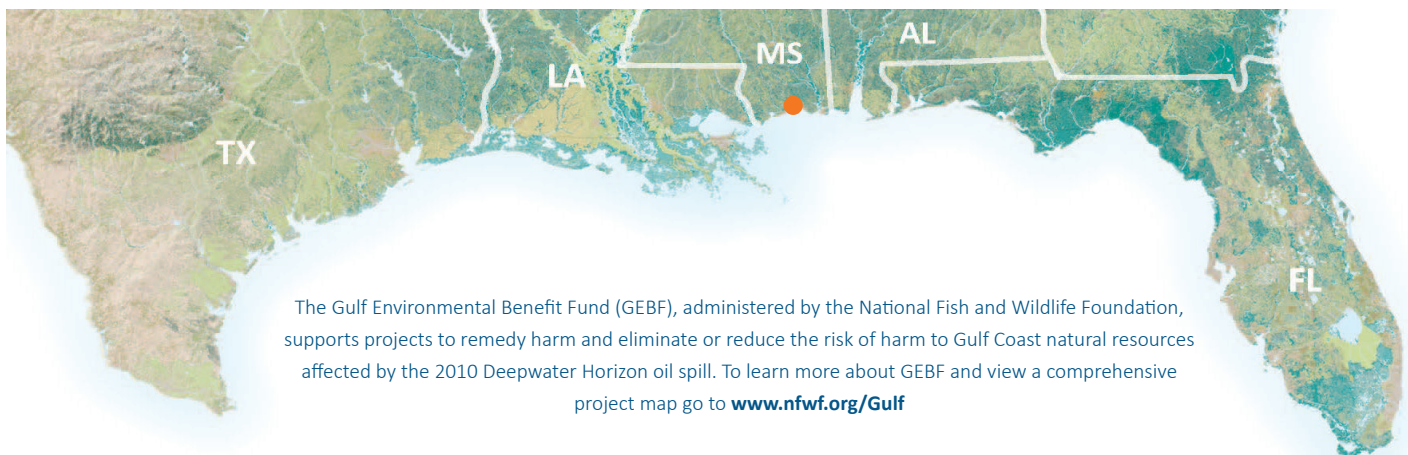
AWARD AMOUNT: \$9,905,300

LOCATION: Harrison and Jackson Counties, Mississippi

AWARD DATE: November 2015

STATUS: Active

PROGRESS UPDATE: A sub-grant agreement for habitat restoration was executed with USGS and a second sub-grant agreement with USFS is under negotiation.



The Gulf Environmental Benefit Fund (GEBF), administered by the National Fish and Wildlife Foundation, supports projects to remedy harm and eliminate or reduce the risk of harm to Gulf Coast natural resources affected by the 2010 Deepwater Horizon oil spill. To learn more about GEBF and view a comprehensive project map go to www.nfwf.org/Gulf