



Central Appalachia Habitat Stewardship Program

Applicant Webinar, May 20, 2020

Black bear

AGENDA

1:30 PM – 3:00 PM

1. NFWF Roles
2. About NFWF (1:35)
3. Central Apps Program Overview (1:40)
4. Review of 2020 RFP (1:50)
5. Metrics (2:15)
6. Calculating Indirect Costs and Budgeting Best Practices (2:30)
7. Using EasyGrants (2:40)
8. Questions (2:45)



1. NFWF Roles



Amanda Bassow, Director,
Northeastern Regional Office



John Lamoreux, Director, Fish
and Wildlife Conservation



John Wright, Manager,
Northeastern Regional Office



Scott Hall, Senior Scientist,
Bird Conservation



Katie Ombalski, Field Liaison
Woods and Waters Consulting



About Us

Who We Are

- Chartered by Congress in 1984
- 30 member Board appointed by Secretary of the Interior,
 - Includes FWS Director and NOAA Administrator

What We Do

- Sustain, restore and enhance wildlife
- Bring collaboration among federal agencies and private sector

How We Do It

- Leverage public funding with private money – average 3:1



Bald eagle

NFWF is

- An implementer – we fund projects

NFWF is not

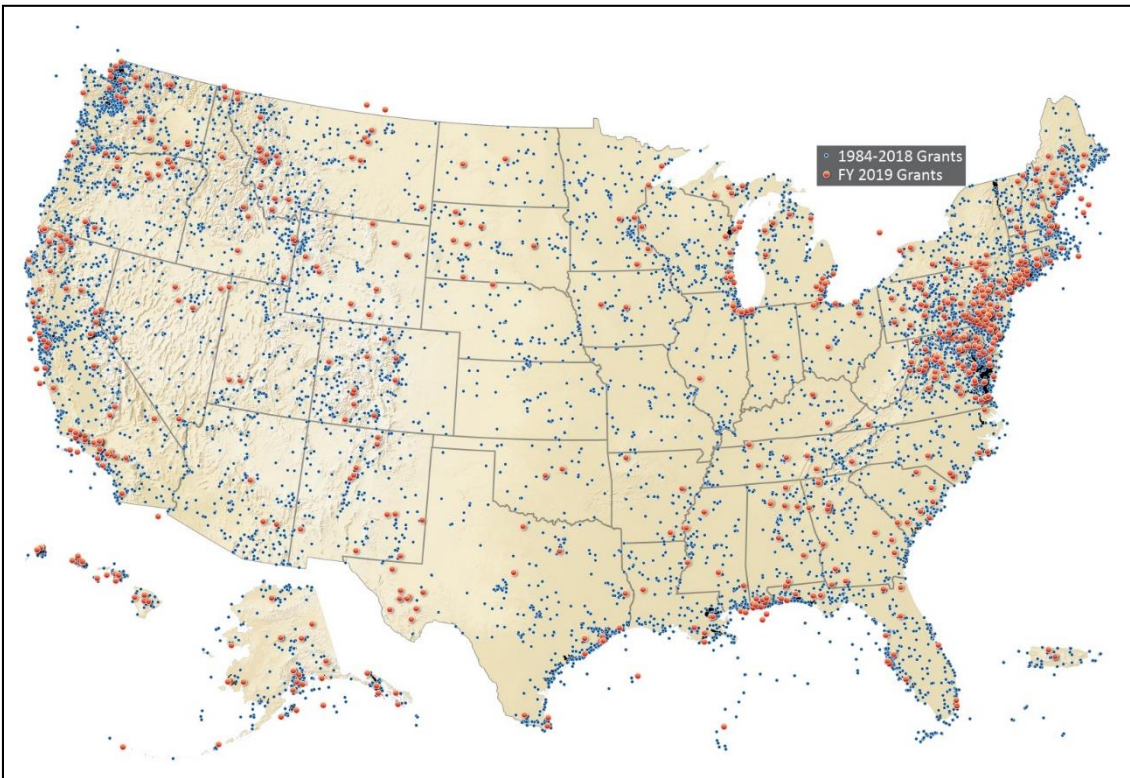
- An advocacy organization that engages in lobbying or litigation



NFWF Conservation Investments (1984 – 2019)

Overview of NFWF Funds Invested

	FY 2018	FY 2019	FY 1984 – FY 2019
Federal Funds	\$ 106.7 million	\$ 141.0 million	\$ 1.42 billion
Non-Federal Funds	\$ 196.1 million	\$ 366.0 million	\$ 2.04 billion
Grantee Matching Funds	\$ 156.4 million	\$ 245.0 million	\$ 2.63 billion
Total Funds Invested	\$ 459.2 million	\$ 752.0 million	\$ 6.09 billion
# of Projects Awarded	758	931	18,670



- \$507 million awarded to 931 projects in 2019
- More than \$3.46 billion awarded since 1984
- 18,670 Investments
- 5,000 organizations
- All 50+ states

Central Appalachia Habitat Stewardship Program: Overview

- ✓ Grants between \$50k and \$200k to restore and sustain healthy forests and rivers
- ✓ Approximately 10 to 12 grants awarded each year
- ✓ 1:1 non-federal match strongly encouraged
- ✓ Nonprofits, state and local governments, tribes, and educational institutions are eligible



Central Appalachia Habitat Stewardship Program

Launched in 2017

Accomplishments to date include...

- 35 projects awarded for \$4.7M with \$5.9M in grantee match
- Improving habitat on **57,000 acres of forest**
- Removing 15 barriers, opening **179 miles of upstream habitat**
- Restoring **24 miles of streamside forest**





National Fish and Wildlife Foundation
Central Appalachia Business Plan

March 2019

- In March 2019 NFWF's board approved the Central Appalachia Business Plan
- Plan will help guide NFWF investments in the region for the next ten years, in order to
 - ✓ improve the quality and connectivity of forest and freshwater habitat
 - ✓ increase the distribution and abundance of native fish, birds and other wildlife

www.nfwf.org/central-appalachia-habitat-stewardship-program



4. REVIEW OF REQUEST FOR PROPOSALS

- **Geographic Focus**
- **Program Priorities**
- **Metrics**
- **Eligibility**
- **Evaluation Criteria**
- **Compliance**
- **Process, Timeline, Important Reminders**



2020 Request for Proposals

Applicant Webinar: Wed, May 20th
Proposals Due: Thursday, June 25th
Review and Notification: July – October
Awards Announced: Mid-November

Grant Implementation: 2 to 3 years

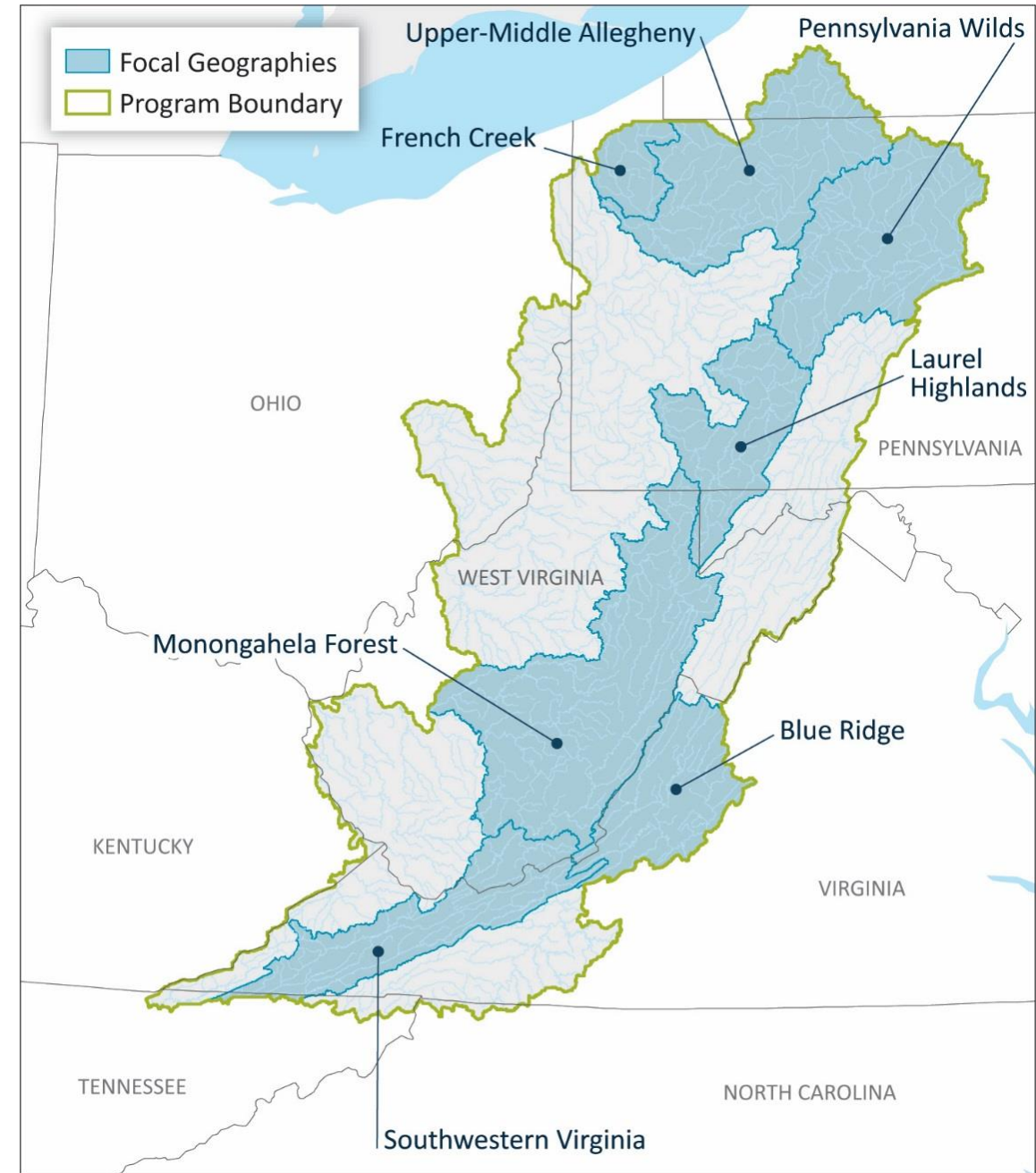
Awards: \$50k to \$200k each
Match: 1:1 non-federal match ***encouraged***

<https://www.nfwf.org/programs/central-appalachia-habitat-stewardship-program>



Geographic Focus

- Projects within the gold boundary are eligible
- Priority, in most cases, will be given to projects within the blue “focal geographies”
- Focal geographies are comprised of HUC8 watersheds
- Links in RFP to interactive map and business plan portal with downloadable shape file of boundaries



Program Priorities

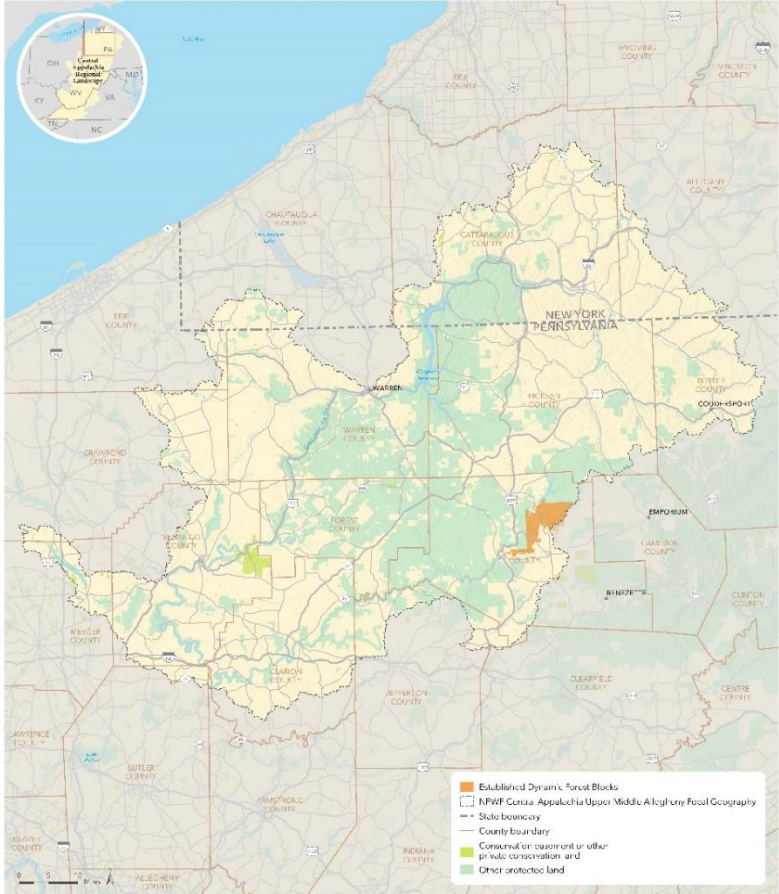
1. Restore and Manage Forest Blocks in Focal Geographies
2. Target Outreach and Assistance to Key Forest Landowners and Practitioners
3. Sustain and Improve High Integrity Habitat for Eastern Brook Trout
4. Restore Eastern Hellbender and Freshwater Mussel Habitat and Increase Occupancy



Priority 1: Restore and Manage Forest Blocks

- Create a mosaic of mixed-aged forests that support a diversity of bird and wildlife species
- Use a range of practices and prescriptions to create a diversity of age and structure across contiguous forest blocks of at least 5,000 acres
- Continued implementation in established blocks within the Upper-Middle Allegheny, Pennsylvania Wilds and Laurel Highlands focal geographies (*see maps*)
- Establish new blocks in the Monongahela Forest and Blue Ridge focal geographies

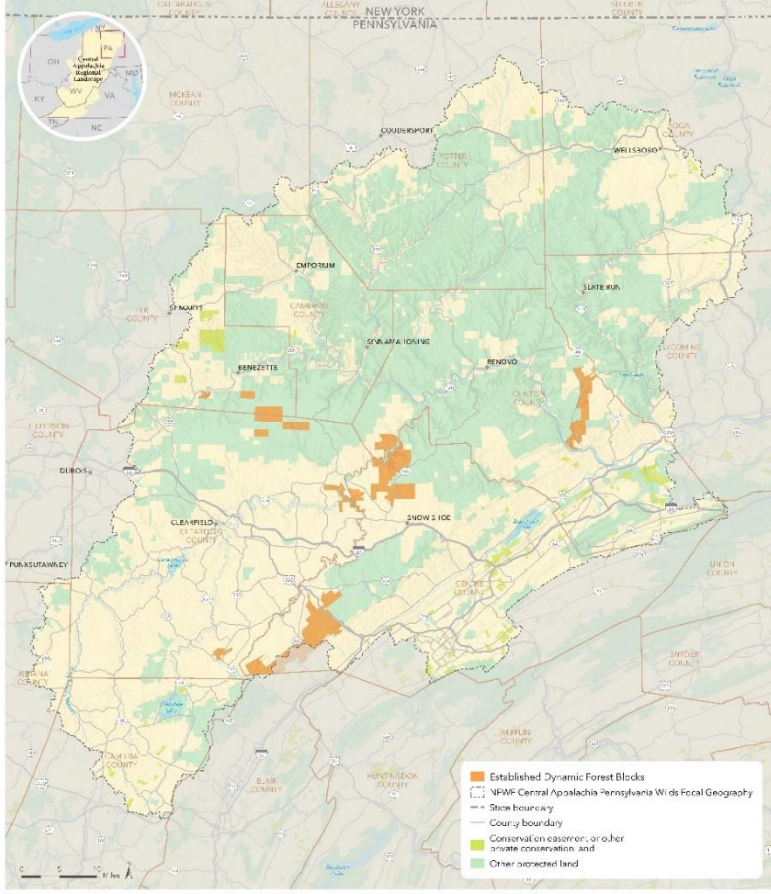
Established and Developing Forest Blocks



Upper Middle Allegheny Established Dynamic Forest Blocks

NFWF CENTRAL APPALACHIA PROGRAM

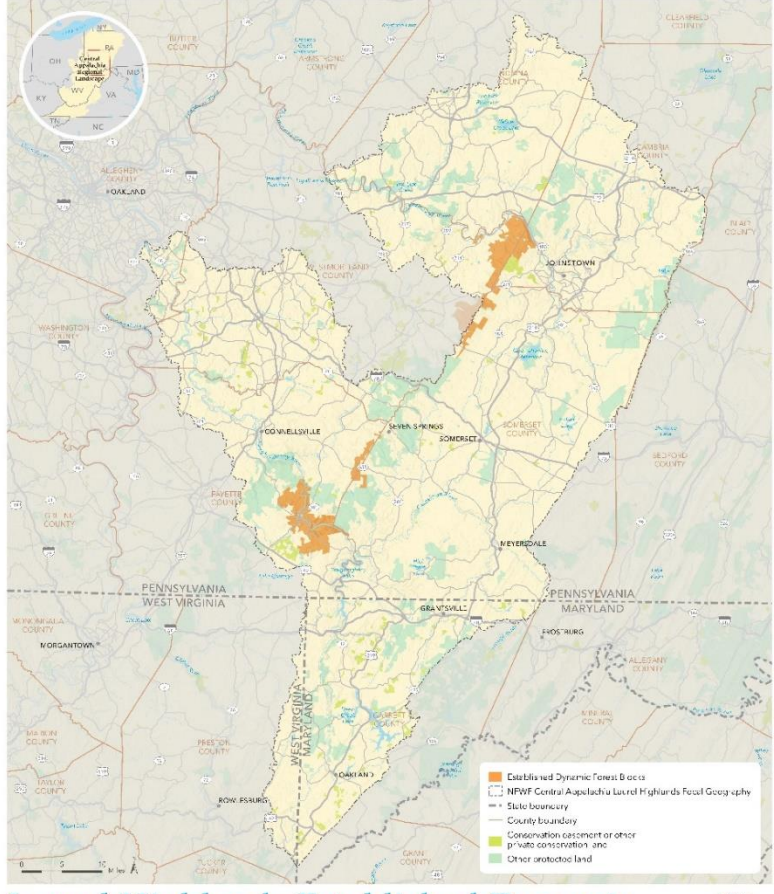
April 15, 2008. Copyright © 2008 The Nature Conservancy. The Pennsylvania Natural Heritage and Endowment is a federal program jointly administered by The Pennsylvania Department of Environmental Protection and The Pennsylvania Department of Agriculture. All rights reserved. For more information, visit www.pennherf.org.



Pennsylvania Wilds Established Dynamic Forest Blocks

NFWF CENTRAL APPALACHIA PROGRAM

April 14, 2008. Copyright © 2008 The Nature Conservancy. The Pennsylvania Natural Heritage and Endowment is a federal program jointly administered by The Pennsylvania Department of Environmental Protection and The Pennsylvania Department of Agriculture. All rights reserved. For more information, visit www.pennherf.org.



Laurel Highlands Established Dynamic Forest Blocks

NFWF CENTRAL APPALACHIA PROGRAM

April 14, 2008. Copyright © 2008 The Nature Conservancy. The Pennsylvania Natural Heritage and Endowment is a federal program jointly administered by The Pennsylvania Department of Environmental Protection and The Pennsylvania Department of Agriculture. All rights reserved. For more information, visit www.pennherf.org.



- 
- **Assessment and Planning**
 - **Forest Block Restoration**
 - **Restoration Response Monitoring**

Priority 2: Target Outreach and Assistance



SAMPLE FOREST MANAGEMENT PLAN

Submitted to: DDM, Division of Forests & Parks
For enrollment in CH6161A and/or Forest Stewardship Program

CHECK-OFFS

CH. 61 cert. ☒ CH. 61A cert. ☐ STWSHP. new ☒ C-S SIP 1 ☒ other ☐
recert. ☐ amend. ☐ revis. ☐

OWNER, PROPERTY, and PREPARER INFORMATION

Property Owner(s) Joseph and Catherine Sample
Mailing Address 132 Maple Rd. Shutesbury, MA 01072
Property Location: Town(s) Shutesbury
Plan Preparer Chris Stewart
Mailing Address 24 Big Wood Drive Lake Pleasant, MA 01134

RECORDS

Assessor's Map No.	Lot/Parcel No.	Deed Book	Deed Page	Total Acres
412	43	17115	181	37
TOTALS				37

Excluded Area Description (If additional space needed, continue on separate paper)
Beginning at a point along the southern boundary approximately 787.25 ft. S85W 255.6', thence NSW 255.6', thence N85E 255.6', thence SSE 255.6',


HISTORY

Year acquired 1978 Year management began 2001
Is subdivision plan on file with municipality? Yes ☐ No ☒
Are boundaries blazed/painted? Yes ☐ No ☒
Have forest products been cut within past 2 years? Yes ☐ No ☒
Have treatments been prescribed, but not carried out (last 10 years if plan is a revision)? Yes ☐ No ☒
reason _____

Cutting Plan # _____ **Treatment** _____ **Yield** _____ **Value** _____

(If additional space needed, continue on separate page)

Case No. _____ Orig. Case No. _____
Owner ID _____ Add. Case No. _____
Date Rec'd _____ Ecoregion _____
Plan Period _____ Topo Name Shutesbury
Rare Spp. Ilab. _____ River Basin Connecticut

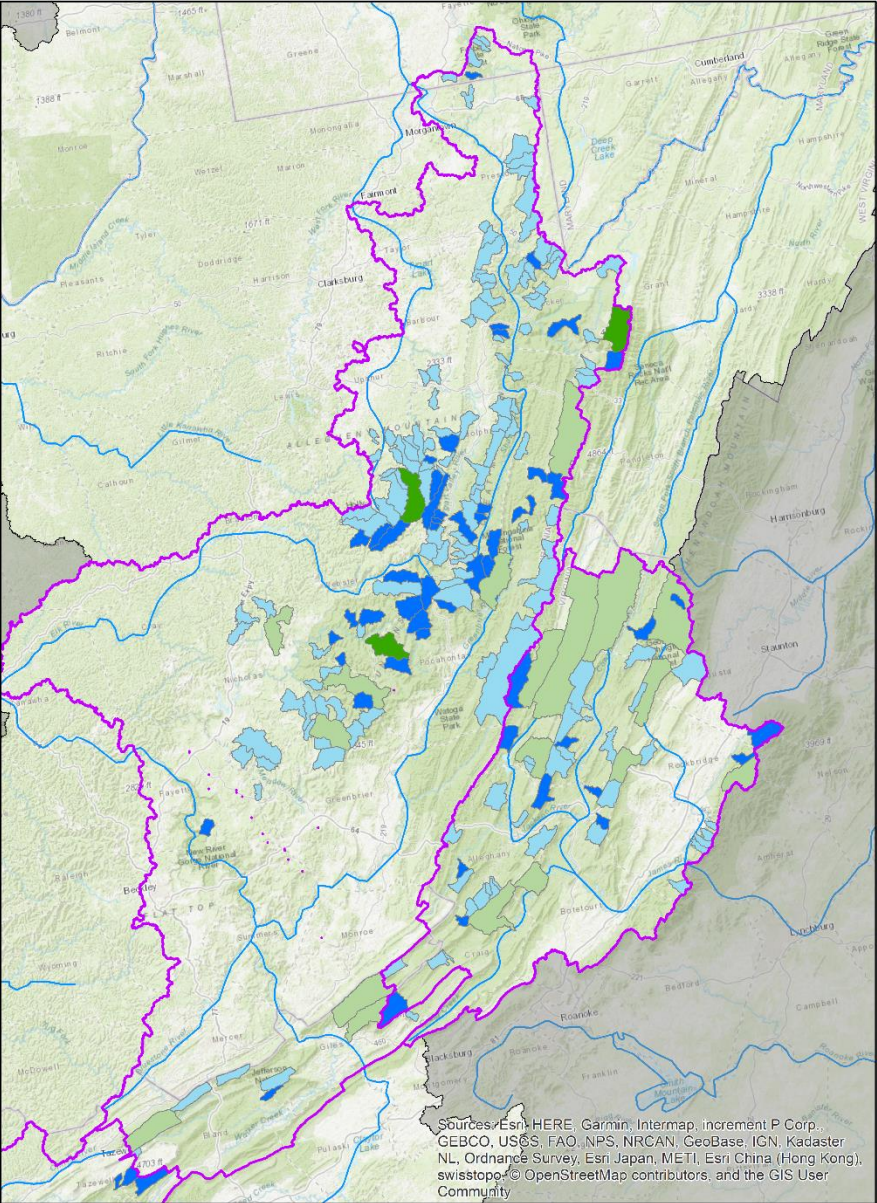
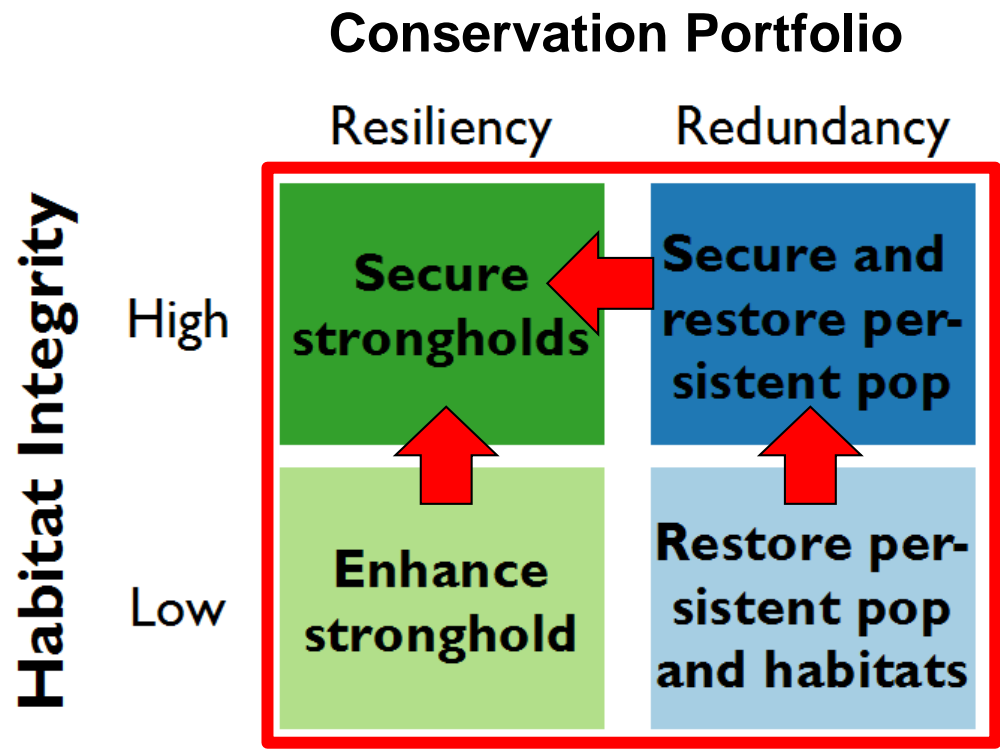


An underwater photograph of three brook trout swimming in a stream. The fish are positioned diagonally across the frame, with one in the foreground and two slightly behind it. They have dark, mottled bodies with numerous yellow and orange spots. Their fins are a reddish-brown color. The background shows the stream bed with rocks and a dense layer of fallen autumn leaves in shades of yellow, orange, and brown, partially submerged in the water.

Priority 3: Sustain and Improve Habitat for Brook Trout

- **Patch Assessments**
- **Restore Aquatic Connectivity within and between Priority Population Patches**
- **Restore Riparian Forest**
- **Improve Conservation on Agricultural Lands**
- **Reduce Erosion and Sedimentation from Dirt and Gravel Roads**

Targeting EBT Population Patches within Focal Geographies



www.tu.org/ebt-portfolio-rwa

EBT Patch Assessments

- Detailed map of patch
- EBT occupancy
- Habitat factors limiting EBT
 - ✓ Passage barriers
 - ✓ Water quality **hot** spots
 - ✓ Erosion and sedimentation
 - ✓ Gaps in buffers and livestock exclusion
 - ✓ Presence of invasive species
- Human Dimensions, e.g., conservation capacity, landowner willingness



NFWF

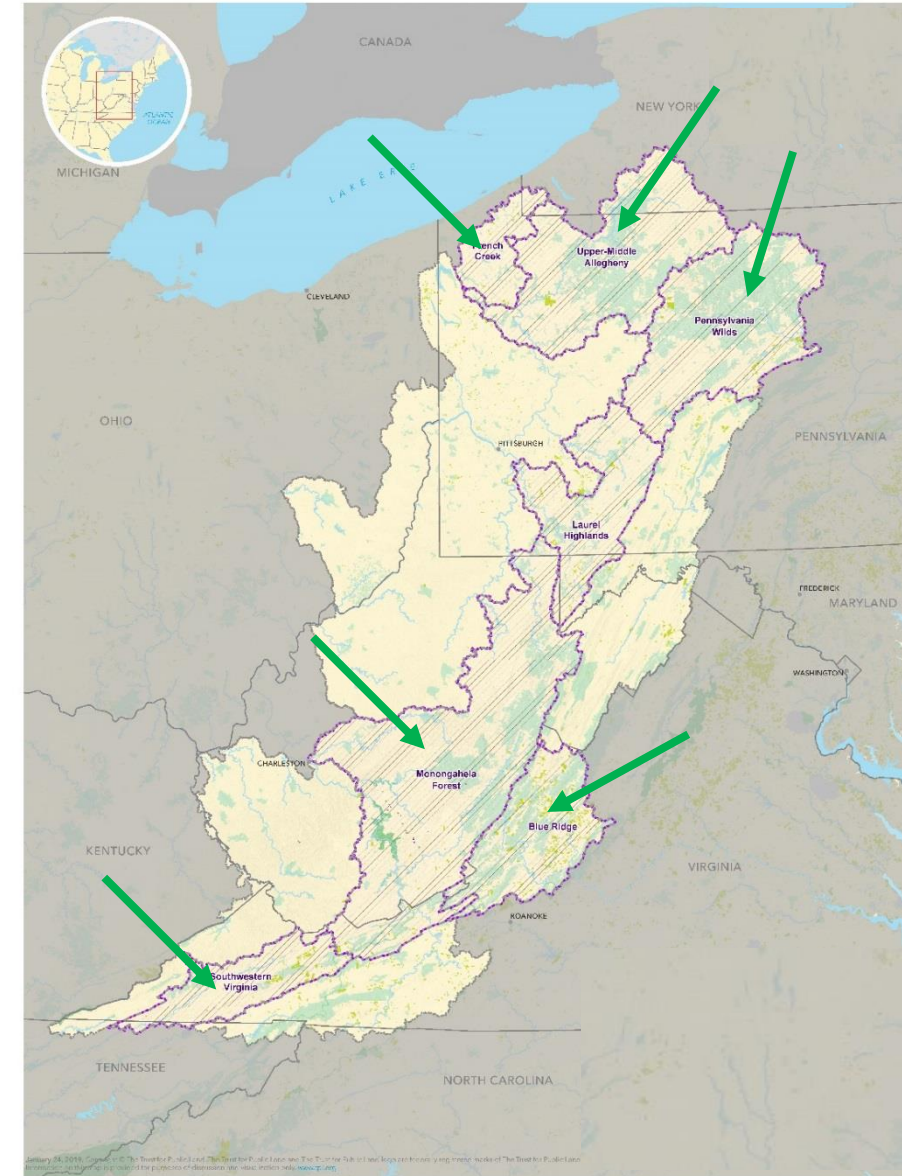
Aquatic Connectivity, Riparian Forests and Conservation on Ag Lands



Priority 4: Restore Hellbender and Mussel Habitat and Increase Occupancy



- AOP for hellbender and mussel host species
- Reduce sedimentation
- Riparian buffers
- Livestock exclusion
- Leverage upstream EBT habitat restoration



Project Metrics: Strategy 1

Restore and Manage Forest Blocks in Focal Geographies	Assessment/ Planning	Central Apps - Tool development for decision-making - # tools developed
	Forest Block Restoration	Central Apps - Forest Management Planning - # of acres covered by dynamic forest plans
		Central Apps - Golden-Winged Warbler - Improved management practices - Acres under improved management
		Central Apps - Wood Thrush - Improved management practices - Acres under improved management
		Central Apps - Cerulean Warbler - Improved management practices - Acres under improved management
		Central Apps - Monitoring - Acres being monitored
	Species Outcomes	Central Apps - Cerulean Warbler - Population - # sites occupied by species
		Central Apps - Wood Thrush - Population - # sites occupied by species
		Central Apps - Golden-Winged Warbler - Population - # sites occupied by species

Project Metrics: Strategy 2

Target Outreach and Assistance to Key Forest Landowners and Practitioners	Outreach and Technical Assistance	Central Apps - Outreach/ Education/ Technical Assistance - # people reached by outreach, training, or technical assistance activities
		Central Apps - Outreach/ Education/ Technical Assistance - # of people demonstrating a minimum level of behavior change
	Landowner Demonstration Projects	Central Apps - Golden-Winged Warbler - Improved management practices - Acres under improved management
		Central Apps - Wood Thrush - Improved management practices - Acres under improved management
		Central Apps - Cerulean Warbler - Improved management practices - Acres under improved management
		Central Apps - Outreach/ Education/ Technical Assistance - Conservation demonstration sites

Project Metrics: Strategy 3

Sustain and Improve High Integrity Habitat for Eastern Brook Trout	Eastern Brook Trout Patch Assessments	Central Apps - Research - # of sites assessed
	Restoration Response Monitoring	Central Apps - Monitoring - # sites being monitored
	Restore Aquatic Connectivity within and between Priority Population Patches	Central Apps - Fish passage improvements - # passage barriers rectified
		Central Apps - Fish passage improvements - Miles of stream opened
	Restore Riparian Forests	Central Apps - Riparian restoration - Miles restored
	Improve Conservation on Agricultural Lands	Central Apps - BMP implementation for nutrient or sediment reduction - Acres with BMPs to reduce nutrient or sediment loads
	Improve Conservation on Agricultural Lands	Central Apps - BMP implementation for livestock fencing - Miles of fencing installed
		Central Apps - Stream restoration - Miles restored
		Central Apps - Wetland restoration - Acres restored
	Reduce Erosion and Sedimentation from Dirt and Gravel Roads	Central Apps - BMP implementation for road improvements - Miles of road improved
	Eastern Brook Trout Outcome	Central Apps - Habitat Quality - # of habitat units improved

Project Metrics: Strategy 4 +

Restore Eastern Hellbender and Freshwater Mussel Habitat and Increase Occupancy	Re-establish Hellbender Occupancy and Improve Habitat*	Central Apps - Nesting Sites - # nesting sites installed
		Central Apps - Hellbender - Population - Miles of habitat occupied
	Re-establish Freshwater Mussel Occupancy and Improve Habitat*	Central Apps - Captive breeding/ rearing/ rehab facilities - # individuals released
Other Activities		Central Apps – Conservation easements - Acres protected under long- term easement (permanent or > 30-yr)
		Central Apps - Volunteer participation - # volunteers participating in projects

Eligibility and Match

Eligible and Ineligible Entities

- Eligible: non-profit 501(c) organizations, state government agencies, local governments, municipal governments, Indian tribes and educational institutions
- Ineligible: Federal government agencies, businesses, unincorporated individuals and international organizations

Ineligible Uses of Grant Funds

- Political advocacy, fundraising, lobbying, litigation, terrorist activities or Foreign Corrupt Practices Act violations
- Efforts to comply with legal requirements, including permit conditions, mitigation and settlement agreements

Funding Availability and Match

- Grant size: \$50k - \$200k
- Strongly **encourage** non-federal match of 1:1



Evaluation Criteria

- ✓ Program Goals and Priorities
- ✓ Technical Merit and Work Plan
- ✓ Cost-Effectiveness
- ✓ Monitoring
- ✓ Long-term Sustainability



Compliance

- ✓ 2020 funding is a mix of federal and non-federal sources, so federal requirements for budget, procurement, match all apply
- ✓ Grantees receiving USFWS funds will need to comply with NEPA, ESA, NHPA
- ✓ Grantees will not know until after awards are announced if they are receiving USFWS funds
- ✓ It's best to assume you will need to comply
- ✓ You may review NEPA, ESA and NHPA templates on the program page in order to plan time and resources accordingly



Easygrants Tips

easygrants.nfwf.org

1. Log in with an existing email and password. **Or** create an account **now** – this will give you time to familiarize yourself with the system. If you have trouble logging in, use the help feature.
2. Turn off your pop-up blockers. For Internet Explorer, turn them off again and again... You can also use Chrome, Firefox or Safari.
3. Download and use the **tip sheet** available on the program webpage.
4. You can work on the narrative offline – just download the **Word** document and upload it when you're finished.
5. With the mapping feature – please be as specific as possible AND provide narrative location information on your project.
6. Click save frequently. **Do not click SUBMIT until all sections are complete** Make sure all your check marks on the Review and Submit page are **green**.



Application, Review and Award Process



Final Tips for Applicants

1. Re-read the **RFP** and reference the information provided through the links. Call us if you're confused.
2. These are competitive grants. Projects should address all criteria and have a “**wow**” factor.
3. Include lots of context and details—**don't assume** we know your plan, partnership or watershed.
4. Be strategic first, opportunistic second.
5. Submit your proposal ON OR BEFORE June 25th.
6. Note that NFWF staff will not be “in the office” at 11:59 pm on June 25th!



For Questions and Assistance

John Wright, Manager, Northeastern Regional Office, NFWF

John.Wright@nfwf.org

(202) 595-2478

Amanda Bassow, Director, Northeastern Regional Office, NFWF

Amanda.Bassow@nfwf.org

(202) 412-5023

Katie Ombalski, Principal | Conservation Biologist, Woods and Waters Consulting

Katie@woodswaters.com

(814) 574-7281

Scott Hall, Senior Scientist, Bird Conservation, NFWF

scott.hall@nfwf.org

(202) 595-2465

<https://www.nfwf.org/programs/central-appalachia-habitat-stewardship-program>

Proposals are Due

Thursday, June 25, 2020

**by 11:59 PM Eastern
Time**

**Awards will be announced
in mid-November**



Questions?

