



# Northern Great Plains Program

## NFWF CONTACTS

### Chris West

Director, Rocky Mountain  
Regional Office  
303-398-7042  
chris.west@nfwf.org

### Seth Gallagher

Program Manager,  
Rocky Mountain Regional Office  
303-222-6483  
seth.gallagher@nfwf.org

### Daley Burns

Coordinator,  
Regional Conservation  
daley.burns@nfwf.org  
202-595-2440

## PARTNERS

- Avangrid Foundation
- Noble Energy
- U.S. Bureau of Land Management
- U.S. Fish and Wildlife Service
- USDA Forest Service
- USDA Natural Resources Conservation Service

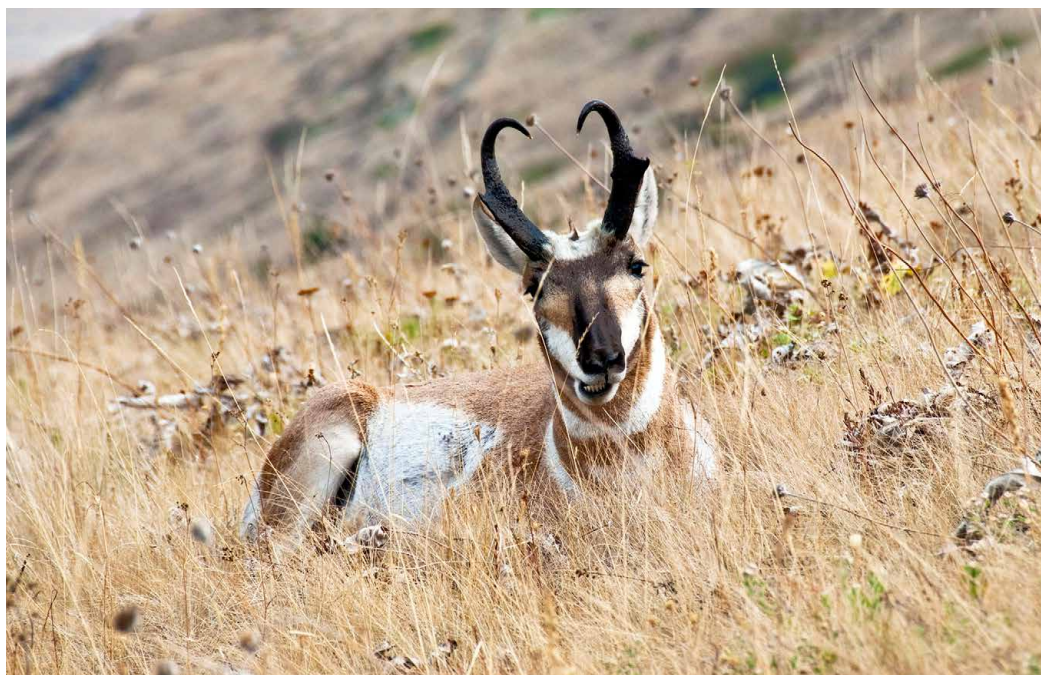
## ABOUT NFWF

Chartered by Congress in 1984, the National Fish and Wildlife Foundation (NFWF) protects and restores the nation's fish, wildlife, plants and habitats. Working with federal, corporate and individual partners, NFWF has funded more than 5,000 organizations and generated a total conservation impact of \$6.1 billion.

Learn more at [www.nfwf.org](http://www.nfwf.org)

## NATIONAL HEADQUARTERS

1133 15th Street, NW  
Suite 1000  
Washington, D.C., 20005  
202-857-0166



Pronghorn

## BACKGROUND

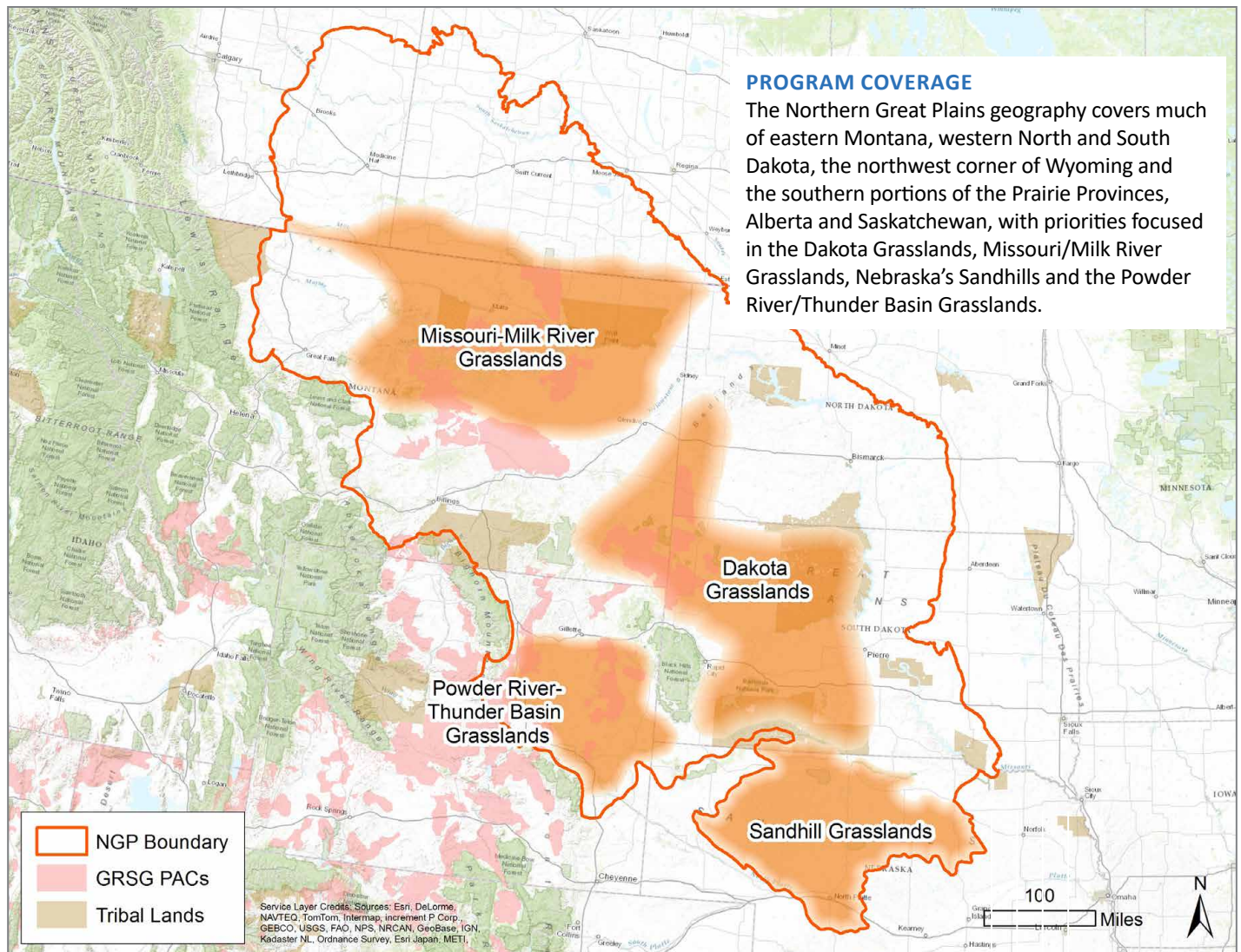
The vast grasslands of the Northern Great Plains support a unique assemblage of wildlife adapted to the wide open spaces. Thanks to generations of land stewardship by ranchers, tribes and public agencies, much of the Northern Great Plains remains as native grassland that is productive for people and wildlife.

Despite changes to the landscape, uniquely adapted grassland species continue to co-exist. Thousands of sage grouse, with their unique leks and mating dance, are scattered across the landscape. Herds of pronghorn migrate widely across the open country between their summer and winter habitats. A variety of bird species found nowhere else in the world migrate from the southern United States and Mexican grasslands to the short- and mixed-grass prairies of the Northern Great Plains to breed and raise their young.

The National Fish and Wildlife's (NFWF) the Northern Great Plains Program works through public-private partnerships to sustain and improve interconnected grasslands and healthy populations of grassland-obligate species, while fostering sustainable livelihoods and preserving cultural identities.

Major funding partners include the Avangrid Foundation, Noble Energy, Bureau of Land Management, U.S. Fish and Wildlife Service, U.S. Department of Agriculture's Forest Service and U.S. Department of Agriculture's Natural Resources Conservation Service. Since 2016, the program has funded 89 projects for a total investment of \$17.3 million which has been leveraged by more than \$29.7 million for a total on-the-ground impact of \$47 million.

*(continued)*



### CONSERVATION IMPACT

As identified in the Northern Great Plains Business Plan, the program seeks projects that address the following desired outcomes.

#### Demonstrate successful models for grassland habitat conservation that:

- Increase grasslands connectivity through permanent conservation efforts such as conservation easements and grass banking that maintain working ranches and restrict subdivision and sod-busting activities
- Increase grasslands through habitat restoration efforts (reseeding, removal of woody invasives, prescribed fire, etc.)
- Improve management at large scales that facilitates persistent long-term behavioral changes that benefit grasslands and focal species.

#### Improve population levels and related outcomes for grassland species through projects that:

- Identify and address limiting factors for grassland obligate songbirds such as Baird's sparrow, Sprague's pipit, chestnut-collared and McCown's longspurs, and lark buntings

- Promote black-footed ferret conservation through the distribution of sylvatic plague vaccine in targeted prairie dog colonies
- Improve landscape permeability for pronghorn by removing and modifying fence and installing structures to minimize mortality at road crossings and bottleneck sites
- Sustain populations of greater sage-grouse through restoration of meadows and removing or marking fencing around key leks in Sage Grouse Focal Areas

### PROGRAM IMPLEMENTATION

Applications for projects that make investments in focal areas based on partner interests and conservation opportunities will be accepted through annual requests for proposals that will occur in the late summer or early fall. Eligible applicants include nonprofit, tribal and governmental conservation entities in the region. Since 2016, our investments in the Northern Great Plains have restored nearly 100,000 acres, removed or improved 280 miles of fencing to wildlife-friendly specifications, placed more than 414,000 acres under conservation easement and improved management on more than 2.26 million acres of habitat.