



# Papahānaumokuākea Research and Conservation Fund

## NFWF CONTACTS

**Michelle Pico**

Program Director,  
Marine Conservation  
pico@nfwf.org  
262-567-0601

## PARTNER



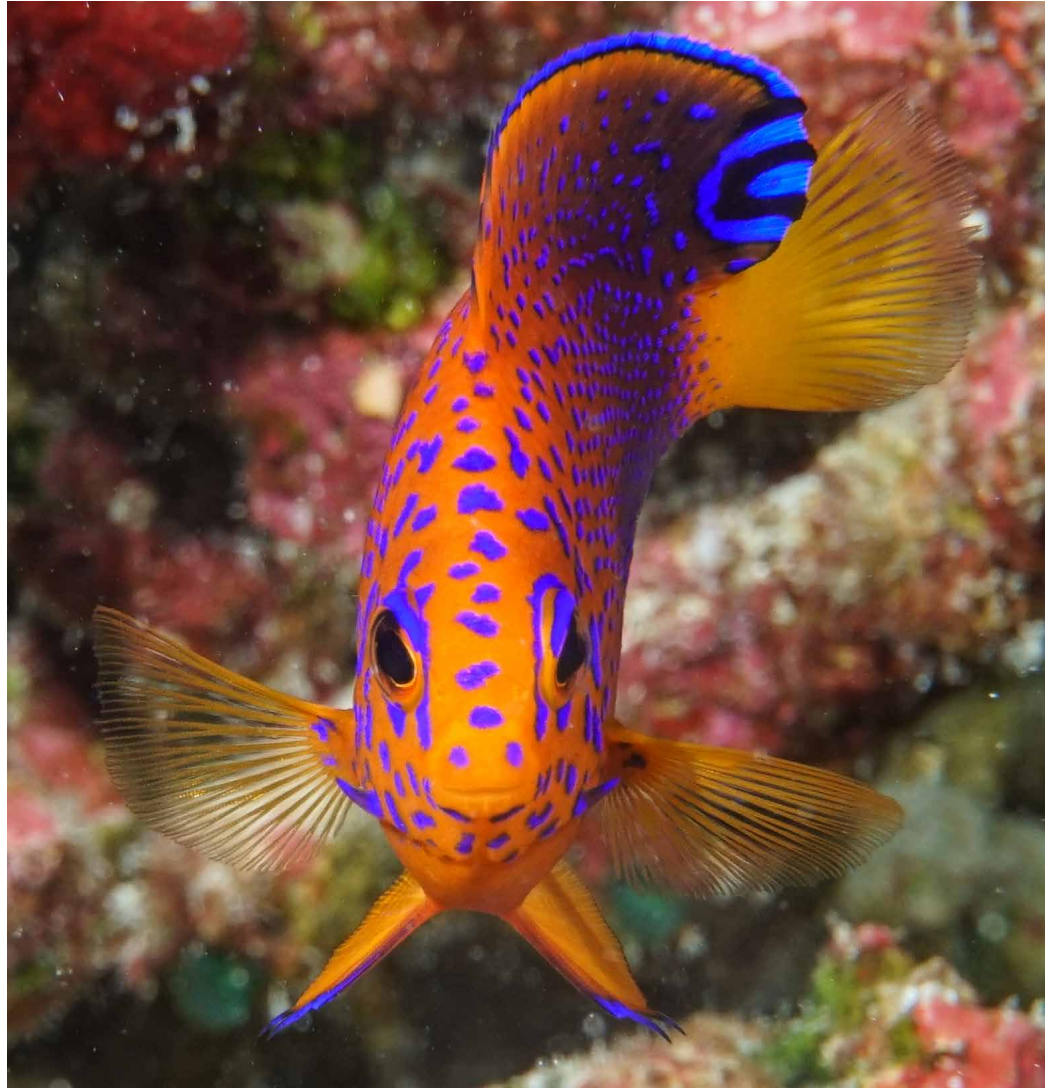
## ABOUT NFWF

Chartered by Congress in 1984, the National Fish and Wildlife Foundation (NFWF) protects and restores the nation's fish, wildlife, plants and habitats. Working with federal, corporate and individual partners, NFWF has funded more than 5,000 organizations and generated a total conservation impact of \$6.1 billion.

Learn more at [www.nfwf.org](http://www.nfwf.org)

## NATIONAL HEADQUARTERS

1133 15th Street, NW  
Suite 1000  
Washington, D.C., 20005  
202-857-0166



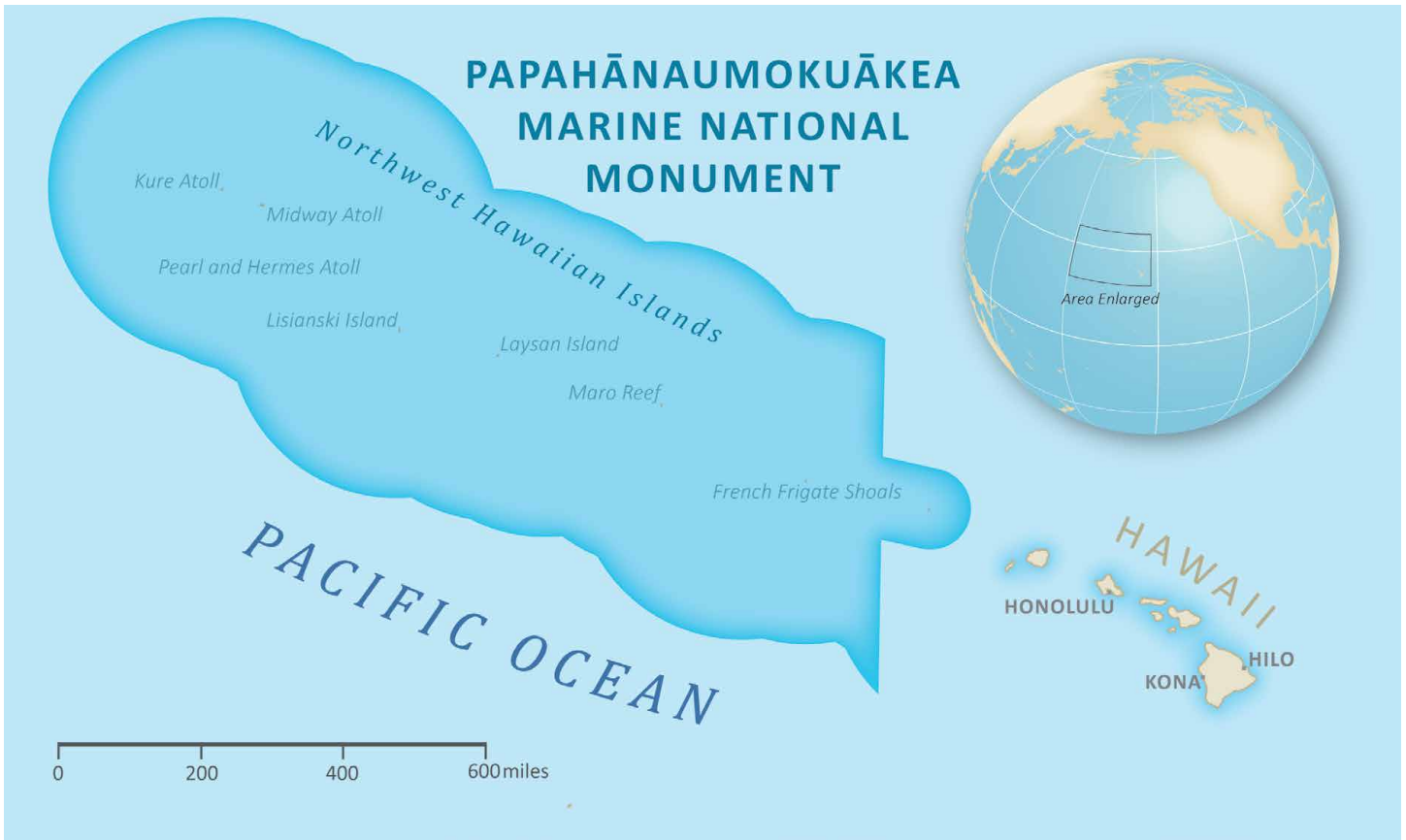
Japanese angelfish | Credit: Andrew Gray, NOAA

## BACKGROUND

The Papahānaumokuākea Research and Conservation Fund (PRCF) seeks to advance the management of the remote island archipelago of the Northwestern Hawaiian Islands with a focus on the interconnectivity of these marine and island systems and their adaptability to environmental stressors. The Papahānaumokuākea Marine National Monument was established in 2006 to protect this geography and is made up of 1,350 miles of coral islands, seamounts, banks and shoals supporting a variety of coral, fish, birds, marine mammals, sea turtles and other flora and fauna, many of which are unique to the Hawaiian Island chain.

In its first three years the PRCF has invested more than \$2.8 million across eight (8) projects, leveraging more than \$3.2 million in support of the Monument's natural resources for a total conservation impact of \$6.0 million. Major funding is provided by NOAA's Office of Marine Sanctuaries.

*(continued)*



### GOALS AND OBJECTIVES

Established in 2018, the Fund focuses on five initial strategies set by a Hawaii-based Advisory Committee to address critical management needs:

- Increase management capacity to respond to potential impacts of predicted environmental stressors
- Understand the role of deep water habitats to the food web and as potential refugia
- Decrease the impacts of marine debris to wildlife and habitat
- Explore new innovations for working in remote environments

- Support shared marine and terrestrial goals across management agencies such as restoration of native species and translocation of species impacted by sea level rise

The Fund's investments are provided to support management across the Monument, however an initial focus has been placed at French Frigate Shoals as a hot spot for endangered wildlife within the Monument and a case study for addressing management challenges and threats that are found throughout its boundaries.



Monk seal and green sea turtles | Credit: Koa Matsuoka



Marine debris at French Frigate Shoals | Credit: Koa Matsuoka