



NFWF

Gulf Environmental Benefit Fund

TEXAS

# Mad Island Marsh Shoreline Protection

This project will strengthen and protect nearly 2 miles of the rapidly eroding banks of the Gulf Intracoastal Waterway within the Mad Island Wildlife Management Area (WMA). Construction of a 9,800-foot riprap breakwater will provide critical protection for nearly 370 acres comprising a freshwater lake, 70 acres of palustrine emergent wetlands, and 250 acres of coastal high marsh and prairie. Additionally, the breakwaters will reduce rates of land loss from erosion and serve as a barrier and buffer from storm surge. Significant progress on the design of this project has been completed, allowing for timely implementation once permitted.

The Mad Island WMA was identified as a natural resource area threatened by erosion in the 2014 version of the Texas Coastwide Erosion Response Plan published by Texas General Lands Office. Additionally, project outcomes are designed to address a portion of moderate and high priority shoreline segments identified by the DU Decision Support Tool for Shoreline Protection along the Texas Gulf Intracoastal Waterway, based on wetland type and rate of shoreline erosion. The proposed work is immediately adjacent to a GEBF-funded project to complete engineering and design for as similar stretch of the Gulf Intracoastal Waterway running through a conservation property owned by The Nature Conservancy.

## AT A GLANCE

**RECIPIENT:**  
Ducks Unlimited (DU)

**AWARD AMOUNT:**  
\$3,041,000

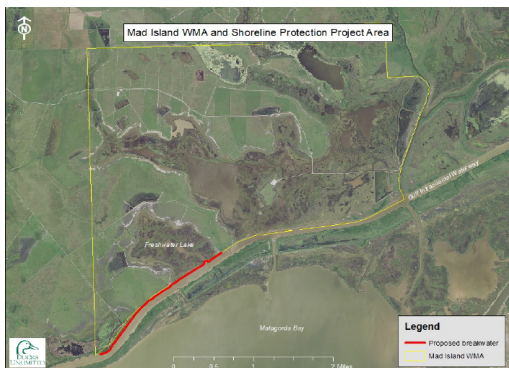
**PARTNERS:**  
Texas Parks and Wildlife Department

**LOCATION:**  
Matagorda County

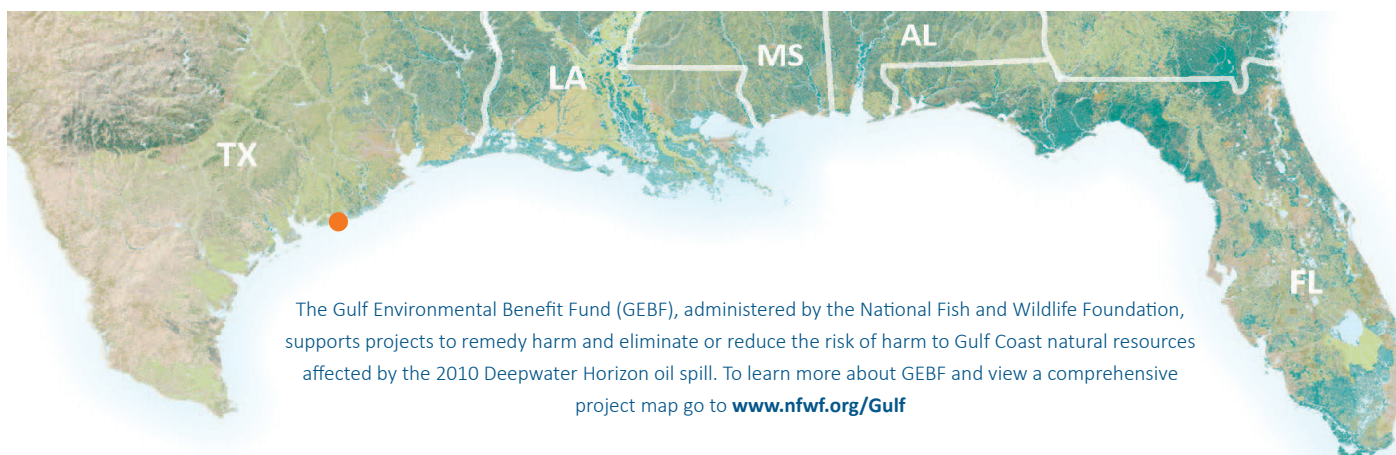
**AWARD DATE:**  
November 2019

**STATUS:**  
Active

**PROGRESS UPDATE:**  
Preparing to obtain permits required for construction.



GEBF funds will be used to protect various bird species along the Gulf Intracoastal Waterway, such as the greater yellowlegs pictured above.



The Gulf Environmental Benefit Fund (GEBF), administered by the National Fish and Wildlife Foundation, supports projects to remedy harm and eliminate or reduce the risk of harm to Gulf Coast natural resources affected by the 2010 Deepwater Horizon oil spill. To learn more about GEBF and view a comprehensive project map go to [www.nfwf.org/Gulf](http://www.nfwf.org/Gulf)