



Emergency Coastal Resilience Fund

NFWF CONTACTS

Jay Jensen

Director,
Southern Regional Office
jay.jensen@nfwf.org
202-595-2650

Suzanne Sessine

Program Director,
Southern Coastal Programs
suzanne.sessine@nfwf.org
202-595-2477

Kate Morgan

Coordinator,
Water Investments
katherine.morgan@nfwf.org
202-595-2469

FUNDING PARTNER



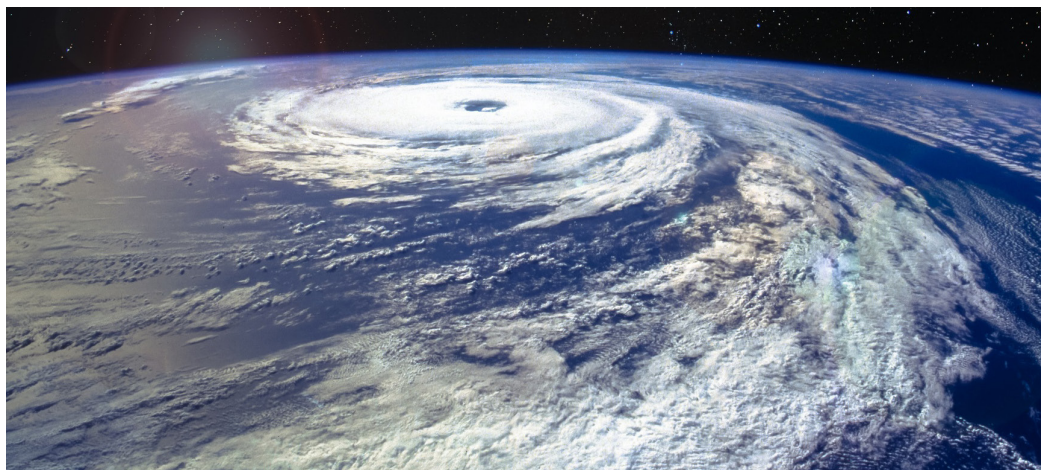
ABOUT NFWF

The National Fish and Wildlife Foundation (NFWF) protects and restores our nation's fish and wildlife and their habitats. Created by Congress in 1984, NFWF directs public conservation dollars to the most pressing environmental needs and matches those investments with private funds.

Learn more at www.nfwf.org

NATIONAL HEADQUARTERS

1133 15th Street, NW
Suite 1000
Washington, DC 20005
202-857-0166



Hurricane Florence as it approached the United States in 2018

BACKGROUND

The Emergency Coastal Resilience Fund (ECRF) is a partnership between the National Fish and Wildlife Foundation and the National Oceanic and Atmospheric Administration that supports projects that build resilience for coastal communities impacted by natural disasters in 2018. The fund targets coastal communities within counties that received a federal disaster declaration in Alabama, California, Florida, Georgia, North Carolina, South Carolina, Virginia and the Commonwealth of the Northern Mariana Islands, as a result of the impacts of hurricanes Michael and Florence, Typhoon Yutu and catastrophic wildfires. As coastal communities work to rebuild following the devastation caused by these disaster events, the new fund provided needed funding for projects that protect community assets and restore critical habitats for fish and wildlife.

In 2020, the Emergency Coastal Resilience Fund awarded \$48.5 million to 27 coastal resilience projects that will benefit the communities impacted by the events.

GOALS AND OBJECTIVES

ECRF was established to support natural and nature-based projects in impacted areas to provide dual benefits:

- Benefit coastal communities by reducing the impact of future storms and associated natural hazards (e.g. coastal storm surge, sea-level rise, wave velocity, flooding, debris flow, stormwater runoff) to properties, community infrastructure such as schools and municipal buildings, assets of economic importance, and health and safety assets such as hospitals, evacuation routes, utilities, and fire and rescue response
- Benefit fish and wildlife by enhancing the ecological integrity and functionality of coastal ecosystems

To address the varying state of readiness of the impacted coastal communities, ECRF solicited two types of projects: 1) on-the-ground implementation projects, and 2) project development support to help overcome barriers to getting to a shovel-ready implementation project. Example projects include living shorelines and restoration of wetland, dune, coastal forest, floodplain and coral reef habitat. In total, projects supported by ECRF are expected to protect or enhance more than 20 miles of shoreline and nearly 8,000 acres of wildlife habitat.