



# Central Appalachia Habitat Stewardship Program

*Applicant Webinar, May 13, 2021*



# AGENDA

**1:30 PM – 3:00 PM**

- 1. NFWF Roles**
- 2. About NFWF**
- 3. Overview of Program and Process**
- 4. Review of 2021 RFP**
- 5. Metrics**
- 6. Calculating Indirect Costs and Budgeting Best Practices**
- 7. Using EasyGrants**
- 8. Tour of Central Apps Online Portal**
- 9. Final Questions**



# NFWF Roles



**Amanda Bassow**, Director,  
Northeastern Regional Office



**John Lamoreux**, Director, Fish  
and Wildlife Conservation



**John Wright**, Manager,  
Northeastern Regional Office



**Scott Hall**, Senior Scientist,  
Bird Conservation



**Katie Ombalski**, Field Liaison  
Woods and Waters Consulting



# About Us

## Who We Are

- Chartered by Congress in 1984
- 30 member Board appointed by Secretary of the Interior,
  - Includes FWS Director and NOAA Administrator

## What We Do

- Sustain, restore and enhance wildlife
- Bring collaboration among federal agencies and private sector

## How We Do It

- Leverage public funding with private money – average 3:1



*Bald eagle*

## NFWF is

- An implementer – we fund projects

## NFWF is not

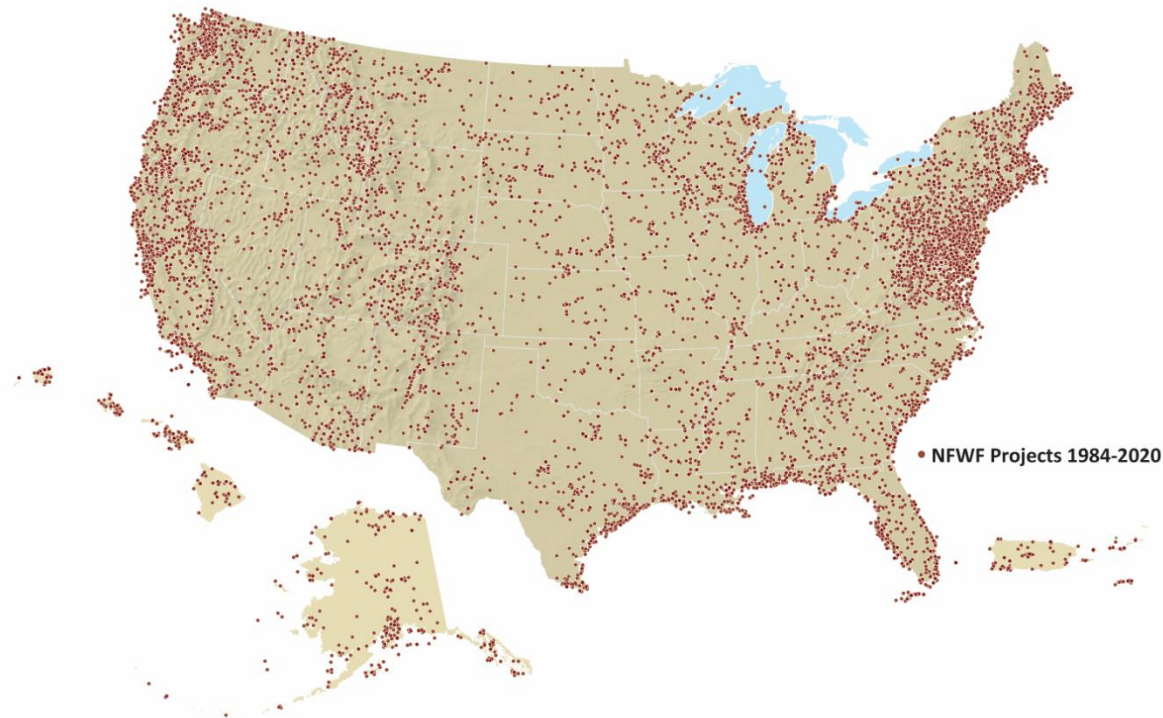
- An advocacy organization that engages in lobbying or litigation



# NFWF Conservation Investments (1984 – 2020)

## Overview of NFWF Funds Invested

	FY 2019	FY 2020	FY 1984 – FY 2020
Federal Funds	\$ 141.0 million	\$ 212.1 million	\$ 1.62 billion
Non-Federal Funds	\$ 366.0 million	\$ 186.4 million	\$ 2.24 billion
Grantee Matching Funds	\$ 245.0 million	\$ 303.1 million	\$ 2.97 billion
<b>Total Funds Invested</b>	<b>\$ 752.0 million</b>	<b>\$ 701.6 million</b>	<b>\$ 6.83 billion</b>
<b># of Projects Awarded</b>	<b>931</b>	<b>953</b>	<b>19,764</b>



- \$398.5 million awarded to 953 projects in 2020
- More than \$3.86 billion awarded since 1984
- 19,764 Investments
- 5,000 organizations
- All 50+ states



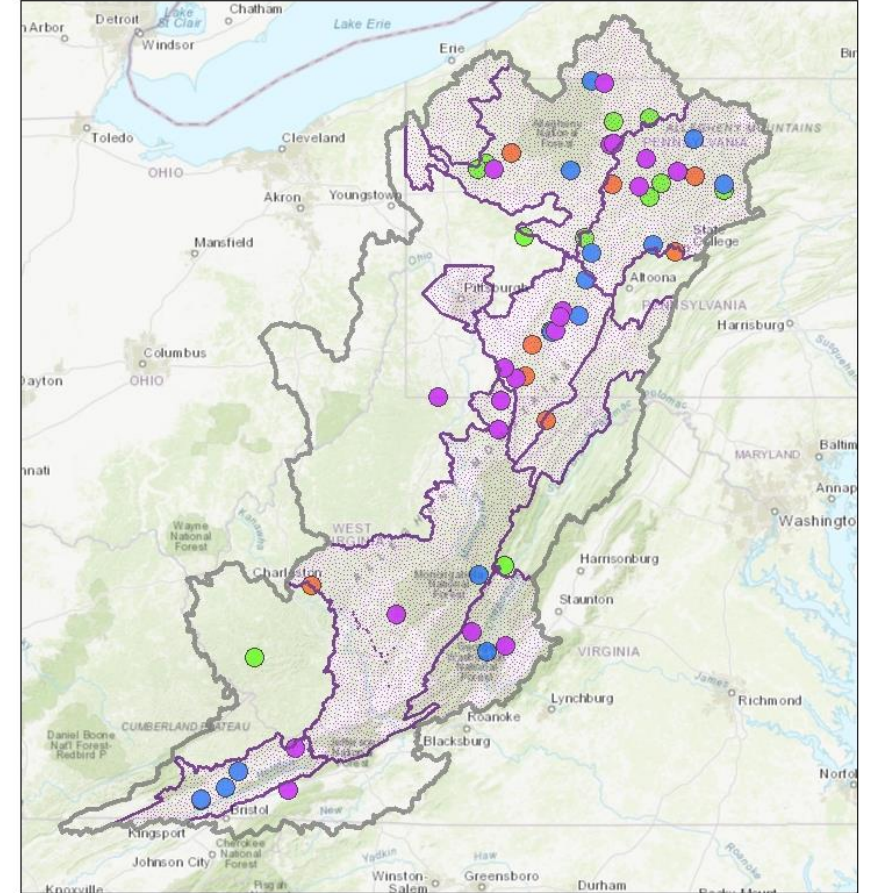


# Central Appalachia Habitat Stewardship Program

Launched in 2017

Accomplishments to date include...

- \$6.5 M awarded to 47 projects throughout region
- Improving habitat on **250K acres of forest**
- Removing 29 barriers, opening **214 miles of upstream habitat**
- Restoring **25 miles of streamside forest**



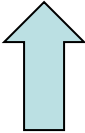
American Forest Foundation





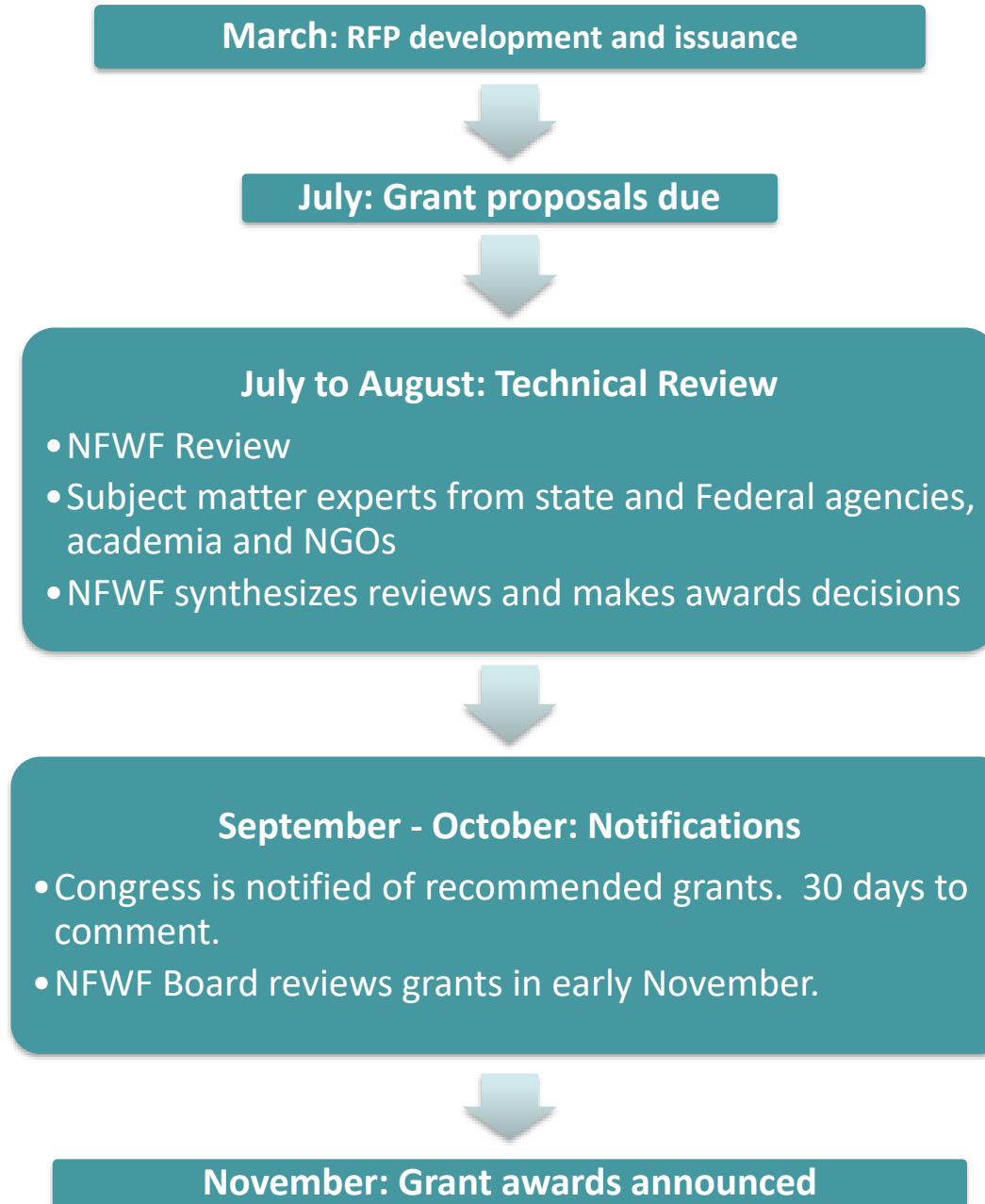
**National Fish and Wildlife Foundation**  
Central Appalachia Business Plan

March 2019

- In March 2019 NFWF's board approved the Central Appalachia Business Plan
- In November 2020 revised goals 
- Plan guides NFWF investments in the region through 2029, in order to
  - ✓ improve the quality and connectivity of forest and freshwater habitat
  - ✓ increase the distribution and abundance of native fish, birds and other wildlife

[www.nfwf.org/central-appalachia-habitat-stewardship-program](http://www.nfwf.org/central-appalachia-habitat-stewardship-program)

# Application, Review and Award Process



NFWF



# 2021 Request for Proposals

Applicant Webinar: Thurs, May 13th  
**Proposals Due: Thursday, July 15th**  
Review and Notification: July – October  
Awards Announced: Mid-November

Grant Implementation: 2 to 3 years

Award Amount: \$50k to \$200k each  
Match: 1:1 non-federal match **encouraged**  
Grants: anticipate awarding 10-12



# REVIEW OF REQUEST FOR PROPOSALS

- **Geographic Focus**
- **Program Priorities**
- **Metrics**
- **Eligibility**
- **Funding Availability and Match**
- **Evaluation Criteria**
- **Compliance**



# Geographic Focus

- Projects within the green boundary are eligible
- Priority will be given to projects within the brown “focal geographies”
- Changes from 2020: Shenango, Allegheny Co. and Southern Allegheny Front (other minor adjustments)
- Links in RFP to interactive map and business plan portal with downloadable shape file of boundaries





# Program Priorities

1. Restore and Manage Forest Blocks in Focal Geographies
2. Target Outreach and Assistance to Key Forest Landowners and Practitioners
3. Sustain and Improve High Integrity Habitat for Eastern Brook Trout
4. Restore Eastern Hellbender and Freshwater Mussel Habitat and Increase Occupancy



NFWF



# Priority 1: Restore and Manage Forest Blocks

- Create a mosaic of mixed-aged forests that support a diversity of bird and wildlife species
- Use a range of practices and prescriptions to create a diversity of age and structure across contiguous forest blocks of at least 5,000 acres
- Implement management activities in established blocks within focal geographies (see map)
- Develop dynamic forest block plans for new forest blocks
- Demonstrate restoration response monitoring

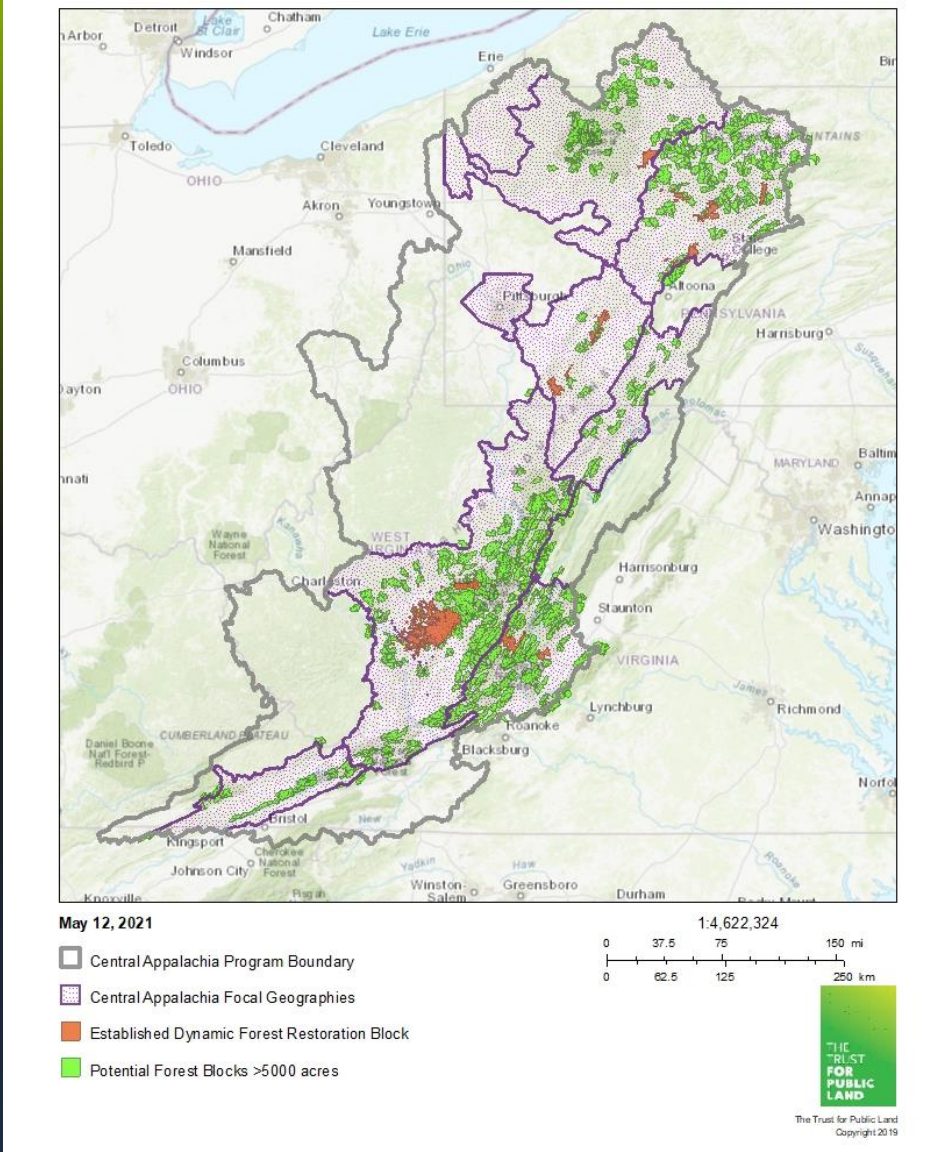
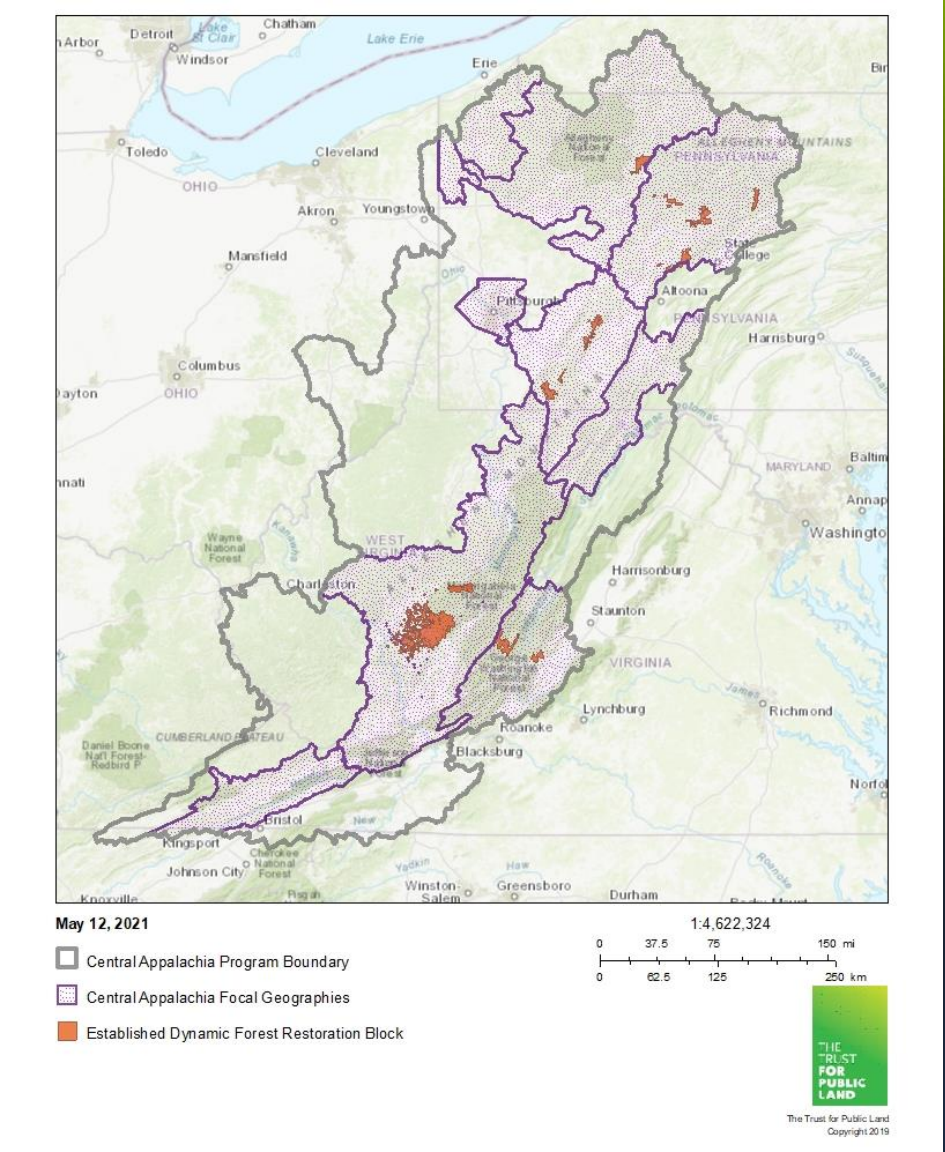


## Priority 2: Target Outreach and Assistance to Forest Landowners and Practitioners

- Outreach: Engage private forestland owners adjacent to or in close proximity to established dynamic forest blocks (see map!)
- T.A.: More consulting foresters qualified to write forest management plans that focus on habitat condition
- Demonstration projects



# Established and Potential Dynamic Forest Blocks





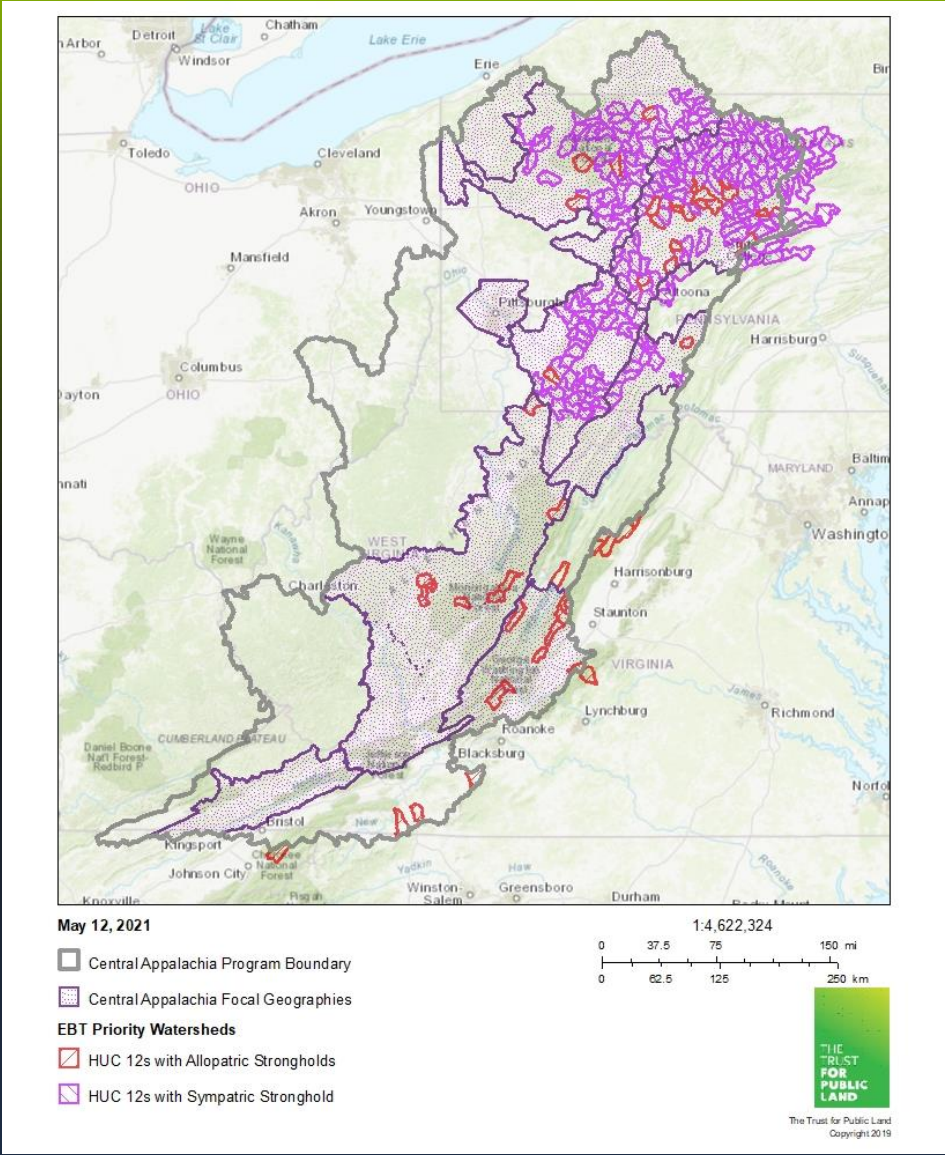
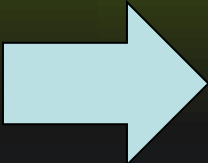
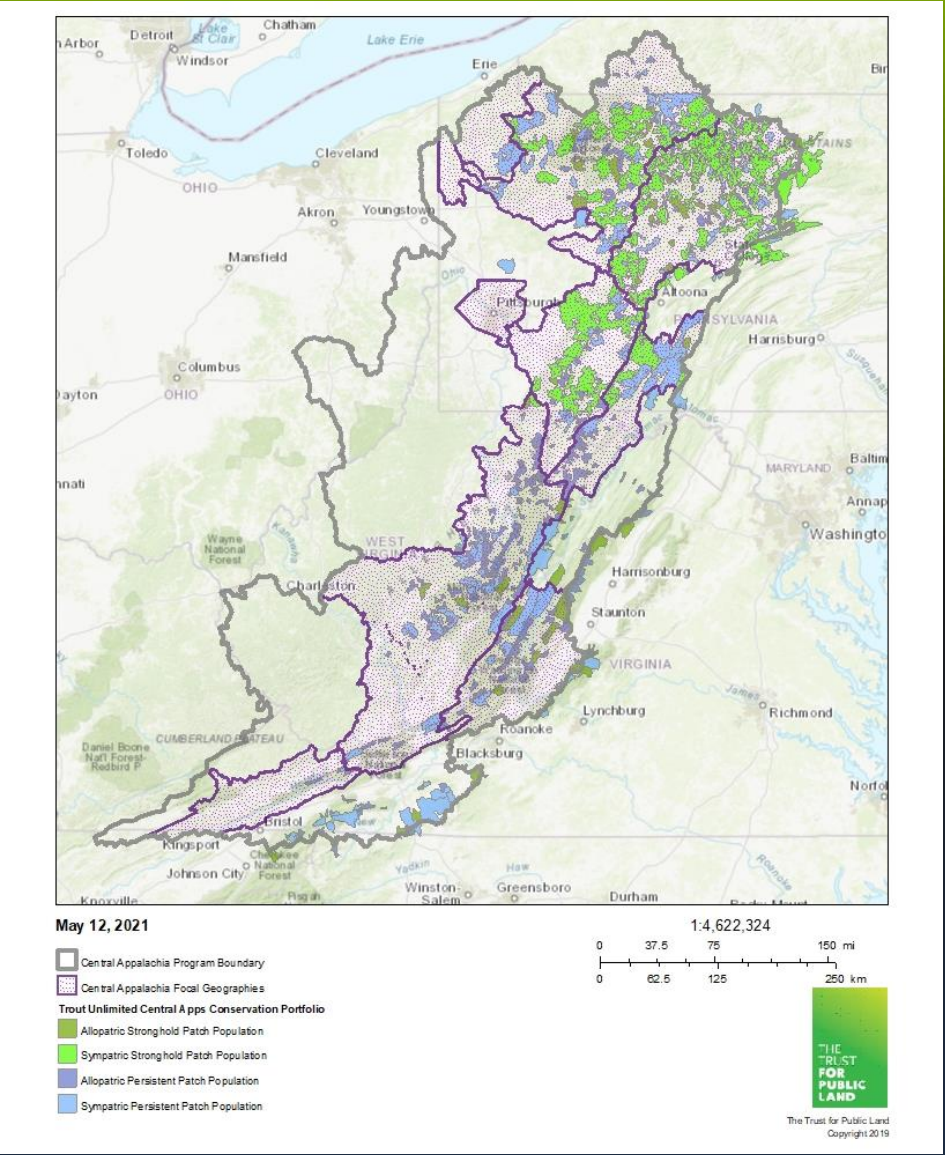
An underwater photograph of two brook trout swimming in a stream. The water is clear, and the bottom is covered with dark rocks. Above the water, a dense layer of autumn leaves in shades of yellow, orange, and brown is visible, along with some thin tree branches. The trout have dark green bodies with numerous yellow and orange spots. Their fins are a reddish-brown color.

## Priority 3: Sustain and Improve Habitat for Brook Trout

- Patch assessments of stronghold populations
- Restore connectivity within HUC12s that have stronghold populations
- Restore riparian forests within HUC 12s that have stronghold populations
- Increase forest cover on abandoned mine lands within HUC 12s...
- Improve conservation on ag lands ... (you guessed it)
- Reduce erosion and sedimentation from dirt and gravel roads upstream of brook trout populations



# Targeting Watersheds with “Stronghold” EBT Populations





## Priority 4: Restore Hellbender and Mussel Habitat and Increase Occupancy

- Improve habitat (ag BMPs, buffers, AOP)
- Enhance hellbender nesting habitat
- Develop regional mussel conservation framework and plan
- Mussel reintroductions



## Metrics: Restore and Manage Forest Blocks

Assessment/ Planning	Tool development for decision-making - # tools developed
Forest Block Restoration	Forest Management Planning - # of acres covered by dynamic forest plans
	<b>YOUNG FOREST:</b> Golden-Winged Warbler - Improved management practices - Acres under improved management
	<b>MATURE FOREST:</b> Wood Thrush - Improved management practices - Acres under improved management
	<b>LATE SUCCESSIONAL FOREST:</b> Cerulean Warbler - Improved management practices - Acres under improved management
	Central Apps - Monitoring - Acres being monitored
Species Outcomes	Central Apps - Cerulean Warbler - Population - # sites occupied by species
	Central Apps - Wood Thrush - Population - # sites occupied by species
	Central Apps - Golden-Winged Warbler - Population - # sites occupied by species

## Metrics: Outreach and TA to Forest Owners and Practitioners

Outreach and Technical Assistance	Outreach/ Education/ Technical Assistance - # people reached by outreach, training, or technical assistance activities
	Outreach/ Education/ Technical Assistance - # of people demonstrating a minimum level of behavior change
Landowner Demonstration Projects	Golden-Winged Warbler - Improved management practices - Acres under improved management
	Wood Thrush - Improved management practices - Acres under improved management
	Cerulean Warbler - Improved management practices - Acres under improved management
	Outreach/ Education/ Technical Assistance - Conservation demonstration sites



## Metrics: Sustain and Improve Habitat for EBT

Patch Assessments	Research - # of sites assessed
Monitoring	Monitoring - # sites being monitored
Restore Aquatic Connectivity	Fish passage improvements - # passage barriers rectified
	Fish passage improvements - Miles of stream opened
Restore Riparian Forests	Riparian restoration - Miles restored
Improve Conservation on Agricultural Lands	BMP implementation for nutrient or sediment reduction - Acres with BMPs to reduce nutrient or sediment loads
Improve Conservation on Agricultural Lands	BMP implementation for livestock fencing - Miles of fencing
	Floodplain restoration – Acres restored
	Wetland restoration - Acres restored
Restore Aquatic Habitat	Instream habitat restoration - Miles restored
Dirt and Gravel Roads	BMP implementation for road improvements - Miles of road improved
Eastern Brook Trout Outcome	Central Apps - Habitat Quality - # of habitat units (patches) improved

## Metrics: Hellbender, Mussels, Etc.

Ag BMPs, Buffers, AOP	<i>Use same metrics for EBT habitat restoration</i>
Re-establish Hellbender Occupancy and Improve Habitat*	Nesting Sites - # nesting sites installed
	Hellbender - Population - Miles of habitat occupied
Re-establish Freshwater Mussel Occupancy and Improve Habitat*	Captive breeding/ rearing/ rehab facilities - # individuals released
Land Protection	Conservation easements - Acres protected under long- term easement (permanent or > 30-yr)
Tree Planting	# of trees planted
Mineland Reforestation	Land Restoration – acres restored
Volunteers	Volunteer participation - # volunteers participating in projects

# Eligibility and Match

## Eligible and Ineligible Entities

- Eligible: non-profit 501(c) organizations, state government agencies, local governments, municipal governments, Indian tribes and educational institutions
- Ineligible: Federal government agencies, businesses, unincorporated individuals and international organizations

## Ineligible Uses of Grant Funds

- Political advocacy, fundraising, lobbying, litigation, terrorist activities or Foreign Corrupt Practices Act violations
- Efforts to comply with legal requirements, including permit conditions, mitigation and settlement agreements

## Funding Availability and Match

- Grant size: \$50k - \$200k
- Strongly ***encourage*** non-federal match of 1:1



# Evaluation Criteria

- ✓ Program Goals and Priorities
- ✓ Technical Merit and Work Plan
- ✓ Cost-Effectiveness
- ✓ Monitoring
- ✓ Long-term Sustainability





# Compliance

- ✓ 2021 funding is a mix of federal and non-federal sources, so federal requirements for budget, procurement, match all apply
- ✓ Grantees receiving USFWS funds will need to comply with NEPA, ESA, NHPA
- ✓ Grantees will not know until after awards are announced if they are receiving USFWS funds
- ✓ It's best to assume you will need to comply
- ✓ You may review NEPA, ESA and NHPA templates on the program page in order to plan time and resources accordingly

# Easygrants Tips

[easygrants.nfwf.org](http://easygrants.nfwf.org)

1. Log in with an existing email and password. **Or** create an account **now**. If you have trouble logging in, use the help feature.
2. Turn off your pop-up blockers.
3. Download and use the **tip sheet** available on the program webpage.
4. You can work on the narrative offline.
5. With the mapping feature – please be as specific as possible AND provide narrative location information on your project.
6. Click save frequently. Do not click **SUBMIT** until all sections are complete  
Make sure all your check marks on the Review and Submit page are green.



# Like the Maps?


The screenshot shows a web browser window with the URL [web.tplgis.org/nfwf\\_centralapps/](https://web.tplgis.org/nfwf_centralapps/). The page features a header with the 'THE TRUST FOR PUBLIC LAND' logo, the text 'PLANNING AND GIS', a search bar, and links for 'PROJECTS' and 'CONTACT'. The main content area is titled 'NFWF CENTRAL APPALACHIAN BUSINESS PLAN' and contains three interactive cards: 'HUC 12 Project Assessment Tool' (with a map icon), 'Data Description' (with a database icon), and 'Central Appalachia program boundary and focal geographies GIS Data Download' (with a star icon). Each card includes a brief description of its function. At the bottom of the main content area is an 'Overview' link. The browser's taskbar at the bottom shows various application icons and the system clock indicating 4:34 PM on 5/12/2021.

NFWF Central Appalachian Business Plan


PLANNING AND GIS

Search ... SEARCH PROJECTS CONTACT


## NFWF CENTRAL APPALACHIAN BUSINESS PLAN



**HUC 12 Project Assessment Tool**  
Explore the Decision-Support Tool



**Data Description**  
Learn about the data used for the Open Space Vision Analysis



**Central Appalachia program boundary and focal geographies GIS Data Download**  
Download the GIS Data showing the NFWF Central Appalachian Business Plan Program and Focal Geography Boundaries (Updated 2021)

Overview

[https://web.tplgis.org/nfwf\\_centralapps/](https://web.tplgis.org/nfwf_centralapps/)

## Final Tips for Applicants

1. Re-read the **RFP** and reference the information provided through the links. Call us if you're confused.
2. These are competitive grants. Projects should address all criteria and have a “**wow**” factor.
3. Include lots of context and details—**don't assume** we know your plan, partnership or watershed.
4. Be strategic first, opportunistic second.
5. Submit your proposal **ON OR BEFORE** July 15th.
6. Note that NFWF staff will not be “in the office” at 11:59 pm on July 15th!



# For Questions and Assistance

**John Wright**, Manager

Northeastern Regional Office, NFWF

[John.Wright@nfwf.org](mailto:John.Wright@nfwf.org)

(202) 595-2478

**Amanda Bassow**, Director

Northeastern Regional Office, NFWF

[Amanda.Bassow@nfwf.org](mailto:Amanda.Bassow@nfwf.org)

(202) 412-5023

**Katie Ombalski**, Principal | Conservation Biologist

Woods and Waters Consulting

[Katie@woodswaters.com](mailto:Katie@woodswaters.com)

(814) 574-7281

<https://www.nfwf.org/centralapps>



NFWF





Questions?

Proposals are Due  
*Thursday, July 15, 2021* by  
11:59 PM Eastern Time  
Awards will be announced  
in mid-November