



NFWF

Gulf Environmental Benefit Fund

TEXAS

# Carancahua Bay Habitat Preservation and Enhancement- Phase II

This project will complete engineering, design and construction of a 2 mile living shoreline to protect and restore the mouth of Carancahua Bay in Calhoun County. This investment will directly protect over 1,000 acres of salt marsh, oysters, seagrass, and shallow water habitat complex, as well as up to 75% of intertidal salt marsh within the Salt and Redfish Lake areas of the bay (624 acres). Further, this project will restore the natural salinity regime across the lower portion of Carancahua Bay, re-establishing the conditions that allow estuarine species and habitats to thrive.

The construction of protective living shoreline structures along the eastern portion of Salt Lake and along the eastern and southern portions of Redfish Lake will protect the marshes, oysters, and sea grass beds within the two lakes. It will also help to re-establish the natural salinity regimes within Carancahua Bay, which has been adversely affected by the erosion of the shorelines at the mouth of the Bay resulting in greater wave energy and higher salinity water intrusion from Matagorda Bay.

AT A GLANCE

**RECIPIENT:**  
Texas General Land Office

**AWARD AMOUNT:**  
\$6,100,000

**PARTNERS:**  
U.S. Fish and Wildlife Service

**LOCATION:**  
Calhoun County

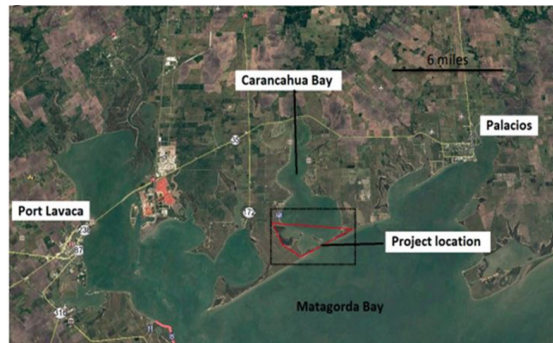
**AWARD DATE:**  
November 2020

**STATUS:**  
Active

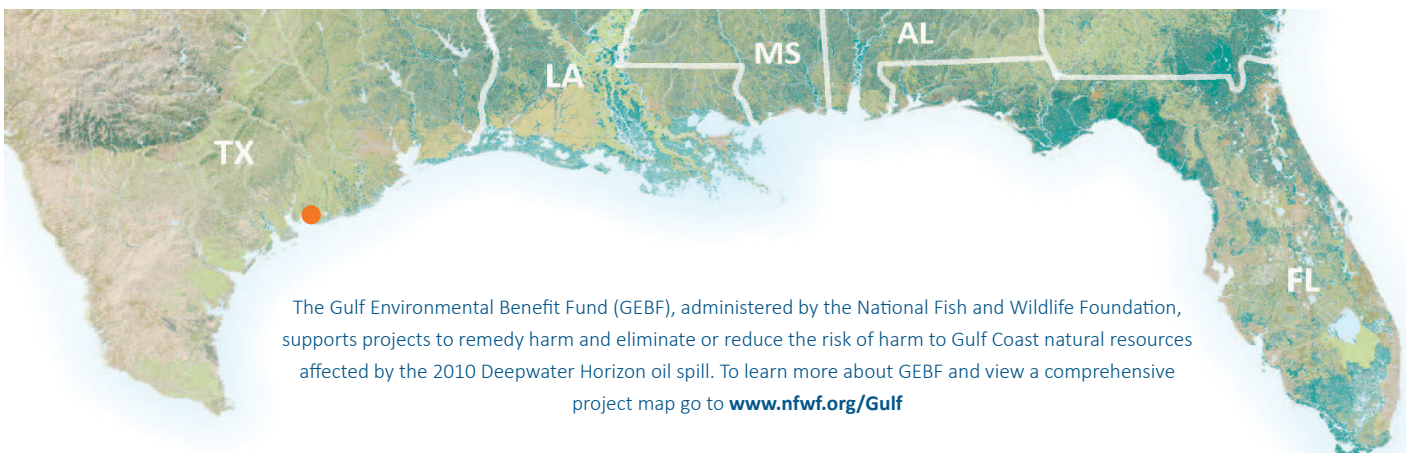
**PROGRESS UPDATE:**  
Construction is scheduled to start in FY23.



Credit | Matt Winter



This project will protect wetland habitat like the above left picture. Above right picture shows a map of the project location and surrounding areas.



The Gulf Environmental Benefit Fund (GEBF), administered by the National Fish and Wildlife Foundation, supports projects to remedy harm and eliminate or reduce the risk of harm to Gulf Coast natural resources affected by the 2010 Deepwater Horizon oil spill. To learn more about GEBF and view a comprehensive project map go to [www.nfwf.org/Gulf](http://www.nfwf.org/Gulf)