



NFWF

Gulf Environmental Benefit Fund

MISSISSIPPI

Inshore Artificial Reef Assessment and Petit Bois Reef Planning - Phase I

The Mississippi Department of Marine Resources (MDMR) currently manages 63 inshore reefs in the Mississippi Sound. The reefs are comprised of several different types of material including crushed concrete, limestone, and oyster shell. These artificial reefs provide both vertical relief and hard substrate for a variety of fishes and invertebrates. The objective of this project is to provide MDMR with structural and ecological information regarding the current condition of these inshore reefs and to document species utilization. This information is then expected to inform a significant request to enhance and refurbish these reefs to ensure they optimize fish productivity across the Mississippi Sound.

Additionally, this project will include permitting for a new 15-acre artificial reef zone north of Petit Bois Island and the development of a monitoring and adaptive management plan for all GEBF-funded artificial reefs managed by MDMR. This work is particularly important as a means of improving habitats for the Mississippi Sound's inshore reef fishes, which were impacted by freshwater discharge in recent years.

AT A GLANCE

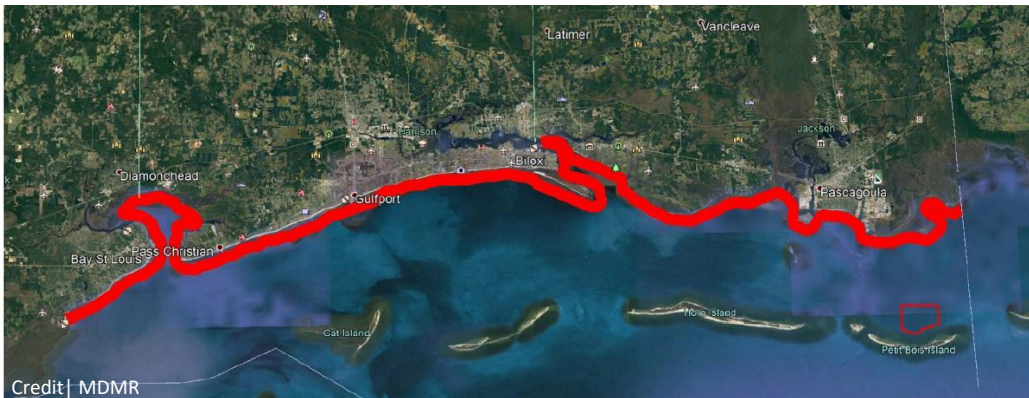
RECIPIENT: Mississippi Department of Marine Resources (MDMR)

AWARD AMOUNT: \$662,000

LOCATION: Mississippi Sound

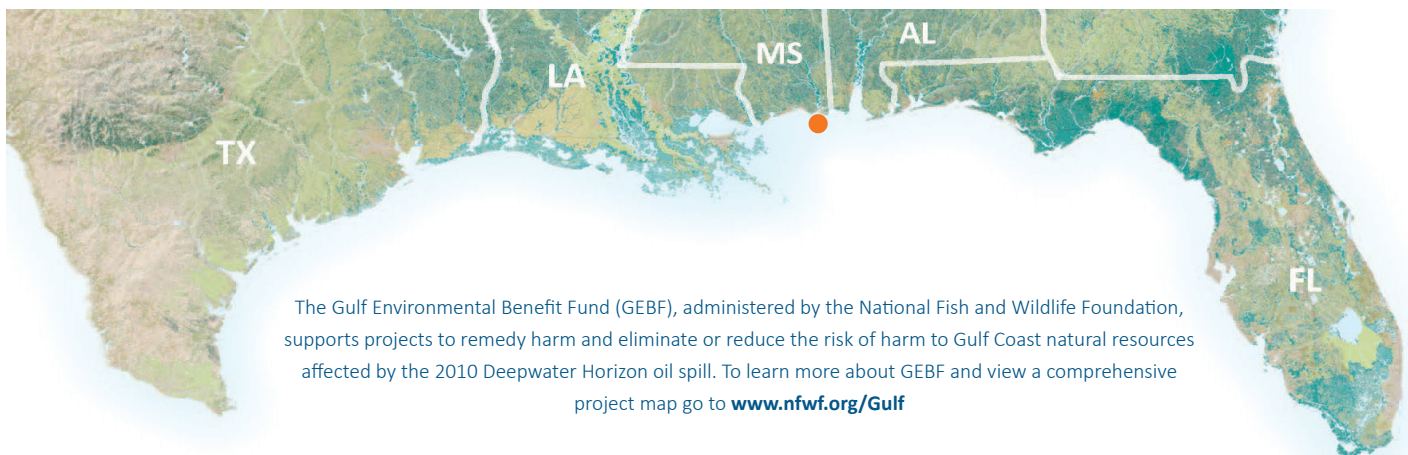
AWARD DATE: November 2021

STATUS: Awarded



Credit | MDMR

MDMR would perform reef assessments along the Mississippi Coast outlined in red above with outlines of the Petit Bois Island reef planning.



The Gulf Environmental Benefit Fund (GEBF), administered by the National Fish and Wildlife Foundation, supports projects to remedy harm and eliminate or reduce the risk of harm to Gulf Coast natural resources affected by the 2010 Deepwater Horizon oil spill. To learn more about GEBF and view a comprehensive project map go to www.nfwf.org/Gulf