



## **CENTRAL APPALACHIA HABITAT STEWARDSHIP PROGRAM**

### **2022 REQUEST FOR PROPOSALS**

Full Proposal Due Date: **Thursday, July 14, 2022 by 11:59 PM EDT**

Applicant Webinar: **Wednesday, June 1, 2022 1:30 PM – 3:00 PM EDT** [Register Here](#)

### **OVERVIEW**

The Central Appalachia Habitat Stewardship Program will award grants to restore and sustain healthy forests, rivers and streams that provide habitat for diverse native bird and aquatic species populations. Approximately \$3 million is available this year. Major funding is provided by the Bezos Earth Fund, the Richard King Mellon Foundation, U.S. Department of Agriculture's Natural Resources Conservation Service (NRCS), the U.S. Forest Service and the U.S. Fish and Wildlife Service.

The overall goal of the program is to improve the quality and connectivity of forest and freshwater habitat in order to increase the distribution and abundance of birds, fish and other wildlife, as evidenced by a suite of species that collectively are indicators of forest and freshwater habitat condition. The program aims to:

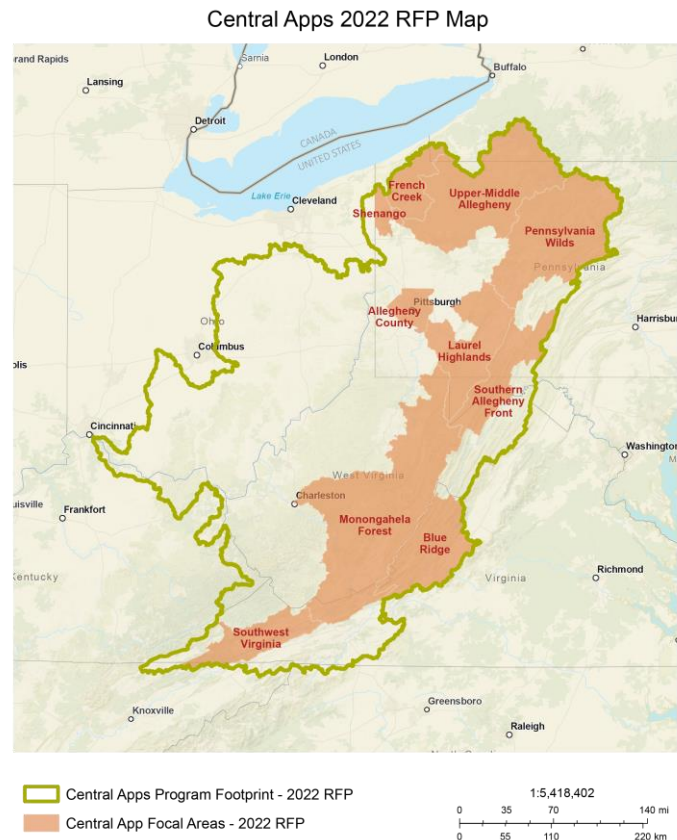
- Improve the management of public and private forestlands in order to create blocks with a mosaic of mixed-aged forests that support a diversity of bird and wildlife species, especially targeting golden-winged warbler, wood thrush, and cerulean warbler; and
- Improve stream health by removing passage barriers, restoring riparian buffers, and improving water quality and hydrology to bolster populations of eastern brook trout, eastern hellbender and native freshwater mussels.

Applicants are encouraged to deploy a range of strategies to engage public and private landowners in active stewardship through technical and financial assistance, demonstrations, education and outreach, and other innovative approaches.

### **GEOGRAPHIC FOCUS**

The Central Appalachia Habitat Stewardship Program will award grants in portions of the Appalachian region of Maryland, New York, Pennsylvania, Ohio, Virginia, and West Virginia. Priority will be given to projects within ten focal geographies (see map below). These geographies were selected by analyzing large watersheds with priority forest and freshwater habitat for target species, with a goal of sustaining and improving large, contiguous blocks of the highest quality habitat. The ten focal geographies are listed below along with the [HUC8 watersheds](#) that comprise them.

- **French Creek** – French Creek watershed
- **Shenango** – Shenango watershed
- **Upper-Middle Allegheny** – Upper Allegheny, Middle Allegheny-Tionesta and Clarion watersheds
- **Pennsylvania Wilds** – Pine, Middle West Branch Susquehanna, Bald Eagle, Sinnemahoning and Upper West Branch Susquehanna watersheds
- **Laurel Highlands** – Conemaugh, Youghiogheny, and Kiskiminetas watersheds
- **Allegheny County, Pennsylvania**
- **Southern Allegheny Front** – North Branch Potomac and Raystown
- **Monongahela Forest** – Cheat, Tygart Valley, Elk, Gauley, Greenbrier, Lower and Middle New watersheds
- **Blue Ridge** – Maury and Upper James watersheds
- **Southwestern Virginia** – Upper Clinch and North Fork Holston watersheds



View an interactive version of the map, [here](#). For more detailed information about priority habitats and partner priorities, visit NFWF’s [Central Appalachia Business Plan GIS Portal](#). Of particular interest, view the NRCS Working Lands for Wildlife priority areas.

## PROGRAM PRIORITIES

All proposals should strive to implement strategies and contribute to goals detailed in NFWF’s [Central Appalachia Business Plan](#) (March 2019. Revised February 2021). Priority strategies for funding in 2022 are detailed below.

### 1. Restore and Manage Forest Blocks in Focal Geographies

NFWF will invest in the management of dynamic forest restoration blocks to enhance age and structural diversity that demonstrates improved forest conditions for golden-winged warbler, wood thrush, and cerulean warbler. **Focal geographies:** continued implementation of forest management activities in established dynamic forest restoration blocks in the *Upper-Middle Allegheny*, *Pennsylvania Wilds*, *Laurel Highlands*, *Monongahela Forest*, and *Blue Ridge Mountains* as well as establishment of new dynamic forest blocks. In addition, projects that

occur within the NRCS Working Lands for Wildlife priority areas are strongly encouraged (refer to [NFWF's Central Appalachia Business Plan GIS Portal](#)).

- **Assessment/Planning:** Provide forest management decision support tools that encourage landscape-level planning to manage for an appropriate mix of age and structural diversity that also is adaptable to meeting the needs and interests of public and private landowners at the parcel and forest block scale. Forest management plans for private lands should be written by foresters qualified to write plans for NRCS producers.
- **Dynamic Forest Block Restoration:** Implement forest management projects that use a range of practices and prescriptions to create a diversity of age and structure across contiguous forest blocks of at least 5,000 acres. Projects that engage landowners with a range of property sizes and interests are strongly encouraged.
- **Restoration Response Monitoring:** Deploy scalable, cost-effective monitoring tools and strategies to measure species population response to habitat restoration. Applicants are strongly encouraged to coordinate with existing partners on sampling, data collection techniques, and analysis to avoid redundancy and increase effectiveness.

## 2. Forest and Grassland Management for Wildlife, Carbon, and Water

NFWF will invest in strategies to accelerate adoption of forest management that maximizes forest health and wildlife benefits while improving carbon storage, water quality and other ecosystem services. Projects that improve private landowner outreach, build capacity to deliver forestry services, and address barriers to afforestation, reforestation and forest management are encouraged. **Focal geographies:** These strategies may be implemented in any focal geography, as well as the larger central Appalachia program boundary.

- **Outreach:** Execute innovative outreach and marketing strategies to engage target audiences (e.g., family woodland owners, municipalities, consulting foresters, loggers) in adopting forest management practices that enhance habitat conditions, with a focus on private forestlands that are adjacent to or in close proximity to established dynamic forest restoration blocks<sup>1</sup>, dynamic forest blocks that are under development, and/or other state or federal forestlands. Proposals should clearly describe how relationships with willing landowners will be managed, and by whom, in order to ensure landowners receive ongoing support for project planning, financing, and transition to on-the-ground implementation. Projects are encouraged to implement strategies that engage underserved and socially disadvantaged landowners.<sup>2</sup>

---

<sup>1</sup> Established and developing dynamic forest blocks are areas where prior NFWF grants have supported landscape-level planning to inform management to achieve an appropriate mix of age and structural diversity that meets the needs of landowners and wildlife at the parcel and forest block scale.

<sup>2</sup> A landowner who is a member of one or more of the following groups whose members have been subjected to racial or ethnic prejudice because of their identity as members of a group without regard to their individual qualities, 7 U.S.C. § 2279(e). Groups include, but are not limited to: African Americans, American Indians, Alaskan Natives, Asians, Hispanics, Pacific Islanders, Refugees and Immigrants belonging to any of the groups named above.

- **Technical Assistance:** Increase the capacity to deliver professional forestry services to private landowners, including qualified consulting foresters (esp. NRCS-certified Technical Service Providers) available to write forest management plans that include enhancing wildlife habitat condition, with a focus on plans that meet NRCS standards for cost-share. Proposals should use innovative strategies to address challenges such as recruitment and retention. Projects are strongly encouraged to target private landowners and contribute to the goals of the Natural Resource Conservation Service’s Working Land for Wildlife initiatives including the [Golden-winged Warbler initiative](#) and the [Bobwhite Quail initiative](#).
- **Grassland Restoration:** Restore grassland habitat on public and private lands to support grassland obligate species such as bobwhite quail, eastern meadowlark, eastern box turtle, and pollinators. Projects that plan grassland habitat in the landscape context are encouraged.
- **Mine Land Restoration:** Restore forest and native grassland habitat on previously-mined state or private non-industrial forests. Tribal lands, including federal land held in trust for the benefit of tribes, are also eligible. Partnership/collaboration with state forestry agencies is encouraged.

**Special Opportunity!** This year there is dedicated funding from the Bezos Earth Fund and the U.S. Forest Service to reforest and restore native vegetation on mined land.

Projects also are encouraged to use the Forestry Reclamation Approach and restore habitat in a landscape context that is complementary to other ongoing restoration (e.g., dynamic forest blocks, restoration in priority watersheds for brook trout, hellbender, or freshwater mussels). Projects that are located in counties with persistent poverty and/or that engage underserved and socially disadvantaged landowners also are strongly encouraged.

### 3. Restore Aquatic Ecosystems

NFWF will invest improving stream health by removing passage barriers, restoring riparian buffers, and improving water quality and hydrology to bolster populations of eastern brook trout, eastern hellbender and native freshwater mussels. **Focal geographies:** *Upper-Middle Allegheny, Pennsylvania Wilds, Laurel Highlands, Southern Allegheny Front, Monongahela Forest, Blue Ridge and Southwestern Virginia*. Additionally, *French Creek, Shenango and Allegheny County* are geographic priorities for mussel-focused restoration. Projects targeting hellbender habitat are strongly encouraged to target private landowners and contribute to the goals of the Natural Resource Conservation Service’s [Working Lands for Wildlife - Eastern Hellbender initiative](#).

- **Eastern Brook Trout Patch Assessments:** Assess threats and limiting factors in priority brook trout population patches to identify restoration opportunities. Patch assessments should include, but are not limited to, identifying passage barriers, water quality hot spots, riparian buffer gaps, unrestricted livestock access, and presence of non-native trout and invasive species. NFWF prioritizes watersheds that contain allopatric populations that meet the criteria to be characterized as *strongholds* through Trout Unlimited’s [Eastern Brook Trout Conservation Portfolio](#).

- **Restore Aquatic Connectivity:** Prioritize and remove barriers to aquatic organism passage (AOP) to bolster resilient populations of brook trout, hellbender and mussel host species. Projects may include replacing culverts and removing under-utilized dams. Project funds can support on-the-ground restoration, engineering design, permit fees, and stream barrier surveys to determine priorities for future connectivity restoration. Projects that scale up prioritization, planning and design to better position the region to take full advantage of new Federal infrastructure funding are strongly encouraged. Projects also are encouraged, where possible, to demonstrate the flood risk reduction co-benefits of AOP projects. The Aquatic Barrier Prioritization Tool <http://maps.freshwaternet.org/northeast/> is a useful resource in planning projects.
- **Restore Riparian Forests:** Buffers should be sized and placed to maximize benefits to eastern brook trout, hellbender, mussels and other wildlife.<sup>3</sup> Projects should include site preparation and long-term maintenance strategies for new buffers, addressing issues such as deer browse, invasive species and competitive vegetation management, and mortality.
- **Improve Conservation on Agricultural Lands:** Provide technical and financial assistance to address resource concerns (e.g., nutrient and sediment loading, unrestricted livestock access, etc.) on farms located in watersheds that have the greatest benefits for eastern brook trout. Projects should implement conservation practices that meet or exceed the performance of related federal and state-approved methods and specifications, unless flexibility is necessary to demonstrate an innovative approach or technology. Outreach should target farms that have conservation, manure management, and/or nutrient management plans in place, as appropriate. Where these plans are not in place, projects should prioritize developing plans prior to implementing conservation practices.
- **Reduce Erosion and Sedimentation from Dirt and Gravel Roads:** Implement dirt and gravel road best management practices, in partnership with county conservation districts, municipalities, and state agencies. Projects should focus on road-stream crossings that will reduce sediment delivery to streams with priority eastern brook trout population patches or priority watersheds for eastern hellbender and freshwater mussels.
- **Hellbender Habitat Assessments and Population Response Monitoring:** Prioritize watersheds for hellbender habitat restoration, assess threats and limiting factors to hellbender success, and implement restoration strategies (e.g., AOP, riparian buffers) to sustain and expand hellbender populations. Projects are encouraged to monitor hellbender population response to interventions, including eDNA.
- **Develop or Enhance State-wide or Localized Freshwater Mussel Conservation Strategies:** Create the necessary framework for the long-term conservation of freshwater mussels throughout the Central Appalachia Region. Activities may include but are not limited to: strategic planning and partnership development, surveys to expand current

---

<sup>3</sup> In most cases, reforested buffers should range between 50 feet and 100 feet wide, be planted with 200 – 250 native tree and shrub seedlings per acre, and be protected from deer browse and competition from invasive species.



baseline distribution datasets for common and threatened and endangered species, identify priority watersheds for restoration or reintroductions, and outreach and education.

- **Reestablish Freshwater Mussel Occupancy:** Reintroduce freshwater mussel species to targeted watersheds, especially those that have had significant dam removals, flow regime changes, or water quality improvements that would increase potential for reproductive success. Projects are encouraged to monitor freshwater mussel population response to interventions, including eDNA.

**4. Community Impact and Engagement:** Projects that incorporate outreach to communities, foster community engagement, and pursue collaborative management leading to measurable conservation benefits are encouraged. When possible, projects should be developed through community input and co-design processes ensuring traditional knowledge elevation. Additionally, projects should engage community-level partners (e.g., municipalities, NGOs, community organizations, community leaders) to help design, implement, and maintain projects to secure maximum benefits for communities, maintenance, and sustainability post-grant award.

## PROJECT METRICS

To better gauge progress on individual grants and to ensure greater consistency of project data provided by multiple grants, the *Central Appalachia Habitat Stewardship Program* has a list of metrics in Easygrants for full proposal applicants to choose from for future reporting. We ask that applicants select only the most relevant metrics from this list for their project (all possible program metrics are shown in the table below). If you think an applicable metric has not been provided, please contact *John Wright* to discuss acceptable alternatives.

Activity	Metric	Guidance
<b>Priority: Restore and Manage Forest Blocks in Focal Geographies</b>		
Dynamic Forest Block Restoration	Central Apps - Forest Management Planning - # of acres covered by dynamic forest plans	Enter the total acres for each dynamic forest plan (sum if several plans are created under the grant).
	Central Apps - Golden-Winged Warbler - Improved management practices - Acres under improved management	Enter the acres of forest management implemented to enhance <b>young forest habitat</b> . In NOTES indicate if the acres are part of a dynamic forest plan.
	Central Apps - Wood Thrush - Improved management practices - Acres under improved management	Enter the acres of forest management implemented to enhance <b>mature forest habitat</b> . In NOTES indicate if the acres are part of a dynamic forest plan.
	Central Apps - Cerulean Warbler - Improved management practices - Acres under improved management	Enter the acres of forest management implemented to <b>enhance late successional forest habitat</b> . In NOTES indicate if the acres are part of a dynamic forest plan.
Restoration Response Monitoring	Central Apps - Monitoring - Acres being monitored	Enter the total number of acres being monitored. In NOTES indicate the species and habitat being monitored. If you are monitoring eastern brook trout please use the metric specifically provided for eastern brook trout- # sites being monitored
Species Outcomes	Central Apps - Cerulean Warbler - Population - # sites occupied by species	Enter the number of sites occupied by cerulean warbler
	Central Apps - Wood Thrush - Population - # sites occupied by species	Enter the number of sites occupied by wood thrush
	Central Apps - Golden-Winged Warbler - Population - # sites occupied by species	Enter the number of sites occupied by golden-winged warbler
<b>Priority: Forest and Grassland Management for Wildlife, Carbon and Water</b>		
Outreach	Central Apps - Outreach/ Education/ Technical Assistance - # people reached by outreach, training, or technical assistance activities	Enter the number of people reached by outreach, training, or technical assistance activities

Technical Assistance	Central Apps - Outreach/ Education/ Technical Assistance - # of people demonstrating a minimum level of behavior change	Enter the number of individuals demonstrating a minimum level of behavior change
Grassland Restoration	Central Apps - Land Restoration - acres restored	Enter the number of acres of native grasslands restored. In the NOTES, specify landcover prior to restoration (barren, cropland) and post-restoration (i.e., grassland).
Mine Land Restoration	Central Apps - Land Restoration - acres restored	Enter the number of acres of mine land restored with native vegetation. In the NOTES, specify landcover prior to restoration (e.g., barren) and post-restoration (broadleaf forest, mixed forest, grassland).
<b>Priority: Restore Aquatic Ecosystems</b>		
Eastern Brook Trout Patch Assessments	Central Apps - Research - # of sites assessed	Enter the number of eastern brook trout population patches being assessed.
Restore Aquatic Connectivity within and between Priority Population Patches	Central Apps - Fish passage improvements - # passage barriers rectified	Enter the number of aquatic organism passage barriers rectified. In the NOTES section indicate what type(s) of barrier(s) are being removed or replaced (e.g., culvert, dam).
	Central Apps - Fish passage improvements - Miles of stream opened	Enter the number of miles of previously inaccessible stream habitat opened. In NOTES list the targeted species.
Restore Riparian Forests	Central Apps - Riparian restoration - Miles restored	Enter total number of riparian forest miles restored. In the NOTES section, specify the landcover type prior to planting (barren, cropland, grassland), buffer width, and the dominant vegetation being planted (Broadleaf, Conifer, Shrub). If you are restoring wetlands, use the acres of wetland restored metric.
Improve Conservation on Agricultural Lands	Central Apps - BMP implementation for nutrient or sediment reduction - Acres with conservation tillage	Enter the number of cropland acres with conservation tillage practices. Describe the conservation tillage practices in the NOTES section.
	Central Apps - BMP implementation for nutrient or sediment reduction - Acres with cover crops	Enter the number of cropland acres with cover crops. Describe the cover crop practices in the NOTES section.
	Central Apps - BMP implementation for nutrient or sediment reduction - Acres with nutrient management	Enter the number of cropland acres with nutrient/manure management practices. Describe the nutrient/manure management practices in the NOTES section.
	Central Apps - BMP implementation for livestock fencing - Miles of fencing installed	Enter the number of miles of fencing installed (fencing on both sides of a stream should be reported as double the miles).
	Central Apps - Floodplain restoration - Acres restored	Enter the total acres restored. Use separate metrics provided for riparian buffers, livestock exclusion, and wetland restoration.
	Central Apps - Wetland restoration - Acres restored	Enter the number of acres of wetland restored. If you are restoring riparian forests use the miles of riparian forest restoration metric.
Restore aquatic habitat	Central Apps – Instream habitat restoration	Enter the number of miles of instream habitat restored.
Reduce Erosion and Sedimentation from Dirt and Gravel Roads	Central Apps - BMP implementation for road improvements - Miles of road improved	Indicate the number of miles improved by installing BMPs that reduce erosion
Restoration Response Monitoring	Central Apps - Monitoring - # sites being monitored	Enter the # of small watersheds being monitored for eastern brook trout population response to habitat restoration.
Eastern Brook Trout Outcome	Central Apps - Habitat Quality - # of habitat units improved	Enter the number of eastern brook trout population patches with improved status
Re-establish Hellbender Occupancy	Central Apps - Nesting Sites - # nesting sites installed	Enter the number of hellbender nest sites created or enhanced.
	Central Apps - Hellbender - Population - Miles of habitat occupied	Enter the number of miles of habitat occupied by eastern hellbender
Re-establish Freshwater Mussel Occupancy	Central Apps - Captive breeding/ rearing/ rehab facilities - # individuals released	Enter the number of individual freshwater mussels released or translocated

Other Activities		
Land Protection	Central Apps – Conservation easements - Acres protected under long- term easement (permanent or > 30-yr)	Enter the number of acres
Tree Planting	Central Apps - # of trees planted	Enter # trees planted. In the NOTES, specify landcover type prior to planting (barren, cropland, grass, shrub), # of acres, forest type planted (broadleaf, conifer, swamp--either broadleaf or conifer, shrub), density per acre, and mortality rate.
Volunteers	Central Apps - Volunteer participation - # volunteers participating in projects	Enter the number of volunteers participating in habitat restoration activities

## ELIGIBILITY

### Eligible and Ineligible Entities

- Eligible applicants include non-profit 501(c) organizations, state government agencies, local governments, municipal governments, Tribal Governments and Organizations, and educational institutions.
- Ineligible applicants include U.S. Federal government agencies, businesses, unincorporated individuals, and international organizations.

### Ineligible Uses of Grant Funds

- **Equipment:** Applicants are encouraged to rent equipment where possible and cost-effective or use matching funds to make those purchases. NFWF acknowledges, however, that some projects may only be completed using NFWF funds to procure equipment. If this applies to your project, please contact the program staff listed in this RFP to discuss options.
- Federal funds and matching contributions may not be used to procure or obtain equipment, services, or systems (including entering into or renewing a contract) that use telecommunications equipment or services produced by Huawei Technologies Company or ZTE Corporation (or any subsidiary or affiliate of such entities) as a substantial or essential component, or as critical technology of any system. Refer to Public Law 115-232, section we have 889 for additional information.
- NFWF funds and matching contributions may not be used to support political advocacy, fundraising, lobbying, litigation, terrorist activities or Foreign Corrupt Practices Act violations.
- NFWF funds may not be used to support ongoing efforts to comply with legal requirements, including permit conditions, mitigation and settlement agreements. However, grant funds may be used to support projects that enhance or improve upon existing baseline compliance efforts.

## FUNDING AVAILABILITY AND MATCH

The Central Appalachia Habitat Stewardship Program will award approximately \$3 million in grants this year. Grants will range from \$50,000 to \$500,000 each. Projects should begin within six months of the award date and be completed within three to four years from the agreed start date. These grants strongly encourage non-federal matching contributions valued at 50% or more of the total project costs (1:1 ratio).



## EVALUATION CRITERIA

All proposals will be screened for relevance, accuracy, completeness, and compliance with NFWF and funding source policies. Proposals will then be evaluated by review teams representing the relevant funders and technical experts based primarily on the extent to which they meet the following three criteria:

- **Program Goals and Priorities** – Project has specific, quantifiable performance metrics to evaluate project success. Project builds off of an existing conservation or recovery plan, addresses one or more of the program priorities listed on page two, and aligns with agency funding priorities as specified in Appendix 2.
- **Technical Merit** – Project is technically sound and feasible, and the proposal sets forth a clear, logical and achievable work plan and timeline. Project engages appropriate technical experts throughout project planning, design, and implementation to ensure activities are technically sound and feasible.
- **Budget** – Costs are allowable, reasonable and budgeted in accordance with NFWF’s [Budget Instructions](#) cost categories. Federally funded projects must be in compliance with [2 CRF 200](#) as applicable.

Additional factors that will be considered when reviewing proposals include:

- **Partnership and Community Impact** – The applicant organization partners and engages collaboratively with diverse local community members, leaders, community-based organizations, and other relevant stakeholders to develop and implement the proposed project. This ensures long-term sustainability and success of the project, integration into local programs and policies, and community acceptance of proposed restoration actions. Non-traditional partners or communities are enlisted to broaden the sustained impact from the project. Describe the community characteristics of the project area, identify any communities impacted, describe outreach and community engagement activities and how those will be monitored and measured. Use demographic data to support descriptions and submit letters of support from community partners and/or collaborators demonstrating their commitment to the project and engagement in project activities as proposed.
- **Cost-Effectiveness** – Cost-effectiveness analysis identifies the economically most efficient way to meet project objectives. Project includes a cost-effective budget that balances performance risk and efficient use of funds. Cost-effectiveness evaluation includes, but is not limited to, an assessment of effective direct/indirect costs across all categories in the proposed budget according to the type, size and duration of project and project objectives. Project budgets will be compared to similar projects to ensure proposed costs across all budget categories are reasonable for the activities being performed and the outcomes proposed.

- **Monitoring** – Project includes a plan for monitoring progress during and after the proposed project period to track project success and adaptively address new challenges and opportunities as they arise.
- **Long-term Sustainability** – Project will be maintained to ensure benefits are achieved and sustained over time. This should include how future funding will be secured to implement necessary long-term monitoring and maintenance activities.

## **OTHER**

**Budget** – Costs are allowable, reasonable and budgeted in accordance with NFWF’s [Budget Instructions](#) cost categories. Federally-funded projects must be in compliance with [OMB Uniform Guidance](#) as applicable.

**Environmental Services** – NFWF funds projects in pursuit of its mission to sustain, restore, and enhance the nation's fish, wildlife, plants, and habitats for current and future generations. NFWF recognizes that some benefits from projects may be of value with regards to credits on an environmental services market (such as a carbon credit market). NFWF does not participate in, facilitate, or manage an environmental services market nor does NFWF assert any claim on such credits.

**Intellectual Property** – Intellectual property created using NFWF awards may be copyrighted or otherwise legally protected by award recipients. NFWF may reserve the right to use, publish, and copy materials created under awards, including posting such material on NFWF’s website and featuring it in publications. NFWF may use project metrics and spatial data from awards to estimate societal benefits that result and to report these results to funding partners. These may include but are not limited to: habitat and species response, species connectivity, water quality, water quantity, risk of detrimental events (e.g., wildfire, floods), carbon accounting (e.g., sequestration, avoided emissions), environmental justice, and diversity, equity, and inclusion.

**Matching Contributions** – Matching Contributions consist of cash, contributed goods and services, volunteer hours, and/or property raised and spent for the Project during the Period of Performance. Larger match ratios and matching fund contributions from a diversity of partners are encouraged and will be more competitive during application review.

**Procurement** – If the applicant chooses to specifically identify proposed Contractor(s) for Services, an award by NFWF to the applicant does not constitute NFWF’s express written authorization for the applicant to procure such specific services noncompetitively. When procuring goods and services, NFWF recipients must follow documented procurement procedures which reflect applicable laws and regulations.

**Publicity and Acknowledgement of Support** – Award recipients will be required to grant NFWF the right and authority to publicize the project and NFWF’s financial support for the grant in press releases, publications and other public communications. Recipients may also be asked by NFWF to provide high-resolution (minimum 300 dpi) photographs depicting the project.

**Receiving Award Funds** – Award payments are primarily reimbursable. Projects may request funds for reimbursement at any time after completing a signed agreement with NFWF. A request of an advance of funds must be due to an imminent need of expenditure and must detail how the funds will be used and provide justification and a timeline for expected disbursement of these funds.

**Compliance Requirements** – Projects selected may be subject to requirements under the National Environmental Policy Act, Endangered Species Act (state and federal), and National Historic Preservation Act. Documentation of compliance with these regulations must be approved prior to initiating activities that disturb or alter habitat or other features of the project site(s). Applicants should budget time and resources to obtain the needed approvals. As may be applicable, successful applicants may be required to comply with additional Federal, state or local requirements and obtain all necessary permits and clearances.

**Permits** – Successful applicants will be required to provide sufficient documentation that the project expects to receive or has received all necessary permits and clearances to comply with any Federal, state or local requirements. Where projects involve work in the waters of the United States, NFWF strongly encourages applicants to conduct a permit pre-application meeting with the Army Corps of Engineers prior to submitting their proposal. In some cases, if a permit pre-application meeting has not been completed, NFWF may require successful applicants to complete such a meeting prior to grant award.

**Federal Funding** – The availability of federal funds estimated in this solicitation is contingent upon the federal appropriations process. Funding decisions will be made based on level of funding and timing of when it is received by NFWF.

**Applicant Demographic Information** – In an effort to better understand diversity in our grantmaking, NFWF is collecting basic demographic information on applicants and their organizations via a voluntary survey form (available in Easygrants). This information will not be shared externally or with reviewers and will not be considered when making grant decisions. For more details, please see the tip sheet and the Uploads section of Easygrants.

## TIMELINE

Dates of activities are subject to change. Please check the program page of the NFWF website for the most current dates and information [Central Appalachia Habitat Stewardship Program](#).

Applicant Webinar	June 1, 2022, 1:30 PM-3:00 PM EDT <a href="#">Register Here</a>
Full Proposal Due Date	Thursday, July 14, 2022 by 11:59 PM EDT
Review Period	Mid-July to Mid-September
Awards Announced	Mid-November

## HOW TO APPLY

All application materials must be submitted online through National Fish and Wildlife Foundation's Easygrants system.

1. Go to [easygrants.nfwf.org](https://easygrants.nfwf.org) to register in our Easygrants online system. New users to the system will be prompted to register before starting the application (if you already are a registered user, use your existing login). Enter your applicant information. Please disable the pop-up blocker on your internet browser prior to beginning the application process.
2. Once on your homepage, click the "Apply for Funding" button and select this RFP's "Funding Opportunity" from the list of options.
3. Follow the instructions in Easygrants to complete your application. Once an application has been started, it may be saved and returned to at a later time for completion and submission.

## APPLICATION ASSISTANCE

A *Tip Sheet* is available for quick reference while you are working through your application. This document can be downloaded [here](#).

Additional information to support the application process can be accessed on the NFWF website's [Applicant Information](#) page.

For more information or questions about this RFP, please contact:

**John Wright**, Manager, Northeastern Regional Office [John.Wright@nfwf.org](mailto:John.Wright@nfwf.org)

For issues or assistance with our online Easygrants system, please contact:

Easygrants Helpdesk

Email: [Easygrants@nfwf.org](mailto:Easygrants@nfwf.org)

Voicemail: 202-595-2497

Hours: 9:00 am to 5:00 pm ET, Monday-Friday.

Include: your name, proposal ID #, e-mail address, phone number, program you are applying to, and a description of the issue.