



NFWF



NFWF

Chesapeake Bay Stewardship Fund



Chesapeake Bay Program  
Science. Restoration. Partnership.

## PENNSYLVANIA MOST EFFECTIVE BASINS GRANTS

### 2021 REQUEST FOR PROPOSALS

Full Proposal Due Date: *Friday, July 30, 2021 by 11:59pm ET*

### OVERVIEW

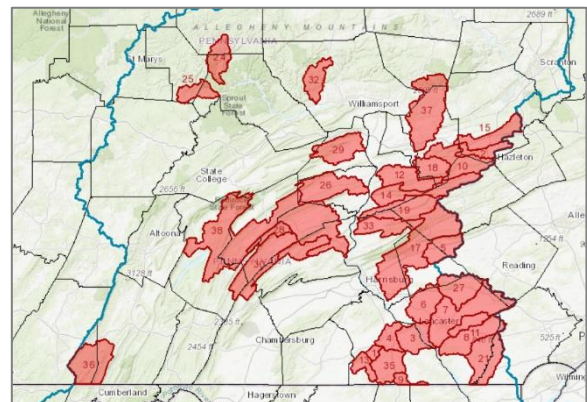
The National Fish and Wildlife Foundation (NFWF), in partnership with the U.S. Environmental Protection Agency (EPA) and the federal-state Chesapeake Bay Program partnership, is soliciting proposals to restore water quality and habitats of the Chesapeake Bay and its tributary rivers and streams in Pennsylvania.

NFWF is soliciting proposals under the **Pennsylvania Most Effective Basins (PA-MEB)** grants program for projects that accelerate implementation of cost-effective agricultural best management practices (“practices”) in selected basins of the Chesapeake Bay watershed of Pennsylvania. The intent of the PA-MEB program is to assist the Commonwealth of Pennsylvania in achieving its 2025 water quality goals for the agricultural sector under the Chesapeake Bay Total Maximum Daily Load (TMDL) and Pennsylvania’s Phase III Watershed Implementation Plan (WIP).

NFWF estimates awarding a total of \$3-6 million in grants through the PA-MEB program in 2021 contingent on the availability of funding. Major funding comes from the EPA Chesapeake Bay Program Office.

### GEOGRAPHIC FOCUS

All projects must occur wholly within selected basins of the Chesapeake Bay watershed in Pennsylvania, identified as the **most effective basins** for reducing the effects of excess nutrient loading to the Bay. EPA identified these most effective basins based on both cost effectiveness and the capacity of practices implemented in each basin to positively influence dissolved oxygen in the Bay. A map of the most effective basins in Pennsylvania and details on EPA’s methodology for selecting them can be found [here](#).



### PROGRAM PRIORITIES

The primary purpose of the PA-MEB program is to maximize cost-effective reductions of agricultural nitrogen loads through the implementation of eligible agricultural conservation practices in Pennsylvania’s most effective basins, consistent with the Chesapeake Bay Total Maximum Daily Load (TMDL) and Pennsylvania’s Phase III Watershed Implementation Plan (WIP). In addition, NFWF will prioritize funding for proposals that can yield rapid implementation outcomes (with consideration for design, engineering, and construction needs) and those that provide additional conservation and farm management co-benefits beyond water quality improvement.

## Eligible Practices

EPA and NFWF have identified the following eligible practices for the PA-MEB program, based on the demonstrated ability of these practices to yield relatively low-cost reductions in agricultural nitrogen loading. Notably, these eligible practices include both annual (i.e., “management”) practices that require ongoing implementation to yield creditable load reduction benefits in future years, as well as structural (i.e., “engineered”) practices that, once implemented, generate multiple years of creditable load reductions based on their continued performance on the landscape.

- Tillage Management
- Tree Planting
- Wetland Restoration
- Prescribed Grazing
- Manure Incorporation
- Manure Injection
- Manure Transport
- Barnyard Runoff Control
- Loafing Lot Management
- Alternative Crops
- Retirement of Highly Erodible Land
- Cover Crops – Traditional
- Cover Crops – Commodity
- Forest and Grass Buffers
- Forest and Grass Buffers with Stream Exclusion Fencing
- Core Nutrient Management -- Nitrogen
- Supplemental Nutrient Management – N Rate
- Supplemental Nutrient Management – N Placement
- Supplemental Nutrient Management – N Timing
- Soil and Water Conservation Plans

Additional information on each practice, including associated definitions and other common practice names, can be found in Appendix A. Further information on each practice, relevant qualifying conditions, and crediting methods is available through CBP’s [“Quick Reference Guide for Best Management Practices”](#) and established protocols approved by CBP’s [BMP expert panels](#).

### Priority #1 – Cost-Effectiveness for Agricultural Nitrogen Load Reductions

For the purposes of the PA-MEB program, **cost-effectiveness for agricultural nitrogen load reduction** is defined as the **total project funding request** divided by the **total nitrogen load reduction potential** of the proposed practice(s) to be implemented (i.e., \$/lb N reduced). Total nitrogen load reduction potential further considers both the estimated **annual nitrogen load reduction** from the proposed practice(s) to be implemented, calculated in accordance with established methods approved by the Chesapeake Bay Program for crediting under the Chesapeake Bay TMDL, as well as the **proposed timeframe** for generating creditable load reduction benefits for proposed practice(s) in future years.

In determining proposed timeframe for generating creditable load reductions, NFWF will rely on both the default **practice credit durations** assigned by EPA and CBP, which specify the length of time specific practices generate creditable load reductions for TMDL purposes, as well as proposed approaches put forward by applicants to sustain implementation and performance of funded practices beyond these standard practice credit durations.

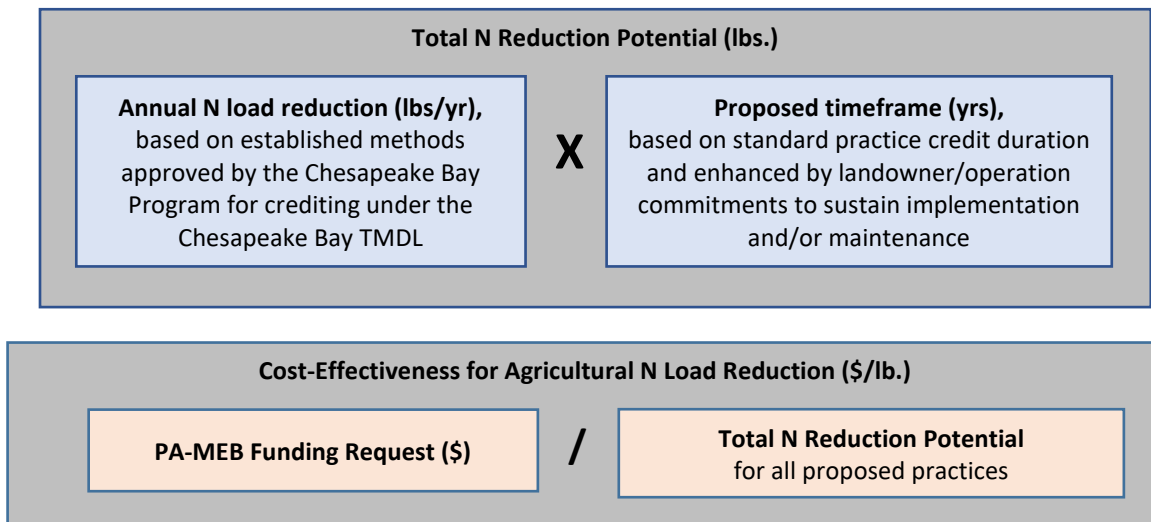
NFWF encourages applicants to actively seek and propose methods and approaches to sustain load reductions beyond standard practice credit durations. Selected examples include obtaining signed agreements with eligible landowners/operators to sustain implementation of annual practices (e.g., cover



crops) for multi-year periods and/or maintain structural practices beyond their standard practice credit duration, or by incorporating new practice implementation and maintenance requirements with new or amended conservation or agricultural land preservation easements. **Any proposal seeking to obtain credit for load reductions beyond the standard practice credit must include associated conditions, roles, and responsibilities in the Operations, Maintenance, and Repair Plan attachment to Landowner-Grantee Agreements.**

Applicants may further propose to bundle implementation of multiple practices across multiple operations and/or landowners. However, the total nitrogen load reduction potential will be calculated for each practice individually and summed to obtain a single total nitrogen load reduction potential value for the proposal. Signed Landowner-Grantee Agreements must also be provided for all proposed cooperating landowners/operators.

### PA-MEB Program Metrics



To ensure consistency in estimating total load reduction potential across proposals and fairness in evaluating competing proposals, NFWF is requiring all applicants to utilize the FieldDoc platform to document proposed practices for implementation. FieldDoc will then calculate estimated load reduction potential for each practice and for each overall proposal using established methods approved by the Chesapeake Bay Program for crediting under the Chesapeake Bay TMDL. NFWF will entertain Applicants seeking to use other CBP-approved tools or methods to calculate load reduction potential must contact NFWF in advance of proposal submission and obtain prior written approval from NFWF in order for associated proposals to be considered.

### Priority #2 – Readiness to Proceed

Given approaching 2025 goals for the Chesapeake Bay TMDL, NFWF is seeking projects for the PA-MEB program that can move quickly into implementation and delivery of load reduction benefits following award. Accordingly, NFWF will consider the status of necessary planning, design, and permitting required to proceed with implementation. As a result, while technical assistance costs associated with planning, design, and construction of eligible practices are allowable under the PA-MEB



NFWF



NFWF

Chesapeake Bay Stewardship Fund



program, the most competitive proposals will minimize technical assistance and administrative costs and maximize funding for implementation and associated load reduction outcomes.

### Priority #3 – Conservation and Farm Management Co-Benefits

While the PA-MEB program prioritizes cost-effective agricultural nitrogen load reductions consistent with the Chesapeake Bay TMDL and the water quality goals of the Chesapeake Bay Watershed Agreement, NFWF and program partners are seeking proposals that can also benefit other goals and outcomes of the [Watershed Agreement](#) and NFWF's [Chesapeake Bay Business Plan](#). Additional resources on the multiple benefits of nutrient and sediment best management practices, developed by CBP in support of Phase III WIP planning, can be found [here](#).

In addition to co-benefits for regional ecosystem restoration efforts, NFWF is seeking proposals that deliver operational and/or financial benefits for eligible landowners/operators. Applicants will be asked to describe these benefits for proposed cooperating landowners/operators. Selected examples include reducing operating costs, simplifying or streamlining farm management processes, and increasing revenues from agricultural and non-agricultural products and services generated by cooperating landowners/operators.

### PROJECT METRICS

To better gauge progress on individual grants and to ensure greater consistency of project data provided by multiple grants, NFWF has provided a list of metrics in *Easygrants* for grantees to choose from for reporting. For the PA-MEB program, applicants and awardees will be required to report both project-level metrics via *Easygrants* and more detailed site and practice-level data via [FieldDoc.org](#) (see below for additional details).

The following is a complete list of applicable metrics. It is in the applicant's best interest to be selective of the most relevant metrics that are well-aligned with the proposed project's objectives and outcomes. If you do not believe an applicable metric has been provided, please contact Nicole Thompson at [nicole.thompson@nfwf.org](mailto:nicole.thompson@nfwf.org) or (202) 857-0166, to discuss acceptable alternatives.

Applicable Metrics	Metric Description/Instructions
<b>CBSF - BMP implementation for nutrient or sediment reduction - Lbs N avoided (annually)*</b>	Please use FieldDoc to develop estimates of the total nitrogen load reduction potential your proposed project. Enter FieldDoc-generated pollutant load reduction totals in this field then upload your FieldDoc Project Summary in the "Uploads" section.
<b>CBSF - BMP implementation for nutrient or sediment reduction - Acres with BMPs</b>	Enter the total number of acres under agricultural or non-urban BMPs to reduce nutrient or sediment loading. Do not double-count individual acres which have multiple BMPs.
<b>CBSF - Riparian restoration - Miles restored</b>	Enter the number miles of riparian habitat restored through the implementation of forest or grass buffers that are at least 35 feet wide. If you are implementing livestock exclusion, report associated outcomes instead under the "CBSF - BMP implementation for livestock exclusion -- miles of fencing installed" metric.
<b>CBSF - BMP implementation for livestock fencing - Miles of fencing installed</b>	Enter the number of miles of livestock exclusion installed. Assume activities include exclusion fencing and a 35-foot forest or grass buffer, unless otherwise noted.



NFWF



NFWF

Chesapeake Bay Stewardship Fund



Chesapeake Bay Program  
Science. Restoration. Partnership.

Applicable Metrics	Metric Description/Instructions
<b>CBSF - Floodplain restoration - Acres restored</b>	Enter the number of acres of floodplain restored for nutrient and sediment load reduction, consistent with qualifying conditions and restoration protocols established by the Chesapeake Bay Program. Also report any associated linear stream restoration outcomes through the "CBSF - Stream restoration – Miles restored" metric.
<b>CBSF - Wetland restoration - Acres restored</b>	Enter the number of acres of wetland habitat restored, created, or enhanced.
<b>CBSF - Conservation easements - Acres protected under easement</b>	Enter the number of acres protected under long-term easement (permanent or >30-yr).
<b>CBSF - Land, wetland restoration - Number of trees planted</b>	Enter the number of trees planted for all non-urban projects/practices.

## ELIGIBILITY

**Eligible Applicants** for the PA-MEB program are limited to conservation districts, [technical service providers](#) certified by the Pennsylvania office of the USDA Natural Resources Conservation Service, [countywide action planning coordinators](#) identified through the Pennsylvania Department of Environmental Protection’s Phase III WIP planning process. Non-profit 501(c) organizations and local and municipal governments are also eligible, but must demonstrate partnership and coordination with appropriate conservation districts, technical service providers, and/or countywide action planning coordinators by providing associated letters of support.

**For-profit applicants:** Please note that this is a request for grant proposals, not a procurement of goods and services; see the Budget section below for specific cost considerations.

**Eligible Landowners/Operators** are limited to individuals and entities with ownership or management control of an agricultural operation, as defined by applicable Pennsylvania statutes, and located within identified most effective basins. Applicants must also complete signed Landowner-Grantee Agreements for all proposed landowners/operators prior to executing grant contracts with NFWF (see Appendix B). In addition, landowners/operators must be able to document compliance with all applicable agricultural erosion and sediment control, manure, and/or nutrient management plan requirements prior to project completion.

Questions about applicant and landowner/operator eligibility should be directed to NFWF prior to application.

### Ineligible Uses of Grant Funds

- **Equipment:** Applicants are encouraged to rent equipment where possible and cost-effective or use matching funds to make those purchases. NFWF acknowledges, however, that some projects may only be completed using NFWF funds to procure equipment. If this applies to your project, please contact the NFWF program staff listed in this RFP (p. 8, Application Assistance) to discuss options.
- Federal funds and matching contributions may not be used to procure or obtain equipment, services, or systems (including entering or renewing a contract) that uses telecommunications equipment or services produced by Huawei Technologies Company or ZTE Corporation (or any subsidiary or affiliate of such entities) as a substantial or essential component, or as critical technology of any system. Refer to Public Law 115-232, section 889 for additional information.





NFWF



NFWF

Chesapeake Bay Stewardship Fund



Chesapeake Bay Program  
Science. Restoration. Partnership.

- NFWF funds and matching contributions may not be used to support political advocacy, fundraising, lobbying, litigation, terrorist activities or Foreign Corrupt Practices Act violations.
- NFWF funds may not be used to support ongoing efforts to comply with legal requirements, including permit conditions, mitigation and settlement agreements. However, grant funds may be used to support projects that enhance or improve upon existing baseline compliance efforts. For the purposes of the PA-MEB program, this condition means that operations under enforcement action by the Pennsylvania Department of Environmental Protection, State Conservation Commission, or U.S. EPA are ineligible for program funding. Proposed activities on all other operations, consistent with program priorities and eligibility, are generally considered allowable under this provision.

## FUNDING AVAILABILITY AND MATCH

NFWF will award \$3-6 million in grants through the PA-MEB program in 2021 through grants of up to \$250,000 per proposal. Multiple proposals may be submitted that benefit a single landowner/operator, but each proposal will be evaluated independently. Given program priorities for rapid implementation outcomes, NFWF generally expects awarded projects to be completed within 18 months.

There is no match requirement for the PA-MEB program. However, proposals that can effectively leverage multiple funding sources to support implementation will be viewed favorably. Applicants will be encouraged, but not required, to document leveraged federal, state, local, or private funding supporting implementation of proposed practices.

## EVALUATION CRITERIA

All proposals will be screened for relevance, accuracy, completeness, and compliance with NFWF and funding source policies. Each proposal will then be evaluated based on the extent to which it meets the following criteria for the PA-MEB program. **Bolded** criteria are considered the primary evaluation criteria for the program.

### Conservation Outcomes

- **Total Agricultural Nitrogen Load Reduction Potential:** Proposal contributes meaningful agricultural nitrogen load reduction outcomes in support of the Chesapeake Bay TMDL, Pennsylvania’s Phase III WIP and, as applicable, associated Countywide Action Plans.
- **Conservation and Farm Management Co-Benefits:** Proposed implementation actions yield clear and meaningful co-benefits for regional ecosystem conservation and restoration goals and farm management outcomes.

### Budget

- **Cost-Effectiveness for Agricultural Nitrogen Load Reduction:** Proposals that demonstrate the greatest cost-effectiveness for agricultural nitrogen load reductions (i.e., \$/lb. N reduced) will generally be the most competitive proposals.
- The quality and level of detail in the budget notes and budget narrative provide a clear and detailed understanding of the proposed funding request.
- Proposed costs are reasonable based on the work plan, local or regional costs for similar activities, and commensurate with project outcomes.
- If proposed work is partnership based, a clear indication of funding for project partners, stakeholders, and community members, is evident.



NFWF



NFWF

Chesapeake Bay Stewardship Fund



Chesapeake Bay Program  
Science. Restoration. Partnership.

- Proposed funding request is well leveraged by the partners and other contributors through cash-, in-kind, and other match.
- The federal government has determined that a de minimis 10% indirect rate is an acceptable minimum for organizations without a NICRA. As such, NFWF reserves the right to scrutinize ALL proposals with indirect rates above 10% for cost-effectiveness.

#### Technical

- **Readiness:** Considering the status of necessary planning, design, and permitting and proposed implementation timeline, projects demonstrate a readiness to rapidly proceed to practice implementation.
- Proposal provides specific goals that correlate with a clear, logical and achievable work plan, milestones, and timeline.
- Proposed project team has the core competencies necessary to implement the proposed activities and achieve the proposed outcomes as well as the commitment to engage technical experts necessary to ensure activities are scientifically and technically sound and feasible.
- Proposal demonstrates an understanding of necessary permitting and environmental compliance requirements and the ability to obtain necessary approvals consistent with the proposed work plan and timeline.
- Applicant organization has demonstrated an ability to manage and implement similar projects on time and within budget.

#### OTHER

**Nutrient and Sediment Load Reductions** – As noted above, NFWF is requiring all applicants to utilize the FieldDoc platform to document proposed practices for implementation. When setting up proposed projects in FieldDoc, please be sure to list your application’s 5-digit Easygrants number in the FieldDoc project title.

Upon grant award, NFWF will require all projects submitted under this solicitation to utilize FieldDoc for tracking and reporting of applicable water quality improvement activities during the course of their grant project. For technical support on FieldDoc utilization during the proposal development process, please contact the Commons at [support@chesapeakecommons.org](mailto:support@chesapeakecommons.org). Further help documentation can be found on our [website](#).

**Practice Specifications** – Unless otherwise noted, all conservation and restoration practices implemented through the PA-MEB program must conform to established and recognized standards and practices specifications (e.g., NRCS practice standards, state stormwater manuals and retrofit guidance, approved Chesapeake Bay Program BMP Expert Panel reports). Applicants must note where proposed practices will deviate from established standards and provide reasonable justification for why an alternative is necessary.

**Monitoring** – NFWF may implement independent monitoring efforts in the future to measure the environmental outcomes from projects funded under this solicitation. Award recipients may be asked to facilitate granting of access to project sites for NFWF or its designees for future environmental monitoring purposes.

**Budget** – Costs are allowable, reasonable and budgeted in accordance with NFWF’s [Budget Instructions](#) cost categories. This funding opportunity will award grants of federal financial assistance funds; applicants must be able to comply with the OMB Uniform Guidance (2 CFR



NFWF



NFWF

Chesapeake Bay Stewardship Fund



200). While for-profit entities are eligible applicants, charges to a potential award may include actual costs only; recipients may not apply loaded rates or realize profit from an award of federal financial assistance funds.

**Matching Contributions** – Matching Contributions consist of cash, contributed goods and services, volunteer hours, and/or property raised and spent for the Project during the Period of Performance. Larger match ratios and matching fund contributions from a diversity of partners are encouraged and will be more competitive during application review.

**Procurement** – If the applicant chooses to specifically identify proposed Contractor(s) for Services, an award by NFWF to the applicant does not constitute NFWF’s express written authorization for the applicant to procure such specific services noncompetitively. When procuring goods and services, NFWF recipients must follow documented procurement procedures which reflect applicable laws and regulations.

**Publicity and Acknowledgement of Support** – Award recipients will be required to grant NFWF the right and authority to publicize the project and NFWF’s financial support for the grant in press releases, publications and other public communications. Recipients will also be asked by NFWF to provide high-resolution (minimum 300 dpi) photographs depicting the project.

**Receiving Award Funds** – Award payments are primarily reimbursable. Projects may request funds for reimbursement at any time after completing a signed agreement with NFWF. A request of an advance of funds must be due to an imminent need of expenditure and must detail how the funds will be used and provide justification and a timeline for expected disbursement of these funds.

**Compliance Requirements** – Projects selected may be subject to requirements under the National Environmental Policy Act, Endangered Species Act (state and federal), and National Historic Preservation Act. Documentation of compliance with these regulations must be approved prior to initiating activities that disturb or alter habitat or other features of the project site(s). Applicants should budget time and resources to obtain the needed approvals. As may be applicable, successful applicants may be required to comply with additional Federal, state, or local requirements and obtain all necessary permits and clearances.

**Quality Assurance** – If a project involves monitoring, data collection or data use, grantees will be asked to prepare and submit quality assurance documentation ([www.epa.gov/quality](http://www.epa.gov/quality)). [Examples of data collection or use](#) which requires a Quality Assurance Project Plan (QAPP):

- New data collection.
- Existing data use (a new use for data collected for a different purpose, whether by the same or different groups).
- Data collection and analysis associated with development or design of plans and projects e.g. fish passage, watershed or water quality/habitat restoration project plans etc.
- Water or other environmental monitoring.
- Model development or use etc.

No data collection or use may begin until a QAPP is approved and on file. Applicants should budget time and resources to complete this task. Plan to submit QAPPs several months in advance of data collection and analysis to allow for any needed comments and revisions to be made before final QAPP approval. If funded by the PA-MEB program, general assistance will be available to projects





NFWF



NFWF

Chesapeake Bay Stewardship Fund



Chesapeake Bay Program  
Science. Restoration. Partnership.

to help with scoping and review of the draft QAPPs in advance of submission for approval. Please contact [stephanie.heidbreder@nfwf.org](mailto:stephanie.heidbreder@nfwf.org) if you have any questions about whether your project would require a QAPP.

**Permits** – Successful applicants will be required to provide sufficient documentation that the project expects to receive or has received all necessary permits and clearances to comply with any Federal, state or local requirements. Where projects involve work in the waters of the United States, NFWF strongly encourages applicants to conduct a permit pre-application meeting with the Army Corps of Engineers prior to submitting their proposal. In some cases, if a permit pre-application meeting has not been completed, NFWF may require successful applicants to complete such a meeting prior to grant award.

**Federal Funding** – The availability of federal funds estimated in this solicitation is contingent upon the federal appropriations process. Funding decisions will be made based on level of funding and timing of when it is received by NFWF.

## TIMELINE

Dates of activities are subject to change and contingent on the availability of funding. Please check the Program page of the NFWF website for the most current dates and information (<http://www.nfwf.org/chesapeake>).

Applicant Webinar ( <a href="#">Registration</a> )	10:00AM, Wednesday, June 30 <sup>th</sup>
FieldDoc Webinar ( <a href="#">Registration</a> )	11:00AM, Wednesday, July 7 <sup>th</sup>
Proposal Due Date	Friday, July 30 <sup>th</sup> , 11:59pm ET
Proposal Review Period	August
Awards Announced	September (anticipated)

## HOW TO APPLY

All application materials must be submitted online through NFWF’s Easygrants system.

1. Go to [easygrants.nfwf.org](http://easygrants.nfwf.org) to register in our Easygrants online system. New users to the system will be prompted to register before starting the application (if you already are a registered user, use your existing login). Enter your applicant information.
2. Once on your homepage, click the “Apply for Funding” button and select this RFP’s “Funding Opportunity” from the list of options.
3. Follow the instructions in Easygrants to complete your application. Once an application has been started, it may be saved and returned to at a later time for completion and submission.

## APPLICATION ASSISTANCE

A *Tip Sheet* is available for quick reference while you are working through your application. This document can be downloaded at <http://www.nfwf.org/chesapeake>. Additional information to support the application process can be accessed on the NFWF website’s “Applicant Information” page (<http://www.nfwf.org/whatwedo/grants/applicants/Pages/home.aspx>). Please disable the pop-up blocker on your internet browser prior to beginning the application process.

For more information or questions about this RFP, please contact Jake Reilly ([jake.reilly@nfwf.org](mailto:jake.reilly@nfwf.org)), Stephanie Heidbreder ([stephanie.heidbreder@nfwf.org](mailto:stephanie.heidbreder@nfwf.org)) or Nicole Thompson ([nicole.thompson@nfwf.org](mailto:nicole.thompson@nfwf.org)) via e-mail or by phone at (202) 857-0166.



NFWF



NFWF

Chesapeake Bay Stewardship Fund



NFWF also offers on-demand, field-based project and partnership development support through [field liaisons](#), providing broad geographic coverage across the Bay region for agricultural conservation, urban stormwater management, wetland and watershed science, and habitat experience and expertise relevant to Bay restoration goals. Applicants may also contact these field liaisons using the information below to discuss potential projects:

Field Liaison Contact	Email	Phone	Sector Expertise
Kristen Saacke Blunk	<a href="mailto:kristen@headwaters-llc.org">kristen@headwaters-llc.org</a>	(814) 360-9766	• All Sectors
Kristen Hughes Evans	<a href="mailto:kristen@susches.org">kristen@susches.org</a>	(804) 544-3457	• Agricultural Conservation
Liz Feinberg	<a href="mailto:liz.feinberg63@gmail.com">liz.feinberg63@gmail.com</a>	(610) 212-2345	• All Sectors
Katie Ombalski	<a href="mailto:katie@woodswaters.com">katie@woodswaters.com</a>	(814) 574-7281	• Agricultural Conservation • Habitat Restoration

For issues or assistance with our online Easygrants system, please contact:

Easygrants Helpdesk

Email: [Easygrants@nfwf.org](mailto:Easygrants@nfwf.org)

Voicemail: 202-595-2497

Hours: 9:00 am to 5:00 pm ET, Monday-Friday.

Include: Your name, proposal ID #, e-mail address, phone number, program to which you are applying, and a description of the issue.



NFWF



NFWF

Chesapeake Bay Stewardship Fund



## Appendix A

### Eligible Practices for the PA-MEB Program

CBP Practice Name (Practice Credit Duration)	Definition	Other Common Practice Names and Standards
<p><b>Tillage Management</b> (Annual, 1 year)</p>	<p>Conservation tillage involves the planting, growing and harvesting of crops with minimal disturbance to the soil. Includes:</p> <ul style="list-style-type: none"> <li>• <b>Low Residue Tillage:</b> Maintains 15 to 29 percent crop residue coverage immediately after planting</li> <li>• <b>Conservation Tillage:</b> maintains 30 to 59 percent crop residue coverage immediately after planting</li> <li>• <b>High Residue, Minimum Soil Disturbance Tillage:</b> Maintains at least 60 percent crop residue coverage immediately after planting</li> </ul>	<ul style="list-style-type: none"> <li>• Residue and Tillage Management, No Till (NRCS 329)</li> <li>• Residue and Tillage Management, Reduced Till (NRCS 345)</li> </ul>
<p><b>Tree Planting</b> (10 years)</p>	<p>Any trees planted on agricultural land, except those used to establish riparian forest buffers, targeting lands that are highly erodible or identified as critical resource areas.</p>	<ul style="list-style-type: none"> <li>• Windbreak/shelter establishment (NRCS 380)</li> <li>• Tree/Shrub Establishment (NRCS 612)</li> <li>• Tree Planting (FSA CP3)</li> <li>• Hardwood Tree Planting (FSA CP3A)</li> </ul>
<p><b>Wetland Restoration</b> (15 years)</p>	<p>Includes any of the following:</p> <ul style="list-style-type: none"> <li>• <b>Wetland Restoration (re-establishment):</b> The manipulation of the physical, chemical, or biological characteristics of a site with the goal of returning natural/historic functions to a former wetland.</li> <li>• <b>Wetland Rehabilitation:</b> The manipulation of the physical, chemical, or biological characteristics of a site with the goal of repairing natural/historic functions to a degraded wetland.</li> <li>• <b>Wetland Enhancement:</b> The manipulation of the physical, chemical, or biological characteristics of a wetland to heighten, intensify, or improve a specific function(s).</li> <li>• <b>Wetland Creation (establishment):</b> The manipulation of the physical, chemical, or biological characteristics present to develop a wetland that did not previously exist at a site.</li> </ul>	<ul style="list-style-type: none"> <li>• Wetland restoration (NRCS 657);</li> <li>• CRP or CREP wetland restoration (CP23) and wetland restoration, non-floodplain (CP23A)</li> </ul>
<p><b>Prescribed Grazing</b> (10 years)</p>	<p>Pasture management and grazing techniques to improve the quality and quantity of the forages grown on pastures and reduce the impact of animal travel lanes, animal concentration areas or other degraded areas. Prescribed grazing systems must maintain a vegetative cover of 60% or greater.</p>	<ul style="list-style-type: none"> <li>• Managed intensive grazing; Prescribed grazing (NRCS 528 or 528A)</li> </ul>



NFWF



NFWF

Chesapeake Bay Stewardship Fund



Chesapeake Bay Program  
Science. Restoration. Partnership.

<p><b>Manure Incorporation (Annual, 1 year)</b></p>	<p>The mixing of dry, semi-dry, or liquid organic nutrient sources (including manures, biosolids, and compost) into the soil profile within a specified time period from application by a range of field operations. Includes:</p> <ul style="list-style-type: none"> <li>• <b>High disturbance incorporation:</b> Provides the highest degree of mixing of organic nutrient sources into the root zone, but effectively eliminates the erosion control benefits of conservation tillage. Incorporation plus additional field operations retain &lt;30% of residue cover at planting.</li> <li>• <b>Low disturbance incorporation:</b> leaves greater quantities of organic nutrient sources on the soil surface, but maintains most of the benefits of conservation tillage. Incorporation plus additional field operations retains at least 30 % of residue cover at planting.</li> </ul>	<p>N/A</p>
<p><b>Manure Injection (Annual, 1 year)</b></p>	<p>A specialized category of placement in which organic nutrient sources (including manures, biosolids, and composted materials) are mechanically applied into the root zone with surface soil closure at the time of application. Total soil surface disturbance for injection plus planting and any other field operations should be less than 40%.</p>	<p>N/A</p>
<p><b>Manure Transport (Annual, 1 year)</b></p>	<p>Transport of excess manure in or out of a county. Manure may be of any type – poultry, dairy, or any animal categories. Movement within the same county should not be included.</p>	<p>N/A</p>
<p><b>Barnyard Runoff Control (10 years)</b></p>	<p>Includes the installation of practices to control runoff from barnyard areas. This includes practices such as roof runoff control, diversion of clean water from entering the barnyard and control of runoff from barnyard areas.</p>	<ul style="list-style-type: none"> <li>• Roof runoff structure (NRCS 558)</li> <li>• Diversion (NRCS 362)</li> <li>• Stormwater Runoff Control (NRCS 570)</li> <li>• Trails and Walkways (NRCS 575)</li> </ul>
<p><b>Loafing Lot Management (10 years)</b></p>	<p>The stabilization of areas frequently and intensively used by people, animals or vehicles by establishing vegetative cover, surfacing with suitable materials, and/or installing needed structures. This does not include poultry pad installation.</p>	<p>N/A</p>
<p><b>Alternative Crops (10 years)</b></p>	<p>Accounts for those crops that are planted and managed as permanent, such as warm season grasses, to sequester carbon in the soil</p>	<p>N/A</p>
<p><b>Retirement of Highly Erodible Land (10 years)</b></p>	<p>Agricultural land retirement takes marginal and highly erosive cropland out of production by planting permanent vegetative cover such as shrubs, grasses and/or trees.</p>	<ul style="list-style-type: none"> <li>• Critical area planting (NRCS 342);</li> <li>• Conservation cover (NRCS 327);</li> </ul>



NFWF



NFWF

Chesapeake Bay Stewardship Fund



<p><b>Cover Crops –Traditional (Annual, 1 year)</b></p>	<p>A short-term crop grown after the main cropping season to reduce nutrient losses to ground and surface water by sequestering nutrients and may not be harvested in the spring. Includes:</p> <ul style="list-style-type: none"> <li>• <b>Traditional cover crops:</b> This type of cover crop may not receive nutrients in the fall.</li> <li>• <b>Traditional cover crops wit fall nutrient application:</b> This type of cover crop is planted upon cropland where manure is applied following the harvest of a summer crop and prior to cover crop planting.</li> </ul>	<ul style="list-style-type: none"> <li>• Cover Crop (NRCS 340)</li> </ul>
<p><b>Cover Crops – Commodity (Annual, 1 year)</b></p>	<p>A winter cereal crop planted for harvest in the spring which does not receive nutrient applications in the fall. Any winter cereal crop which did receive applications in the fall is not eligible for nutrient reductions.</p>	<p>N/A</p>
<p><b>Forest and Grass Buffers (10 years)</b></p>	<p>Linear vegetated areas that help filter nutrients, sediments and other pollutants from runoff as well as remove nutrients from groundwater. Includes:</p> <ul style="list-style-type: none"> <li>• <b>Forest Buffer:</b> Wooded buffer at least 35’ wide, with recommendation for 100’</li> <li>• <b>Grass Buffer:</b> Grass or other non-woody vegetative buffer at least 35’ wide, with recommendation for 100’</li> </ul>	<ul style="list-style-type: none"> <li>• Riparian Forest Buffer (NRCS 391)</li> <li>• Riparian Buffer (FSA CP22)</li> <li>• Riparian Herbaceous Cover (NRCS 390)</li> <li>• Filter Strip (NRCS 393)</li> <li>• Filter Strip (FSA CP21)</li> <li>• Field Border (NRCS 386)</li> <li>• Grass Waterway (NRCS 412)</li> <li>• Grass Waterway, Noneasement (FSA CP8A)</li> </ul>
<p><b>Forest and Grass Buffers with Stream Exclusion Fencing (10 years)</b></p>	<p>When buffers are implemented, pasture exclusion fencing is installed to prevent livestock from grazing and trampling the buffer or entering the stream. May include supporting practices like the use of alternative drinking water sources, such as permanent or portable livestock water troughs placed away from the stream corridor.</p>	<ul style="list-style-type: none"> <li>• See <b>Forest and Grass Buffers</b></li> </ul>
<p><b>Core Nutrient Management – Nitrogen (Annual, 1 year)</b></p>	<p>The implementation of a site-specific combination of nutrient source, rate, timing, and placement into a strategy that seeks to optimize agronomic and environmentally efficient utilization of nitrogen (N).</p>	
<p><b>Supplemental Nutrient Management – N Rate (Annual, 1 year)</b></p>	<p>Applications of nitrogen are made in accordance with all elements of the <b>Nitrogen Core Nutrient Management</b> practice, and one or more of the following practices are implemented resulting in a reduction in application rate of nitrogen:</p> <ul style="list-style-type: none"> <li>• Nitrogen application rate made at less than land-grant university recommendations.</li> <li>• Nitrogen applications split across the growing season, resulting in lower-than-planned applications.</li> <li>• Nitrogen applications are made using variable rate goals, resulting in lower-than-planned applications.</li> </ul>	<ul style="list-style-type: none"> <li>• Nutrient management (NRCS 590)*</li> </ul> <p>*Acres of nutrient management cost-shared under the NRCS 590 or enhanced 590 standards do not automatically fulfill the Core or Supplemental NM definitions. However, partners can verify how many of the acres meet which Core and/or Supplemental NM definitions.</p>
<p><b>Supplemental Nutrient Management – N Placement (Annual, 1 year)</b></p>	<p>Applications of nitrogen are made in accordance with all elements of the <b>Nitrogen Core Nutrient Management</b> practice, and one or more of the following practices are implemented resulting in better placement and utilization of nitrogen:</p>	





NFWF



NFWF

Chesapeake Bay Stewardship Fund



Chesapeake Bay Program  
Science. Restoration. Partnership.

	<ul style="list-style-type: none"> <li>• Applications of inorganic nitrogen are injected into the subsurface or incorporated into the soil.</li> <li>• Applications of nitrogen are made with setbacks from surface water features.</li> </ul>	
<p><b>Supplemental Nutrient Management – N Timing (Annual, 1 year)</b></p>	<p>Applications of nitrogen are made in accordance to all elements of the <b>Nitrogen Core Nutrient Management</b> practice, and are split across the growing season into multiple applications to increase utilization of nitrogen.</p>	
<p><b>Soil and Water Conservation Plans (Annual, 1 year)</b></p>	<p>Farm conservation plans that involve a combination of agronomic, management and engineered practices that protect and improve soil productivity and water quality and prevent deterioration of natural resources on all or part of a farm. Plans must meet applicable NRCS technical standards.</p>	<p>N/A</p>



NFWF



NFWF

Chesapeake Bay Stewardship Fund



Chesapeake Bay Program  
Science. Restoration. Partnership.

**APPENDIX B  
LANDOWNER – GRANTEE AGREEMENT**

This Agreement, made on \_\_\_\_\_ (date), by \_\_\_\_\_

(Landowner(s)), residing at \_\_\_\_\_

(street address), \_\_\_\_\_ (city), PA \_\_\_\_\_

(ZIP), and \_\_\_\_\_ (Grantee).

**Project Description:**

\_\_\_\_\_  
\_\_\_\_\_  
\_\_\_\_\_

**The Project is located at:**

\_\_\_\_\_  
\_\_\_\_\_  
\_\_\_\_\_

Latitude: \_\_\_\_\_ Longitude: \_\_\_\_\_

**Section 1 – Agreement Provisions**

- A. In consideration of the benefits that incur from the investment in the property, and/or monies received, the Grantee and the undersigned Landowner agree to comply with the terms set forth in this Agreement.
- B. Landowner represents and agrees that he/she is the sole owner of the real property on which the Project is to be performed, or has secured a sufficient property interest, including any easements or right-of-ways, necessary to grant access for the completion and maintenance of the project.
  - 1. Landowner agrees that the Grantee, its employees, agents and contractors shall have the right to enter upon the premises to perform the work described the "Project Description" provided above. The right to enter shall also include periodic monitoring visits for the life of this Agreement.
  - 2. By offering the premises for implementation of this project, Landowner agrees to allow access, design preparation and implementation and repair of the Project for the duration of construction and for the time period identified in Section 1, Paragraph B (11) of this Agreement.



NFWF



NFWF

Chesapeake Bay Stewardship Fund



Chesapeake Bay Program  
Science. Restoration. Partnership.

3. Grantee agrees that the all nutrient and sediment load reduction practices (“practices”) implemented under this Agreement shall be performed according to the *(Check all that apply)*:
  - The NRCS Pennsylvania Field Office Technical Guide
  - The Guidelines for Natural Stream Channel Design in Pennsylvania
  - The USDA NRCS National Engineering Handbook
  - A Handbook for Constructed Wetlands, Volume 4, Coalmine Drainage
  - The Stormwater Best Management Practices Manual
  - Plans developed by or certified by a Registered Professional Engineer and approved by PA Department of Environmental Protection
  - Manure Management or Nutrient Management plan developed for the operation
4. Practices shall be maintained pursuant to Section 2, Paragraph B of this Agreement.
5. The  Landowner  Grantee shall be responsible for adherence to the standards set forth in Section 2, Paragraph B and shall not act in any manner inconsistent with the terms of this Agreement.
6. The  Landowner  Grantee agrees not to destroy, alter or modify the practices, except to perform needed repairs, for the period covered by this Agreement, nor to undertake any action on land under the Landowner's control which tends to defeat the purposes of this Agreement.
7. The Landowner and Grantee recognize and release all rights, claims, title or ownership to any marketable nutrient reduction credits toward nutrient effluent limits that are generated as a result of the project for the time period covered by this Agreement.
8. The Landowner and Grantee recognize and release all rights, claims, title or ownership to the aquatic resource compensation credits, including but not limited to wetland, waterway, aquatic habitat, floodplain or riparian credits, in perpetuity, that are generated as a result of the project for the time period covered by this Agreement.
9. Landowner agrees to refund all or a portion of the value of the practices installed, as determined by the Grantee, if before the expiration of the term of this Agreement, the Landowner (a) destroys, alters or modifies the practices installed, or (b) voluntarily relinquishes control or title to the land on which the practices have been established, and the new landowner and/or operator of the land does not agree to maintain the practices for the remainder of the term of this Agreement. If the new landowner agrees to assume Landowner's obligations and to maintain the practices for the remainder of the term of this Agreement, then a new Landowner-Grantee Agreement shall be executed by the new landowner.
10. This Agreement shall be binding on the parties, their heirs, legal representatives, and assigns.
11. The term of this Agreement shall be for the duration of Project construction and a period of 10 years thereafter.



NFWF



NFWF

Chesapeake Bay Stewardship Fund



**Section 2 – Additional Agreement Provisions**

A. Tenant Provision (*Complete as necessary*)

“Landowner” is a Tenant under a \_\_\_\_\_ (*term of lease*) \_\_\_\_\_ (*oral/written*)

Lease agreement effective \_\_\_\_\_ (*date*), with \_\_\_\_\_

(*Landlord name*) as Landlord, covering property located at \_\_\_\_\_

(*Address*). Landowner enters this Agreement subject to the superior rights of the landlord in the Premises,

and for a term subject to the duration of Landowner's leasehold interest.

B. Operation, Maintenance and Repair Plan (To be attached, as applicable)



**Section 3 – Agreement Signatures**

\_\_\_\_\_  
(Landowner Signature)

\_\_\_\_\_  
(Date)

\_\_\_\_\_  
(Landowner Name Please Print)

\_\_\_\_\_  
(Date)

\_\_\_\_\_  
(Landowner Signature)

\_\_\_\_\_  
(Date)

\_\_\_\_\_  
(Landowner Name Please Print)

\_\_\_\_\_  
(Date)

\_\_\_\_\_  
(Grantee Representative Signature)  
Must be an officer of the organization

\_\_\_\_\_  
(Date)

\_\_\_\_\_  
(Grantee Representative Please Print)

\_\_\_\_\_  
(Date)



## OPERATION, MAINTENANCE AND REPAIR PLAN

Proper operation and maintenance of nutrient and sediment load reduction practices ("practices") is critical for their success and longevity. The goal of this project is the establishment of for improvement of water quality.

1) Components of the Project (List all practices being installed within this project):

Practice	Location Summary	Practice Extent

2) Parties agree to perform all Maintenance Tasks as described in the chart at the end of this document.

3) Allowed activities:

- 
- 
- 
- 

Prohibited activities:

- 
- 
- 

4) The  Landowner(s)  Grantee shall be considered to be in breach of this Agreement if he/she does not maintain and repair the project in compliance with this plan or willfully neglects any other terms of this agreement.

5) The  Landowner(s)  Grantee agrees to comply with all Federal, State, local laws, rules and regulations. This would include noxious weed control.

6) The  Landowner(s)  Grantee shall be responsible for all normal, routine maintenance and normal, routine repair of the site and project.

7) Other Special Conditions:

- 
- 
- 
-

**Maintenance Tasks**

<b>Practice</b>	
<b>Maintenance required</b>	
<b>Schedule</b>	
<b>Responsible Party</b>	
<b>Practice</b>	
<b>Maintenance required</b>	
<b>Schedule</b>	
<b>Responsible Party</b>	
<b>Practice</b>	
<b>Maintenance required</b>	
<b>Schedule</b>	
<b>Responsible Party</b>	