



NFWF



Chesapeake Bay Program
Science. Restoration. Partnership.

2021 Pennsylvania Most Effective Basins Grants Program Applicant Webinar

Agenda

1. Webinar Instructions
2. Overview of 2021 PA Most Effective Basins Grants Program
3. How to Submit a Proposal Using Easygrants



Jake Reilly,
Program Director



Stephanie Heidbreder,
Program Manager



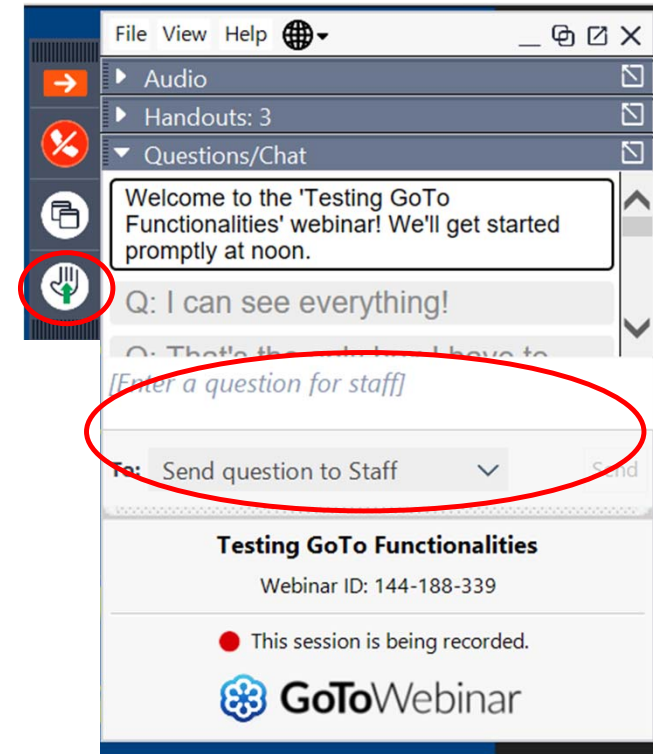
Nicole Thompson,
Program Coordinator



Webinar Instructions

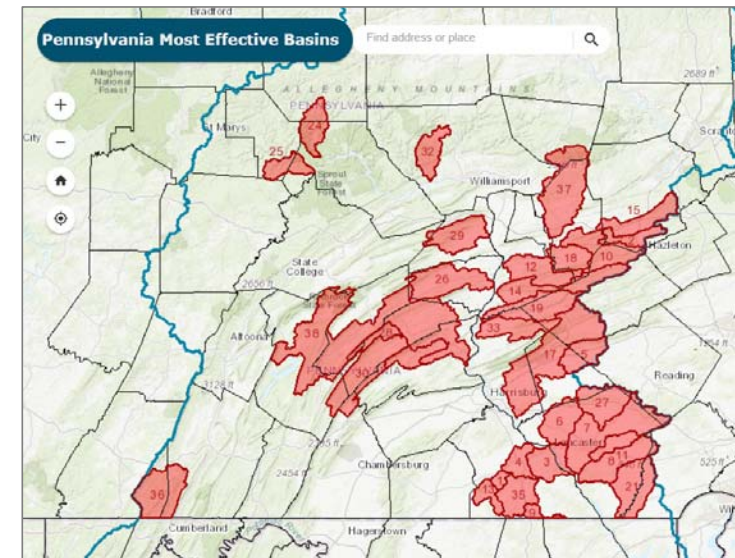
- To improve sound quality, all participants will be muted for the duration of the webinar. To ask a question:
 1. Enter your query where it says “Enter a question for staff” and click send. Nicole will type a response or read your question aloud when we pause for Q&A. OR
 2. Write it down and contact us after the webinar.
- We may ask you to raise your “hand” in the webinar dialogue box to confirm participants can hear us.
- If you experience a technical glitch, please type it into the question box, since we can’t hear you. (We may not know about the glitch unless you say something!)

***The webinar will be available for download within 48 hrs
at NFWF.org/Chesapeake***



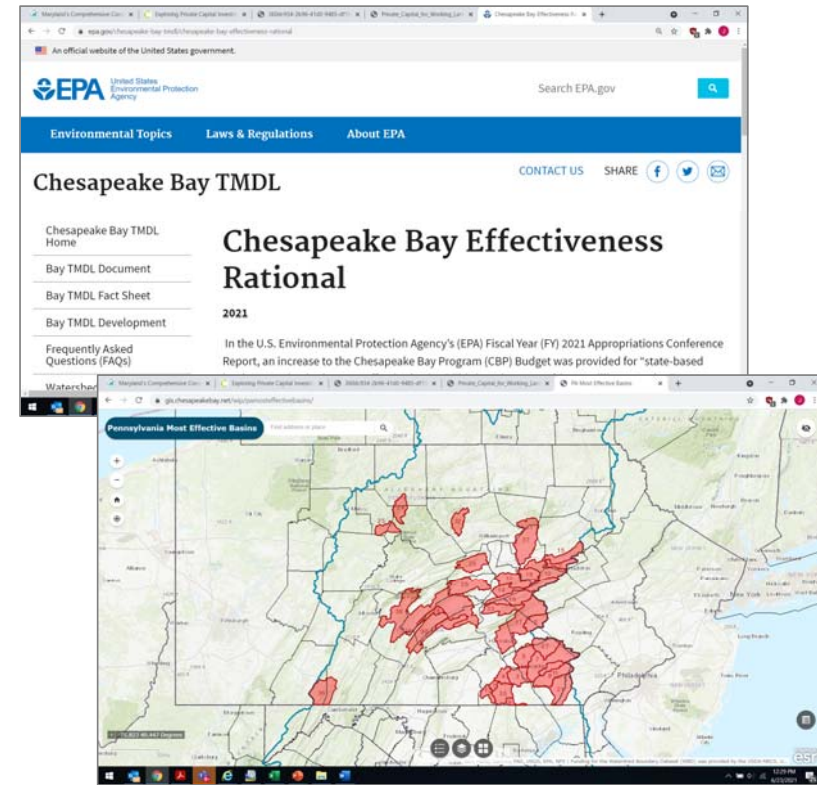
PA MEB Program Overview

Program Priority:	Rapid implementation of cost-effective agricultural nitrogen load reductions
Geographic Focus:	Selected basins in PA's CB watershed
Applicant Eligibility:	Conservation districts, NRCS-approved Technical Service Providers, county action plan coordinators, local gov't*, nonprofits*
Landowner/Operator Eligibility:	Individuals and entities with ownership or management control of an agricultural operation
Evaluation Criteria:	<ol style="list-style-type: none"> 1. Cost-effectiveness for ag N 2. Readiness to implement 3. Co-benefits
Grant Size:	Up to \$250,000 per award
Matching Requirements:	N/A, but encouraged
Project Duration:	18-24 months (ASAP!)



Geographic Focus

- FY2020 EPA Appropriations: Increase in the CBP budget for “state-based implementation in the most effective basins”
- MEBs subsequently determined by EPA based on both cost effectiveness and load effectiveness
 - Cost effectiveness: emphasis on agricultural nitrogen load reductions (e.g. \$/lb)
 - Load effectiveness: considers effect on DO based on land to water, delivery, and DO response
- Implementation must occur **wholly within** defined basins of PA’s CB watershed



Applicant and Landowner/Operator Eligibility

Eligible Applicants: Conservation districts, NRCS-certified TSPs, CAP coordination entities, local governments*, and 501(c)(3) nonprofit organizations*

- Local gov't and nonprofits must provide letters of support from affected conservation district and CAP coordinators
- Awards may include actual costs only; recipients may not apply loaded rates or realize profit from an award of federal financial assistance funds

Eligible Landowners/Operators: Individuals and entities with ownership or management control of an agricultural operation, per PA statute, located in MEB



Eligible Practices

- Identified by EPA based on the demonstrated ability to yield low-cost reductions in agricultural nitrogen loading
- Includes both annual (i.e., “management”) and structural (i.e., “engineered”) practices
 - Tillage Management
 - Tree Planting
 - Wetland Restoration
 - Prescribed Grazing
 - Manure Incorporation
 - Manure Injection
 - Manure Transport
 - Barnyard Runoff Control
 - Loafing Lot Management
 - Alternative Crops
 - Retirement of Highly Erodible Land
 - Cover Crops – Traditional
 - Cover Crops – Commodity
 - Forest and Grass Buffers
 - Forest and Grass Buffers w/ Exclusion
 - Core Nutrient Management – Nitrogen
 - Supplemental NM – N Rate
 - Supplemental NM – N Placement
 - Supplemental NM – N Timing
 - Soil and Water Conservation Plans





Chesapeake Bay Stewardship Fund



Evaluation Criteria #1 – Cost-Effectiveness

- NFWF will utilize **cost-effectiveness for ag N load reduction** as the principal program evaluation criteria
- Calculated as the **total project funding request** divided by **total N load reduction potential** from the project
- Total N load reduction potential considers **annual N load reduction** from proposed practices and **proposed timeframes** for sustaining implementation/performance
- CBP-approved **practice credit durations** used as default timeframes (see *Appendix A*), with option for applicants to extend via innovative approaches

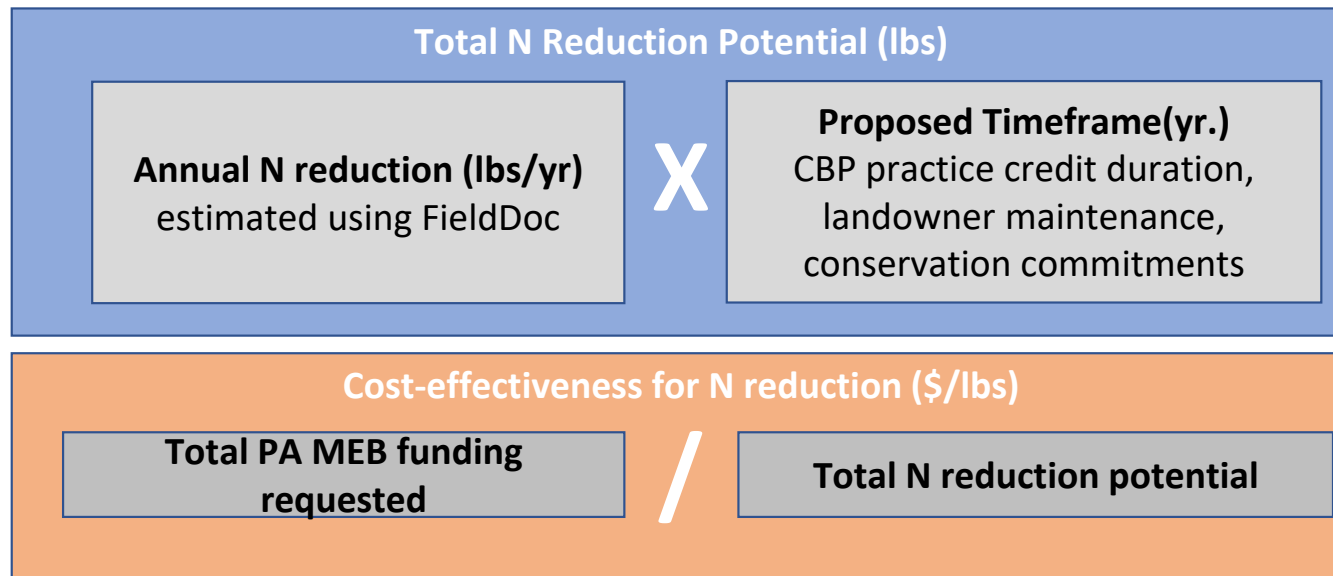



Appendix A
Eligible Practices for the PA-MEB Program

CBP Practice Name (Practice Credit Duration)	Definition	Other Common Practice Names and Standards
Tillage Management (Annual, 1 year)	Conservation tillage involves the planting, growing and harvesting of crops with minimal disturbance to the soil. Includes: <ul style="list-style-type: none"> Low Residue Tillage: Maintains 55 to 75 percent crop residue coverage immediately after planting Conservation Tillage: maintains 20 to 35 percent crop residue coverage immediately after planting High Residue, Minimum Soil Disturbance Tillage: Maintains at least 60 percent crop residue coverage immediately after planting 	<ul style="list-style-type: none"> Residue and Tillage Management, no till (NRCS 524) Residue and Tillage Management, Reduced Till (NRCS 345)
Tree Planting (10 years)	Any trees planted on agricultural land, except those used to establish riparian forest buffers, targeting lands that are highly erodible or identified as critical resource areas.	<ul style="list-style-type: none"> Windbreak/Shelter establishment (NRCS 580) Tree/Shrub Establishment (NRCS 632) Tree Planting (FSA QP3) Shrubland Tree Planting (FSA QP5A)
Wetland restoration (25 years)	Includes any of the following: <ul style="list-style-type: none"> Wetland restoration (re-establishment): The manipulation of the physical, chemical, or biological characteristics of a site with the goal of returning natural/historic functions to a former wetland. Wetland rehabilitation: The manipulation of the physical, chemical, or biological characteristics of a site with the goal of repairing natural/historic functions to a degraded wetland. Wetland enhancement: The manipulation of the physical, chemical, or biological characteristics of a wetland to heighten, intensify, or improve a specific function(s). Wetland creation (establishment): The manipulation of the physical, chemical, or biological characteristics present to develop a wetland that did not previously exist at a site. 	<ul style="list-style-type: none"> Wetland restoration (NRCS 657) CBP or CBP wetland restoration (QP23) and wetland restoration, non-floodplain (QP23A)
Prescribed Grazing (10 years)	Pasture management and grazing techniques to improve the quality and quantity of the forages grown on pastures and reduce the impact of animal travel lanes, animal concentration areas or other degraded areas. Prescribed grazing systems must maintain a vegetative cover of 60% or greater.	<ul style="list-style-type: none"> Managed intensive grazing: Prescribed grazing (NRCS 528 or 529A)

10

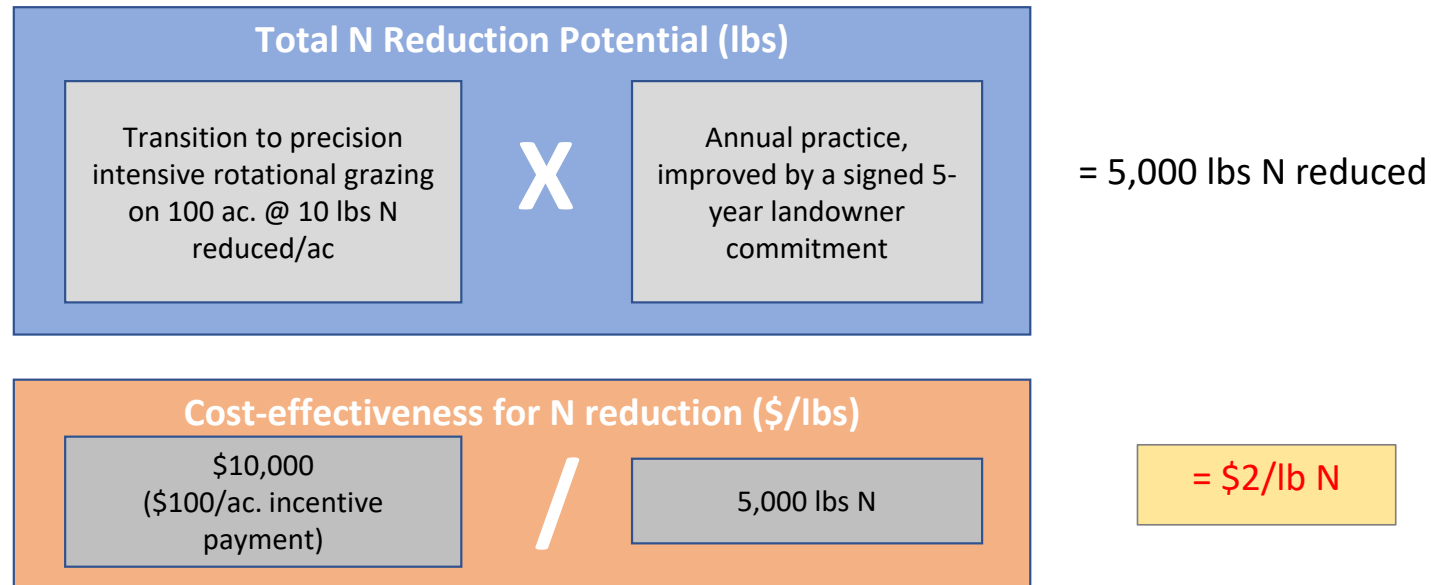
Evaluation Criteria #1 – Cost-Effectiveness



Chesapeake Bay Stewardship Fund



Evaluation Criteria #1 – Cost-Effectiveness



Evaluation Criteria #2 – Readiness

- NFWF is seeking projects that can move quickly into implementation and delivery of load reduction benefits
- NFWF will consider the status of necessary planning, design, and permitting required to proceed with implementation
- The need for significant, additional technical assistance activities prior to implementation may impact assessment of readiness



Evaluation Criteria #3 – Co-Benefits

- NFWF and program partners are seeking proposals that can also:
 1. Benefit other goals and outcomes of the [Watershed Agreement](#) and NFWF's [Chesapeake Bay Business Plan](#)
 2. Deliver operational and/or financial benefits (e.g. reducing operating costs, simplifying or streamlining farm management processes) for cooperators
- See additional resources on the multiple benefits of eligible practices, developed by CBP in support of Phase III WIP planning



Associated Easygrants Metrics

Applicable Metrics	Metric Description/Instructions
CBSF - BMP implementation for nutrient or sediment reduction - Lbs N avoided (annually)*	Please use FieldDoc to develop estimates of the total nitrogen load reduction potential your proposed project. Enter FieldDoc-generated pollutant load reduction totals in this field then upload your FieldDoc Project Summary in the "Uploads" section.
CBSF - BMP implementation for nutrient or sediment reduction - Acres with BMPs	Enter the total number of acres under agricultural or non-urban BMPs to reduce nutrient or sediment loading. Do not double-count individual acres which have multiple BMPs.
CBSF - Riparian restoration - Miles restored	Enter the number miles of riparian habitat restored through the implementation of forest or grass buffers that are at least 35 feet wide. If you are implementing livestock exclusion, report associated outcomes instead under the "CBSF - BMP implementation for livestock exclusion -- miles of fencing installed" metric.
CBSF - BMP implementation for livestock fencing - Miles of fencing installed	Enter the number of miles of livestock exclusion installed. Assume activities include exclusion fencing and a 35-foot forest or grass buffer, unless otherwise noted.
CBSF - Floodplain restoration - Acres restored	Enter the number of acres of floodplain restored for nutrient and sediment load reduction, consistent with qualifying conditions and restoration protocols established by the Chesapeake Bay Program. Also report any associated linear stream restoration outcomes through the "CBSF - Stream restoration – Miles restored" metric.
CBSF - Wetland restoration - Acres restored	Enter the number of acres of wetland habitat restored, created, or enhanced.
CBSF - Conservation easements - Acres protected under easement	Enter the number of acres protected under long-term easement (permanent or >30-yr).
CBSF - Land, wetland restoration - Number of trees planted	Enter the number of trees planted for all non-urban projects/practices.



Ineligible Use of Grant Funds

- X** Procurement of equipment, services, or systems that uses telecom equipment or services produced by Huawei Technologies Company or ZTE Corporation
- X** Political advocacy, fundraising, lobbying, litigation, terrorist activities or Foreign Corrupt Practices Act violations.
- X** Direct land or easement acquisition
- X** Operations under enforcement action by PA DEP, SCC, or U.S. EPA are ineligible for program funding



Other Cost Considerations

Equipment: Applicants are encouraged to rent equipment where possible and cost-effective or use matching funds to make those purchases.

Grantees may only use grant funds for indirect costs if:

- 1) The grantee organization has a federally-approved indirect rate; OR
- 2) They can take the de minimus 10% indirect cost rate without an approved NICRA

Direct administrative expenses are allowed.



Additional Considerations

- Awardees must complete signed Landowner-Grantee Agreements for all proposed landowners/operators prior to executing grant contracts with NFWF (*see Appendix B*)
- Match, while not required, is encouraged. Applicants are encouraged to report on both traditional non-federal match, as well as “leverage” from complementary federal programs
- Unless otherwise noted, all conservation and restoration practices implemented through the PA-MEB program must conform to established and recognized standards and practices specifications



Additional Considerations

- All **applicants with active grants from NFWF must be in good standing** in terms of reporting requirements, expenditure of funds, and quality assurance (if required).
- Applicants must demonstrate awareness and the status of all permits required to comply with federal, state or local requirements.
- If projects involve significant environmental monitoring or data collection/generation, applicants may be asked to develop quality assurance documentation as part of their grant. Applicants should budget time and resources to complete this task if appropriate.
- When procuring goods and services, NFWF recipients must follow documented procurement procedures which reflect applicable laws and regulations.



Timeline for 2021 MEB Grants Program

RFP Released:	Wednesday, June 23rd
Applicant Webinar:	Wednesday, June 30th
FieldDoc Webinar:	Wednesday, July 7th
Proposals Due:	Friday, July 30th
Proposal Review:	August
Proposal Selection:	September
Award Notification:	October (estimated)



Chesapeake Bay Stewardship Fund



Quick Tips for Applicants

- ✓ Re-read the RFP. Call us if you're confused.
- ✓ Talk to people about your project idea. Listen to feedback.
- ✓ These are competitive grants. Your projects should have a “wow” factor.
- ✓ Be strategic first, opportunistic second.
- ✓ Submit your proposal **ON OR BEFORE July 30th**
- ✓ Note that NFWF staff will not be in the office at 11:59 pm on July 30th!



Chesapeake Bay Stewardship Fund



QUESTIONS?

(202) 857-0166 | www.nfwf.org/chesapeake

NFWF Chesapeake Staff:

Jake Reilly, Program Director

Jake.Reilly@nfwf.org

Nicole Thompson, Program Coordinator

Nicole.Thompson@nfwf.org

Stephanie Heidbreder, Program Manager

Stephanie.Heidbreder@nfwf.org

Easygrants Questions

Easygrants@nfwf.org

Field Liaison Contact	Email	Phone	Sector Expertise
Kristen Saacke Blunk	kristen@headwaters-llc.org	(814) 360-9766	• All Sectors
Kristen Hughes Evans	kristen@sustainablechesapeake.org	(415) 730-7503	• Agricultural Conservation
Elizabeth Feinberg	liz.feinberg63@gmail.com	(610) 212-2345	• All Sectors
Katie Ombalski	katie@woodswaters.com	(814) 574-7281	• Agricultural Conservation • Habitat Restoration



NFWF

Chesapeake Bay Stewardship Fund



Agenda

1. Webinar Instructions
2. Overview of 2021 PA Most Effective Basins Grants Program
- 3. How to Submit a Proposal Using Easygrants**



Jake Reilly,
Program Director



Stephanie Heidbreder,
Program Manager



Nicole Thompson,
Program Coordinator



How to submit a proposal

Step One: Create an Account



NFWF

Enter your login ID and password and click **Log In** below. If you have forgotten your password, click **Forgot your password?** below.
If you are a first time visitor to this system, click **Register here** below.

[Frequently Asked Questions](#)

Log In

[New User?](#)

Login ID / Email

Password

☒ Remember Me

[Forgot Password?](#)

Log In

For the optimal Easygrants experience, please:

- [Use a Supported Browser](#)
- [Enable Pop-ups](#)
- [Allow Cookies](#)
- [Only Use One Tab](#)
- [Get Adobe Reader](#)
- [Log Out and Close Browser for Security](#)

For Technical assistance, please contact us via [e-mail](#) or phone 202-595-2497.
[Download Adobe Reader](#)

Powered by [Easygrants](#) v9.5.0



Please Add a Phone Number!

- Once you have created your Easygrants log-in and or you log-in as an existing user, please visit review your contact details and make sure that you provide a phone number.



Chesapeake Bay Stewardship Fund



Budget Tips

- **Concise Budget Narrative must be included for every line item.**
- Budget should only include the grant amount requested from NFWF
- Must comply with [OMB's Uniform Guidance](#):
- Itemize all costs in appropriate budget categories.
- Avoid lumping costs i.e., All Materials and Supplies: \$10,000.
- Total Amount Requested in Project Information section must equal the Budget Grand Total in Budget section



Chesapeake Bay Stewardship Fund



Science. Restoration. Partnership.

Financial and Other Documents

All financial documentation must:

- Represent the same fiscal year period
- be the most recent financial information available and *less than* two years old

Further details on document requirements and for FAQs [here](#).




Chesapeake Bay Stewardship Fund



Science. Restoration. Partnership.

Let's try it...

**NFWF**

My Tasks - Claire Question - Home

My TasksMy GrantsProfileApply For Funding

Home

Change Password

FAQ

Log Out

To access a task below, [click the task name link in the Task column](#).
Peer Reviewers: To view the proposal you are reviewing please click the "Third Party Review" link. Please do not click View PDF, as it will open a copy of the review you are submitting and not the proposal.

Apply for FundingView All My Tasks

MyTasks

Easygrants ID	Primary Contact/PI	Task	Program Name	Funding Cycle Name	Status	Outcome	Due Date	
62195	Question, Claire	Full Proposal	Grants	Chesapeake Bay Small Watershed Grants Implementation 2018	Incomplete	Not Submitted	9/4/2018	View PDF

For Technical assistance, please contact us via [e-mail](#) or phone 202-595-2497.

[Download Adobe Reader](#)

Powered by [Easygrants™](#) v9.5.0

QUESTIONS?

(202) 857-0166 | www.nfwf.org/chesapeake

NFWF Chesapeake Staff:

Jake Reilly, Program Director

Jake.Reilly@nfwf.org

Nicole Thompson, Program Coordinator

Nicole.Thompson@nfwf.org

Stephanie Heidbreder, Program Manager

Stephanie.Heidbreder@nfwf.org

Easygrants Questions

Easygrants@nfwf.org

Field Liaison Contact	Email	Phone	Sector Expertise
Kristen Saacke Blunk	kristen@headwaters-llc.org	(814) 360-9766	• All Sectors
Kristen Hughes Evans	kristen@sustainablechesapeake.org	(415) 730-7503	• Agricultural Conservation
Elizabeth Feinberg	liz.feinberg63@gmail.com	(610) 212-2345	• All Sectors
Katie Ombalski	katie@woodswaters.com	(814) 574-7281	• Agricultural Conservation • Habitat Restoration



Chesapeake Bay Stewardship Fund

