

# 2022 Applicant Webinar

## Innovative Nutrient and Sediment Reduction Grants

*Accelerating the rate and scale of water quality improvements within the Chesapeake Bay watershed through the coordinated and collaborative efforts of sustainable, regional-scale partnerships in implementing proven water quality improvement practices more cost-effectively.*



NFWF



# Agenda

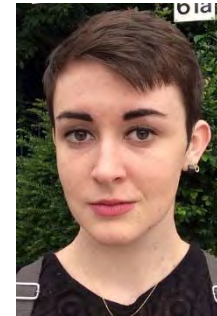
1. Webinar Instructions
2. Overview of Chesapeake Bay Stewardship Fund
3. Review of 2022 Innovative Nutrient and Sediment Reduction RFP
4. How to Submit a Proposal Using Easygrants



Jake Reilly,  
Program Director



Stephanie Heidbreder,  
Program Manager



Nicole Thompson,  
Program Coordinator



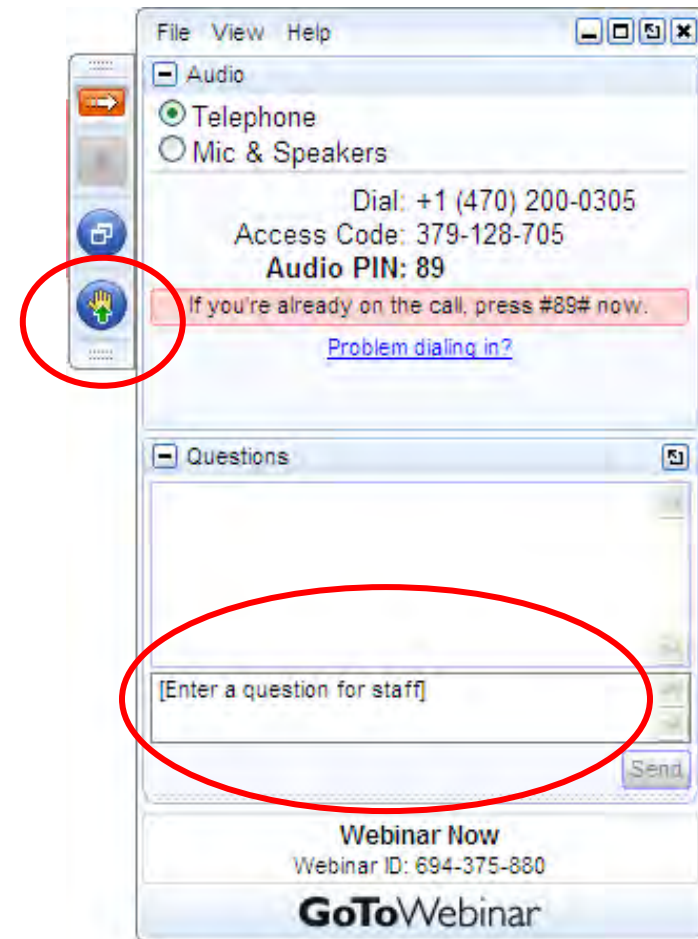
Chesapeake Bay Stewardship Fund



Chesapeake Bay Program  
Science. Restoration. Partnership.

# 1. Webinar Instructions

- To improve sound quality, all participants will be muted for the duration of the webinar. If you want to ask a question you have two options:
  - Enter your query where it says “Enter a question for staff” and click send. We will type a response or read your question aloud when we pause for Q&A.
  - Write it down and contact us after the webinar. We have a lot of material to cover, so you may prefer to have a more in-depth discussion later.
- We may ask you to raise your “hand” in the webinar dialogue box to confirm participants can hear us.
- If you experience a technical glitch, please type it into the question box, since we can’t hear you. (We may not know about the glitch unless you say something!)



***The webinar will be available for download within 48 hrs at [NFWF.org/Chesapeake](http://NFWF.org/Chesapeake)***



**NFWF**



Chesapeake Bay Stewardship Fund

Science. Restoration. Partnership.

# Agenda

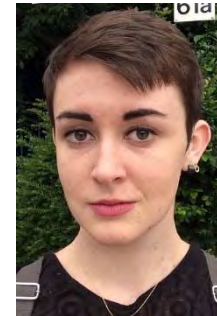
1. Webinar Instructions
- 2. Overview of Chesapeake Bay Stewardship Fund**
3. Review of 2022 Innovative Nutrient and Sediment Reduction RFP
4. How to Submit a Proposal Using Easygrants



Jake Reilly,  
Program Director



Stephanie Heidbreder,  
Program Manager



Nicole Thompson,  
Program Coordinator



Chesapeake Bay Stewardship Fund



## 2. Chesapeake Bay Stewardship Fund

### Purpose and History

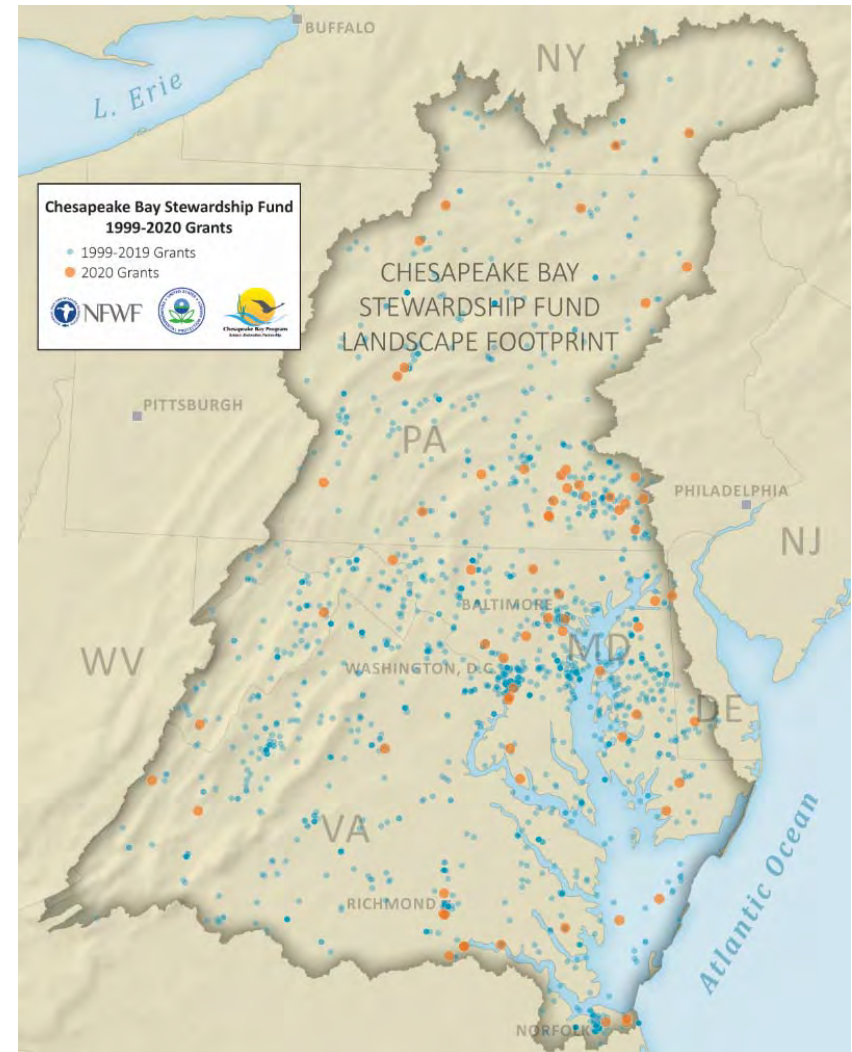
- Accelerate local restoration actions and spur innovation in watershed restoration
- Delivered in partnership with EPA and the Chesapeake Bay Program
- 1,200+ grants totaling roughly \$158M and leveraging \$238M in local matching funds

### Outcomes

- 25+ million pounds of nutrients pollution prevented
- 830,000+ acres of BMPs
- 40 acres of impervious surfaces removed
- 3 million+ community members engaged

### Chesapeake Bay Business Plan

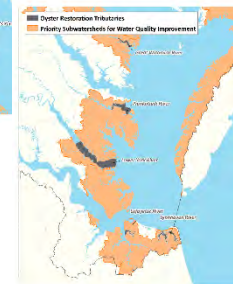
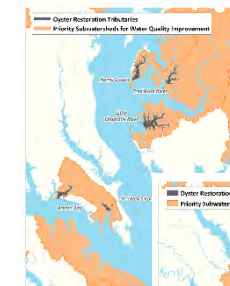
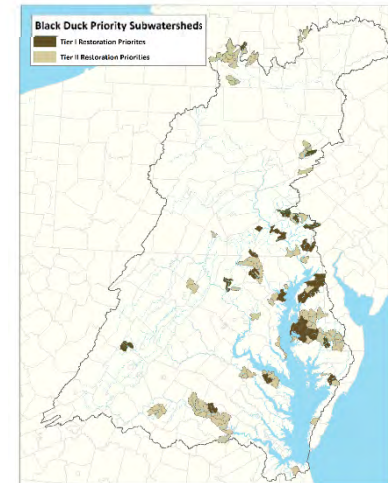
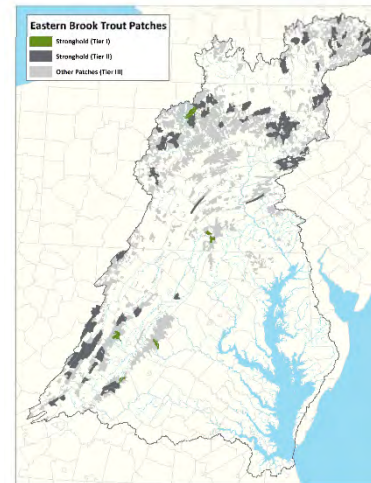
- Provides a concise blueprint of NFWF's targeted conservation outcomes for the Chesapeake Bay
- Articulates NFWF's measurable contributions to goals and outcomes of the Chesapeake Bay Program partnership



# 2. Chesapeake Bay Stewardship Fund

## Geographic Focus

- **Water Quality:** Priority subwatersheds with significant opportunity to reduce nutrient and sediment loading, specifically from agricultural and urban sources
- **Species and Habitat:** Areas where species-specific interventions can help to improve habitat and restore populations for:
  - **Eastern brook trout**
  - **Eastern oysters**
  - **American black duck**
  - **River herring**
- NFWF will continue to fund efforts outside of priority subwatersheds



Chesapeake Bay Stewardship Fund

Chesapeake Bay Program  
Science. Restoration. Partnership.

# Funding Partners



**Chesapeake Bay Program**  
*Science. Restoration. Partnership.*



**Altria**



# Agenda

1. Webinar Instructions
2. Overview of Chesapeake Bay Stewardship Fund
- 3. Review of 2022 Innovative Nutrient and Sediment Reduction RFP**
4. How to Submit a Proposal Using Easygrants



Jake Reilly,  
Program Director



Stephanie Heidbreder,  
Program Manager



Nicole Thompson,  
Program Coordinator



Chesapeake Bay Stewardship Fund





# 3. Review of 2022 INSR RFP

## Innovative Nutrient and Sediment Reduction Grants

**Outcome:** Implementation of water quality improvements through the collaborative efforts of sustainable, **regional-scale** partnerships with a shared focus on water quality restoration and protection

**Grant Size:** Between \$500,000 and \$1,000,000

**Matching Funds:** Non-federal matching contribution equal to the funding request

**Eligibility:** Non-profit organizations, state government agencies, local and municipal governments, Tribal governments and organizations, and educational institutions

**Project Duration:** ~3 years



Chesapeake Bay Stewardship Fund



Chesapeake Bay Program  
Science. Restoration. Partnership.

# 2022 NFWF Programs Cheat Sheet

Focus	Chesapeake Bay Innovative Nutrient and Sediment Reduction	Chesapeake Bay Small Watershed Grants – Implementation	Chesapeake Bay Small Watershed Grants – Planning
<b>Project Focus</b>	<b>Regional-scale programs, partnerships, and collaboratives</b> capable of scaling up water quality improvements	<b>On-the-ground actions</b> to protect and restore water quality, species, and habitats in the Bay watershed	Enhancing local capacity through <b>assessment, planning, design, and other technical assistance-</b> oriented activities
<b>Award Size</b>	\$500,000 – 1,000,000	\$50,000 – 500,000	Up to \$50,000
<b>Match Requirements</b>	1:1	One-third of grant request	None
<b>Eligible Applicants</b>	State agencies, academic institutions, local governments, nonprofits, tribes	Local governments, nonprofits, tribes	Local governments, nonprofits, tribes
<b>Geographic Focus</b>	Chesapeake Bay Watershed and priority subwatersheds	Chesapeake Bay Watershed and priority subwatersheds	Chesapeake Bay Watershed and priority subwatersheds
<b>Annual Program Timeline (est.)</b>	Sept. 2021 – RFP released Nov. 2021 – Proposals due March 2022 – Awards announced Summer – Grants issued	Feb. – RFP released Apr. – Proposals due Aug. – Awards announced Fall – Grants issued	Feb. – RFP released Apr. – Proposals due Aug. – Awards announced Fall – Grants issued

# Review of 2020 INSR RFP

Competitive funding will be awarded to partnership projects that simultaneously:

- (1) Cultivate the growth and enhancement of **existing** regional-scale partnerships with a shared focus on water quality restoration and protection; and
- (2) Measurably accelerate the geographic scale and/or rate of implementation for priority water quality improvement practices identified through the Chesapeake Bay TMDL and associated WIPs through enhanced collaboration, coordination, and integration of these partnerships.



Chesapeake Bay Stewardship Fund



Chesapeake Bay Program  
Science. Restoration. Partnership.

# Cultivating Partnership Growth and Enhancement

NFWF, in partnership with University of Virginia's Institute for Engagement and Negotiation, has identified four key areas for investment based on an extensive review of successful ecosystem restoration collaboratives.

Successful proposals will address these characteristics in describing their proposed project, work plan and collaborative structure:

- Building and Sustaining Motivation
- Establishing and Improving Effective Collaborative Processes
- Enhancing Core Capacities
- Promoting Continuous Evaluation



Chesapeake Bay Stewardship Fund



Chesapeake Bay Program  
Science. Restoration. Partnership.

# Cultivating Partnership Growth and Enhancement

- Efforts to enhance and expand the capacity and impact of **existing** partnerships for water quality restoration and protection
- Applications must document proposed changes in composition, structure, and/or function of networks and how those changes will specifically support accelerated water quality improvement



## Example activities include:

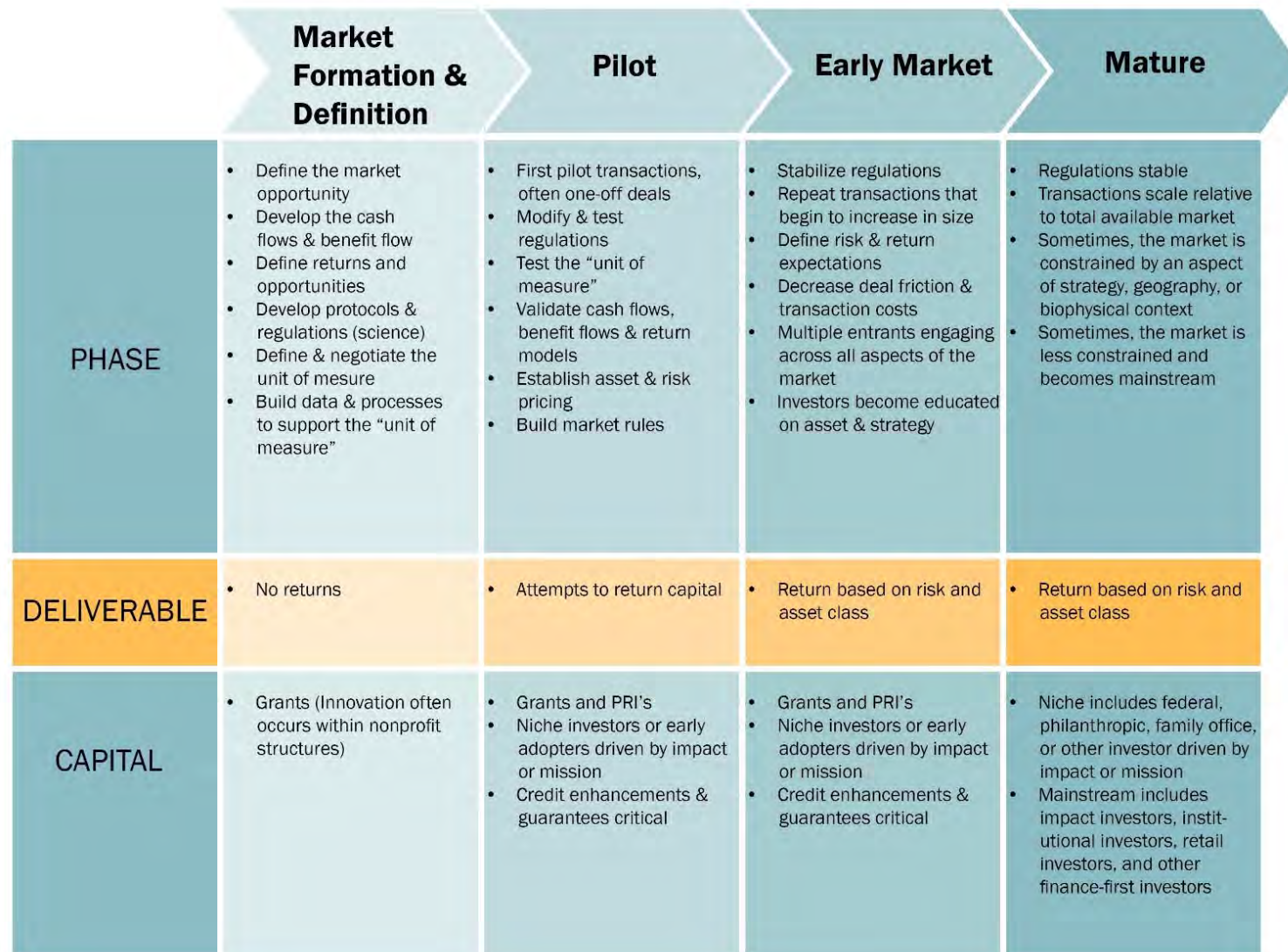
- Assessing partner capacities/existing programs with recommended improvements
- Developing and executing formal mechanisms for improved collaboration and integration
- Refining or adaptively managing collaborative strategic plans
- Improving internal communications, operations, and management
- Developing or enhancing cooperative programming

# Accelerating Water Quality Improvements

Specific strategies for consideration:

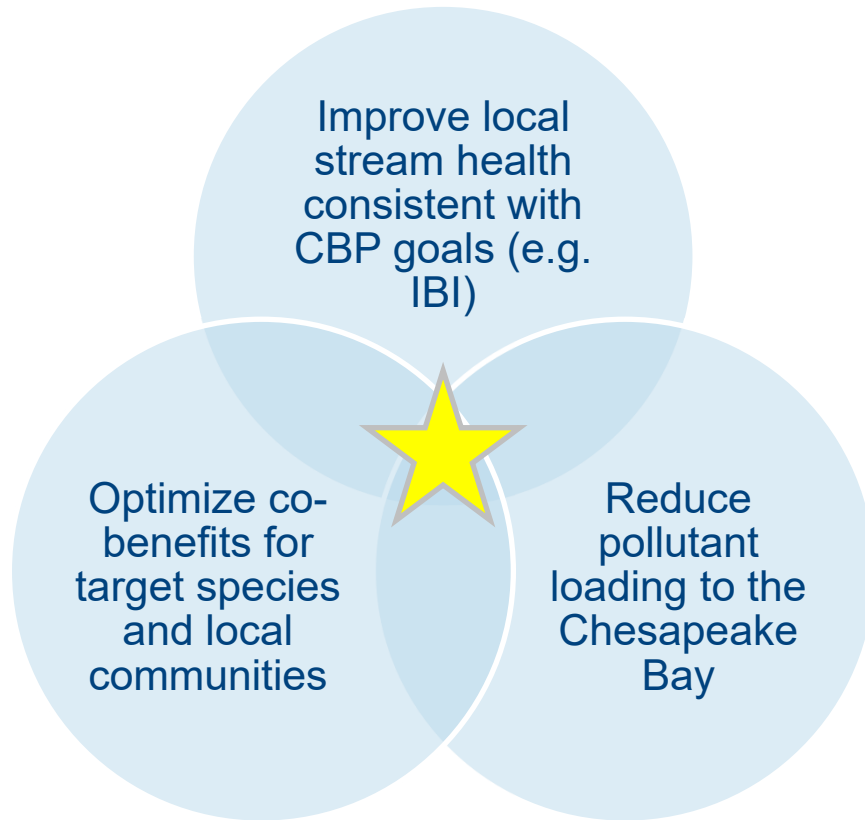
- **Managing upland agricultural runoff through farm-scale conservation systems and solutions** (e.g. soil health management systems, precision/decision agriculture, supply-chain or demand-driven approaches, and “whole farm” conservation systems)
- **Managing upland urban runoff through green stormwater infrastructure improvements (GSI)** (e.g. integrating GSI into capital planning, support for multi-municipality or county/subwatershed scale stormwater management partnerships, and use of community-based social marketing to improve outreach programs)
- **Restoring Riparian and Freshwater Habitats through forested buffers, floodplain and wetland reconnection, stream restoration and habitat Improvements** (e.g. establishment of buffers, livestock exclusion fencing and associated practices; reconnection of stream channels with floodplains and adjacent wetlands; stream restoration for erosion, nutrient and sediment reductions and habitat benefits)

# Conservation Finance and Market Development to Accelerate Water Quality Improvements



This framework was developed by Dave Chen, Principal and Chairman of Equilibrium Capital, with input from Susan Phinney Silver, Mission Investing Director of the David and Lucile Packard Foundation.

# Projects Incorporating Stream Restoration



To achieve these goals, NFWF supports a **watershed approach** to stream restoration that:

- Based on watershed/catchment-level assessment of key stressors
- Balances short, medium, and long-term goals for load reduction, functional improvement, and co-benefits
- Defines realistic project goals for reach-level stream function improvement
- Addresses stressors at their source
- Considers multiple design alternatives to identify optimal approach



# Projects Incorporating Stream Restoration

- Long-term, watershed-based approaches to improving stream biological function can – and do – work, and can be competitive proposals for funding
- Applicants for stream restoration projects creditable under the TMDL, consistent with CBP protocols, will need to demonstrate:
  - Realistic goals for improvement of specific stream functions
  - Watershed or catchment-level assessment of stressors, demonstrating efforts to address upland sources and stressors
  - Consideration of alternative design and restoration approaches to achieve functional improvements



Chesapeake Bay Stewardship Fund



Chesapeake Bay Program  
Science. Restoration. Partnership.

# Relevant NFWF Metrics and Outcomes

## Appendix A

### Applicable Metrics

#### Chesapeake Bay Innovative Nutrient and Sediment Reduction Grants Program

Strategy	Recommended Metric*	Metric Description/Instructions
Managing Agricultural and Urban Runoff (Required of all INSR applicants)	CBSF - BMP implementation for nutrient or sediment reduction - Lbs N/P/S avoided (annually)	Please use FieldDoc to develop estimates of the annual nitrogen, phosphorus, and/or sediment load reductions from your proposed project. Enter FieldDoc-generated pollutant load reduction totals in this field then upload your FieldDoc Project Summary in the "Uploads" section.
Managing Agricultural and Urban Runoff (select all that apply)	CBSF - BMP implementation for nutrient or sediment reduction - Acres with BMPs	Enter the total number of acres under agricultural or non-urban BMPs to reduce nutrient or sediment loading. Do not double-count individual acres which have multiple BMPs. If you're implementing load reduction practices on urban lands, report associated outcomes instead under the "CBSF - BMP implementation for stormwater runoff - Acres with BMPs" metric.
	CBSF - BMP implementation for stormwater runoff - Acres with BMPs	Enter total drainage area treated by stormwater BMPs. If you wish to also provide the extent of specific BMPs themselves (i.e. square feet of bioretention), please do so in the "Notes" section.
	CBSF - BMP implementation for stormwater runoff - Volume stormwater prevented	Enter the number of gallons of stormwater runoff treated through stormwater BMPs (e.g. runoff treatment volume).
	CBSF - Green Infrastructure - number of trees planted	Enter the number of trees planted.
Riparian and Freshwater Habitat Restoration, Conservation, and Management (select all that apply)	CBSF - Riparian restoration - Miles restored	Enter the number miles of riparian habitat restored through the implementation of forest or grass buffers that are at least 35 feet wide. If you're implementing livestock exclusion, report associated outcomes instead under the "CBSF - BMP implementation for livestock fencing -- miles of fencing installed" metric.
	CBSF - BMP implementation for livestock fencing - Miles of fencing installed	Enter the number of miles of livestock exclusion installed. Assume activities include exclusion fencing and a 35-foot forest or grass buffer, unless otherwise noted.
	CBSF - Stream restoration - Miles restored	Enter the number of miles of stream restored for nutrient and sediment load reduction, consistent with qualifying conditions and restoration protocols established by the Chesapeake Bay Program.
	CBSF - Floodplain restoration - Acres restored	Enter the number of acres of floodplain restored for nutrient and sediment load reduction, consistent with qualifying conditions and restoration protocols established by the Chesapeake Bay Program. Also report any associated linear stream restoration outcomes through the "CBSF - Stream restoration -- Miles restored" metric.
	CBSF - Wetland restoration - Acres restored	Enter the number of acres of wetland habitat restored, created, or enhanced.
	CBSF - Fish passage improvements - Miles of stream opened	Enter the number of miles of stream habitat opened to fish populations through dam removals, culvert replacement, or other fish passage improvements. A mile opened is defined as number of new miles that restoration makes accessible for aquatic species.
	CBSF - Instream habitat restoration - Miles restored	Enter the number of miles of instream habitat restoration activities not otherwise creditable for nutrient and sediment load reduction, consistent with qualifying conditions and restoration protocols established by the Chesapeake Bay Program. Projects implementing qualifying stream restoration practices for TMDL crediting should instead report those outcomes instead through the "CBSF - Stream restoration - Miles restored" metric.
	CBSF - Conservation easements - Acres protected under easement	Enter the number of acres protected under long-term easement (permanent or >30-yr).

Strategy	Recommended Metric*	Metric Description/Instructions
Estuarine and Tidal Habitat Restoration, Conservation, and Management (select all that apply)	CBSF - American oyster - Marine habitat restoration - Acres restored	Enter the number of acres of native oyster reef restored.
	CBSF - Wetland restoration - Acres restored	Enter the number of acres of wetland habitat restored, created, or enhanced.
	CBSF - Fish passage improvements - Miles of stream opened	Enter the number of miles of stream habitat opened to fish populations through dam removals, culvert replacement, or other fish passage improvements. A mile opened is defined as # of new miles that restoration makes accessible for aquatic species.
	CBSF - Erosion control - Miles restored	Enter the number of miles of tidal shoreline stabilized or restored through erosion control, including living shoreline restoration. Projects implementing qualifying stream restoration practices for TMDL crediting should instead report those outcomes instead through the "CBSF - Stream restoration - Miles restored" metric.
Building Capacity for Landscape-Scale Watershed and Habitat Outcomes (select all that apply)	CBSF - Conservation easements - Acres protected under easement	Enter the number of acres protected under long-term easement (permanent or >30-yr).
	CBSF - Outreach/ Education/ Technical Assistance - # people reached	Enter the number of individuals reached by outreach, training, or technical assistance activities. In the "Notes" section, provide a summary of how individuals are reached (newsletter mailing list total, training attendance, etc.).
	CBSF - Outreach/ Education/ Technical Assistance - # people with changed behavior	Enter the number of individuals measured as demonstrating changed behavior to benefit watershed restoration and protection. In the "Notes" section, provide a summary of how behavior change will be measured and tracked. If you have questions on whether your project contains behavior change activities, please contact NFWF staff.
Watershed and Habitat Planning, Prioritization, Design, and Permitting (select all that apply)	CBSF - Volunteer participation - # volunteers participating	Enter the number of volunteers participating in project implementation, outreach, and education activities.
	CBSF - Management or Governance Planning - # plans developed	Enter the number of conservation, watershed, and/or habitat management plans developed or improved. In the "Notes" section, provide specific information on the aggregate areal extent of associated plans (e.g. acres, square miles), and the number and areal extent of contributing planning activities.
	CBSF - Outreach/ Education/ Technical Assistance - # people reached	Enter the number of individuals reached by outreach, training, or technical assistance activities. In the "Notes" section, provide a summary of how individuals are reached (newsletter mailing list total, training attendance, etc.).
	CBSF - Outreach/ Education/ Technical Assistance - # people with changed behavior	Enter the number of individuals measured as demonstrating changed behavior to benefit watershed restoration and protection. In the "Notes" section, provide a summary of how behavior change will be measured and tracked. If you have questions on whether your project contains behavior change activities, please contact NFWF staff.

\* Easygrants metrics should be consistent with data entered into and/or derived from FieldDoc.org.

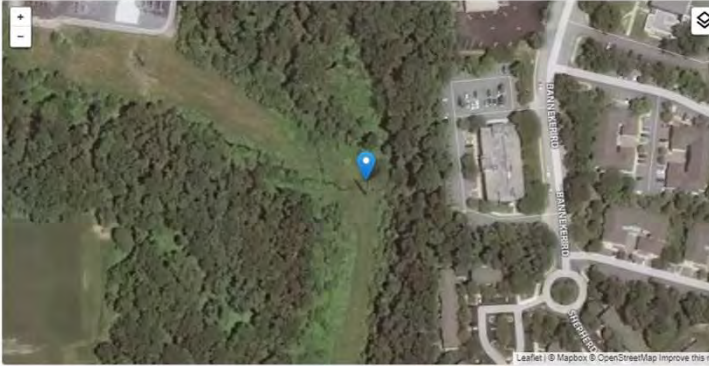
# FieldDoc

NFWF has partnered with Chesapeake Commons to develop FieldDoc, a user-friendly tool that allows consistent planning, tracking, and reporting of selected water quality improvement activities and associated nutrient and sediment load reductions from proposed grant projects.

**NFWF is hosting an instructional webinar for FieldDoc on Thursday, September 30th at 1 PM. Register via the link on the INSR RFP page**

### NFWF Test Project

Last modified by Claire Flynn on Wednesday, March 27, 2019 at 4:25pm  
Program: Chesapeake Bay Small Watershed Grant  
Text: for FieldDoc Guide



Leaflet | © Mapbox © OpenStreetMap Improve this map

### Metrics

#### Adapted Chesapeake Nutrient and Sediment Load Reduction Model

The following metric values were generated using data and algorithms supplied by the Adapted Chesapeake Nutrient and Sediment Load Reduction Model model. You can find more information about this model [here](#).

	Estimated value	Estimated progress	
Pounds of total suspended solids reduced	13,655.69 pounds per year of 13,655.69	100.0%	○
Pounds of total nitrogen reduced	59.20 pounds per year of 59.20	100.0%	○
Pounds of total phosphorus reduced	19.73 pounds per year of 19.73	100.0%	○

# 2022 INSR Full Proposal Process- New Requirement

All prospective applicants are required to consult with NFWF prior to submitting an application and **no later than November 15, 2021**.

The NFWF program staff will confirm the applicant's eligibility and provide initial feedback on the proposed project's alignment with the INSR program priorities. Prospective applicants should contact Jake Reilly at [jake.reilly@nfwf.org](mailto:jake.reilly@nfwf.org) to schedule project consultations.



Chesapeake Bay Stewardship Fund



# 2022 Uploads - Applicant Demographic Information Form - **New**

- **The information you provide will not be shared with proposal reviewers and will not be considered when making grant decisions.**
- The Foundation will not share identifying information about any particular entity or project.
- While the form is a required upload, applicants can opt out of providing the information within the form itself
  - If you have provided NFWF with this information in the last 12 months, you can opt out.
- The information provided on this excel form will be kept confidential, the Foundation may share its anonymized aggregate findings as appropriate with its staff, Board of Directors, funding partners, and publicly on its website or through other media.



Chesapeake Bay Stewardship Fund



Chesapeake Bay Program  
Science. Restoration. Partnership.

# 2022 Uploads - Applicant Demographic Information Form - New

## APPLICANT DEMOGRAPHIC INFORMATION

As part of NFWF's goal to encourage and support diversity across the conservation projects we fund, we would like to better understand the existing diversity in our grantmaking community and in the local communities. To accomplish this task, we are asking organizations that we fund to assist us by providing basic information about their workforce demographics on this form.

As part of this effort to support diversity, we also desire to understand how our grantees engage with the communities where the projects take place and who in those communities might benefit from them. We ask for this information provided on this excel form will be kept confidential, although the Foundation may share its aggregate findings as appropriate with its staff, Board of Directors, funding partners, and publicly on its webs not share identifying information about any particular entity or project. These anonymized aggregate data will be used by NFWF to better understand the demographic profiles of the organizations that we fund.

The information you provide will not be shared with proposal reviewers and will not be considered when making grant decisions.

**Instructions:** Complete all pertinent fields **shaded in green**. Your Human Resources Department may have some of the information requested readily available. Please be sure to complete the General Information section if you do not know an answer, use the "don't know/not sure" option instead of guessing. If a section does not apply to your organization you may skip it. **Do not make any other changes to this form.** You may opt out of providing this information to NFWF; however, you still must upload this form to Easygrants with your application and complete the first section of the form.

**All applicants must complete this section, even if you have provided this data to NFWF in the past 12 months or are opting out for another reason.**

If you have provided this data to NFWF in the past 12 months you do not need to provide it again but you must still complete this top section of the form and submit it with your proposal.

Easygrants project # from your grant application:

Grant program name shown on the RFP:

If you are opting out, select a reason from the dropdown list in the green box:

### General Information

Date Completed:

Project Title:

Organization Full Name:

Organization EIN:

Organization Type:

Organization Size (number of employees)

Click on the green box to select from the dropdown list

Click on the green box to select from the dropdown list

### PART 1: APPLICANT ORGANIZATION - ALL EMPLOYEES (if applicable)

Please provide the following demographic information about all of your organization's employees, including senior leaders.

1. How many people currently work for your organization? (Include temporary and part-time employees in your response but do not include contractors)

Total Number:

2. How many of your employees identify as each gender?

Female:

Male:

Non-binary:

Unknown/Not sure:

# 2022 INSR Full Proposal Narrative-

## New Requirement

Describe the community(ies) where the project will take place, who will benefit from the project, and how they were or will be engaged in project development and implementation. Provide demographic information on the community(ies), including but not limited to age, race and ethnicity, poverty rates.

- Describe community characteristics of the project area and identify any communities impacted.
- Describe outreach and community engagement activities.
- Use demographic data to document (poverty statistics, school lunch data, demographic records to articulate high need or underserved communities).
  - This data can be found using Census data, School District data, State data centers, EJ Screen, and other sources



Chesapeake Bay Stewardship Fund



Chesapeake Bay Program  
Science. Restoration. Partnership.

# Evaluation Criteria

NFWF will utilize the following evaluation criteria in formally evaluating submitted full proposals, and making final award decisions:

- **Conservation Outcomes**
- **Budget**
- **Technical Merit**



Will Parson, CBP



Chesapeake Bay Stewardship Fund



Science. Restoration. Partnership.



# Program Evaluation Criteria

Conservation Outcomes	Budget	Technical
<p><b>Clear and demonstrable increases in the rate and/or scale of implementation</b> of priority water quality improvement practices</p>	<p><b>Quality and level of detail in the budget and budget narrative</b> provide a clear and detailed understanding of the proposed funding request</p>	<p><b>Specific goals and objectives</b> that correlate with a clear, logical and achievable work plan, milestones, and timeline</p>
<p><b>Partnership/collaborative growth, enhancement, and capacity building</b> (e.g. for accelerated implementation)</p>	<p><b>Cost-effectiveness</b> in achieving proposed outcomes, considering direct and indirect costs and proposed leveraging of cash and in-kind match</p>	<p><b>Core competencies of the project team</b> in implementing the proposed activities and achieve the proposed outcomes</p>
<p><b>Plans and approaches to verify and sustain pollution load reductions</b> and plan for their continuance beyond the grant</p>	<p><b>Reasonability of proposed costs</b> based on the work plan, local or regional costs for similar activities, and proposed project outcomes</p>	<p><b>Awareness and ability to meet necessary permitting and environmental compliance requirements</b></p>
<p><b>Plans and approaches to actively transfer and disseminate project-related information</b> to appropriate audiences and relevant stakeholders</p>	<p><b>Evidence of genuine partnerships in budget</b> allocations and activities</p>	<p><b>Demonstrated ability of lead applicant</b> to manage and implement similar projects on time and within budget</p>

# Eligibility

- ✓ Eligible applicants include non-profit 501(c) organizations, state government agencies, local governments, municipal governments, Tribal governments and organizations, and educational institutions.
- ✗ Ineligible applicants include businesses, unincorporated individuals, and international organizations.



Chesapeake Bay Stewardship Fund



Chesapeake Bay Program  
Science. Restoration. Partnership.

# Ineligible Uses of Funds

- X Projects that seek funding for land or easement *acquisition*, political advocacy, lobbying or litigation are **NOT** eligible.
- X Ongoing efforts to comply with legal requirements (except to improve on baseline compliance, or develop cost-effective programs to implement MS4 permit requirements).

*Note regarding policy on indirect:*

Cost-effectiveness evaluation may include, but is not limited to, an assessment of either or both direct and indirect costs in the proposed budget. The federal government has determined that a *de minimis* 10% indirect rate is an acceptable minimum for organizations without a NICRA, as such NFWF reserves the right to scrutinize **ALL** proposals with indirect rates above 10% for cost-effectiveness.

**Direct** administrative expenses are allowed.



Chesapeake Bay Stewardship Fund



Chesapeake Bay Program  
Science. Restoration. Partnership.

# Additional Considerations

- All applicants with **active grants from NFWF must be in good standing** in terms of reporting requirements, expenditure of funds, and quality assurance (if required).
- Applicants must demonstrate awareness and the status of all permits required to comply with federal, state or local requirements.
- When procuring goods and services, NFWF recipients must follow documented procurement procedures which reflect applicable laws and regulations.



Chesapeake Bay Stewardship Fund



# Additional Considerations- Quality Assurance

If a project involves monitoring, data collection or data use, grantees will be asked to prepare and submit quality assurance documentation.

Examples of data collection or use which likely require a Quality Assurance Project Plan (QAPP):

- New data collection
- GIS or secondary data analysis
- Water or other environmental media monitoring including volunteer/community-based efforts
- Data collection and analysis proposed to support decision-making including site assessment prioritization
- Data collection and analysis associated with development or design of plans and projects e.g. fish passage, watershed or water quality/habitat restoration project plans etc.
- Surveying and behavior change work to support decision-making
- Model development or use



Chesapeake Bay Stewardship Fund



Chesapeake Bay Program  
Science. Restoration. Partnership.

# Additional Considerations- Quality Assurance

- Applicants **should** budget time and resources in their CBSF proposal to complete this task.
- Reimbursement for project activities, including non-data collection activities, may be delayed until quality assurance compliance requirements are complete.
- **New for 2022-** Projects that require a QAPP should budget time and resources to complete the QAPP and have it approved within the *first 3 months of the grant's period of performance*. The timeline for receiving review feedback and comments and subsequent submittal for EPA approval is dependent upon the quality of the draft QAPP submission and may involve several iterations.



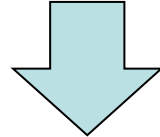
Chesapeake Bay Stewardship Fund



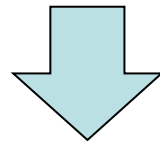
Chesapeake Bay Program  
Science. Restoration. Partnership.

# Additional Considerations- Quality Assurance Process

**Prepare a draft QAPP:** Your document will be reviewed by the external QAPP consultants at Cardno. Comments are dependent upon the quality of the QAPP submission and may involve several iterations prior to submission to EPA. Each resubmission of the draft QAPP to Cardno will initiate a 30-day review and comment period.



**QAPP is technically approved and submitted to the EPA by NFWF:** EPA will have a chance to review and comment on the draft QAPP prior to providing their signature. It is our goal that QAPPs submitted to EPA receive no additional feedback and are technically sound enough to be signed by them.



**QAPP Review and Approvals:** NFWF will advise grantees concerning the status of the QAPP review (e.g. approved, requested revisions, etc.) and circulate the final, signed version. The QAPP tag restricting payment on data collection activities is removed.

# Timeline for 2022 INSR Grants

Full proposal due date

November 29, 2021

INSR review team assesses all full proposals and recommends projects for funding

Late 2021/early 2022

NFWF receives board approval and notifies Congress on recommended awards

Early March 2022

NFWF notifies full proposal applicants of awards or declines

March 2022

Grant agreements issued

Summer (est.)



Chesapeake Bay Stewardship Fund





# Quick Tips for Applicants

- ✓ Re-read the RFP. Call us if you're confused.
- ✓ Talk to people about your project idea. Listen to feedback.
- ✓ These are competitive grants. Your projects should have a “wow” factor.
- ✓ Be strategic first, opportunistic second.
- ✓ Submit your Full Proposal **ON OR BEFORE November 29th**
- ✓ Note that NFWF staff will not be in the office at 11:59 pm on November 29th!



Chesapeake Bay Stewardship Fund





# NEED ASSISTANCE?

(202) 857-0166 | [www.nfwf.org/chesapeake](http://www.nfwf.org/chesapeake)

## NFWF Chesapeake Staff:

Jake Reilly, Program Director  
[Jake.Reilly@nfwf.org](mailto:Jake.Reilly@nfwf.org)

Stephanie Heidbreder, Program Manager  
[Stephanie.Heidbreder@nfwf.org](mailto:Stephanie.Heidbreder@nfwf.org)

Nicole Thompson, Program Coordinator  
[Nicole.Thompson@nfwf.org](mailto:Nicole.Thompson@nfwf.org)

Field Liaison Contact	Email	Phone	Sector Expertise
Kristen Saacke Blunk	<a href="mailto:kristen@headwaters-llc.org">kristen@headwaters-llc.org</a>	(814) 360-9766	• All Sectors
Kristen Hughes Evans	<a href="mailto:kristen@sustainablechesapeake.org">kristen@sustainablechesapeake.org</a>	(415) 730-7503	• Agricultural Conservation
Elizabeth Feinberg	<a href="mailto:liz.feinberg63@gmail.com">liz.feinberg63@gmail.com</a>	(610) 212-2345	• All Sectors
David Hirschman	<a href="mailto:dave@hirschmanwater.com">dave@hirschmanwater.com</a>	(434) 409-0993	• Stormwater Management
Katie Ombalski	<a href="mailto:katie@woodswaters.com">katie@woodswaters.com</a>	(814) 574-7281	• Agricultural Conservation • Habitat Restoration

# Agenda

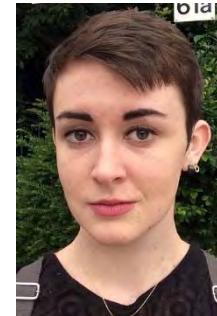
1. Webinar Instructions
2. Overview of Chesapeake Bay Stewardship Fund
3. Review of 2022 Innovative Nutrient and Sediment Reduction RFP
4. **How to Submit a Proposal Using Easygrants**



Jake Reilly,  
Program Director



Stephanie Heidbreder,  
Program Manager



Nicole Thompson,  
Program Coordinator



Chesapeake Bay Stewardship Fund



Chesapeake Bay Program  
Science. Restoration. Partnership.

# 4. How to submit a proposal

## Step One: Create an Account



Enter your login ID and password and click **Log In** below. If you have forgotten your password, click **Forgot your password?** below.  
If you are a first time visitor to this system, click **Register here** below.

[Frequently Asked Questions](#)

**Log In** [New User?](#)

Login ID / Email

Password

Remember Me [Forgot Password?](#)

**Log In**

For the optimal Easygrants experience, please:

- [Use a Supported Browser](#)
- [Enable Pop-ups](#)
- [Allow Cookies](#)
- [Only Use One Tab](#)
- [Get Adobe Reader](#)
- [Log Out and Close Browser for Security](#)

For Technical assistance, please contact us via [e-mail](#) or phone 202-595-2497.  
[Download Adobe Reader](#)  
Powered by Easygrants™ v9.5.0

# Please Add a Phone Number!

- Once you have created your Easygrants log-in and or you log-in as an existing user, please visit review your contact details and make sure that you provide a phone number.

The screenshot shows the NFWF user interface. At the top, the NFWF logo is visible. Below it, there are navigation buttons: 'My Tasks', 'My Grants', 'Profile', and 'Apply For Funding'. The 'Profile' button is circled in red. Below these buttons, there are four main menu items: 'Home', 'Change Password', 'FAQ', and 'Log Out'. To the right of these items, there are three links: 'View My Contact Details', 'Manage My Communication and Interests', and 'Manage My Demographics'. A red arrow points from the text 'Click here' to the 'View My Contact Details' link. Below this, a large red arrow points downwards with the text 'Scroll down'. At the bottom of the screenshot, there is a 'Phone' input field with a yellow phone icon on the left and a blue 'Add' button on the right. The 'Add' button is circled in red.



Chesapeake Bay Stewardship Fund



Chesapeake Bay Program  
Science. Restoration. Partnership.

# Budget Tips

- **Concise Budget Narrative must be included for every line item.**
- Budget should only include the grant amount requested from NFWF
- Must comply with [OMB's Uniform Guidance](#)
- Itemize all costs in appropriate budget categories.
- Avoid lumping costs i.e., All Materials and Supplies: \$10,000.
- Total Amount Requested in Project Information section must equal the Budget Grand Total in Budget section



NFWF



Chesapeake Bay Stewardship Fund



Science. Restoration. Partnership.

# Budget Tips

SUBAWARD	CONTRACT
Transfer of programmatic responsibility to another organization, with measurable performance goals related directly to the primary award	A party is required to deliver a product or service in exchange for compensation

- For each Subaward or Contract, briefly describe the associated activities, scope of work or services to be provided and how the costs were estimated
- If you have not identified the specific contractor or subrecipient who will be conducting the required work, put “TBD” in the Contractor/Subrecipient line



NFWF

Chesapeake Bay Stewardship Fund



Chesapeake Bay Program  
Science. Restoration. Partnership.

# Financial and Other Documents

All financial documentation must:

- Represent the same fiscal year period
- be the most recent financial information available and *less than* two years old

Further details on document requirements and for FAQs visit our website:

**<https://www.nfwf.org/apply-grant/application-information>**



NFWF



Chesapeake Bay Stewardship Fund



Chesapeake Bay Program  
Science. Restoration. Partnership.



# Let's try it...

**NFWF** NATIONAL FISH AND WILDLIFE FOUNDATION

My Tasks - Claire Question - Home

My Tasks | My Grants | Profile | Apply For Funding

Home | Change Password | FAQ | Log Out

To access a task below, [click the task name link in the Task column](#).  
Peer Reviewers: To view the proposal you are reviewing please click the "Third Party Review" link. Please do not click View PDF, as it will open a copy of the review you are submitting and not the proposal.

[Apply for Funding](#) [View All My Tasks](#)

### My Tasks

Easygrants ID	Primary Contact/PI	Task	Program Name	Funding Cycle Name	Status	Outcome	Due Date	
62195	Question, Claire	<a href="#">Full Proposal</a>	Grants	Chesapeake Bay Small Watershed Grants Implementation 2018	Incomplete	Not Submitted	9/4/2018	<a href="#">View PDF</a>

For Technical assistance, please contact us via [e-mail](#) or phone 202-595-2497.  
[Download Adobe Reader](#)  
Powered by Easygrants™ v9.5.0



# NEED ASSISTANCE?

(202) 857-0166 | [www.nfwf.org/chesapeake](http://www.nfwf.org/chesapeake)

## NFWF Chesapeake Staff:

Jake Reilly, Program Director  
[Jake.Reilly@nfwf.org](mailto:Jake.Reilly@nfwf.org)

Stephanie Heidbreder, Program Manager  
[Stephanie.Heidbreder@nfwf.org](mailto:Stephanie.Heidbreder@nfwf.org)

Nicole Thompson, Program Coordinator  
[Nicole.Thompson@nfwf.org](mailto:Nicole.Thompson@nfwf.org)

Field Liaison Contact	Email	Phone	Sector Expertise
<b>Kristen Saacke Blunk</b>	<a href="mailto:kristen@headwaters-llc.org">kristen@headwaters-llc.org</a>	(814) 360-9766	• All Sectors
<b>Kristen Hughes Evans</b>	<a href="mailto:kristen@sustainablechesapeake.org">kristen@sustainablechesapeake.org</a>	(415) 730-7503	• Agricultural Conservation
<b>Elizabeth Feinberg</b>	<a href="mailto:liz.feinberg63@gmail.com">liz.feinberg63@gmail.com</a>	(610) 212-2345	• All Sectors
<b>David Hirschman</b>	<a href="mailto:dave@hirschmanwater.com">dave@hirschmanwater.com</a>	(434) 409-0993	• Stormwater Management
<b>Katie Ombalski</b>	<a href="mailto:katie@woodswaters.com">katie@woodswaters.com</a>	(814) 574-7281	• Agricultural Conservation • Habitat Restoration