



NFWF

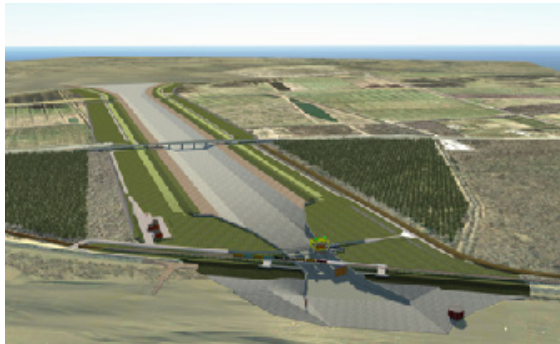
Gulf Environmental Benefit Fund

LOUISIANA

Mid-Barataria Sediment Diversion: Construction

Louisiana’s Barataria Basin is one of Louisiana’s most productive estuaries, containing over 1,700 square miles of wetlands ranging from freshwater swamps in the north to saline marshes in the south. It is home to a variety of commercially and recreationally important fish and wildlife species. Barataria Basin has lost over 420 square miles of coastal wetlands since 1932 due to a variety of factors including subsidence, sea level rise, oil and gas activity, and waterway construction. A significant contributor to this land loss crisis has been the leveeing of the Mississippi River which has prevented the regular flooding of the delta plain with freshwater and sediment required to offset subsidence and sea level rise.

NFWF previously awarded GEBF funds to CPRA to complete the required engineering & design and environmental analyses to develop the project. This award will support construction of the Mid-Barataria Sediment Diversion project, in addition to funding awarded through the Natural Resource Damage Assessment program. The project will reconnect the Mississippi River to its deltaic floodplain, allowing sediments and freshwater to naturally build and sustain wetlands in the Barataria Basin. Construction of the project and its subsequent operations is expected to build or sustain approximately 20 square miles or 13,000 acres of wetlands (compared to the “future without action” scenario) over 50 years. Construction is expected to take five years.



The two images above represent the proposed diversion concepts.

AT A GLANCE

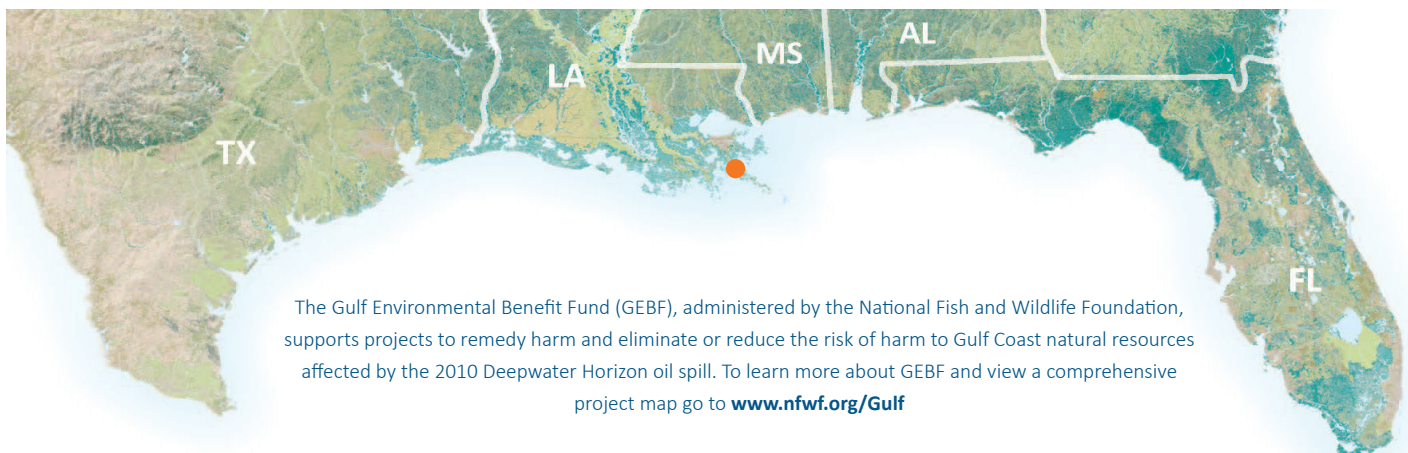
RECIPIENT:
Louisiana Coastal Protection and Restoration Authority (CPRA)

AWARD AMOUNT:
\$660,000,000

LOCATION:
Plaquemines Parish

AWARD DATE:
March 2023

STATUS:
Awarded



The Gulf Environmental Benefit Fund (GEBF), administered by the National Fish and Wildlife Foundation, supports projects to remedy harm and eliminate or reduce the risk of harm to Gulf Coast natural resources affected by the 2010 Deepwater Horizon oil spill. To learn more about GEBF and view a comprehensive project map go to www.nfwf.org/Gulf