

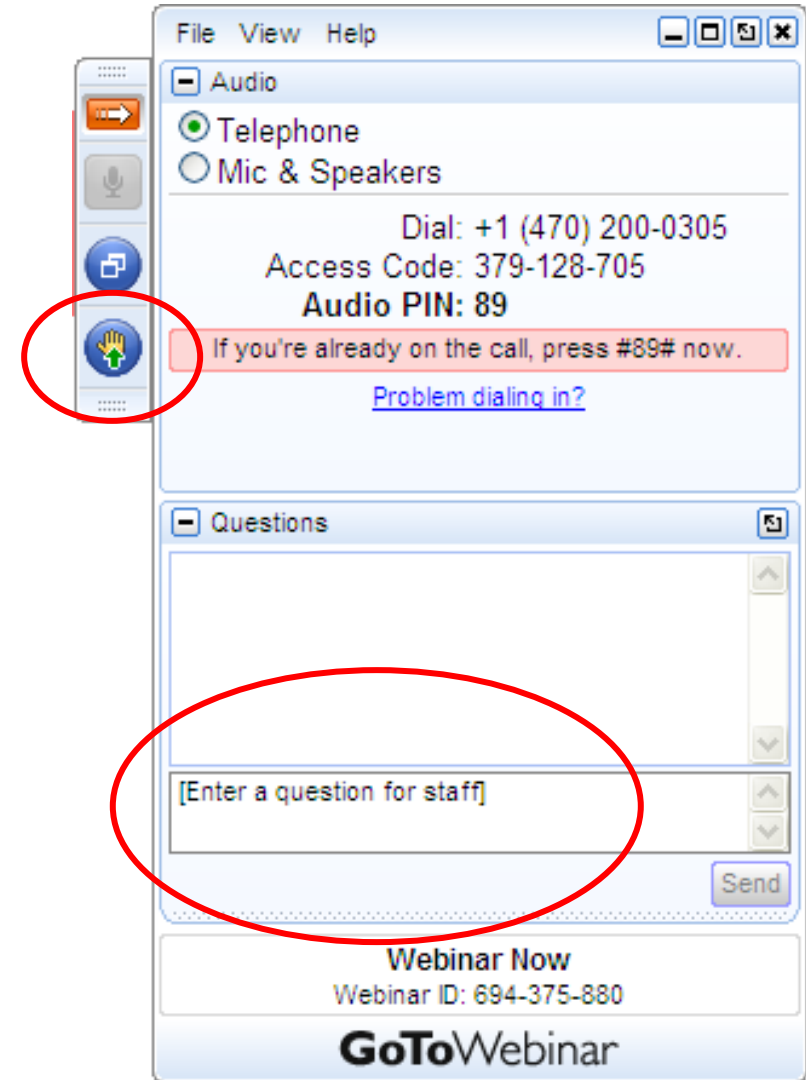
Young harp seal, Long Island Sound

Long Island Sound Futures Fund 2023
Applicant Webinar – MA, NH & VT



WEBINAR INSTRUCTIONS

- To improve sound quality, all participants will be muted for the duration of the webinar. If you want to ask a question you have two options:
 1. Enter your question where it says “Enter a question for staff” and click send. We will type a response or read your question aloud when we pause for Q&A.
 2. Write it down and contact us after the webinar. We have a lot of material to cover, so you may prefer to have a more in-depth discussion later.
- We may ask you to raise your “hand” in the webinar dialogue box to confirm participants can hear us.
- If you experience a technical glitch, please type it into the question box, since we can’t hear you. (We may not know about the glitch unless you say something!)
- **Webinar recording and powerpoint will be uploaded at nfwf.org/lisff**



NFWF

Agenda

1. Source of Funding
2. CCMP Principles, Theme & Implementation Actions
3. Boundaries & Project Types
4. Range of Funds
5. Grant Guidelines
6. Evaluation
7. Easygants
8. Tips & Resources
9. Timeline



LISFF 2023 Sources of Funding

~\$10 million +!



NFWF



CCMP Principles, Theme & Implementation Actions

CCMP Cross cutting principles: Resilience, Sustainability, Environmental Justice

CCMP Theme...

Clean Waters & Healthy Watersheds: Improve wq by reducing nitrogen pollution, CSOs, impervious cover, stormwater and point sources of pollution.

2020–2024 Long Island Sound Comprehensive Conservation and Management Plan Update

This update contains new and revised Implementation Actions (IAs) for the 2020-2024 planning cycle. The full CCMP with the original IAs is at: longislandsoundstudy.net/2015/09/2015-comprehensive-conservation-and-management-plan.



January 2021

CCMP Principles, Themes & Implementation Actions

CCMP Implementation Actions: Actions identified to carry out the CCMP themes.
Examples...

Theme: Clean Waters and Healthy Watersheds...WW-2: Continue to collaborate with municipalities, local partners and stakeholders to strategically plan for and implement capital improvements, Best Management Practices (BMPs), and improved operation and maintenance to mitigate point and nonpoint source pollution loadings.

How to identify CCMP Themes and Implementation Actions related to project activities? *Resource: [LISFF Metrics and Implementation Action Tracking Guidance](#)*

THEME: CLEAN WATERS & HEALTHY WATERSHEDS - IMPLEMENTATION ACTION WW		
Potential CCMP Implementation Actions	Examples of Project Activities	List of Potential Project Metrics Depending upon Project Activities
<ul style="list-style-type: none">• WW-1: Evaluate how drivers of pollutant loads and management responses will affect current and future pollutant loads from point and nonpoint sources.• WW-2: Continue to collaborate with municipalities, local partners and stakeholders to strategically plan for and implement capital improvements, Best Management Practices (BMPs), and improved operation and maintenance to mitigate point and nonpoint source pollution loadings.• WW-4: Pursue opportunities to further improve nitrogen removal	<ul style="list-style-type: none">• Best Management Practice implementation for nitro-gen/nutrient reduction• Best Management Practice implementation for P reduction• Best Management Practice implementation for TSS reduction• Erosion Control for nutrient or	<ul style="list-style-type: none">• Lbs. N avoided annually• Lbs. P avoided annually• Lbs. of sediment avoided annually• # septic system upgrades• Volume of stormwater prevented• Acres with BMPs• Miles restored• Volume of stormwater prevented• Square miles restored

2020–2024 Long Island Sound Comprehensive Conservation and Management Plan Update

This update contains new and revised Implementation Actions (IAs) for the 2020-2024 planning cycle. The full CCMP with the original IAs is at: longislandsoundstudy.net/2015/09/2015-comprehensive-conservation-and-management-plan.



January 2021

Geography for Grants in the Upper Long Island Sound Watershed

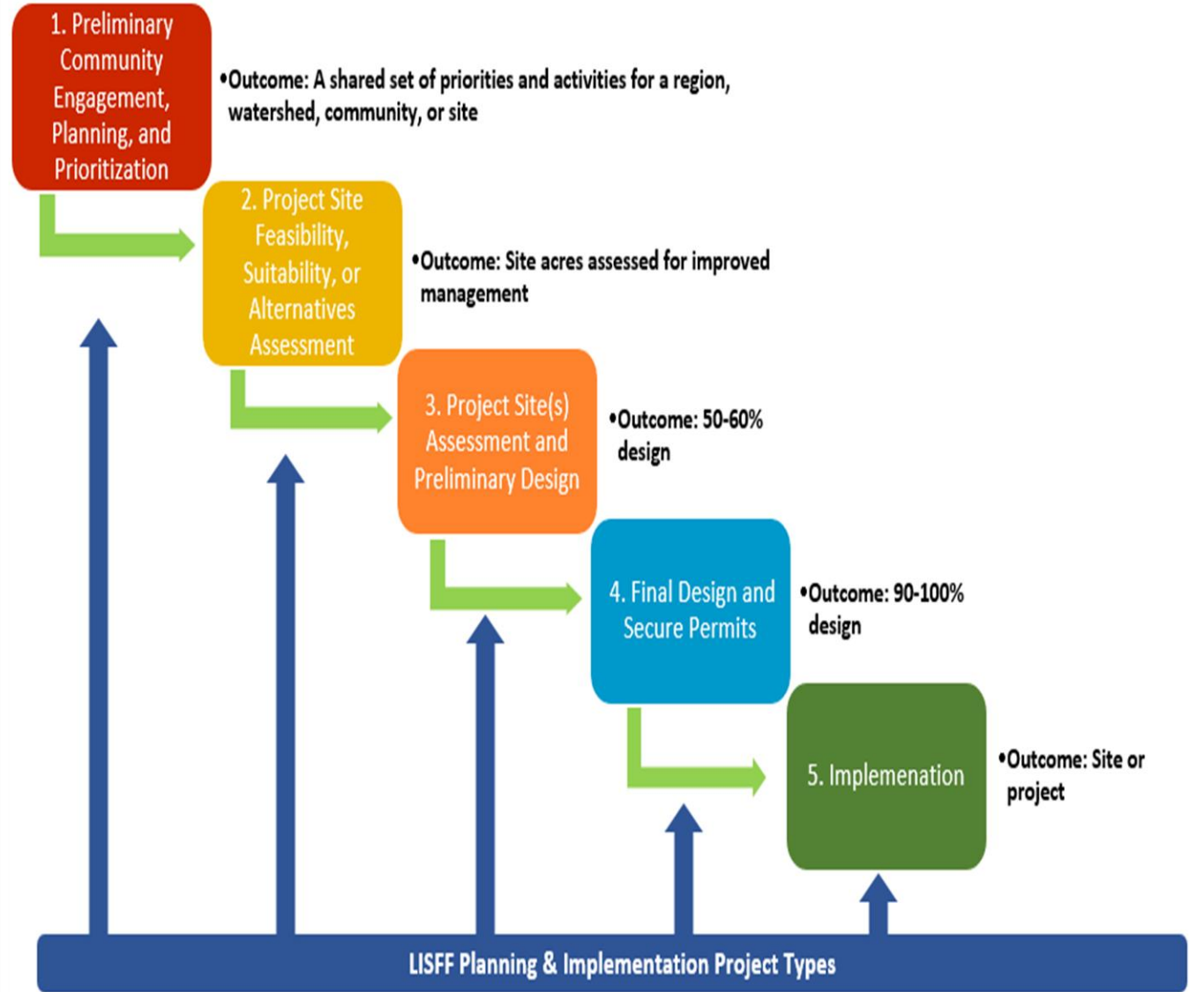
Check out the [Interactive Map](#) (in RFP)



Range of Funds for Grants

Planning for: Community Engagement, Prioritization, & Planning, (Feasibility/Suitability/Alternatives Assessment, Conceptual and final Design/Planning) \$50,000 to \$500,000

Implementation: \$50,000 to \$1.5m



Grant Guidelines

Project Performance Period

- Start w/in 6 months complete w/in 24 months after grant award
- Large-scale or particularly complex projects start w/in 6 months & complete w/in 36 months after grant award
- Grant award notice November 2023
- Project start date not before October 1, 2023

Match

- **25% of Requested Amount from NFWF**
 - **Non-federal** cash funds and/or in-kind services
 - *Examples: In-kind contributions of staff/volunteer time, materials/services donated or other tangible contributions to the project*
 - May be from applicant or partners
 - Used during start and end date of LISFF grant
 - Relate to specific project being delivered
- **Eligible applicants** 501(c) organizations, state, local & municipal government, Tribal Governments & Organizations, and educational institutions



Overall Evaluation Criteria

All Proposals:

- Program Goals & Priorities = CCMP
- Technical Merit
- Community Impact
- Budget/Cost Effectiveness
- Match
- Long-term sustainability



QUESTIONS?



Examples - Types of Projects

- Green infrastructure to prevent N loading
- OWTS to reduce N at its source
- Watershed planning (9 Element)
- Riparian buffer/bank vegetation to slow & intercept N
- Stream channel reconnection to floodplains to promote N removal
- In-stream restoration to increase N processing & reduce downstream erosion of N
- Replacing/right-sizing culverts, improving road/stream crossings to reduce downstream erosion of N
- Low-cost retrofits at WWTF to prevent nitrogen loading

Your Ideas Welcome! Send to courtney@throwe-environmental.com



Examples of Prior Grants

WWTF

- Chicopee, MA: Planning to reduce N at a WPCF. **Grant: \$15k**
- Springfield Water & Sewer Commission, MA: Optimize N removal. **Grant: \$290k**

Bed & Bank

- CT River Conservancy, NH: Bank stabilization & riparian restoration. **Grant: \$281k**
- Trout Unlimited, VT: Restore wetland, floodplain, bank & riparian buffer. **Grant: \$143k**

Rural & Ag

- VACD, VT: Prioritize areas to restore pocket wetlands in ag fields. **Grants: \$254k**
- Essex County NRCD, VT: Cover cropping species mix, planting & monitor. **Grant: \$50k**
- CT River Conservancy, VT: TA/design N prevention projects on rural lands. **Grant: \$250k**
- Rich Earth Institute, VT: Deploy urine reclamation technology. **Multiple Grants: μ \$95k**

Other

- VT DEC: Water resource mapping to guide prioritization of N prevention. **Grant \$210k**

Project Examples



Borough of Naugatuck, CT, removing impervious pavement and constructing Low Impact Development and green infrastructure stormwater improvements downtown, **Grant: \$535,289**





Did you know water from this parking lot travels all the way to Long Island Sound?

These bioretention planters collect contaminated runoff from sidewalks and the parking lot. The bioretention system is comprised of engineered soil media, stone, and plants that filter out pollutants such as metals, nutrients, and bacteria.

This helps reduce flooding and cleanses storm water before it flows into surrounding water bodies, or makes its way back into the soil and recharges groundwater.

Clean
Uses plants and soils to filter out pollution.

Cool
Replaces hard surfaces that hold heat.

Protect
Absorbs rain and reduces flooding.

Wellness
Cleans our air and creates welcoming spaces.

Economy
Green stormwater infrastructure creates welcoming spaces for businesses and patrons, promoting economic growth.

Habitat
Attracts animals like birds, butterflies, and bees.

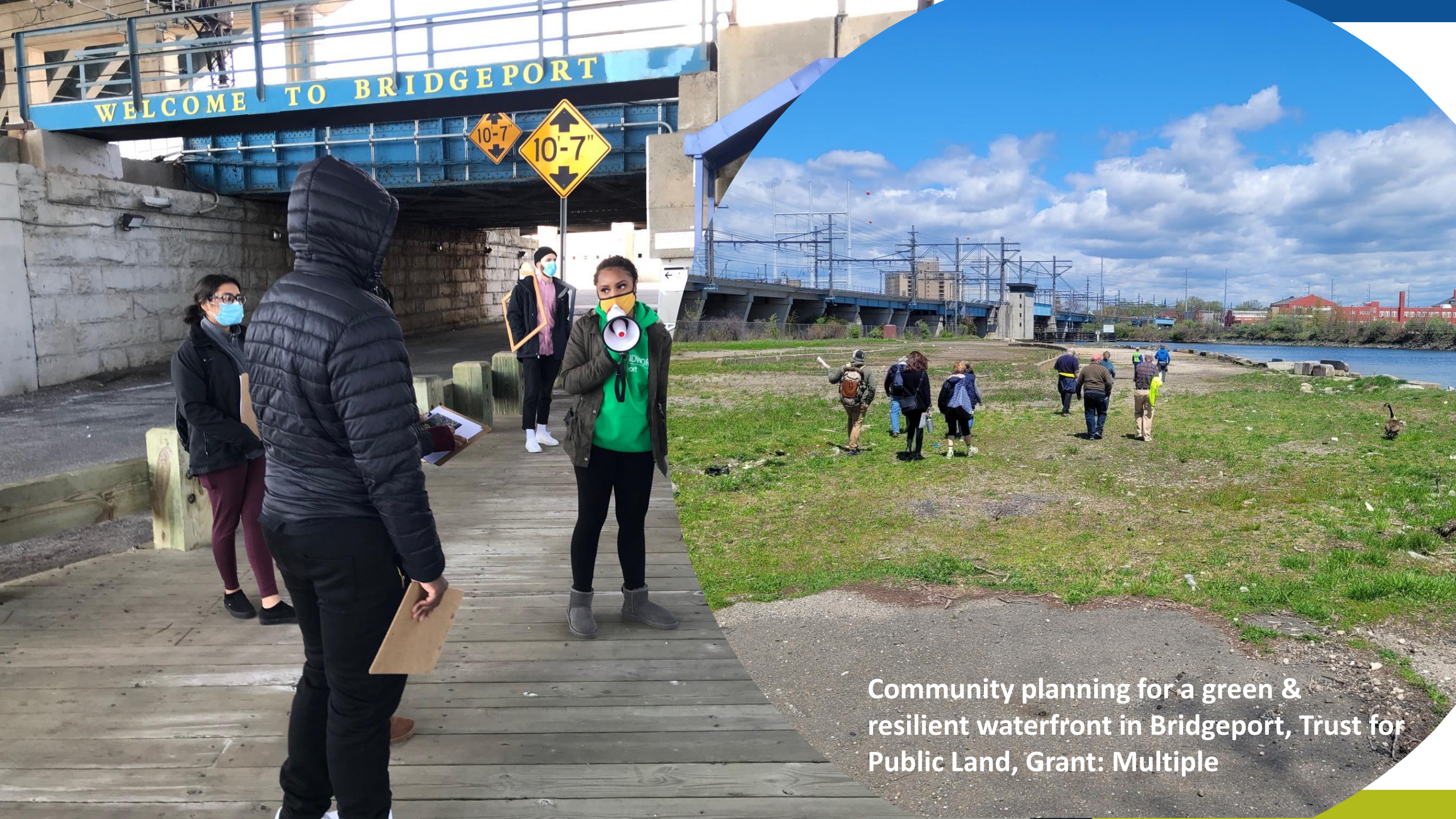
We were able to implement these green infrastructure improvements with funding provided by the Long Island Sound Futures Fund administered by the National Fish and Wildlife Foundation. These green strategies help provide cleaner water and healthier communities.

NORWALK
The Sound of Connecticut

NATIONAL FISH AND WILDLIFE FOUNDATION



Green infrastructure and Low Impact Development to reduce stormwater pollution, Webster Street Lot, Norwalk, Grant: \$250,000



Community planning for a green & resilient waterfront in Bridgeport, Trust for Public Land, Grant: Multiple



Windham County Natural Resources Conservation District, VT, NH. Identify practices, conduct trials and assess and monitor results to inform selection of BMPs to reduce N from farms. **Grant: \$418,596**

QUESTIONS?



Parts of a LISFF Proposal



Register in Easygrants

Enter your login ID and password and click **Log In** below. If you have forgotten your password, click **Forgot your password?** below. If you are a first time visitor to this system, click **Register here** below.

[Frequently Asked Questions](#)

Log In

[New User?](#)

Login ID / Email

Password

☐ Remember Me

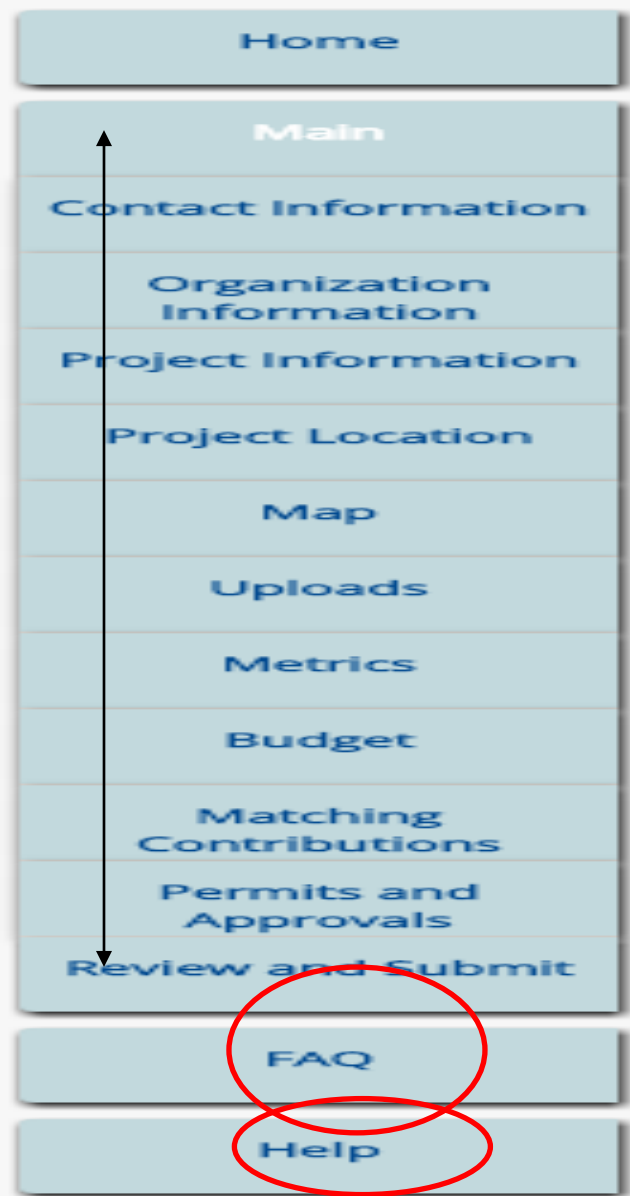
[Forgot Password?](#)

Log In

For the optimal Easygrants experience, please:

-  [Use a Supported Browser](#)
-  [Enable Pop-ups](#)
-  [Allow Cookies](#)
-  [Only Use One Tab](#)
-  [Get Adobe Reader](#)
-  [Log Out and Close Browser for Security](#)

Parts of the LISFF Easygrants Application



Project Information

Due: 6/22/2017 11:59 PM ET

Easygrants ID: 57754

Test, Heather | (Yale University)

Grants | Long Island Sound Futures Fund | Long Island Sound Futures Fund 2017

Instructions

Click the page links on the left navigation bar, or in the summary below to view the pages where you will enter the information required for this submission. Click **Help** for examples and instructions. Click **Home** to return to your Home page. You may save and return to edit your information as many times as needed until you submit. Once you submit, you will no longer be able to make changes. Click [here](#) to view Foundation Guidelines for this Funding Opportunity.

Other useful links that will appear in the navigation bar at left include:

- Home brings you back to your Home page and out of this submission task.
- FAQ provides answers to common questions about the Foundation's proposal elements.
- Help provides guidance on both content and technical aspects related to completing many of the pages in the system.
- Log Out logs you out of the system.

Validation Summary

Page Name	Status
Contact Information	Complete
Organization Information	Complete
Project Information	Incomplete
Project Location	Incomplete
Map	Incomplete
Uploads	Incomplete
Metrics	Incomplete
Budget	Complete
Matching Contributions	Complete
Permits and Approvals	Complete

Project Information

> Project Information

Due: 3/16/2023 11:59 PM ET

Easygrants ID: 79134

Lewis, Erin |

Grants | Delaware River Restoration Fund | Delaware Watershed Conservation Fund 2023

> Instructions

Enter the details requested below regarding the project. Click [Help](#) for examples and instructions. Click [Save](#) regularly to save your work. The system will timeout and you will lose unsaved work if you do not save at least once. Fields with a red asterisk (*) are required for final submission for most programs.

Please do not exceed the character limits below to ensure that your entry is not lost or cut off when saving.

> Project Details

Project Title *

Project Start Date *

Project End Date *

Description *

Limit: 1000 characters

Remaining: 1000

Abstract *

Limit: 1500 characters

Remaining: 1500

> Project Budget

Requested Amount *

Project Budget

<u>Personnel</u>		\$0.00
Personnel +		\$0.00
<u>Travel</u>		\$0.00
Domestic Airfare - Per Flight +		\$0.00
International Airfare - Per Flight +		\$0.00
Train - Per Ticket +		\$0.00
Rental Car - Per Day +		\$0.00
Taxis - Per Trip +		\$0.00
Mileage - Per Mile +		\$0.00
Gasoline - Per Gallon +		\$0.00
Per Diem (M&IE) - Per Day +		\$0.00
Lodging - Per Night +		\$0.00
Meals (No M&IE) - Per Meal +		\$0.00
<u>Equipment</u>		\$0.00
Equipment +		\$0.00
<u>Materials and Supplies</u>		\$0.00
Materials and Supplies +		\$0.00
<u>Contractual Services</u>		\$0.00
Subcontract/Contract - Per Agreement +		\$0.00
Subgrant - Per Agreement +		\$0.00
<u>Other Direct Costs</u>		\$0.00
Other Direct Costs +		\$0.00
<u>Indirect Costs</u>		\$0.00
Indirect Costs +		\$0.00
<u>Total Direct Costs</u>		\$0.00
<u>Total Indirect Costs</u>		\$0.00
<u>Total Costs</u>		\$0.00

TIP! "Total Costs" on BUDGET page MUST = "Requested Amount" on PROJECT INFORMATION page

Project Information

Project Budget

Requested Amount *

Indirect Cost Policy: nfwf.org/apply-grant/application-information/indirect-cost-policy



WF

Budget Narrative – ALWAYS!

▼ Equipment


Equipment  

▼ Materials and Supplies

Materials and Supplies  

▼ Contractual Services

Subcontract/Contract - Per Agreement  

Subgrant - Per Agreement  

	\$0.00
	\$0.00
	\$0.00
	\$0.00
	\$0.00
	\$0.00
	\$0.00

- **Tip!** You must ALWAYS enter a budget narrative. Thank You 😊



Long Island Sound Futures Fund 2023 Proposal Narrative

INSTRUCTIONS: This is the narrative portion of the Long Island Sound Futures Fund (LISFF) application. Narrative should not exceed 10 pages in a 12-point font. Please do not delete questions (you can remove the description or graphics after the boldface question category but not the category itself (e.g., maintain

Technical Merit. Provide a work plan, including a: a) description of *each* major activity to be undertaken by the project and the method used to carry out that activity; and b) timetable indicating when activities are to be accomplished. The timetable does not need to provide specific dates but instead may group activities by month/quarter over the start and end date of the project. Remember if you need a QAPP you need to plan for that activity in the timeline and budget. Go to the LISFF [QAPP page](#) for information about timing.

- ***For habitat restoration and water quality implementation projects of all sizes*** describe resources for long-term maintenance of the site.
- ***For smaller-scale water quality implementation projects*** like a single or distributed community raingardens etc. describe: community education about project benefits especially in terms of the Sound.
- ***For fish passage projects (plans or implementation):*** 1) if the barrier is one of multiple barriers that block downstream movement of fish to the Sound; 2) discuss planning and timing to remove the other barriers; and 3) the location of the barrier in terms of its distance from Long Island Sound.
- ***For projects primarily focused on invasives control:*** 1) discuss methods for treatment and retreatment of the area, types of invasives to be addressed, if replanting with natives provide a plant list, and preparation of a long-term management and stewardship plan as part of the project. If you already have this plan put it in the “Uploads” section in Easygrants as part of your proposal; or 2) If this area has received a prior LISFF grant to address invasives, discuss how this effort follows on the previous primary and secondary treatment (when prior project occurred, type of invasive treated, why the need for retreatment) and confirm that the proposed invasives control is being done under a management plan. Put that existing plan in the “Uploads” section in Easygrants as part of your proposal.

Uploads. **Tip!** Collect Documents Early

Upload Type	Required	Template	File Types Allowed	Max Uploads	Max File Size	Max Pages	Max Words	Max Characters
LISFF Full Proposal Narrative 2020	Yes	LISFF Full Proposal Narrative Template 2020	.doc, .docx, .pdf, .rtf	No Limit	16 MB	12	No Limit	No Limit
Letters of Support	Yes		.xls, .doc, .pdf, .rtf, .gif, .jpeg, .jpg, .docx	No Limit	16 MB	No Limit	No Limit	No Limit
Conceptual Plans	No		.xls, .doc, .pdf, .rtf, .gif, .jpeg, .jpg, .docx	No Limit	16 MB	No Limit	No Limit	No Limit
Engineered Plans	No		.xls, .doc, .pdf, .rtf, .gif, .jpeg, .jpg, .docx	No Limit	16 MB	No Limit	No Limit	No Limit
Photos - Jpeg	No		.jpeg, .jpg	No Limit	16 MB	No Limit	No Limit	No Limit
Statement of Litigation	Yes	Statement of Litigation	.doc, .docx, .pdf, .rtf	No Limit	16 MB	6	No Limit	No Limit
Board of Trustees, Directors, or equivalent	Yes		.doc, .docx, .pdf, .rtf	No Limit	16 MB	No Limit	No Limit	No Limit
GAAP audited financial statements	Yes		.xls, .doc, .pdf, .rtf, .gif, .jpeg, .jpg, .docx, .xlsx	No Limit	16 MB	No Limit	No Limit	No Limit
IRS Form 990	Yes		.xls, .doc, .pdf, .rtf, .gif, .jpeg, .jpg, .docx	No Limit	16 MB	No Limit	No Limit	No Limit
A-133 Audit	Yes		.xls, .doc, .pdf, .rtf, .gif, .jpeg, .jpg, .docx	No Limit	16 MB	No Limit	No Limit	No Limit
Indirect Rate Agreement	No		.xls, .doc, .pdf, .rtf, .gif, .jpeg, .jpg, .docx	No Limit	16 MB	No Limit	No Limit	No Limit
Other Documents	No		.doc, .docx, .gif, .jpeg, .jpg, .pdf, .ppt, .pptx, .rtf, .xls, .xlsx	No Limit	16 MB	No Limit	No Limit	No Limit

Uploads

Choose Upload Type ▼

+ Add files...

Start upload

Cancel upload

There are no grant documents attached.

Continue



QUESTIONS?



Tips for Preparing a Competitive Proposal

Read the RFP & associated documents

- ✓ Consider requirements in terms of organizational capacity/needs
- Guidance: Review “Other” section RFP e.g., Compliance, Procurement, Quality Assurance.... “Ineligible Uses of Grant Funds” e.g., food, educational curriculum...

Sharply focus proposal narrative

- ✓ Priorities, problem, solution qualifications, community impact, sustainability
- ✓ Add a third-party reader

- Guidance: Full Proposal Tip Sheet
- Guidance: Metrics and Implementation

Action Tracking Guidance

Gather relevant letters of support/photos/ plans/permission

- Guidance: Letters of Support Best Practices



Requesting Feedback

LISFF 2023 Idea Feedback *Send to LISFF23@nfwf.org. Deadline 4/14*

- What is the problem to be addressed by the project and its relevance to restoration of the health and living resources of Long Island Sound?
- What is the solution to be pursued by the project? For example, major activities of the project.
- Where is the project located? For example, provide a site site or watershed or waterbody, and city/ state.
- What is the approximate size of the grant to be requested?
- Who will be the applicant organization?



Resources @ nfwf.org/lisff

RFP & associated documents

- Guidance: Review “Other” section RFP e.g., Compliance, Procurement, Quality Assurance.... “Ineligible Uses of Grant Funds” e.g., food, educational curriculum...

Proposal narrative

- Guidance: Full Proposal Narrative
- Guidance: Metrics and Implementation Action Tracking Guidance

Letters of support/photos/plans/permission

- Guidance: Letters of Support Best Practices

Budget

- Guidance: Detailed Budget Instructions
- Guidance: Full Proposal Tip Sheet
- Guidance: “Help” function in Easygrants

Metrics & Link to CCMP

- Guidance: Calculator Resources
- Guidance: *Metrics and Implementation Action Tracking Guidance*

Online System

- **Guidance: Full Proposal Tip Sheet**
- Guidance: “Help” function in Easygrants
- Guidance: Problems with Easygrants - easygrants@nfwf.org



Resources

- ✓ **Traffic Cop for your Assistance Requests or Questions**
 - LISFF23@nfwf.org
- ✓ **For projects in non-coastal CT, MA, NH & VT**
 - **Courtney Greene**
courtney@throwe-environmental.com



Timeline

Proposal idea feedback *no later than*
Wednesday, April 14nd

RFP open nfwf.org/lisff under
“Application Information”

Proposals Due
Thursday, May 10th 11:59PM EST!!

Review Summer/Fall 2023

Awards announced November 2023



QUESTIONS?

