



CHESAPEAKE WATERSHED INVESTMENTS FOR LANDSCAPE DEFENSE (WILD) GRANTS

2024 REQUEST FOR PROPOSALS

Full Proposal Due Date: *April 10, 2024 by 11:59pm Eastern Time*

OVERVIEW

The National Fish and Wildlife Foundation (NFWF), in partnership with the U.S. Fish and Wildlife Service (FWS), is soliciting proposals through the Chesapeake Bay Stewardship Fund (CBSF) to conserve, protect, and restore vital fish and wildlife habitat of the Chesapeake Bay and its tributary rivers and streams.

In 2024, NFWF estimates awarding up to \$8.5M in Chesapeake WILD Grants, contingent on available funding, for projects that enhance conservation, stewardship, and enhancements of fish and wildlife habitats and related conservation values in the Bay watershed. Major funding provided by FWS, along with important contributions by Altria Group, the U.S. Department of Agriculture Natural Resources Conservation Service, and the U.S. Forest Service.

NFWF and FWS are offering two distinct grant opportunities through the 2024 Chesapeake WILD Grants program. All proposals must clearly address how the proposed project will directly and measurably contribute to the accomplishment of **Chesapeake WILD PROGRAM PRIORITIES** (pg. 3). Further details on each grant opportunity can be found later in this Request for Proposals under **ELIGIBILITY CRITERIA** (pg.8) and **FUNDING AVAILABILITY AND MATCH** (pg. 10).

1. **WILD Implementation** grants of **\$75,000-\$750,000** will be awarded for projects that result in direct on-the-ground conservation, stewardship, and enhancements of fish and wildlife habitats and related conservation values in the Bay watershed.
2. **WILD Planning and Technical Assistance** grants **up to \$75,000** will be awarded for projects that enhance the capacity of local and regional partners to implement future on-the-ground actions conservation, stewardship, and enhancements of fish and wildlife habitats and related conservation values in the Bay watershed, through community-based assessment, planning, design, and other technical assistance-oriented activities.

In developing and submitting applications, prospective applicants should select the most appropriate CBSF program based on the details of their proposed project and alignment with associated program details. Applicants are encouraged to review the CBSF [Quick Reference Guide](#) and [Applicant Toolbox](#) for further insight in selecting the appropriate program based on their proposed project.

While NFWF does not require consultation prior to application, we strongly encourage interested applicants to schedule a proposal lab with NFWF staff or contact its [contracted field liaisons](#) to discuss their proposed project to gather constructive feedback in developing a



NFWF



competitive proposal and to obtain guidance on the most appropriate program and funding opportunity for project consideration. Interested applicants can [use this link](#) to schedule a proposal lab with NFWF staff.

GEOGRAPHIC FOCUS

All projects must occur wholly within the Chesapeake Bay watershed. NFWF has developed a [CBSF Applicant Toolbox](#) with resources to help applicants target proposed actions to understand and maximize outcomes and benefits for associated program priorities. Applicants are also encouraged to consult NFWF's Chesapeake Bay Business Plan [mapping portal](#) in informing potential geographic focus.



PROGRAM PRIORITIES

Consistent with broader goals to enhance diversity, equity, inclusion, and justice (DEIJ) in Chesapeake Bay watershed and habitat restoration and conservation efforts, NFWF and FWS will prioritize proposals that directly and meaningfully engage and involve local people and communities in the identification, prioritization, selection, and implementation of proposed conservation actions. Examples of direct and meaningful engagement and involvement include:

- Include community members and partners in co-design and co-implementation of projects
- Empower community members with knowledge or decision-making authority
- Ensure project teams include members representing and/or are a part of the community
- Including specific, active engagement strategies such as participation in Citizen Science, interactive workshops, hands-on learning activities, field trips, and volunteering
- Addressing a specific and localized harm such as pollution, flooding, fires
- Create jobs in the target community or perform job training and certification
- Directly engage in specific cultural activities with the community

Proposals from applicants or partnerships directly representing or resourcing historically underserved people and communities will receive priority consideration. To ensure a broad spectrum of community interests are represented and reflected in proposed activities, we explicitly encourage applications from (or ones that incorporate) community-based organizations as key project partners, regardless of an environmental or conservation-related mission. Furthermore, NFWF encourages more traditional environmental and conservation organizations and entities to use grant funding to enhance their internal capacity to engage with, mentor, and support diverse community partners. See [a glossary of key terms](#) related to DEIJ efforts under the NFWF's Chesapeake Bay Stewardship Fund.

Developed by FWS in partnership with NFWF, [Chesapeake Conservation Partnership](#), and others, **Chesapeake WILD Grants** is a competitive grant program that responds to a partner-identified need for coordinated action to restore, conserve, and protect a resilient and connected landscape



of healthy lands and waters across the Chesapeake Bay watershed. Funding awards support projects to address 5 interrelated program pillars or priority areas (see below figure). Chesapeake WILD Program grant priorities are consistent with the [Chesapeake WILD Framework](#), NFWF's [Chesapeake Bay Business Plan](#), and Chesapeake Bay Program partnership's 2014 [Chesapeake Bay Watershed Agreement](#).

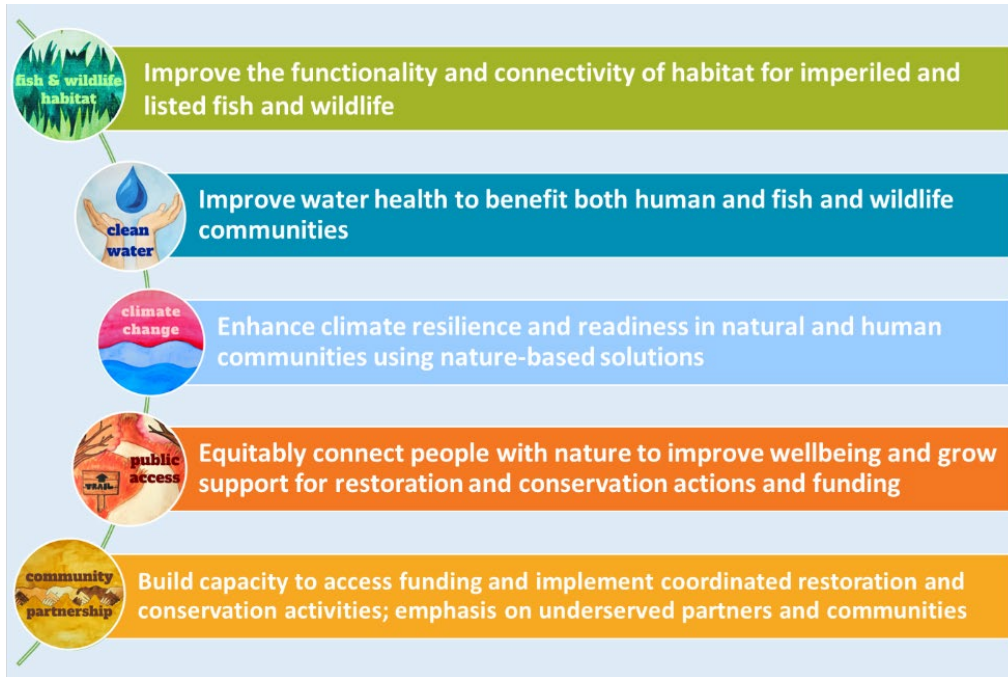


Figure 1. Chesapeake WILD Program Pillars

NFWF is soliciting proposals that align with one or more of the interrelated program pillars or priority areas. All proposals must clearly address how projects will directly and measurably contribute to the accomplishment of **Chesapeake WILD Program Pillars** enumerated below. Selection priority will be given to projects that include diverse partnerships who will collaboratively address one or more priority areas.

Regardless of priority area, we encourage proposals that (1) leverage other funding opportunities to strengthen public-private partnerships in support of actions to connect, conserve, and restore wildlife habitats and/or (2) demonstrate nature-based benefits to underrepresented and/or historically underserved human communities.

WILD PROGRAM PILLAR 1: FISH AND WILDLIFE HABITAT

Chesapeake Bay watershed is the country's largest estuary and a mosaic of culturally and ecologically important natural resources: headwater creeks and streams flow into large rivers, intact forests and forested riparian buffers, grasslands and pollinator habitat, freshwater wetlands, tidal marshes, and submerged aquatic vegetation.

Proposals that aim to restore, conserve, steward, and/or enhance important Chesapeake Bay watershed habitats and ecosystems for imperiled fish and wildlife are preferred. Proposals that



enhance, connect, or expand existing habitat hubs and travel corridors for imperiled fish and wildlife are highly encouraged.

For the purposes of the Chesapeake Wild Program, **imperiled species** are fish, wildlife, invertebrate, and plant species of concern dependent upon important Chesapeake Bay watershed habitats and living resources, including:

- Federal designated At-Risk Species (ARS) and/or Endangered Species Act (ESA) listed species;
- Species identified in tribal stewardship or fish and wildlife plans; and
- Species identified in State designated Species of Greatest Conservation Need (SCGN) in State Wildlife Action Plans (SWAPs) and Regional SCGN (NE Association of Fish & Wildlife Agencies)

Competitive proposals should address (1) how the proposed activities will contribute toward the improved conservation of the priority fish and wildlife and habitats, (2) how project efficacy will be measured or monitored [refer to **APPENDIX C: PROPOSAL METRICS** (pg. 27) for suggested metrics], and (3) how any potential adverse impacts will be addressed and mitigated.

Proposal narratives should incorporate conservation action recommendations consistent with Federal, Tribal, or State habitat conservation or species recovery plans, or with actions listed for the species within state wildlife action plans, NFWF's Business Plan, and/or fish and wildlife habitats identified as important by Chesapeake Bay Program. Prior coordination with and letters of support from Federal, Tribal, and/or State fish and wildlife representatives are highly encouraged.

*See **Appendix A** for information resources and links for priority fish and wildlife, including examples of conservation actions eligible for funding.*

Examples of non-regulatory projects that align with Chesapeake WILD Program Pillar 1:

- Build organizational and community capacity to strengthen the ability of Tribes, Indigenous people of the Chesapeake, and people or communities of color to advance self-determined fish and wildlife habitat conservation, restoration, and stewardship activities and culturally appropriate ways to connect people and communities with living resources. For instance, provide expertise or training in conservation and restoration science and/or spatial science, organizational development and partnership management, and/or grant writing and administration responsibilities.
- Permanently conserve (e.g., easement) high-value lands and waterways that connect and enhance habitats for imperiled fish and wildlife; especially, those identified in respective conservation plans.
- Design and build, restore, or reconnect aquatic and terrestrial wildlife travel corridors and passages that imperiled fish and wildlife.
- Restore habitat structures and ecological functions to terrestrial and aquatic habitat systems.



NFWF



- Deliver expertise and technical assistance to implement habitat management best practices, such as managing invasive species, creating forested riparian buffers, tidal and non-tidal wetland restoration, and floodplain and stream/river reconnection.
- Address science and research gap needs to effectively connect, conserve, and restore habitat quality and resiliency for imperiled fish and wildlife.
- Address science and research gap needs identified in respective imperiled fish and wildlife conservation plans, including surveys, propagation, and monitoring.
- Direct community/people outreach and involvement activities that result in conservation benefits to imperiled fish and wildlife, such as Citizen Science data collection and/or co-developing conservation plans and shared implementation of conservation actions.

WILD PROGRAM PILLAR 2: CLEAN WATER

Over 18 million live in the Chesapeake Bay watershed and about 75% get their drinking water from rivers and streams that flow into the Bay through three primary river systems: Susquehanna (New York, Pennsylvania, and Maryland), Potomac (Maryland), and James (Virginia). The rivers and their tributaries also support a diverse suite of fish and wildlife that depend on high quality water.

Examples of non-regulatory projects that align with Chesapeake WILD Program Pillar 2:

- Prioritize floodplain reconnection and restoration actions that provide direct benefit for fish and wildlife, as well as flood mitigation and water quality benefits to human and wildlife communities.
- Emphasize water conservation and management measures with direct benefits to imperiled fish and wildlife.
- Support water quality monitoring programs and outreach campaigns to promote clean water for fish and wildlife and empower local community scientists across rural, urban, and Tribal areas within the watershed.
- Complete instream restoration and streambank stabilization projects to enhance habitat, increase nutrient processing, and reduce erosion, sedimentation, and flooding impacts.
- Reconnect stream channels to historic floodplains and adjacent wetlands to promote nutrient removal and reduce erosion.
- Planning projects that result in shovel-ready designs for nature-based solutions, living shorelines, bioswales, and other designs that will improve water quality, mitigate pollution, and provide valuable habitats for fish and wildlife.

WILD PROGRAM PILLAR 3: CLIMATE CHANGE

Enhancing the resilience of the Chesapeake Bay ecosystem to future climate change impacts requires design and install nature-based solutions that restore or expand natural features such as coastal marshes and wetlands, dune and beach systems, oyster reefs, forests, stream channels, floodplains, and forested buffers, which minimize the impacts of storms and other naturally occurring events on nearby communities and maximize benefits to fish and wildlife. Generally,

this does not include green stormwater infrastructure, which can be funded through companion CBSF programs.

Examples of non-regulatory projects that align with Chesapeake WILD Program Pillar 3:

- Projects that protect, restore, or reconnect important natural habitats for imperiled species that may be negatively impacted by climate change.
- Plan for and equitably engage partners and communities to improve natural disaster tolerances for people, as well as for fish and wildlife, adapting to a changing climate.
- Establish local finance authorities to focus on resilience, conservation, and investment planning activities to further long-term imperiled species habitat resilience efforts, including (but not limited to) efforts aligned with nature-based solutions that support protection and resilience for human communities.
- Emphasize habitats that help protect coastal and inland communities from the impacts of storms, floods, and other natural hazards and enable them to recover more quickly (e.g., tidal marshes, nontidal wetlands, forested riparian areas, and floodplains); especially, habitats that benefit rural, urban, and Tribal communities by reducing nuisance flooding and decreasing stormwater runoff using nature-based solutions.
- Replace or right-size culverts or otherwise improve road and stream crossings to reduce downstream erosion of nutrients and minimize flooding.

WILD PROGRAM PILLAR 4: PUBLIC ACCESS

Because of its location within a densely populated part of the country, the Chesapeake Bay watershed offers diverse mountains-to-sea outdoor recreation opportunities to millions of people. Chesapeake WILD Program supports projects that enable equitable recreational endeavors of communities through traditional and non-traditional outdoor experiences to improve people's physical and mental health. Funded projects should be compatible with the conservation of natural resources and habitat needs of imperiled fish and wildlife species.

Successful applications must integrate proposed public access activities that equitably connect people with nature and enhance awareness and engagement with ongoing fish and wildlife habitat conservation and restoration efforts.

Examples of non-regulatory projects that align with Chesapeake WILD Program Pillar 4:

- Prioritize actions and investments that make public lands and open spaces more welcoming and accessible to diverse communities and user groups.
- Develop new low or no-cost public access points and wildlife-associated recreation opportunities in the watershed through collaborative projects and programs that involve underserved communities.
- Increase equitable public access and participation in wildlife-associated recreation activities (e.g., hunting, fishing, wildlife viewing) using fee simple purchase or permanent conservation easement.



NFWF



- Increase public awareness of the recreational, educational, and economic contributions made by the Chesapeake Bay and its ecosystems through experiential learning and actions to strengthen stewardship ethic by involving place-based or local communities in fish and wildlife habitat connectivity, conservation, and restoration planning and implementation.
- Create new or enhance existing interpretive programming focused on the watershed's natural history, especially emphasizing traditional, place-based, and/or Tribal Knowledge and Indigenous Science.
- Invest in nature-based recreation infrastructure and maintenance that directly supports equitable access for urban and rural communities to networked trail systems (e.g., greenway and blueway recreational trails).
- Create innovative public access, education, and cultural reconnection opportunities for rural, urban, and Tribal communities.
- Incorporate volunteer opportunities or lead to job creation; especially ones that hire locally and/or minority-owned businesses/contractors.

WILD PROGRAM PILLAR 5: COMMUNITY PARTNERSHIP

Achieving a shared vision for a healthy and connected network of lands and waters requires investments in collaboration and community partnerships, including building the capacity of organizations, communities, and people to engage in and support conservation actions that restore, conserve, steward, and/or enhance important Chesapeake Bay watershed habitats and ecosystems for imperiled fish and wildlife.

Examples of non-regulatory projects that align with Chesapeake WILD Program Pillar 5:

- Capacity-building, organizational development, community engagement, and outreach for Tribal and Indigenous peoples and historically underserved communities in the Chesapeake Bay watershed.
- Enhance existing conservation partnerships or develop new partnerships that will evolve projects, further social equity, develop different ways of thinking, and spur innovative conservation actions and implementation.
- Enhance partner capacity to provide technical assistance and deliver habitat connectivity, conservation, and restoration outcomes for imperiled fish and wildlife.
- Enhance community and organizational capacity to coordinate imperiled fish and wildlife conservation across jurisdictions and landscapes, with an emphasis on involving underserved communities and organizations serving underserved communities.
- Build organizational and community capacity to strengthen the ability of Tribes, Indigenous people of the Chesapeake, and people or communities of color to self-determine the conservation and enhancement of fish and wildlife habitats they steward, and culturally appropriate ways to connect people and communities with living resources. For instance, provide expertise or training in conservation and restoration



science and/or spatial science, organizational development and partnership management, and/or grant writing and administration responsibilities.

- Community led or co-created and co-implemented by community members.
- Directly engaging in specific cultural activities with the community.
- Active engagement and experiential learning strategies such as workshops, field-based activities, Citizen Science data collection and monitoring, and volunteering.

PROJECT METRICS

To better gauge progress on individual grants and to ensure greater consistency of project data provided by multiple grants, the Chesapeake Bay Stewardship Fund has a list of metrics in *Easygrants* for proposal applicants to choose from for future reporting. For implementation projects, awardees will be required to report both project-level metrics via *Easygrants* and more detailed site and practice-level data via [FieldDoc](#) (see below for additional details), as applicable.

We ask that applicants select only the most relevant metrics from the list for their project (all possible program metrics are shown in the table in **APPENDIX C: PROPOSAL METRICS (pg. 27)**).

If you do not believe an applicable metric has been provided, please contact Jake Reilly at jake.reilly@nfwf.org, Tori Sullens at tori.sullens@nfwf.org to discuss acceptable alternatives.

ELIGIBILITY

Eligible Organizations	WILD Implementation	WILD-PTA
501(C) non-profit organizations	✓	✓
Community based organizations	✓	✓
Local Governments	✓	✓
Municipal governments	✓	✓
Tribal governments and organizations	✓	✓
K-12 educational institutions	✓	✓
U.S. Federal Government agencies	✓	✓
State Government Agencies	✓	✓
Institutions of higher education	✓	✓



NFWF



Eligible Organizations	WILD Implementation	WILD-PTA
Businesses	✗	✗
Unincorporated Individuals	✗	✗
International Organizations	✗	✗

For Planning and Technical Assistance proposals: Non-profit organizations, local and municipal governments, Tribal governments and organizations and K-12 education institutions seeking potential service providers may visit [our website](#) for an updated listing of technical service providers operating in the region. State government agencies and institutions of higher education are eligible to apply for Planning and Technical Assistance proposals but must document support and/or request for proposed activities by appropriate non-profit organizations, local and municipal governments, Tribal governments and organizations and/or K-12 education institutions.

Ineligible Uses of Grant Funds

- **Equipment:** Applicants are encouraged to rent equipment where possible and cost-effective or use matching funds to make those purchases. NFWF acknowledges, however, that some projects may only be completed using NFWF funds to procure equipment. If this applies to your project, please contact the program staff listed in this RFP to discuss options.
- Federal funds and matching contributions may not be used to procure or obtain equipment, services, or systems (including entering into or renewing a contract) that uses telecommunications equipment or services produced by Huawei Technologies Company or ZTE Corporation (or any subsidiary or affiliate of such entities) as a substantial or essential component, or as critical technology of any system. Refer to Public Law 115-232, section 889 for additional information.
- NFWF funds and matching contributions may not be used to support political advocacy, fundraising, lobbying, litigation, terrorist activities or Foreign Corrupt Practices Act violations.
- NFWF funds may not be used to support ongoing efforts to comply with legal requirements, including permit conditions, compensatory mitigation and settlement agreements. However, grant funds may be used to support projects that enhance or improve upon baseline legal and permit compliance efforts (e.g., Projects that go above and beyond minimum legal compliance benefitting both stormwater management and fish and wildlife habitat).



FUNDING AVAILABILITY AND MATCH

NFWF estimates awarding \$8.5 million in grants through the combined **WILD Program** in 2024. Match expended on or after January 1, 2024 is considered eligible under the Chesapeake WILD Grants program.

	WILD Implementation	WILD-PTA
Project Award Range	\$75,000 – 750,000	Up to \$75,000
Match Requirement	1:1*	Encouraged, but not required

* Up to 50% of **Implementation** grants match requirement may be met through federal match from non-Department of Interior sources.

All proposed projects must begin on or after September 1, 2024, to facilitate necessary grant contracting, quality assurance, and environmental compliance activities. In order to qualify, match must be expended during the proposed period of performance.

EVALUATION CRITERIA

All proposals will be screened for relevance, accuracy, completeness, and compliance with NFWF and funding source policies. Proposals will then be evaluated uniquely based on the extent to which they meet the following criteria:

Criteria #1 – Conservation Outcomes

- **Implementation:** Project will clearly and demonstrably result in meaningful on-the-ground implementation of conservation and/or restoration actions that contribute to one or more of the identified program priorities. Where possible and appropriate, the proposal simultaneously contributes measurable and meaningful implementation actions supporting multiple priority outcomes.
- **PTA:** Project will result in the delivery of planning and technical assistance products and services that meaningfully advance potential conservation or restoration implementation efforts that would contribute to one of more of the identified program priorities. In considering who benefits from requested services, there is a demonstrated need for services and a clear commitment to utilize services to support future implementation efforts.
- **All Funding Opportunities:** Project incorporates meaningful engagement of affected communities, furthers established community interests, and incorporates community members and stakeholders in project activities.
- **All Funding Opportunities:** Project supports new and existing partnerships working to advance conservation and restoration actions in the Chesapeake Bay watershed.



NFWF



- **All Funding Opportunities:** Project incorporates plans and approaches to implement, verify and sustain conservation and restoration actions and outcomes beyond the timeframe of the grant.

Criteria #2 – Partnership and Community Impact

- The applicant organization partners and engages collaboratively with diverse local community members, leaders, community-based organizations, and other relevant stakeholders to develop and implement the proposed project. This ensures long-term sustainability and success of the project, integration into local programs and policies, and community acceptance of proposed restoration actions.
- Non-traditional partners or communities are enlisted to broaden the sustained impact from the project.
- Community characteristics of the project area are described, any communities impacted are identified, outreach and community engagement activities are described, as well as how those will be monitored and measured.
- Proposal uses demographic data to support descriptions and includes letters of support from community partners and/or collaborators demonstrating their commitment to the project and engagement in project activities as proposed.

Criteria #3 – Budget

- The quality and level of detail in the budget and budget narrative provide a clear and detailed understanding of the proposed funding request.
- Proposal demonstrates cost-effectiveness in achieving its proposed outcomes, considering both direct and indirect costs in the proposed budget.
- Proposed costs are reasonable based on the work plan, local or regional costs for similar activities, and commensurate with project outcomes.
- Budget clearly indicates the degree of partnership in conducting the proposed work, including funding for project partners, stakeholders, and community members, as appropriate.
- Proposed funding request is well leveraged by the partners and other contributors through cash-, in-kind, and other match.
- The federal government has determined that a de minimis 10% indirect rate is an acceptable minimum for organizations without a negotiated indirect cost rate agreement (NICRA), as such NFWF reserves the right to scrutinize ALL proposals with indirect rates above 10% for cost-effectiveness.

Criteria #4 – Technical

- Project is technically sound and feasible, and the proposal sets forth a clear, logical, and achievable work plan, milestones, and timeline. All proposed projects must begin on or after September 1, 2024 to facilitate necessary grant contracting and quality assurance activities.



NFWF



- Project engages appropriate technical experts throughout project planning, design and implementation to ensure activities are technically sound and feasible. Proposal demonstrates an understanding of necessary permitting and environmental compliance requirements and the ability to obtain necessary approvals consistent with the proposed work plan and timeline.
- Applicant organization has demonstrated an ability to manage and implement similar projects on time and within budget.

OTHER

Compliance Requirements – Projects selected may be subject to requirements under the National Environmental Policy Act, Endangered Species Act (state and federal), and National Historic Preservation Act. Documentation of compliance with these regulations must be approved prior to initiating activities that disturb or alter habitat or other features of the project site(s). Applicants *must* budget time and resources to obtain the needed approvals. As may be applicable, successful applicants may be required to comply with additional Federal, state, or local requirements and obtain all necessary permits and clearances.

Nutrient and Sediment Load Reductions – All projects proposing to implement water quality improvements for the purposes of nutrient and sediment load reduction must provide credible estimates of associated load reduction outcomes. To assist applicants, NFWF has partnered with the Chesapeake Commons to develop [FieldDoc](#), a tool that allows for consistent planning, tracking, and reporting of water quality improvement activities and associated nutrient and sediment load reductions from proposed grant projects.

FieldDoc currently includes functionality for a significant share of water quality improvement practices approved by the CBP for the purposes of TMDL crediting. NFWF expects all projects proposing to implement on-the-ground water quality improvements to utilize FieldDoc to calculate estimated load reductions included in their application. When setting up proposed projects in FieldDoc, please be sure to list your application's 5-digit Easygrants number in the FieldDoc project title.

Upon grant award, NFWF will require all projects submitted under this solicitation to utilize FieldDoc for tracking and reporting of applicable water quality improvement activities during the course of their grant project. For technical support on FieldDoc utilization during the proposal development process, please contact the Commons at support@chesapeakecommons.org. Further help documentation can be found on our [website](#).

Practice Specifications – Unless otherwise noted, all water quality improvement practices implemented must conform to established and recognized standards and practice specifications (e.g., [NRCS practice standards](#), state stormwater manuals and retrofit guidance, approved [CBP BMP Expert Panel reports](#)). Applicants must note where proposed practices will deviate from established standards and provide reasonable justification for why an alternative is necessary.



NFWF



Monitoring – NFWF may implement independent monitoring efforts in the future to measure the environmental outcomes from projects funded under this solicitation. Award recipients may be asked to facilitate granting of access to project sites for NFWF or its designees for future environmental monitoring purposes. Applicant implementing community and/or habitat resilience are encouraged to review NFWF’s broader [resilience monitoring approaches](#), standard metrics and protocols in building their own potential resilience monitoring activities.

Applicant Demographic Information – In an effort to better understand diversity in our grantmaking, NFWF is collecting basic demographic information on applicants and their organizations via a voluntary survey form (available in Easygrants). This information will not be shared externally or with reviewers and will not be considered when making grant decisions. For more details, please see the tip sheet and the Uploads section of Easygrants.

Budget – Costs are allowable, reasonable and budgeted in accordance with NFWF’s [Budget Instructions](#) cost categories. Federally-funded projects must be in compliance with [OMB Uniform Guidance](#) as applicable.

Environmental Services – NFWF funds projects in pursuit of its mission to sustain, restore and enhance the nation's fish, wildlife, plants and habitats for current and future generations. NFWF recognizes that some benefits from projects may be of value with regards to credits on an environmental services market (such as a carbon credit market). NFWF does not participate in, facilitate, or manage an environmental services market nor does NFWF assert any claim on such credits.

Intellectual Property – Intellectual property created using NFWF awards may be copyrighted or otherwise legally protected by award recipients. NFWF may reserve the right to use, publish, and copy materials created under awards, including posting such material on NFWF’s website and featuring it in publications. NFWF may use project metrics and spatial data from awards to estimate societal benefits that result and to report these results to funding partners. These may include but are not limited to: habitat and species response, species connectivity, water quality, water quantity, risk of detrimental events (e.g., wildfire, floods), carbon accounting (e.g., sequestration, avoided emissions), environmental justice, and diversity, equity, and inclusion.

Matching Contributions – Matching Contributions consist of cash, contributed goods and services, volunteer hours, and/or property raised and spent for the Project during the Period of Performance. Larger match ratios and matching fund contributions from a diversity of partners are encouraged and will be more competitive during application review.

Procurement – If the applicant chooses to specifically identify proposed Contractor(s) for Services, an award by NFWF to the applicant does not constitute NFWF’s express written authorization for the applicant to procure such specific services noncompetitively. When procuring goods and services, NFWF recipients must follow documented procurement procedures which reflect applicable laws and regulations.



NFWF



Publicity and Acknowledgement of Support – Award recipients will be required to grant NFWF the right and authority to publicize the project and NFWF’s financial support for the grant in press releases, publications and other public communications. Recipients may also be asked by NFWF to provide high-resolution (minimum 300 dpi) photographs depicting the project.

Receiving Award Funds – Award payments are primarily reimbursable. Projects may request funds for reimbursement at any time after completing a signed agreement with NFWF. A request of an advance of funds must be due to an imminent need of expenditure and must detail how the funds will be used and provide justification and a timeline for expected disbursement of these funds.

Permits – Successful applicants will be required to provide sufficient documentation that the project expects to receive or has received all necessary permits and clearances to comply with any Federal, state or local requirements. Where projects involve work in the waters of the United States, NFWF strongly encourages applicants to conduct a permit pre-application meeting with the Army Corps of Engineers prior to submitting their proposal. In some cases, if a permit pre-application meeting has not been completed, NFWF may require successful applicants to complete such a meeting prior to grant award.

Federal Funding – The availability of federal funds estimated in this solicitation is contingent upon the federal appropriations process. Funding decisions will be made based on level of funding and timing of when it is received by NFWF.

TIMELINE

Dates of activities are subject to change and contingent on the availability of funding. Please check the Program page of the NFWF website for the most current dates and information (<http://www.nfwf.org/chesapeake>).

Applicant Webinar (Registration)	Tuesday, February 20 th , 10:00am ET
FieldDoc Webinar (Registration)	Thursday, February 15 th , 10:00am ET
Proposal Due Date	Wednesday, April 10 th , 11:59pm ET
Proposal Review Period	April – August
Awards Announced	September (anticipated)

HOW TO APPLY

All application materials must be submitted online through National Fish and Wildlife Foundation’s Easygrants system.

1. Go to easygrants.nfwf.org to register in our Easygrants online system. New users to the system will be prompted to register before starting the application (if you already are a registered user, use your existing login). Enter your applicant information. Please disable the pop-up blocker on your internet browser prior to beginning the application process.



2. Once on your homepage, click the “Apply for Funding” button and select this RFP’s “Funding Opportunity” from the list of options.
3. Follow the instructions in Easygrants to complete your application. Once an application has been started, it may be saved and returned to at a later time for completion and submission.

APPLICATION ASSISTANCE

A *Tip Sheet* is available for quick reference while you are working through your application. This document can be downloaded at <http://www.nfwf.org/chesapeake>.

Additional information to support the application process can be accessed on the NFWF website’s [Applicant Information](#) page.

For more information or questions about this RFP, please contact Jake Reilly (jake.reilly@nfwf.org) or Tori Sullens (tori.sullens@nfwf.org) via e-mail.

For issues or assistance with our online Easygrants system, please contact:

Easygrants Helpdesk

- Email: Easygrants@nfwf.org
- Voicemail: 202-595-2497
- Hours: 9:00 am to 5:00 pm ET, Monday-Friday.
- Include: your name, proposal ID #, e-mail address, phone number, program you are applying to, and a description of the issue.

APPLICATION AND PROPOSAL TECHNICAL ASSISTANCE

A *Tip Sheet* is available for quick reference while you are working through your application. This document can be downloaded at <http://www.nfwf.org/chesapeake>. Additional information to support the application process can be accessed on the NFWF website’s “Applicant Information” page (<http://www.nfwf.org/whatwedo/grants/applicants/Pages/home.aspx>). Please disable the pop-up blocker on your internet browser prior to beginning the application process.

NFWF also offers on-demand, field-based project and partnership development support through [field liaisons](#), providing broad geographic coverage across the Bay region for agricultural conservation, urban stormwater management, wetland and watershed science, and habitat experience and expertise relevant to Bay restoration goals. Applicants may also contact these field liaisons using the information below to discuss potential projects:

Liaison Contact	Email	Phone	Sector Expertise
Kristen Saacke Blunk	kristen@headwaters-llc.org	(814) 360-9766	• All Sectors
Sarah Clark	sarah@icl.org	(240) 472-1772	• Partnerships and Collaborative Leadership
Kristen Hughes Evans	kristen@susches.org	(804) 554-3403	• Agricultural Conservation
Liz Feinberg	liz.feinberg63@gmail.com	(610) 212-2345	• All Sectors



NFWF



Liaison Contact	Email	Phone	Sector Expertise
David Hirschman	dave@hirschmanwater.com	(434) 409-0993	<ul style="list-style-type: none">• Stormwater/Urban Sector
Katie Ombalski	katie@woodswaters.com	(814) 574-7281	<ul style="list-style-type: none">• Agricultural Conservation• Habitat Restoration

Appendix A

Priority Fish and Wildlife

NFWF is soliciting proposals that restore, conserve, steward, and enhance important Chesapeake Bay watershed habitats and ecosystems for imperiled fish and wildlife.

For the purposes of the Chesapeake Wild Program, **imperiled species** are fish, wildlife, invertebrate, and plant species of concern dependent upon important Chesapeake Bay watershed habitats and living resources, including:

- Federal designated At-Risk Species (ARS) and/or Endangered Species Act (ESA) listed species;
- Species identified in tribal stewardship or fish and wildlife plans; and
- Species identified in State designated Species of Greatest Conservation Need (SCGN) in State Wildlife Action Plans (SWAPs) and Regional SCGN (NE Association of Fish & Wildlife Agencies)

Proposal narratives should incorporate conservation action recommendations consistent with Federal, Tribal, or State habitat conservation or species recovery plans, or with actions listed for the species within state wildlife action plans, NFWF's Business Plan, and/or fish and wildlife habitats identified as important by Chesapeake Bay Program. Below are information resources and links to help inform competitive grant proposals, including examples of priority conservation actions eligible for funding. While this is not an exhaustive list of resources that could be included as supportive information in a proposal narrative, it does provide easy access to enough information to guide competitive project proposals.

Federal resources

Table 1 (below) contains federal information and conservation plan resources for the following priority at-risk fish and wildlife in the Chesapeake Bay watershed.

- Chesapeake logperch
- Diadromous Fishes (river herring: American shad, alewife, blueback herring)
- Eastern regal fritillary
- Forest songbirds (golden-winged warbler, cerulean warbler, wood thrush)
- Freshwater mussels (brook floater, yellow lamp mussel, Tidewater mucket, green floater)
- Northeast turtles (bog turtle, Eastern box turtle, Northern diamondback terrapin, spotted turtle, wood turtle)
- Saltmarsh sparrow

Additionally, to identify the potential for rare species or ecosystems on project sites, applicants may find the [USFWS Information for Planning and Consultation tool](#) useful for planning purposes (note that formal environmental review may also be required).

Tribal resources

There are 7 federally recognized Tribes in the Chesapeake Bay watershed, each is a Sovereign government and should be individually consulted about fish and wildlife conservation action recommendations consistent with their respective stewardship or habitat conservation and management plans:

- [Chickahominy Indian Tribe](#), Providence Forge, VA
- [Chickahominy Indians Eastern Division](#), Providence Forge, VA
- [Monacan Indian Nation](#), Amherst, VA
- [Nansemond Indian Nation](#), Suffolk, VA
- [Pamunkey Indian Tribe](#) King William, VA
- [Rappahannock Tribe](#), Indian Neck, VA
- [Upper Mattaponi Indian Tribe](#), King William, VA

Additional national and spatial Tribal natural resources information:

- [Native American Fish and Wildlife Society](#)
- [Native Land Information System](#), a repository of learning resources, information, and data to help defend and protect Native lands for the benefit of Native people.

State resources

NE Association of Fish and Wildlife Agencies (NEAFWA) [Fish & Wildlife Diversity Technical Committee](#):

- [NE Regional Conservation Needs](#) database of final reports
- [Regional Species of Greatest Conservation Need \(2023\)](#) database

For more information about conservation action recommendations consistent with their respective habitat conservation or species recovery plans, or with actions listed within State Wildlife Action Plans:

[D.C.](#)

[Maryland](#)

[Pennsylvania – Game](#)

[West Virginia](#)

[Delaware](#)

[New York](#)

[Virginia](#)

Additional priority fish and wildlife resources

Eastern brook trout and American Black Duck are priority wildlife identified in the following plans and tools:

- [National Fish and Wildlife Business Plan](#)
- [Chesapeake Bay Program Habitat Goal Implementation Team](#)
- American black duck decision support tool for [Chesapeake Bay priority watersheds](#)



- Atlantic Coast Joint Venture [ACJV coastal restoration project inventory](#), a data dashboard to explore current and past coastal projects to conserve or restore habitat for saltmarsh sparrow, black rail, and black duck
- Multiple Eastern brook trout decision support tools and mapper tools from [Eastern Brook Trout Joint Venture](#)

Table 1. Federal information resources for priority fish and wildlife in the Chesapeake Bay watershed. For state specific habitat conservation or species recovery recommendations, refer to individual State Wildlife Action Plans.

Priority Federal Fish and Wildlife in the Chesapeake Bay Watershed	Priority Actions Eligible for Funding	Conservation or Recovery Plan Links and Priority Locations	Decision-Support or Prioritization Tool Links
<p>Chesapeake logperch</p>	<p><i>Implementation and on-the-ground conservation actions:</i> (1) improve riparian habitats and water quality through streambank fencing, instream restoration, dam removal, culvert replacements, vegetative buffer strip installation, riparian buffer restoration, streambank stabilization, and floodplain restoration and revegetation.</p> <p><i>Expertise and technical support:</i> (1) cross-jurisdictional species and habitat management planning and coordination capacity, (2) partner and community engagement, communication, and involvement.</p> <p><i>Science and research:</i> (1) species research, population surveys, and monitoring, (2) habitat restoration research, survey, and monitoring.</p>	<p>Species of Greatest Conservation Need in Pennsylvania and Maryland Wildlife Action Plans (see links under ‘State resources’)</p>	<p>USFWS’s Chesapeake Logperch information website</p> <p>Fact sheet Pennsylvania Species Action Plan</p>
<p>Diadromous Fishes: river herring (American shad, alewife, blueback herring)</p>	<p><i>Implementation and on-the-ground conservation actions:</i> (1) provide alternative fish passage, (2) remove passage barriers, (3) restore, enhance, and/or connect riparian habitat adjacent to freshwater streams, (4) permanent conservation of forested riparian habitat adjacent to freshwater streams.</p>	<p>Locations: Contact state wildlife agency biologists for specific location information</p>	<p>Chesapeake Bay Program’s Fish Passage Work Group webpage with links to management plans and other recommendations</p> <p>Chesapeake Bay Program’s Fish Passage</p>



	<p><i>Expertise and technical support:</i> (1) engage dam owners/operators and communities to increase awareness of fish passage needs and the importance of native fish populations and habitat connections.</p> <p><i>Science and research:</i> (1) species research, population surveys, and monitoring, (2) habitat restoration research, survey, and monitoring.</p>		<p>Prioritization Tool to assess potential outcomes</p>
<p>Eastern regal fritillary</p>	<p><i>Implementation and on-the-ground conservation actions:</i> (1) grassland habitat restoration and enhancement, (2) create new habitat of diverse grassland dominated by native herbaceous vegetation.</p> <p><i>Expertise and technical support:</i> (1) cross-jurisdictional species and habitat management planning and coordination capacity, (2) partner and community engagement, communication, and involvement.</p> <p><i>Science and research:</i> (1) Citizen Science efforts to captive rear, release, and monitor Regal fritillary to fill science/data gaps.</p>		<p>US Forest Service article about fritillary pollinators</p> <p>Pennsylvania Dept. of Military Veteran Affairs Regal Fritillary Fact Sheet</p>
<p>Pollinators: American bumble bee, Monarch, rusty patched bumble bee</p>	<p><i>Implementation and on-the-ground conservation actions:</i> (1) ??</p> <p><i>Expertise and technical support:</i> (1) cross-jurisdictional species and habitat management planning and coordination capacity, (2) partner and community engagement, communication, and involvement.</p> <p><i>Science and research:</i> (1) species research, population surveys, and monitoring, (2) habitat restoration research, survey, and monitoring.</p>	<p>NRCS American Bumble Bee Fact Sheet with habitat and restoration recommendations</p> <p>Focal areas: farmland, grassland, urban gardening/farming</p>	<p>Center for Pollinator Conservation USFWS Pollinator information website</p> <p>USFWS Monarch information website</p> <p>USFWS Bumble Bee information website</p> <p>USFWS Rusty Patched Bumble Bee information website</p> <p>USGS Native Bee Inventory and Monitoring Program information website</p>



<p>Forest songbirds: Golden-winged warbler, Cerulean warbler, wood thrush</p>	<p><i>Implementation and on-the-ground conservation actions:</i> (1) forest habitat restoration, enhancement, and improved connectivity, (2) permanent conservation of headwater and high elevation forest habitat, including forested riparian areas.</p> <p><i>Expertise and technical support:</i> (1) trained foresters or biologists: to assist with developing forest management guidelines that integrate habitat needs of the priority species in a way that makes sense to foresters and will be easy for them to implement when developing prescriptions. (2) trained communication and outreach practitioners: to engage with property owners, foresters, and partnering organizations in focal areas and generate interest in participating in improving forest habitat for at-risk birds. (3) facilitators: to help with team coordination and organization. (4) scientists to help design species and conservation monitoring and assessment protocols: develop monitoring strategies and specific monitoring designs to gather more data on forest bird responses to forest habitat management.</p> <p><i>Science and research:</i> (1) Collection of more survival data to estimate both annual and seasonal survival of all three priority songbird species, especially for females. (2) evaluating the site-level and landscape-level responses of forest songbirds to forest management activities, especially monitoring associated with implementing forest songbird best management practices. Important parameters include occupancy, estimated abundance,</p>	<p>Existing focus areas developed by the Appalachian Mountains Joint Venture and Golden-winged Warbler Working Group.</p>	<p>Wood thrush landscape capability models</p> <p>Breeding habitat management guidelines for Cerulean Warblers</p>
--	---	---	--



	<p>and reproductive success, and (3) assess non-breeding habitat use of different forest types and landscape configurations on the wintering grounds for all three focal species. Important parameters include occupancy, estimated abundance, measures of body condition (e.g., weight, fat reserves, endocrine profiles), and seasonal survival.</p>		
<p>Freshwater mussels: Brook floater, Yellow lampmussel, Tidewater mucket, green floater, and associated fishes (e.g., American eel)</p>	<p><i>Implementation and on-the-ground conservation actions:</i> (1) habitat restoration, enhancement, and improved connectivity actions identified in Plans. (2) improve fish passage through dam and barrier removal</p> <p><i>Expertise and technical support:</i> (1) conservation area designation planning and coordination, (2) techniques development, (3) assistance with environmental review and permitting processes, (4) species and habitat management planning and coordination, (5) partner and community engagement, communication, and involvement.</p> <p><i>Science and research:</i> (1) species propagation and reintroduction research, survey, and monitoring, (2) habitat restoration research, survey, and monitoring.</p>	<p>Locations: Contact state wildlife agency biologists for specific location information</p>	
<p>Northeast turtles: bog turtle, Eastern box turtle, Northern diamondback terrapin, spotted turtle, wood turtle</p>	<p><i>Implementation and on-the-ground conservation actions:</i> (1) land acquisition in “focal areas” identified in Conservation Plans, (2) habitat restoration, enhancement, and improved connectivity actions identified in Plans.</p> <p><i>Expertise and technical support:</i> (1) cross-jurisdictional planning and partner coordination capacity.</p>	<p>Northeast Turtles website for Conservation Plans, sampling protocols, and conservation recommendations for Eastern box, spotted, and wood turtles.</p>	<p>Turtles of the Northeast United States (2023). A quick reference information guide for states in the Northeast. For up-to-date information, please consult the state websites.</p>



	<p><i>Science and research: (1) sampling and monitoring in focal core areas and sampling landscapes, (2) reduce threats, (3) research addressing data gaps outlined in the Plans.</i></p>	<p>ECOS page with bog turtle Recovery Plan</p> <p>Diamondback Terrapin Recovery Strategy</p> <p>Locations: Contact state wildlife agency biologists for specific location information</p>	<p>Management Guidelines for Wood Turtles</p> <p>Spotted turtles Regional Conservation Needs Assessment in MD and DE</p>
<p>Saltmarsh sparrow</p>	<p><i>Implementation and on-the-ground conservation actions: (1) Marsh habitat restoration, enhancement, and improved connectivity, (2) permanent protection (e.g., conservation easement, fee simple purchase) of marsh habitat, including key marsh habitat corridors and lands to permit marsh migration.</i></p> <p><i>Expertise and technical support: (1)cross-jurisdictional species and habitat management planning and coordination capacity, (2) partner and community engagement, communication, and involvement.</i></p> <p><i>Science and research: (1) rapid assessments and surveys and monitoring in focal core areas and landscapes, (2) research addressing species and habitat data gaps outlined in the Plans.</i></p>	<p>See decision-support and mapper tool links</p>	<p>Atlantic Coast Joint Venture (ACJV)</p> <p>Saltmarsh Sparrow restoration priority mapper an interactive mapping tool to identify priority salt marshes within each state that are good candidates for restoration, enhancement, and/or management to provide high-quality saltmarsh sparrow nesting habitat.</p> <p>ACJV coastal restoration project inventory a data dashboard to explore current and past coastal projects to conserve or restore habitat for saltmarsh sparrow, black rail, and black duck</p>



Appendix B

Full Proposal Project Narrative Template

Chesapeake WILD Implementation

Instructions: Save this document on your computer and complete the narrative in the format provided. The final narrative may not exceed six (6) pages, excluding tables and figures. Please retain the outline format below and adhere to section-by-section word limits, but you may delete the instructions associated with each element. Once complete, upload this document into the on-line application as instructed.

- A. Goals and Objectives:** What are the overall goals and objectives for the project and how do they advance the **PROGRAM PILLARS** outlined in accompanying Request for Proposals? What general activities or approaches are you proposing to implement to achieve those goals and objectives?
- B. Outcomes:** Which specific **PROGRAM PILLARS** will be addressed by the project? What three to five (3-5) associated outcomes are anticipated as a result of proposed activities? Outcomes may be quantitative or qualitative and should be as specific as possible to the proposed project.
- C. Project Location:** Where is the proposed project located, including its connection with or position in the broader relevant landscape(s) (e.g. watershed or drainage area, existing habitats and/or conserved lands)? Why or how was this location selected, considering relation to and position within the broader relevant landscape(s), associated opportunities to further established **PROGRAM PILLARS**, past or going efforts in the area, and use of existing tools and resources for geographically targeting associated conservation and/or restoration actions?
- D. Current Conservation Context:** What efforts are already underway or have been completed in the project area by your organization, project partners, or others to advance the relevant **PROGRAM PILLARS**? How do the proposed activities build on or enhance any of those completed or ongoing efforts, including but not limited to prior NFWF funding?
- E. Current Partnership Context:** Who are the partners (e.g., organizations, government agencies, business, individuals) currently engaged in efforts to advance relevant **PROGRAM PILLARS** and associated actions in the project area and the broader relevant landscape and what are their general roles and responsibilities? What new partners do you intend to engage in proposed project activities? How do you intend to leverage, enhance, or expand the roles of these partners in advancing proposed project activities?
- F. Communities Engaged and Impacted:** Describe the community(ies) where the project will take place and any associated target audience(s), who will specifically benefit from the project, and how they were or will be engaged in project development and implementation. Using the table below, provide information on key demographic and socioeconomic indicators for the community(ies) and target audience(s). Use your narrative response to provide any other representative demographic or socioeconomic data or information.



Community(ies) and/or Target Audience(s)	Race/Ethnicity (%)	Poverty Rate (%)	Low Income (%)	Annualized Unemployment Rate (%)

G. Work Plan: What are the major tasks or activities you plan to execute through the proposed project, who is responsible for each task/activity, and when do you plan to complete each major task/activity? Please use the general template below and add rows as needed.

Activity Description	Associated Deliverables	Responsible Parties	Completion Date (Month and Year)

H. Data Collection Activities: What types of data do you intend to collect as part of the proposed project activities (i.e., through grant award funding and/or matching sources) and what methods are you planning to use to collect those data? How do you plan to use those data and what associated products or outputs will be generated from proposed data collection efforts?

I. Tracking and Sustaining Implementation Progress: What plans are proposed or are already in place to support long-term stewardship, maintenance, and delivery of intended environmental or natural resource benefits from the project?



Full Proposal Project Narrative Template
Chesapeake WILD-PTA

Instructions: Save this document on your computer and complete the narrative in the format provided. The final narrative may not exceed six (6) pages, excluding tables and figures. Please retain the outline format below and adhere to section-by-section word limits, but you may delete the instructions associated with each element. Once complete, upload this document into the on-line application as instructed.

- A. Goals and Objectives:** What are the overall goals and objectives for the project and how do they advance the **PROGRAM PILLARS** outlined in accompanying Request for Proposals? What general activities or approaches are you proposing to implement to achieve those goals and objectives?
- B. Outcomes:** Which specific **PROGRAM PILLARS** will be addressed by the project? What three to five (3-5) associated outcomes are anticipated as a result of proposed activities? Outcomes may be quantitative or qualitative and should be as specific as possible to the proposed project.
- C. Demonstrated Need:** How do the proposed activities address unique gaps in existing capacity, technical expertise, and financial resources among intended beneficiaries of the project (e.g. organizations, communities) in advancing relevant **PROGRAM PILLARS** and associated conservation and/or restoration actions?
- D. Communities Engaged and Impacted:** Describe the community(ies) where the project will take place and any associated target audience(s), who will specifically benefit from the project, and how they were or will be engaged in project development and implementation. Using the table below, provide information on key demographic and socioeconomic indicators for the community(ies) and target audience(s). Use your narrative response to provide any other representative demographic or socioeconomic data or information.

Community(ies) and/or Target Audience(s)	Race/Ethnicity (%)	Poverty Rate (%)	Low Income (%)	Annualized Unemployment Rate (%)

- E. Commitment to Implementation:** How do you intend to translate proposed planning and technical assistance activities and output resulting from the project into future on-the-ground conservation and/or restoration actions in the local community?



NFWF



F. Work Plan: What are the major tasks or activities you plan to execute through the proposed project, who is responsible for each task/activity, and when do you plan to complete each major task/activity? Please use the general template below and add rows as needed.

Activity Description	Associated Deliverables	Responsible Parties	Completion Date (Month and Year)

G. Data Collection Activities: What types of data do you intend to collect as part of the proposed project activities (i.e., through grant award funding and/or matching sources) and what methods are you planning to use to collect those data? How do you plan to use those data and what associated products or outputs will be generated from proposed data collection efforts?

Appendix C

Applicable Proposal Metrics Chesapeake WILD Grants

Fish and Wildlife Habitat Conservation, Management, and Restoration Metrics

Strategy	Activity	Metric	Metric Description/Instructions
Habitat Conservation	Conservation easements	Acres protected under easement	Enter the number of acres protected under long-term easement (permanent or >30-yr). Assuming the specific parcel(s) has been identified, in the NOTES indicate what % of natural land cover would have been cleared in the absence of the easement(s).
Habitat Conservation	Conservation easements	Miles under long-term easement	Enter the number of miles under long-term easement (permanent or >30yr)
Habitat Conservation	Land acquisitions	Acres acquired in fee	Enter # acres acquired in fee. If the parcel has been identified, in the NOTES indicate whether there is a competing offer (Yes/No) or potential zoning change (Yes/No), and what % of natural land cover would be cleared in the absence of the acquisition.
Habitat Management	BMP implementation for stormwater runoff	Acres with BMPs	Enter the number of acres with Best Management Practices (BMPs)
Habitat Management	BMP implementation for stormwater runoff	Volume stormwater prevented	Enter the volume (in gallons) of stormwater prevented from entering water body
Habitat Management	Green Infrastructure	# trees planted	Enter the number of trees planted.
Habitat Restoration	Erosion control	Acres of living shoreline restored	Enter the acres of living shoreline restored
Habitat Restoration	Erosion control	Miles restored	Enter the number of miles restored
Habitat Restoration	Fish passage improvements	# of barriers assessed and/or with design plans	Enter the # of in-stream barriers with assessments or engineering and design plans completed through this grant. In the notes, provide the barrier's SARP ID (aquaticbarriers.org). If the barrier(s) is not in SARP, provide its lat/long or its name and source.
Habitat Restoration	Fish passage improvements	# passage barriers rectified	Enter the # of in-stream barriers removed/rectified in THIS grant. In the notes, provide the barrier's SARP ID-- see SARP Natl. Aq. Barrier Inventory (aquaticbarriers.org). If the barrier(s) is not in SARP, provide its lat/long or its name and source.
Habitat Restoration	Fish passage improvements	Acres of lake habitat opened	Enter the number of acres of lake/pond habitat opened
Habitat Restoration	Fish passage improvements	Miles of stream opened	Enter total # of miles of stream opened as a result of this project. Only include the miles of main stem & smaller tributaries connected until the next barrier upstream (or headwaters), but NOT lakes, ponds, or distance downstream from the barrier removed. Consider utilizing the Chesapeake Bay Program's Fish Passage Prioritization Tool to assess potential outcomes.



Strategy	Activity	Metric	Metric Description/Instructions
Habitat Restoration	Fish passage improvements	Miles of suitable brook trout habitat opened or restored	Indicate the number of stream miles made newly accessible to brook trout via aquatic connectivity work, such as barrier removals, and/or the number of stream miles restored via instream and/or riparian restoration to support viable brook trout populations
Habitat Restoration	Floodplain restoration	Acres restored	Enter # of floodplain acres restored. In the NOTES, indicate % of vegetation on the pre-project site (0-20%, 21-40%, 41-60%, 61-80%, 81-100%) and the dominant vegetation being restored (Broadleaf, Conifer, Redwood, Shrub, Grass, Marsh, Wet meadow, Swamp).
Habitat Restoration	Instream restoration	# structures installed	Enter the number of habitat structures installed, replaced, upgraded or repaired for improvement of instream habitat
Habitat Restoration	Instream restoration	Miles restored	Enter the number of instream miles restored
Habitat Restoration	Land restoration	Acres of trees planted	Enter # acres of TREES planted. In the NOTES, specify landcover type prior to planting (barren, cropland, grassland, shrubland), average # of trees per acre planted, and forest type (broadleaf, conifer, redwood, swamp--either broadleaf or conifer, shrub).
Habitat Restoration	Land restoration	Acres restored on tribal lands	Enter the number of acres restored on tribal lands
Habitat Restoration	Land restoration	Sites restored	Enter the number of sites that were restored
Habitat Restoration	Land, wetland restoration	# of trees planted	Enter # trees planted. In the NOTES, specify landcover type prior to planting (barren, cropland, grass, shrub), # of acres, forest type planted (broadleaf, conifer, redwood, swamp--either broadleaf or conifer, shrub), density per acre, and mortality rate.
Habitat Restoration	Land, wetland restoration	Acres restored	Enter the number of acres of habitat restored. In the NOTES, specify landcover prior to restoration (barren, cropland, grass, shrub) and post-restoration (broadleaf, grassland, shrubland, marsh, wet meadow, tidal marsh, swamp,).
Habitat Restoration	Marine or Submerged Aquatic Vegetation (SAV) habitat restoration	Acres restored	Enter the number of marine or Submerged Aquatic Vegetation (SAV) habitat acres restored
Habitat Restoration	Removal of invasives	Miles restored	Enter the number of miles restored
Habitat Restoration	Riparian restoration	Acres restored	Enter the number of riparian acres restored, including riparian buffers. In the NOTES section, specify the landcover type prior to planting (barren, cropland, grassland), the dominant vegetation being planted (Broadleaf, Conifer, Shrub, Grass, Marsh, Wet meadow, Swamp), and the average width of the riparian buffer.
Habitat Restoration	Riparian restoration	Miles restored	Enter the number of miles restored
Habitat Restoration	Stream restoration	Miles restored	Enter the total miles of stream restored through erosion control, streambank stabilization, riparian buffers, livestock exclusion, and/or stream channel modification. Do not duplicate stream miles that have more than one restoration activity.
Habitat Restoration	Tidal marsh restoration	Acres restored	Enter the acres of tidal marsh restored.
Habitat Restoration	Wetland restoration	Acres restored	Enter # acres of non-tidal freshwater WETLAND (not riparian or instream) habitat restored. In the NOTES, specify landcover before restoration (Marsh, Wet meadow, Swamp) and % of vegetation on pre-project site (0-20%, 21-40%, 41-60%, 61-80%, 81-100%).



Capacity, Outreach, and Engagement

Strategy	Activity	Metric	Metric Description/Instructions
Capacity, Outreach, Incentives	Building institutional capacity	# FTE with sufficient training	Enter the number of staff or full-time equivalents with sufficient training and skills engaged in conservation activities
Capacity, Outreach, Incentives	Building institutional capacity	# of orgs contributing to goals	Enter the number of organizations contributing to the initiative's conservation goals
Capacity, Outreach, Incentives	Economic benefits	# jobs sustained	Enter the # of paid jobs that are partially or fully sustained through this grant. Jobs should have existed prior to the grant, be funded by the grant, and be directly engaged in project activities. The starting value for this metric should be zero.
Capacity, Outreach, Incentives	Outreach/ Education/ Technical Assistance	# of edu signs installed	Enter the number of educational or interpretive signs installed by project
Capacity, Outreach, Incentives	Outreach/ Education/ Technical Assistance	# of public education events	Enter the number of public education events completed
Capacity, Outreach, Incentives	Outreach/ Education/ Technical Assistance	# people reached	Enter the number of people reached by outreach, training, or technical assistance activities
Capacity, Outreach, Incentives	Public Access	# acres with public access	Enter the number of acres now open to public access as a result of the acquisition/easement.
Capacity, Outreach, Incentives	Public Access	# miles with public access	Enter the number of miles of stream or river opened to public access as a result of the acquisition/easement.

Planning & Technical Assistance, Research, and Monitoring

Strategy	Activity	Metric	Metric Description/Instructions
Planning, Research, Monitoring	Management or Governance Planning	# plans developed	Enter the number of plans developed that had input from multiple stakeholders
Planning, Research, Monitoring	Monitoring	# sites being monitored	Enter the # sites being monitored
Planning, Research, Monitoring	Monitoring	Acres being monitored	Enter the number of acres being monitored
Planning, Research, Monitoring	Monitoring	Miles being monitored	Enter the number of miles being monitored
Planning, Research, Monitoring	Research	Miles assessed	Enter the number of stream miles assessed.
Planning, Research, Monitoring	Restoration planning/design/permitting	Acres restored	Enter the number of acres for which planning, design, or permitting activities are being conducted under this project.
Planning, Research, Monitoring	Restoration planning/design/permitting	Miles restored	Enter the number of miles for which planning, design, or permitting activities are being conducted under this project.



NFWF

