

DELAWARE RIVER PROGRAM 2026 METRICS GUIDANCE



NFWF

TABLE OF CONTENTS

Introduction to NFWF's Delaware River Program

Delaware Watershed Conservation Fund

Program Staff

General Metrics Information

Metrics Overview

Common Mistakes

List of Available Metrics

Delaware Watershed Conservation Fund

Metrics Descriptions and Tips

Habitat Restoration

Habitat Management

Habitat Conservation

Capacity, Outreach, Incentives

Planning, Research, Monitoring

Metrics Resources

FieldDoc



INTRODUCTION TO NFWF'S DELAWARE RIVER PROGRAM

DELAWARE WATERSHED CONSERVATION FUND

The Delaware Watershed Conservation Fund (DWCF) addresses near-term and long-range issues identified by the Delaware River Basin Restoration Partnership and Program [Framework](#), for measurable gains for fish and wildlife conservation, clean water, access to outdoor recreation, and other values and natural and economic benefits for people living in the basin. Major funding for the DWCF is provided by the U.S. Fish and Wildlife Service. The fund was launched in 2018 as a first step toward delivering the Delaware River Basin Conservation Act, bringing together various stakeholders invested in restoration and conservation efforts throughout the Delaware River Watershed to address different strategic program areas and cross-program activities, build networks, and improve efficiency and focus on a basin-wide scale. DWCF projects are implemented entirely within the Delaware River watershed. The fund's investments target areas of regional significance for restoration and conservation in order to support ongoing efforts, increase capacity, and facilitate maximum adaptive potential in changing watershed conditions.

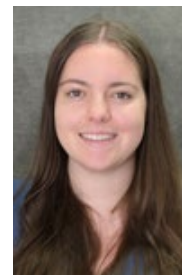
PROGRAM STAFF



Erin Lewis
Program Director, Delaware River
erin.lewis@nfwf.org | 202-857-0166



Evie Kraner
Manager, Delaware River
evie.kraner@nfwf.org | 202-595-2651



Ragan Smith
Coordinator, Regional (Northeast)
ragan.smith@nfwf.org | 202-938-0625

GENERAL METRICS INFORMATION

METRICS OVERVIEW

To assess project progress and ensure greater consistency of data provided by multiple grants, the Delaware Watershed Conservation Fund provides a list of metrics in Easygrants. In addition to metrics in Easygrants, grantees can gather more detailed site and practice-level data via FieldDoc.org (see tip sheet for additional details).

The metrics section of the Full Proposal allows you to select the activity and outcome metrics you will use to measure your project's progress and success. Follow the directions provided in Easygrants to complete this section. A couple of general pointers:

- Hover your mouse cursor over the “?” next to a metric to read its description and specific guidance.
- Please “Add” and complete at least one metric relevant to reporting your project's progress.
- For each metric you will need to provide values for “Starting Value” and “Target Value.” **In most cases the starting value will be zero (0). Please reach out to NFWF staff if you are including metrics with non-zero starting values.**
- In your project narrative, you will have the opportunity to describe additional activities and outcomes associated with your project.
- Please only select metrics associated with the project elements for which you are requesting funding in this grant.
- Click the small notepad icon to the right of a selected metric to add notes. Adding notes to metrics assists reviewers in understanding how values were determined. **Metric notes are required for all metrics.**

To increase consistency in the usage and calculations of metrics, the NFWF Delaware team has created this “2026 Metrics Guidance” document to provide additional details and instructions about each metric. Please ensure that, upon choosing a metric to include in your proposal, the calculation of the target value accounts for the details listed for the metric in this guide.

COMMON MISTAKES

1. **Double Counting.** One practice/implementation technique should not be counted under two different metrics (with the same measurement, eg. acres). For example, if implementing a wetland restoration and selecting “Wetland restoration - Acres restored,” do not also select “BMP implementation for nutrient or sediment reduction - Acres with BMPs” for the same spatial area. Complementary metrics (with different measurements, eg. miles opened and # barriers or acres and complementary miles of riparian restoration) can be selected for one practices/implementation technique.
2. **Not Including Metric Notes.** Metrics notes are an opportunity to expand on and explain calculations, practice details, and target values. If notes are necessary to understanding a practice, the instructions will specify what should be included, at a minimum, in the notes. **Insufficient metric notes will be sent back for revisions.**
3. **Counting Planning as Implementation.** If the project includes planning, research, engineering/design, or technical assistance, the *future* implementation resulting from that work should not be counted under any habitat management or habitat restoration metrics. Please use the “Planning, Research, Monitoring” metrics.
4. **Target Value Lower Than Starting Value.** If the starting value is not zero, the target value should be the value to be achieved by the NFWF project within the period of performance *plus* the starting value. The only instance when the starting value will not be zero is when you are applying for a second or third phase of a project previously funded by NFWF.
5. **Using “People with Changed Behavior” Instead of “People Reached” Metric.** Changed behavior must be a MEASURABLE behavior with a baseline value upon which grant outcomes can be compared. Social media campaigns, signage, etc. (passive engagement) should not be counted under behavior change, but rather should be counted under ‘DRRF - Outreach/ Technical Assistance - # people targeted through email and newsletters’, or ‘DRRF - Outreach/ Technical Assistance - # people reached’ depending on the activity .

LIST OF AVAILABLE METRICS – DELAWARE WATERSHED CONSERVATION FUND

Metrics available to pick in Easygrants. Additional details and instructions for each metric are included in the next section. Note that while metrics are labeled for the DRRF they are available and selectable for DWCF applicants.

HABITAT RESTORATION

- DRRF - Beach habitat quality improvements - Miles restored
- DRRF - Beach habitat quality improvements - Acres restored
- DRRF - Erosion control - Acres restored
- DRRF - Fish passage improvements - # of barriers assessed and/or with design plans
- DRRF - Fish passage improvements - # passage barriers rectified
- DRRF - Fish passage improvements - Miles of stream opened
- DRRF - Floodplain restoration - Acres restored
- DRRF - Instream restoration - Miles restored
- DRRF - Land, wetland restoration - # of trees planted
- DRRF - Living shorelines - Linear feet restored
- DRRF - Riparian restoration - Acres restored
- DRRF - Riparian restoration - Miles restored
- DRRF - Tidal marsh restoration - Acres restored
- DRRF - Wetland restoration - Acres restored

HABITAT MANAGEMENT

- DRRF - BMP implementation - Miles of stream with reduced and/or protected water temperature
- DRRF - BMP implementation for fencing improvements - Miles of fencing improved or installed
- DRRF - BMP implementation for nutrient or sediment reduction - Acres with BMPs
- DRRF - BMP implementation for nutrient or sediment reduction - Acres with conservation tillage
- DRRF - BMP implementation for nutrient or sediment reduction - Acres with cover crops
- DRRF - BMP implementation for nutrient or sediment reduction - Acres with enhanced nutrient mgt
- DRRF - BMP implementation for nutrient or sediment reduction - Lbs N avoided (annually)
- DRRF - BMP implementation for nutrient or sediment reduction - Lbs P avoided (annually)
- DRRF - BMP implementation for nutrient or sediment reduction - Lbs sediment avoided (annually)
- DRRF - BMP implementation for stormwater runoff - Acres with BMPs
- DRRF - BMP implementation for stormwater runoff - Volume stormwater prevented
- DRRF - BMP implementation to mitigate recreational disturbance - Miles with BMPs
- DRRF - Early successional forest - Improved management practices - Acres under improved management
- DRRF - Nature-based Infrastructure - access pts developed/improved
- DRRF - Nature-based Infrastructure - miles trails developed/improved
- DRRF - Improved management practices - Acres managed to treat annual invasive plants
- DRRF - Improved management practices - Acres under improved management
- DRRF - Improved management practices - Acres with managed grazing
- DRRF - Late successional forest - Improved management practices - Acres under improved management
- DRRF - Mature forest - Improved management practices - Acres under improved management

HABITAT CONSERVATION

- DRRF - Conservation easements - Acres protected under easement
- DRRF - Land acquisitions - Acres acquired in fee

CAPACITY, OUTREACH, INCENTIVES

- DRRF - Economic benefits - # jobs created
- DRRF - Economic benefits - # job sustained
- DRRF - Outreach/ Technical Assistance - # internships/fellowships
- DRRF - Outreach/ Technical Assistance - # people reached
- DRRF - Outreach/ Technical Assistance - # people with changed behavior
- DRRF - Outreach/ Technical Assistance - # of public events
- DRRF - Outreach/ Technical Assistance - # people targeted through email and newsletters
- DRRF - Outreach/ Technical Assistance - # social media posts
- DRRF - Public Access - # acres with public access
- DRRF - Public Access - # miles with public access
- DRRF - Volunteer participation - # volunteers participating

PLANNING, RESEARCH, MONITORING

- DRRF - Forest Management Planning - # of acres covered by dynamic forest plans
- DRRF - Monitoring - Acres being monitored
- DRRF - Monitoring - Miles being monitored
- DRRF - Monitoring - # monitoring programs
- DRRF - Monitoring - # sites being monitored
- DRRF - Project Management - Acres with transaction costs and project mgmt activities addressed
- DRRF - Research - Miles assessed
- DRRF - Restoration planning/design/permitting - Acres restored
- DRRF - Tool development for decision-making - # tools used by decision-makers

METRICS DESCRIPTION AND TIPS

HABITAT RESTORATION				
PRACTICE	METRIC	INSTRUCTIONS	IMPLEMENTATION EXAMPLES	ADDITIONAL TIPS
Beach habitat quality improvements	Miles restored	Enter the number of miles of restored or protected beach/shoreline habitat; do not double count with erosion acres restored. In the NOTES, indicate whether vegetation is being planted. If selecting this metric, please select BOTH beach acres restored and beach miles restored.	Dune restoration, beach plantings, beach protection practices	Projects selecting beach and dune restoration as their metric should select BOTH beach habitat acres and miles restored.
Beach habitat quality improvements	Acres restored	Enter the number of acres of restored or protected beach/shoreline habitat; do not double count with erosion acres restored. In the NOTES, indicate whether vegetation is being planted. If selecting this metric, please select BOTH beach acres restored and beach miles restored.	Dune restoration, beach plantings, beach protection practices	Projects selecting beach and dune restoration as their metric should select BOTH beach habitat acres and miles restored.
Erosion control	Acres restored	Enter the number of acres restored; enter specific type of coastal/shoreline habitat and restoration in NOTES section.	Living shoreline, natural revetments/breakwater systems	Buffers should be “Riparian Restoration;” bank stabilization should be “Instream Restoration” – do not double count
Fish passage improvements	# of barriers assessed and/or with design plans	Enter the # of in-stream barriers with assessments or engineering/design plans completed in this grant. In the notes, provide the barrier's SARP ID (aquaticbarriers.org). If the barrier(s) is not in SARP, provide its lat/long or its name and source.		
Fish passage improvements	# barriers rectified	Enter the # of in-stream barriers removed/rectified through dam removals, culvert replacements, or other fish passage improvements in THIS grant. In the notes, provide the species benefitting and the barrier's SARP ID--see SARP Natl. Aq. Barrier Inventory (aquaticbarriers.org). If the barrier(s) is not in SARP, provide its lat/long or its name and source.	Dam removal, culvert replacement	Only include grant funded implementation. Do not include results of future removals or replacements due to grant-funded design or planning activities
Fish passage improvements	Miles of stream opened	Enter total # of miles opened to improve aquatic organism passage. Only include the miles of main stem & smaller tributaries connected until the next barrier upstream (or headwaters), but NOT lakes, ponds, or distance downstream from the barrier removed. If improving or increasing eastern brook trout patch sizes, specify in NOTES section.	Dam removal, culvert replacement, fish passage enhancements	Only include grant funded implementation. Do not include results of future removals or replacements due to grant-funded design or planning activities

HABITAT RESTORATION CONTINUED

PRACTICE	METRIC	INSTRUCTIONS	IMPLEMENTATION EXAMPLES	ADDITIONAL TIPS
Floodplain restoration	Acres restored	Enter the number of floodplain acres restored. In the NOTES, indicate the % of vegetation on the pre-project site (0-20%, 21-40%, 41-60%, 61-80%, 81-100%) and the dominant vegetation being restored (Broadleaf, Conifer, Shrub, Grass, Marsh, Swamp).	Re-establishment of function of floodplains natural conditions (leveling degraded streambanks, planting native species)	Must be active restoration/ reconnection (not just land taken out of production); note if restoration enhances stream resilience
Instream restoration	Miles restored	Enter the number of miles restored; briefly indicate the type of restoration in the NOTES section.	Channel modification, bank stabilization, bed stabilizations, stream diversions, habitat enhancements like woody debris and other hydrological improvements	Do not double count with "Riparian Restoration," note if restoration enhances stream resilience
Land, wetland restoration	# trees planted	Enter the number of trees planted and sustained (tree plantings that are urban/green infrastructure can also be included). In the NOTES section, specify the landcover type prior to planting (barren, cropland, grassland, shrubland), # of acres, forest type planted (broadleaf, conifer, redwood, swamp--either broadleaf or conifer), density per acre, and mortality rate. Do not include any additional trees planted to replace mortality in the numerical metric value.	Urban forestry, buffer plantings, habitat restoration	
Living shorelines	Linear feet restored	Enter the # of linear feet of living shorelines restored.		
Riparian restoration	Acres restored	Enter the number of riparian acres restored, including riparian buffers. In the NOTES section, specify the landcover type prior to planting (barren, cropland, grassland), the dominant vegetation being planted (Broadleaf, Conifer, Shrub, Grass, Marsh, Wet meadow, Swamp), and the average width of the riparian buffer. DO NOT include instream restoration miles in this measurement. If selecting this metric, please select BOTH riparian acres restored and riparian miles restored. Only choose this metric if the project is in a NFWF Business Plan identified focal area or patch. Please include the patch ID.	Forested buffers, vegetated buffers, grass buffers	Projects selecting riparian restoration as their metric should select BOTH riparian acres and riparian miles restored

HABITAT RESTORATION CONTINUED

PRACTICE	METRIC	INSTRUCTIONS	IMPLEMENTATION EXAMPLES	ADDITIONAL TIPS
Riparian restoration	Miles restored	Enter the number of riparian miles restored, including riparian buffers. In the NOTES section, specify the landcover type prior to planting (barren, cropland, grassland), the dominant vegetation being planted (Broadleaf, Conifer, Shrub, Grass, Marsh, Wet meadow, Swamp), and the average width of the riparian buffer. DO NOT include instream restoration miles in this measurement. If selecting this metric, please select BOTH riparian miles restored and riparian acres restored.	Forested buffers, vegetated buffers, grass buffers	Buffers are typically 35-100ft in width, please note the average width in your metric note. Projects selecting riparian restoration as their metric should select BOTH riparian acres and riparian miles restored if the project falls within NFWF Eastern Brook Trout Focal Areas. Applicants can check using this mapping tool .
Tidal marsh restoration	Acres restored	Enter # acres of salt marsh habitat restored. Do not double count with acres of wetland restored.	Elevation enhancements through thin layer deposition, ditch remediation, runneling	
Wetland restoration	Acres restored	Enter # acres of WETLAND (not riparian or instream) habitat restored. In the NOTES, specify landcover prior to restoration (Marsh, Tidal marsh, Wet meadow, Swamp) and indicate % of vegetation on pre-project site (0-20%, 21-40%, 41-60%, 61-80%, 81-100%).	Re-establishment (rebuilding former wetland) or rehabilitation (repairing degraded wetland)	

Note: Projects with a strong resilience component may be asked by NFWF to provide additional metrics. Major resilience activities may include marsh restoration, beach, and dune restoration, living shorelines, or floodplain restoration.

HABITAT MANAGEMENT

PRACTICE	METRIC	INSTRUCTIONS	IMPLEMENTATION EXAMPLES	ADDITIONAL TIPS
BMP implementation	Miles of stream with reduced and/or protected water temperature	Enter the number of stream miles with BMPS to reduce and/or protect water temperature. Use the NOTES section to describe the actual degree decrease (or maintenance) of temperature.	Tree planting or riparian buffers that reduce stream temperature	Can be counted with riparian acres and miles of riparian restoration for streamside forest buffer
BMP implementation for fencing improvements	Miles of livestock fencing improved or installed	Enter miles of livestock fencing and indicate type of improvements or if the fencing is new construction in the NOTES section.	Improving existing fence AND/OR construction of <i>new</i> fence to keep livestock out of stream	Can be counted with miles of riparian restoration for streamside forest buffer with exclusion fencing
BMP implementation for nutrient or sediment reduction	Acres with BMPs	Enter number of acres; indicate the type of BMP(s) (e.g. manure storage, barnyard practices) and indicate method of calculating reduction in NOTES section. Please see the DWCF toolbox on the website for calculation resources. DO NOT include cover crops, conservation tillage, enhanced cropland nutrient management, or managed grazing.	Barnyard runoff controls, roof runoff management, manure storage	Do not double count with “BMP implementation for stormwater runoff – Acres with BMPs.”
BMP implementation for nutrient or sediment reduction	Acres with cover crops	Enter the number of cropland acres with cover crops practices. Please describe the cover crop practices in the NOTES section.	Cover crops	
BMP implementation for nutrient or sediment reduction	Acres with conservation tillage	Enter the number of cropland acres with conservation tillage practices. Please describe conservation tillage practices in the NOTES section.	No-till	
BMP implementation for nutrient or sediment reduction	Acres with enhanced nutrient management	Enter the number of cropland acres with enhanced nutrient management practices other than or in addition to conservation tillage or cover crops. Please describe the nutrient management practices in the NOTES section.	Nutrient management	
BMP implementation for nutrient or sediment reduction	Acres with managed grazing	Enter the number of acres with managed grazing (i.e., promoting plant growth above and below ground, improving wildlife habitat, and maximizing soil carbon through a variety of grazing approaches). Please describe the grazing practices in the NOTES section.	Prescribed grazing	

HABITAT MANAGEMENT CONTINUED

PRACTICE	METRIC	INSTRUCTIONS	IMPLEMENTATION EXAMPLES	ADDITIONAL TIPS
BMP implementation for nutrient or sediment reduction	Lbs N avoided (annually)	Enter the amount of nitrogen prevented from entering system annually. In the notes, indicate the model or method used to calculate this metric.	N, P and S reduced by implementation of BMPs (agriculture or stormwater)	Values can be calculated using the FieldDoc.org platform. Please include which calculator was used in the notes section of the metric.
BMP implementation for nutrient or sediment reduction	Lbs P avoided (annually)	Enter the amount of phosphorous prevented from entering system annually. In the notes, indicate the model or method used to calculate this metric.		
BMP implementation for nutrient or sediment reduction	Lbs sediment avoided (annually)	Enter the amount of sediment prevented from entering system annually. In the notes, indicate the model or method used to calculate this metric.		
BMP implementation for stormwater runoff	Acres with BMPs	Enter number of acres treated with stormwater BMP(s); indicate the type of BMP(s) (e.g., rain gardens, constructed wetlands, green roofs, rain barrels, etc.) and inches of rainfall that will be stored, infiltrated and/or filtered within a 48-hour rain event in NOTES section. Include method of calculation; please see the DWCF toolbox on the website for calculation resources.	Bioretention, green roofs, permeable pavement, bioswales, rain gardens, etc.	Do not double count with “BMP implementation for nutrient or sediment reduction – Acres with BMPs” as that is primarily for acres treated with agriculture BMPs Make sure that the acreage is the total TREATED acres (the practice drainage area), not just the practice footprint.
BMP implementation for stormwater runoff	Volume stormwater prevented	Enter the volume (in gallons) of stormwater prevented from entering the system per year; indicate type of BMP(s) in the NOTES section; include method of calculation. Please see the DWCF toolbox on the website for calculation resources.	Bioretention, green roofs, permeable pavement, bioswales, rain gardens, etc.	Value is annual, value can be calculated using the FieldDoc.org platform. This metric is measured in GALLONS .

HABITAT MANAGEMENT CONTINUED

PRACTICE	METRIC	INSTRUCTIONS	IMPLEMENTATION EXAMPLES	ADDITIONAL TIPS
BMP implementation to mitigate recreational disturbance	Miles with BMPs	Enter the number of miles where community-based social marketing or other disturbance reduction BMPs are implemented.	Increase stewardship protection programs, beach closures, beach fencing or signage	Can be complementary to capacity/outreach/incentives metrics such as volunteers participating
Early successional forest - Improved mgmt. practices	Acres under improved management	Enter the number of acres under improved management; please only include acres on which active management will occur. You may use the NOTES section to indicate full parcel size benefitting from acres under management.	Comprehensive forest management plans, active forest restoration, edge improvement, canopy openings, invasives management, etc. for habitat improvement	
Late successional forest - Improved mgmt. practices	Acres under improved management	Enter the number of acres under improved management; please only include acres on which active management will occur. You may use the NOTES section to indicate full parcel size benefitting from acres under management.		
Mature successional forest - Improved mgmt. practices	Acres under improved management	Enter the number of acres under improved management; please only include acres on which active management will occur. You may use the NOTES section to indicate full parcel size benefitting from acres under management.		
Nature-based Infrastructure	Access pts developed/improved	Enter the number of public access points developed/improved. In the NOTES section enter the specific practices implemented.		
Nature-based Infrastructure	Miles trails developed/improved	Enter the number of miles of trails developed or improved. In the NOTES section enter the specific practices implemented.		Please indicate in the metric notes section if trails are being developed or improved.
Improved management practices	Acres managed to treat annual invasive plants	Enter the number of acres managed to treat annual invasive plants. In the NOTES section enter the specific practices implemented.		
Improved management practices	Acres under improved management	Enter the number of acres under improved management, enter type of land (i.e. public or private), and enter specific practice(s) in NOTES section; DO NOT double count with acres of BMPs and please reference the 2026 Metrics Guidance for more specific metric options for working lands projects (e.g. agriculture such as salt marsh hay farming and forestry).	Management plans completed (including ag Comprehensive Nutrient Management Plans), invasive management, water control structure management, pollinator habitat management	Please also denote the type of habitat that is being managed (ag, wetland, forest, etc.); do not double count with successional forest practices or ag/stormwater BMPs

HABITAT CONSERVATION

PRACTICE	METRIC	INSTRUCTIONS	IMPLEMENTATION EXAMPLES	ADDITIONAL TIPS
Conservation easements	Acres protected under long-term easement	Enter the number of acres protected under long-term easement (permanent or >30-yr). Assuming the specific parcel(s) has been identified, in the NOTES indicate what % of natural land cover would have been cleared in the absence of the easement(s).		
Land acquisitions	Acres acquired in fee	Enter the number of acres acquired in fee. Assuming the specific parcel(s) has been identified, in the NOTES indicate whether there was a competing offer (Yes/No) or potential zoning change (Yes/No), and what % of natural land cover would be cleared in the absence of the acquisition(s).		

CAPACITY, OUTREACH, INCENTIVES

PRACTICE	METRIC	INSTRUCTIONS	IMPLEMENTATION EXAMPLES	ADDITIONAL TIPS
Economic benefits	# jobs created	Enter the number of new full-time jobs created; indicate workforce targeted in NOTES section (e.g. youth, veterans, etc.). Do not include hired contractor positions as new jobs created, part-time/seasonal jobs, or interns/fellows.	Construction, forestry, technical assistance, landscaping, recreation, etc. jobs created by restoration work	This metric should only include FTE's being created through this funding. This metric should NOT include part-time or contractor positions.
Economic benefits	# jobs sustained	Enter the # of paid jobs that are partially or fully sustained through this grant. Jobs should have existed prior to the grant, be funded by the grant, and be directly engaged in project activities. The starting value for this metric should be zero.		
Outreach/ Technical Assistance	# internships/fellowships	Enter the number of people employed as interns or fellows. This may include paid and unpaid internships/fellowships.	Interns or fellows conducting research or working on project activities	This metric may include paid or unpaid positions.
Outreach/ Technical Assistance	# of public events	Enter the number of public events completed. In the NOTES section please describe the audience targeted by each public event (farmers, community members, municipalities).		

CAPACITY, OUTREACH, INCENTIVES

PRACTICE	METRIC	INSTRUCTIONS	IMPLEMENTATION EXAMPLES	ADDITIONAL TIPS
Outreach/ Technical Assistance	# people reached	Enter the number of people who responded to an offer and inquiry delivered by outreach, training, or technical assistance activities; specify the percentage of individuals reached; indicate type of audience (farmers, community members, municipalities) and how individuals are reached in the NOTES section.	People attending workshops/speaker series, people attending nature walks, people present at site visits	Who is being reached? How are they being reached? Please do not include targeting through social media unless you intend to track engagement.
Outreach/ Technical Assistance	# people with changed behavior	Enter the number of individuals demonstrating a minimum level of behavior change; briefly describe methods of measurement and tracking in NOTES section. Characterize the audience (farmers, community members, municipalities) in the NOTES section.	Measured community-based social marketing campaign, landowner training that results in documented implementation	Do not double count with volunteers or people reached. Changed behavior must be a MEASURABLE behavior with a baseline value upon which grant outcomes can be compared. What is the behavior being changed? How is it measured?
Public Access	# acres with public access	Enter the number of acres now open to public access as a result of the project; include any associated river or stream miles also opened to public access as a result of project through the ‘# miles with public access’ metric.	Rehabilitation or construction of boat access facilities, increase access to protected lands with public benefits, development of a new trail	Should be <i>new</i> public access, not just projects on land that is accessible to the public. Use NOTES section to indicate what kind of access: general public use, trails, etc.; do best to translate stream miles into acres and note the calculation used in NOTES section
Public Access	# miles with public access	Enter the number of miles of stream or river opened to public access as a result of an acquisition/easement or boat/kayak launch. Briefly describe the activities resulting in increased public access in the NOTES section. DO NOT double count with # acres with public access.		This metric can be used for public access points created through a kayak or boat launch – how many river miles are now accessible?
Volunteer participation	# volunteers participating	Enter the number of volunteers participating in project implementation, outreach, and education activities. DO NOT double count with # people reached.	Volunteer tree planting, volunteers monitoring beaches for recreational disturbance	Unpaid volunteer time can be used as in-kind match. Use the NOTES section to describe: Who are the volunteers? What are they doing?

CAPACITY, OUTREACH, INCENTIVES

PRACTICE	METRIC	INSTRUCTIONS	IMPLEMENTATION EXAMPLES	ADDITIONAL TIPS
Outreach/ Technical Assistance	# people targeted through email and newsletters	Enter the total number of people targeted through email and newsletters	Emails and newsletters about project engagement and activities or best conservation practices	Please do not double count with 'people reached'.
Outreach/ Technical Assistance	# social media posts	Enter the number of social media posts. Include in the notes platforms and size of target audience.	Posts on Facebook, Instagram, X, Threads, etc.	Outreach/ Technical Assistance



PLANNING, RESEARCH, MONITORING

PRACTICE	METRIC	INSTRUCTIONS	IMPLEMENTATION EXAMPLES	ADDITIONAL TIPS
Forest Management Planning	# of acres covered by dynamic forest plans	Enter the total acres for each dynamic forest plan (sum if several plans are created during a single planning exercise)		
Monitoring	# monitoring programs	Enter the number of monitoring programs established, underway or improved; briefly describe what is being monitored in the NOTES section.	Stewardship/volunteer monitoring program, academic monitoring of ongoing work	Since the metric includes programs underway, if the project continues monitoring efforts, the starting value should be zero.
Monitoring	# sites being monitored	Enter the number of streams/sites being monitored; briefly describe what is being monitored in NOTES section; include miles/acres/area covered by monitoring.	Integrated water quality monitoring sites, citizen monitoring sites, bird count/survey sites, run count sites	
Monitoring	Acres being monitored	Enter the number of acres being monitored; briefly describe what is being monitored in the NOTES section.		
Monitoring	Miles being monitored	Enter the number of miles being monitored; briefly describe what is being monitored in the NOTES section.		May be used for aquatic monitoring activities
Project Management	Acres with transaction costs and project mgmt activities addressed	Enter the number of acres for which conservation easements and acquisitions will be facilitated; for land protection project management activities, e.g. surveys, appraisal, environmental report.	Land put in easement/acquisition (with match or non-NFWF funding) for which project funds assisted in facilitation (legal fees, surveys, appraisals, reports)	Okay to double count with acres of new access if protected land will also be open to the public (made possible by NFWF funds)
Research	Miles assessed	Enter the number of stream, river, beach or shoreline miles assessed; briefly describe the assessment aim in the NOTES section.	Culvert assessments, stream connectivity assessments, shoreline erosion assessments, prioritization efforts	
Restoration planning/design/permitting	Acres restored	Enter the number of acres for which planning, design, or permitting activities are being conducted under this project.		
Tool development for decision-making	# tools used by decision-makers	Enter the number of tools developed that are used by decision-makers; briefly describe the tool in the NOTES section.	Site prioritization analysis, engagement toolkit	Should be <i>new</i> tools, not existing ones used for the project

METRICS RESOURCES

To assist applicants in generating credible metric estimates, NFWF has partnered with the Chesapeake Commons and the Academy of Natural Sciences to functionalize FieldDoc, a user-friendly tool that allows consistent planning, tracking, and reporting of water quality improvement activities and associated nutrient and sediment load reductions from proposed grant projects.

NFWF encourages all projects proposing to implement on-the-ground water quality improvements to utilize FieldDoc to calculate estimated load reductions included in their application. When setting up proposed projects in FieldDoc, please be sure to list your application's 5-digit Easygrants number in the FieldDoc project title.

For technical support on FieldDoc utilization during the proposal development process, please contact Erin Hofmann with the Chesapeake Commons at hofmann@chesapeakecommons.org. Additional guidance is available at help.fielddoc.org.

2026 Request for Proposals:

Delaware Watershed Conservation Fund: <https://www.nfwf.org/delaware-watershed-conservation-fund-2026-request-proposals>

NFWF Website Resources

[Delaware River Program Page](#)

[Applicant Information](#)

