

**National Fish and Wildlife Foundation  
Project Evaluation Form**

Project Name and Number: Stormwater Control Demonstration (NY) #2005-0191-005

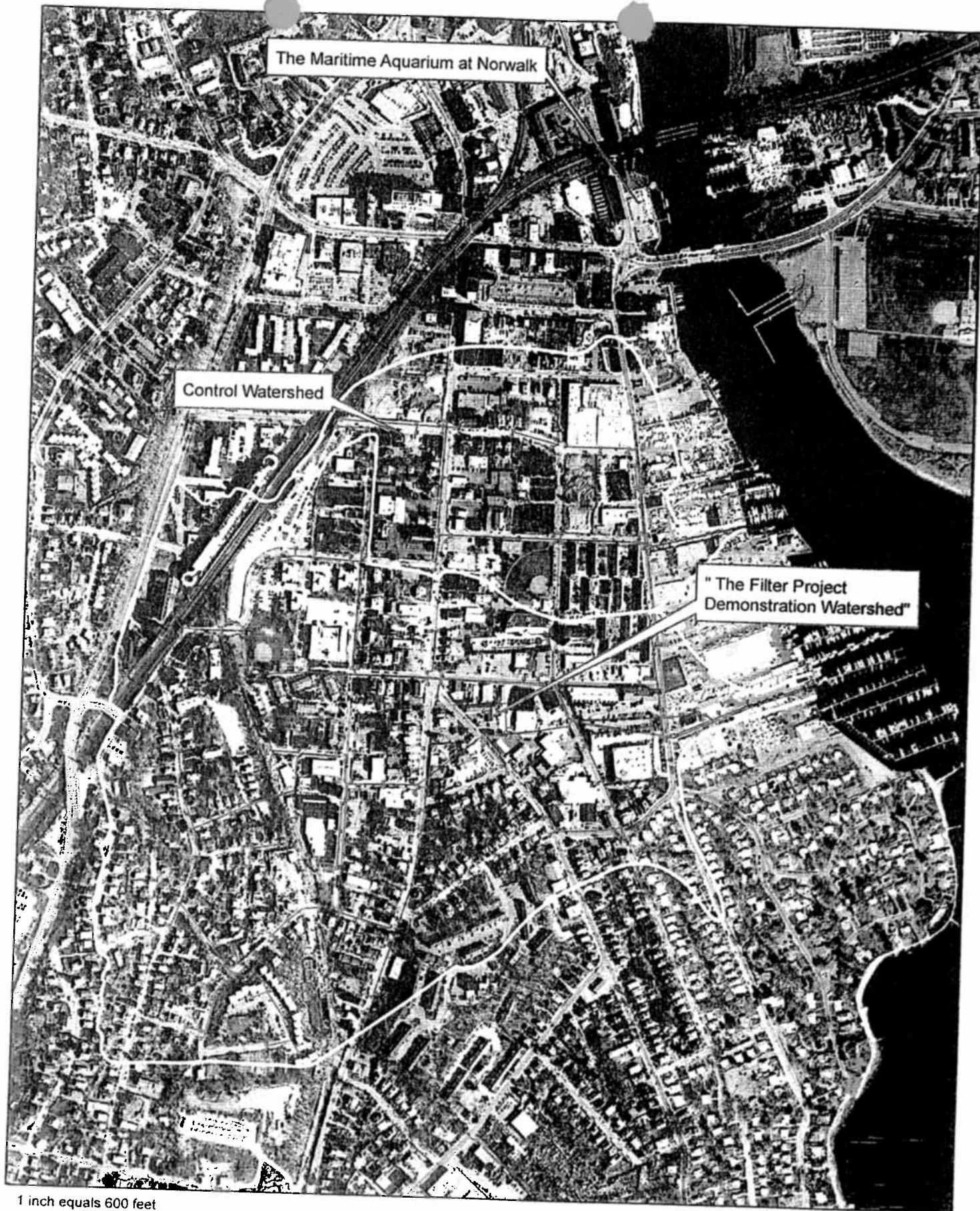
Recipient: City of Norwalk, Connecticut

Project Location: **Veteran's Park, Gregory Blvd.**

- 1) Were the specific objectives as outlined in your application and grant agreement successfully implemented and accomplished? Explain. **Yes- 275 Abtech and 45 Transpo filters were installed in catch basins and are being monitored for performance.**
  
- 1) Please assess project accomplishments as quantitatively as possible. For example:
  - a. Number of miles of stream/river corridor benefited. Categorize by type of benefit (e.g., protected, enhanced, restored, made accessible).
  - b. Total acres of land conserved. Categorize by conservation mechanism (e.g., restored, managed, acquired, placed under an easement) and by habitat type (e.g., wetland, deciduous forest, shortgrass prairie).
  - c. Species benefited. If possible, report number of individuals of each species.
  - d. Number of meetings/events held. + 3
  - e. Presentations made. + 8
  - f. Publications and extent of distribution. **At least 4 national publications**
  - g. Other
  
- 2) Assess the number of people reached through your work (e.g., landowners, students, organizations, agencies) Did other land managers benefit from the project? **50,000 estimated readers of various articles and another 1,000 through public outreach projects**
  
- 3) Were any surveys or interviews conducted with partners to help gauge the success of your efforts?
  
- 4) How will the project be evaluated in terms of monitoring or assessment of cause-and-effect response? Describe the evaluation timescale (e.g., one year, five years, ten years). How will monitoring results be reported? **We intend on continuing monitoring for at least 2 more years.**

- 5) Does this project fit into a larger program, spatially or temporally? If so, how has that program benefited from your work? (For example, an easement or on-the-ground work that connects or benefits other protected properties.) **Yes – This project is an attempt to define a City-wide storm-water plan and intended for distribution state-wide.**
- 6) Does the project incorporate an adaptive management component? If so, please explain. Any lessons learned that will guide future implementation of this, or similar, projects?
- 7) Was there a local/regional/national response? Any media/press involvement? **There has been international interest and visits to the project.**
- 8) To what degree has this project contributed to the conservation community as a whole? **A significant amount of pollution, heavy metals and hydrocarbons were captured prior to entering Long Island Sound.**
- 9) Did your work bring in additional partners, more landowners, et cetera, who would be interested in doing similar work on their land in the future? If so, please describe. **Yes- Communities throughout the state and nations have shown great interest in the project.**
- 10) Do you have any suggestions for NFWF to guide improvement of our project administration?

**Please share any additional information that you feel is important to the evaluation of your program.**



The Maritime Aquarium at Norwalk

Control Watershed

"The Filter Project  
Demonstration Watershed"



1 inch equals 600 feet

# THE NORWALK FILTER PROJECT

