

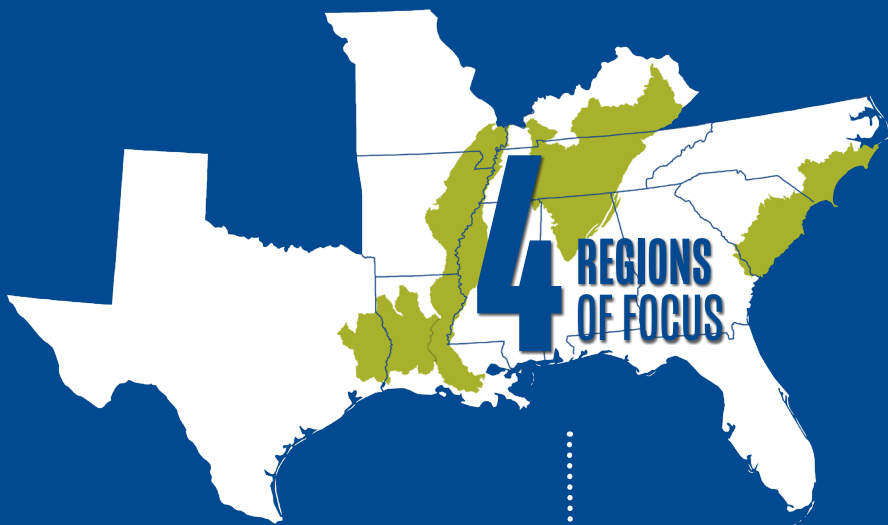
Forestland Stewards



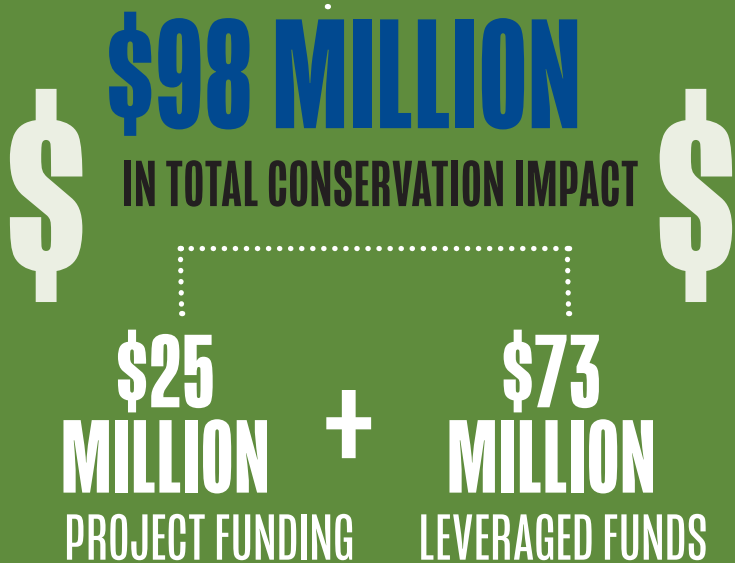
NFWF

INTERNATIONAL PAPER

Launched in 2013, the Forestland Stewards Partnership between International Paper and the National Fish and Wildlife Foundation protects and enhances ecologically important forestlands and coastal savannas in ten southern states.



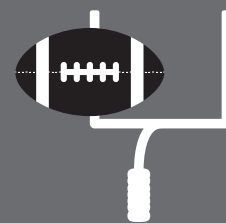
HABITAT AND WILDLIFE CONSERVATION



600,000+ ACRES

NATIVE FOREST AND WILDLIFE HABITAT ESTABLISHED OR ENHANCED

= MORE THAN 450,000 FOOTBALL FIELDS



350,000 ACRES

LONGLEAF PINE ECOSYSTEM PLANTED OR ENHANCED



MORE THAN **500 MILES** STREAM HABITAT IMPROVED

18,000

PRIVATE LANDOWNERS ENGAGED

